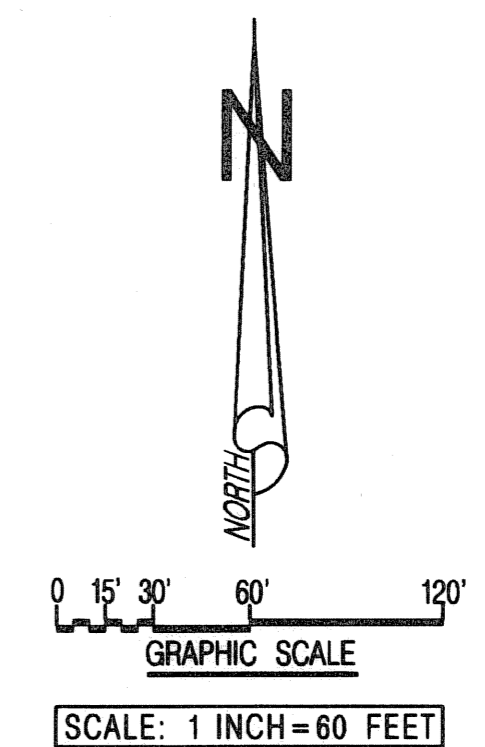


# BEAR'S CLUB REPLAT, A P.U.D.

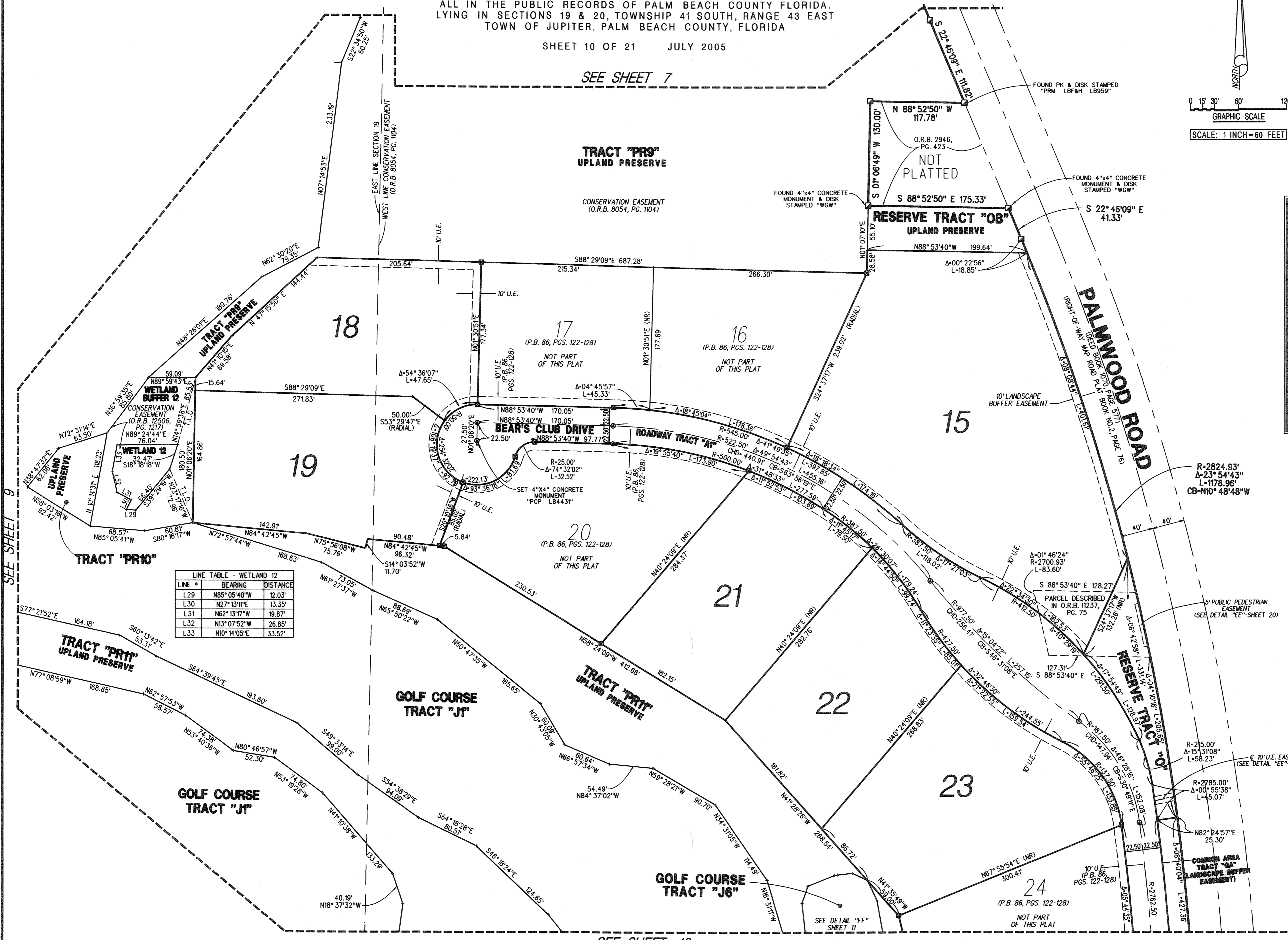
BEING A REPLAT OF A PORTION OF BEAR'S CLUB, A P.U.D.,  
AS RECORDED IN PLAT BOOK 86, PAGES 122 THROUGH 128,  
AND A PARCEL OF LAND DESCRIBED IN OFFICIAL RECORD BOOK 11237 PAGE 75,  
ALL IN THE PUBLIC RECORDS OF PALM BEACH COUNTY FLORIDA,  
LYING IN SECTIONS 19 & 20, TOWNSHIP 41 SOUTH, RANGE 43 EAST  
TOWN OF JUPITER, PALM BEACH COUNTY, FLORIDA

SHEET 10 OF 21 JULY 2005

SEE SHEET 7

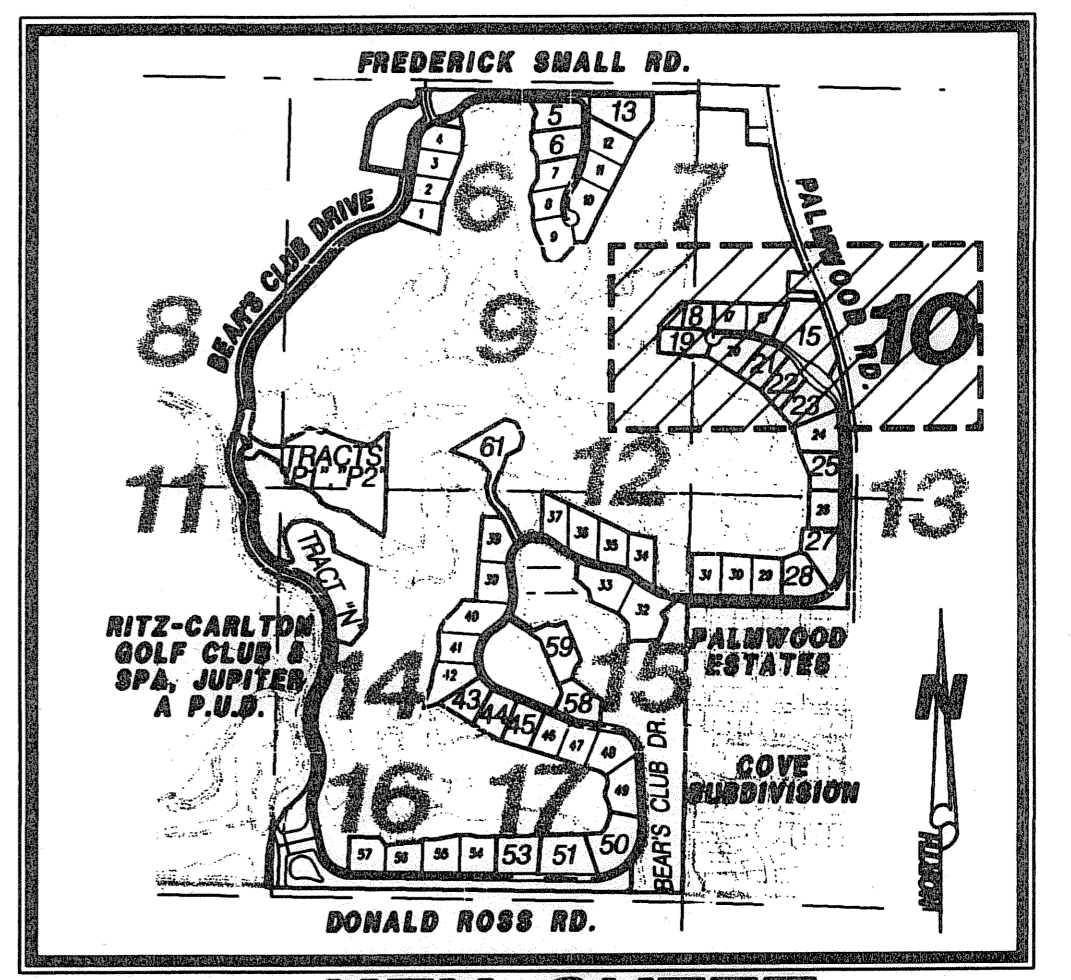


42



LINE TABLE - WETLAND 12

LINE #	BEARING	DISTANCE
L29	N85°05'40"W	12.03'
L30	N27°13'11"E	13.35'
L31	N62°13'17"W	19.87'
L32	N13°07'52"W	26.85'
L33	N10°14'05"E	33.52'



SEE SHEET 9

SEE SHEET 13

**LIDBERG LAND SURVEYING, INC.**  
675 West Indiantown Road, Suite 200,  
Jupiter, Florida 33458 TEL. 561-746-8454

CAD.	K:\UST\194143\BEARCLUB\2090306\SHEET9.DGN				
REF.	K:\UST\194143\BEARCLUB\2090306\2090306.DGN				
FLD.	B.D.	FB.	PG.	JOB	00-209-306
OFF.	R.W. & E.C.	DATE	JUNE 2005		
CKD.	D.C.L.	SHEET	10	OF	21
		DWG.	D00-209P		