

BEAR'S CLUB REPLAT, A P.U.D.

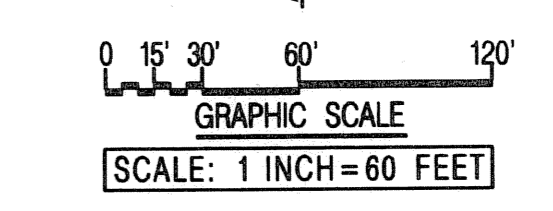
BEING A REPLAT OF A PORTION OF BEAR'S CLUB, A P.U.D., AS RECORDED IN PLAT BOOK 86, PAGES 122 THROUGH 128,
AND A PARCEL OF LAND DESCRIBED IN OFFICIAL RECORD BOOK 11237 PAGE 75,
ALL IN THE PUBLIC RECORDS OF PALM BEACH COUNTY FLORIDA,
LYING IN SECTIONS 19 & 20, TOWNSHIP 41 SOUTH, RANGE 43 EAST
TOWN OF JUPITER, PALM BEACH COUNTY, FLORIDA

SHEET 11 OF 21 JULY 2005

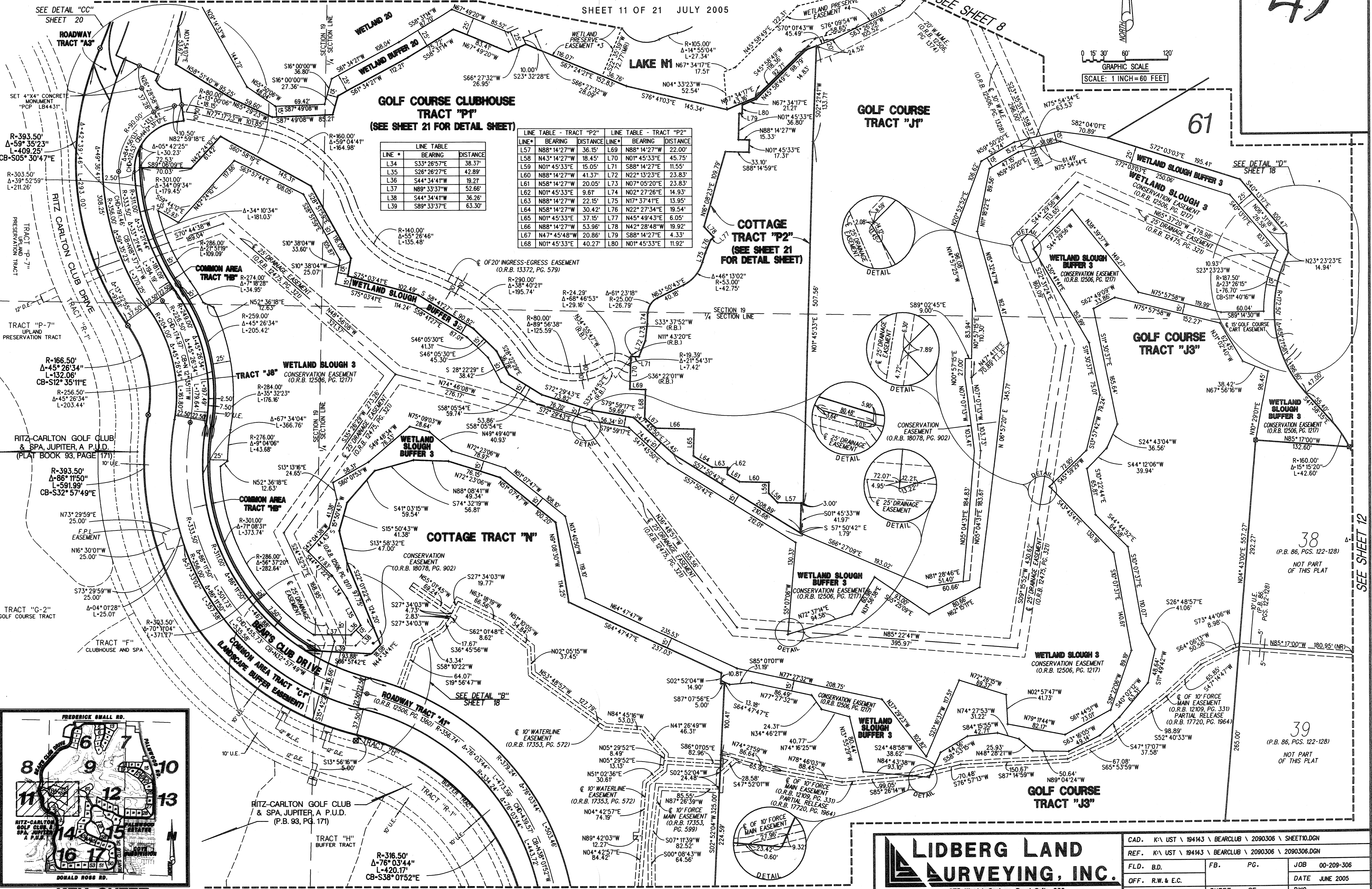
43

SEE SHEET 8

SEE SHEET 8



61



GOLF COURSE CLUBHOUSE TRACT "PT"
(SEE SHEET 21 FOR DETAIL SHEET)

COTTAGE TRACT "P2"
(SEE SHEET 21 FOR DETAIL SHEET)

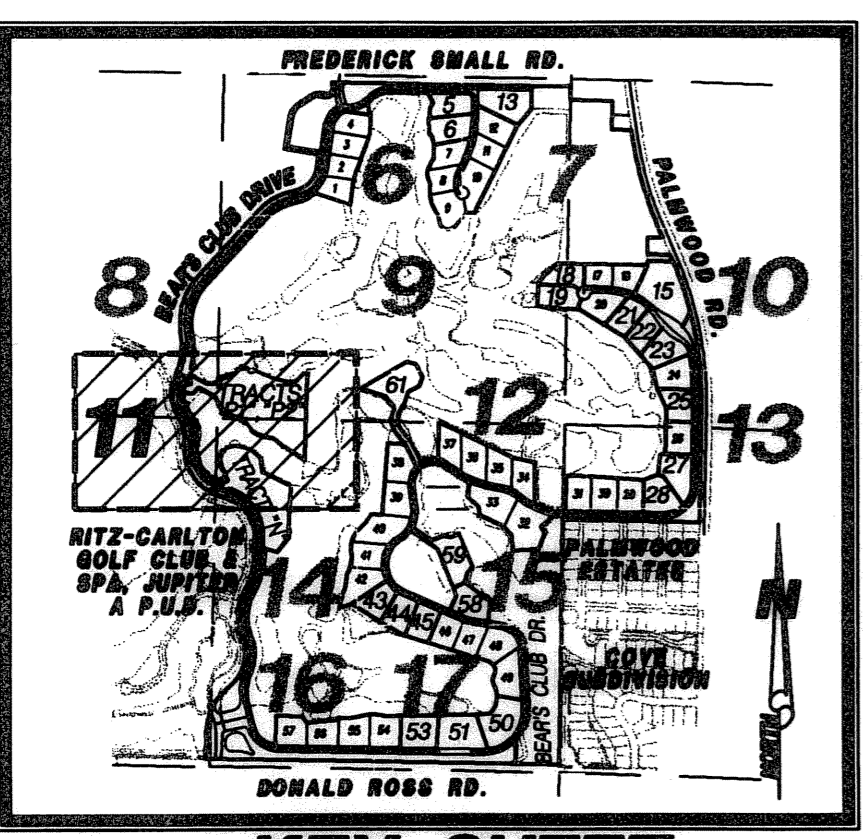
LINE TABLE - TRACT "P2"			LINE TABLE - TRACT "P2"		
LINE #	BEARING	DISTANCE	LINE #	BEARING	DISTANCE
L34	S33°26'57"E	38.37'	L69	N88°14'27"W	22.00'
L35	S26°26'27"E	42.89'	L70	N01°45'33"E	45.75'
L36	S44°34'41"W	19.21'	L71	S88°14'27"E	11.55'
L37	N89°33'37"W	52.66'	L72	N22°13'23"E	23.83'
L38	S44°34'41"W	36.26'	L73	N07°05'20"E	23.83'
L39	S89°33'37"E	63.30'	L74	N02°27'26"E	14.93'
			L75	N17°37'41"E	13.95'
			L76	N22°27'34"E	19.54'
			L77	N45°49'43"E	6.05'
			L78	N42°28'48"W	19.92'
			L79	S88°14'27"E	4.33'
			L80	N01°45'33"E	11.92'

SEE DETAIL "CC" SHEET 20

SEE DETAIL "D" SHEET 18

RITZ-CARLTON GOLF CLUB & SPA, JUPITER, A P.U.D. (PLAT BOOK 93, PAGE 171)

RITZ-CARLTON GOLF CLUB & SPA, JUPITER, A P.U.D. (P.B. 93, PG. 171)



KEY SHEET

SEE SHEET 14

38
(P.B. 86, PGS. 122-128)
NOT PART OF THIS PLAT

39
(P.B. 86, PGS. 122-128)
NOT PART OF THIS PLAT

LIDBERG LAND SURVEYING, INC.
675 West Indiantown Road, Suite 200, Jupiter, Florida 33458 TEL. 561-746-8454

CAD.	K:\UST\184143\BEARCLUB\2090306\ SHEET10.DGN		
REF.	K:\UST\184143\BEARCLUB\2090306\2090306.DGN		
FLD. B.D.	FB. PG.	JOB	00-209-306
OFF. R.W. & E.C.		DATE	JUNE 2005
CKD. D.C.L.	SHEET 11 OF 21	DWG.	DOO-209P