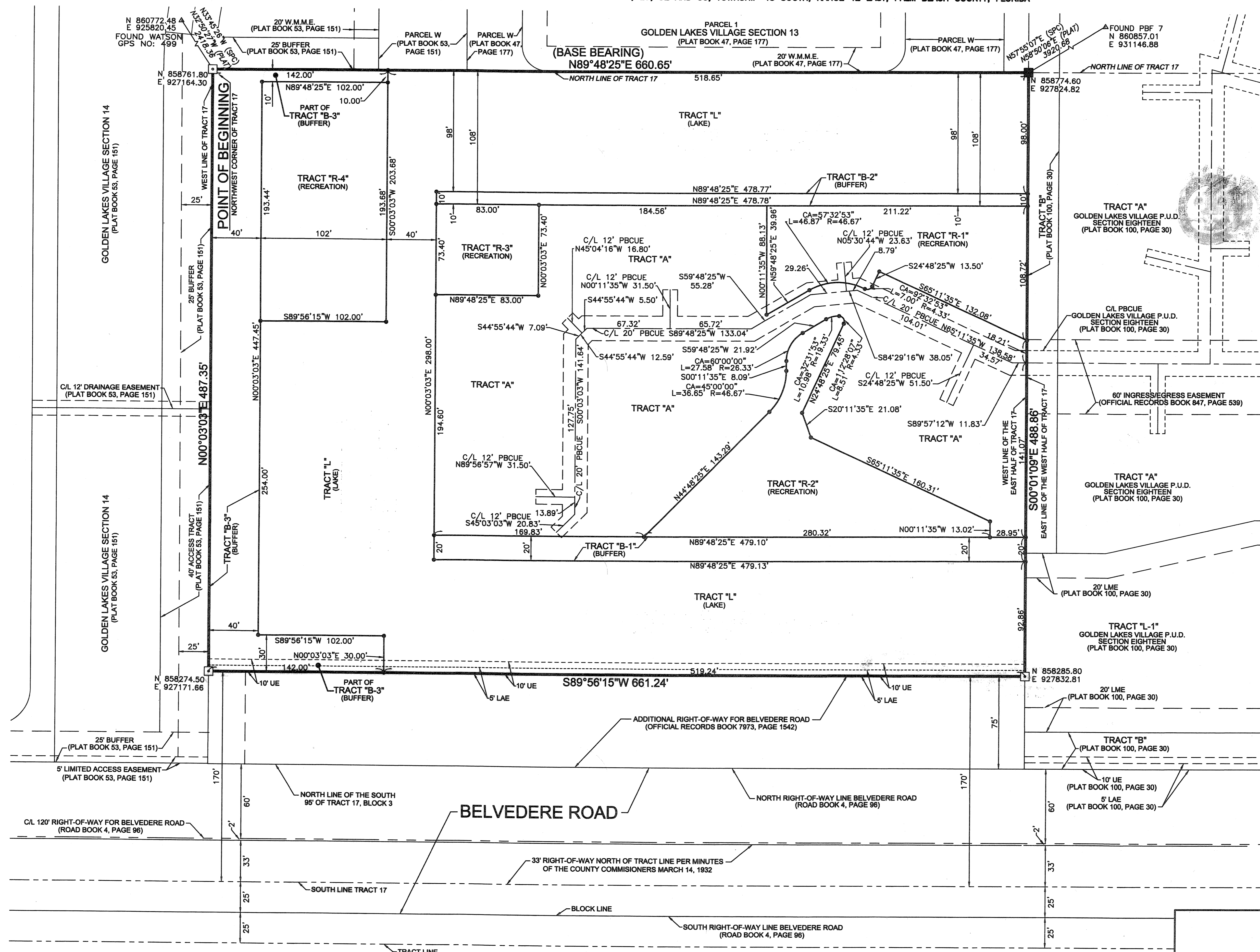


BEING A REPLAT OF PORTIONS OF TRACT 12, TRACT 17, AND A 30' RIGHT-OF-WAY, BLOCK 3, PALM BEACH FARMS CO. PLAT NO. 3, RECORDED IN PLAT BOOK 2 PAGE 45, PUBLIC RECORDS, PALM BEACH COUNTY, FLORIDA AND LYING IN SECTIONS 28, 29, 32 AND 33, TOWNSHIP 43 SOUTH, RANGE 42 EAST, PALM BEACH COUNTY, FLORIDA



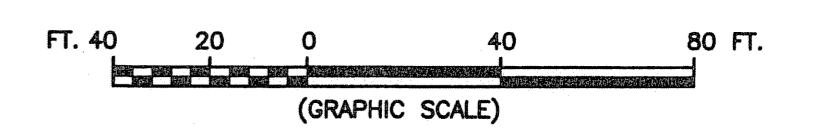
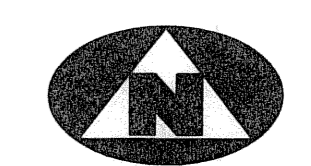
SURVEYOR'S NOTES

- 1. THE BASE BEARING, AS SHOWN HEREON, IS N89°48'25"E ALONG THE NORTH LINE OF THE WEST HALF OF TRACT 17. BLOCK 3, PALM BEACH FARMS COMPANY PLAT NO. 3...

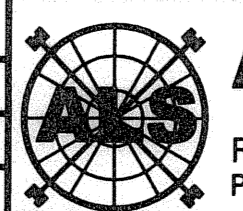
L.W.D.D. L-3 CANAL RIGHT-OF-WAY

LEGEND

Table with 4 columns: Symbol, Description, Symbol, Description. Includes symbols for C/L, PBCUE, PG, LAE, L.W.D.D., R, L, CA, LCB, CHD, ORB, LME, and SPC.



BELVEDERE ISLES II P.U.D.



ASSOCIATED LAND SURVEYORS, INC. 4152 W. BLUE HERON BOULEVARD-SUITE 121 RIVIERA BEACH FLORIDA 33404 L.B. NO. 7344

Subdivision Belvedere Isles II, Book 106, Page 55, Flood Map # 150 A, Zoning RS, Quad # 40, TAZ # 816, PUD Name.

Table with 2 columns: Field Name, Value. Includes FILE: P262PLAT_W, FB: (blank), WO.NO.: P262, SCALE: 1"=40', DATE: 11/5/2004, DWN: KVC, SHEET 2 OF 2.