

64

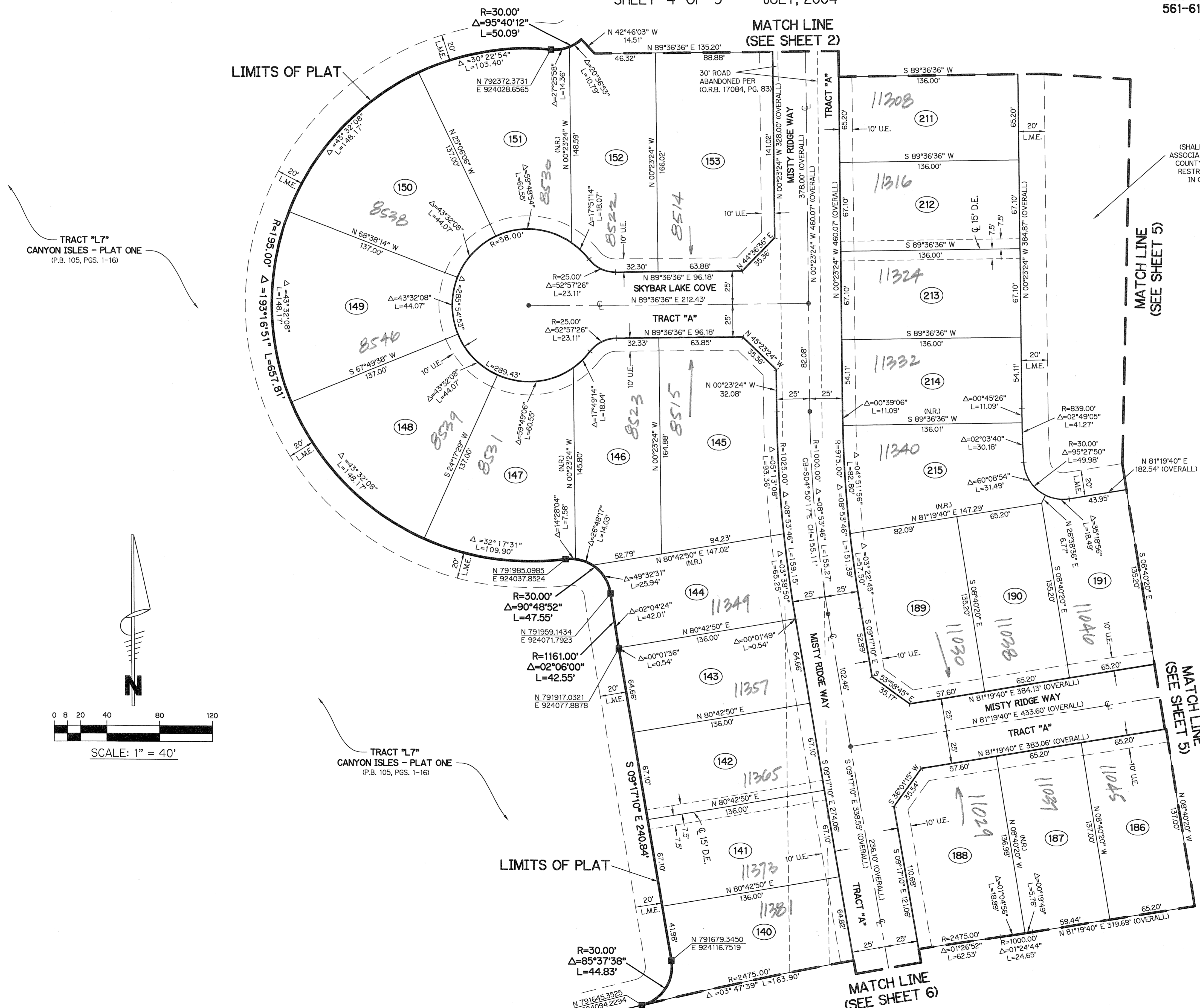
CANYON ISLES (A.K.A. FOGG CENTRAL) PLANNED UNIT DEVELOPMENT

CANYON ISLES - PLAT THREE

A PARCEL OF LAND IN SECTION 32, TOWNSHIP 45 SOUTH, RANGE 42 EAST, PALM BEACH COUNTY, FLORIDA, BEING A PORTION OF TRACTS 6-10, 23-27, 38-41, AND 56-59, BLOCK 59, PALM BEACH FARMS Co. PLAT No.3, RECORDED IN PLAT BOOK 2, PAGE 45, OF THE PUBLIC RECORDS OF PALM BEACH COUNTY, FLORIDA

SHEET 4 OF 9 JULY, 2004

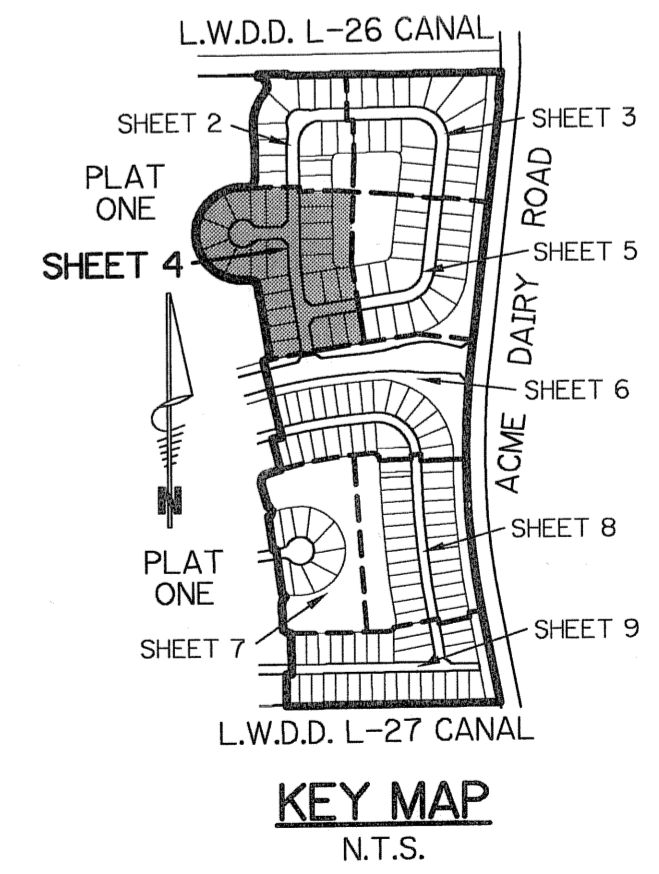
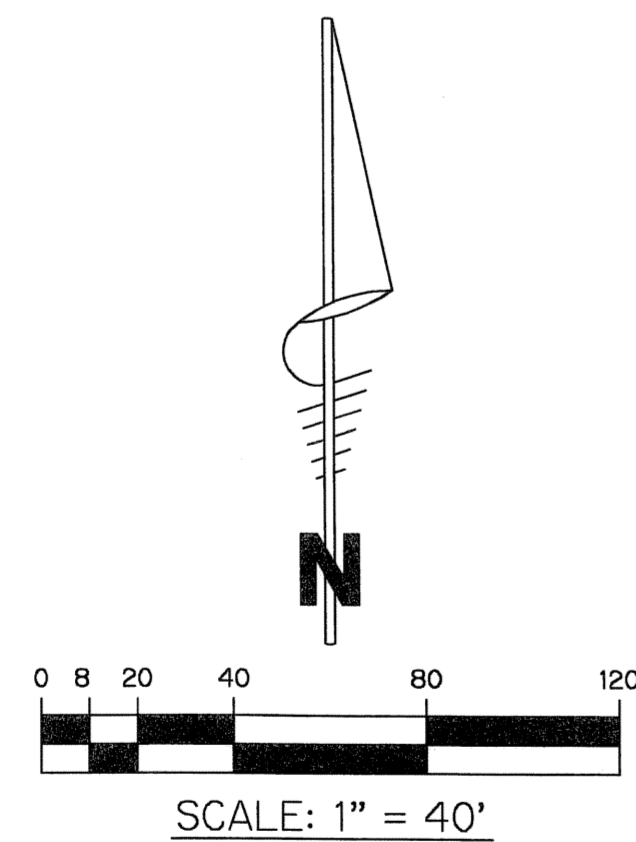
B BROWN & PHILLIPS, INC.
CERTIFICATE OF AUTHORIZATION # LB 6473
901 NORTHPOINT PARKWAY, SUITE 305
WEST PALM BEACH, FLORIDA 33407
561-615-3988, 561-615-3986 FAX



TRACT "L7"
CANYON ISLES - PLAT ONE
(P.B. 105, PGS. 1-16)

TRACT "L8"
WATER MANAGEMENT TRACT
(SHALL BE MAINTAINED BY CANYON ISLES MASTER ASSOCIATION, INC. WITHOUT RECOURSE TO PALM BEACH COUNTY, AND SUBJECT TO EXISTING LITTORAL ZONE RESTRICTIVE COVENANT AGREEMENT AS RECORDED IN O.R.B. 17690, PG. 1030, PUBLIC RECORDS OF PALM BEACH COUNTY, FLORIDA)
2.853 ACRES

- LEGEND:**
- - SET PERMANENT REFERENCE MONUMENT, L.B. #6473
 - - FOUND PERMANENT REFERENCE MONUMENT, L.B. #6473
 - - SET PERMANENT CONTROL POINT, L.B. #6473
 - - FOUND PERMANENT CONTROL POINT, L.B. #6473
 - Δ - DELTA ANGLE
 - B.E. - BUFFER EASEMENT
 - CB - CHORD BEARING
 - CD - CHORD DISTANCE
 - C - CENTERLINE
 - D.B. - DEED BOOK
 - D.E. - DRAINAGE EASEMENT
 - L - ARC LENGTH
 - L.A.E. - LIMITED ACCESS EASEMENT
 - L.M.A.E. - LAKE MAINTENANCE ACCESS EASEMENT
 - L.M.E. - LAKE MAINTENANCE EASEMENT
 - L.W.D.D. - LAKE WORTH DRAINAGE DISTRICT
 - NR - NOT RADIAL
 - N.T.S. - NOT TO SCALE
 - O.R.B. - OFFICIAL RECORD BOOK
 - O.E. - OVERHANG EASEMENT
 - P.B. - PLAT BOOK
 - P.C.P. - PERMANENT CONTROL POINT
 - PGS. - PAGES
 - P.O.B. - POINT OF BEGINNING
 - P.O.C. - POINT OF COMMENCEMENT
 - P.S.M. - PROFESSIONAL SURVEYOR AND MAPPER
 - R - RADIUS
 - R/W - RIGHT-OF-WAY
 - U.E. - UTILITY EASEMENT



SUBDIVISION Canyon Isles - Part 3
BOOK 106 PAGE 64
FLOOD ZONE FLOOD MAP # 200 A
QUAD # 50 ZONING PDD
SE ZIP CODE 33437
TAZ 750
PUD NAME FOGG CENTRAL