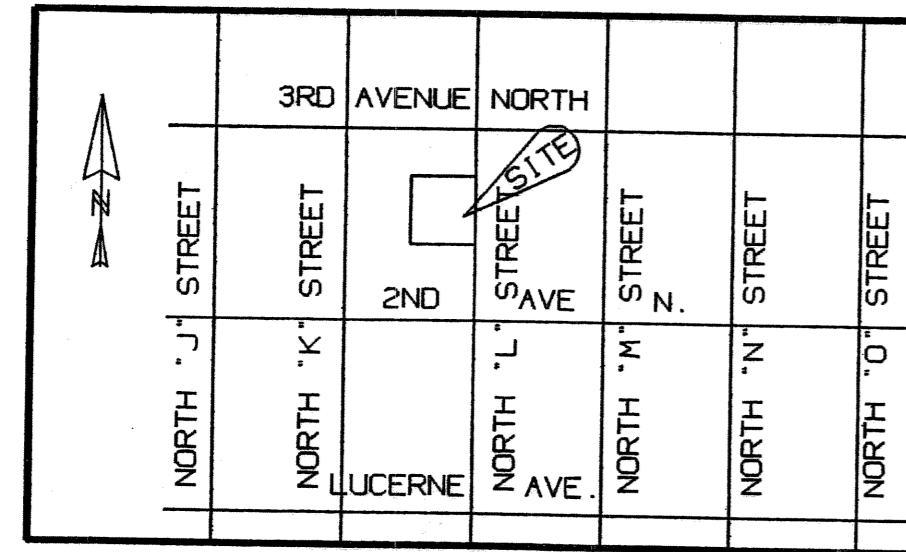
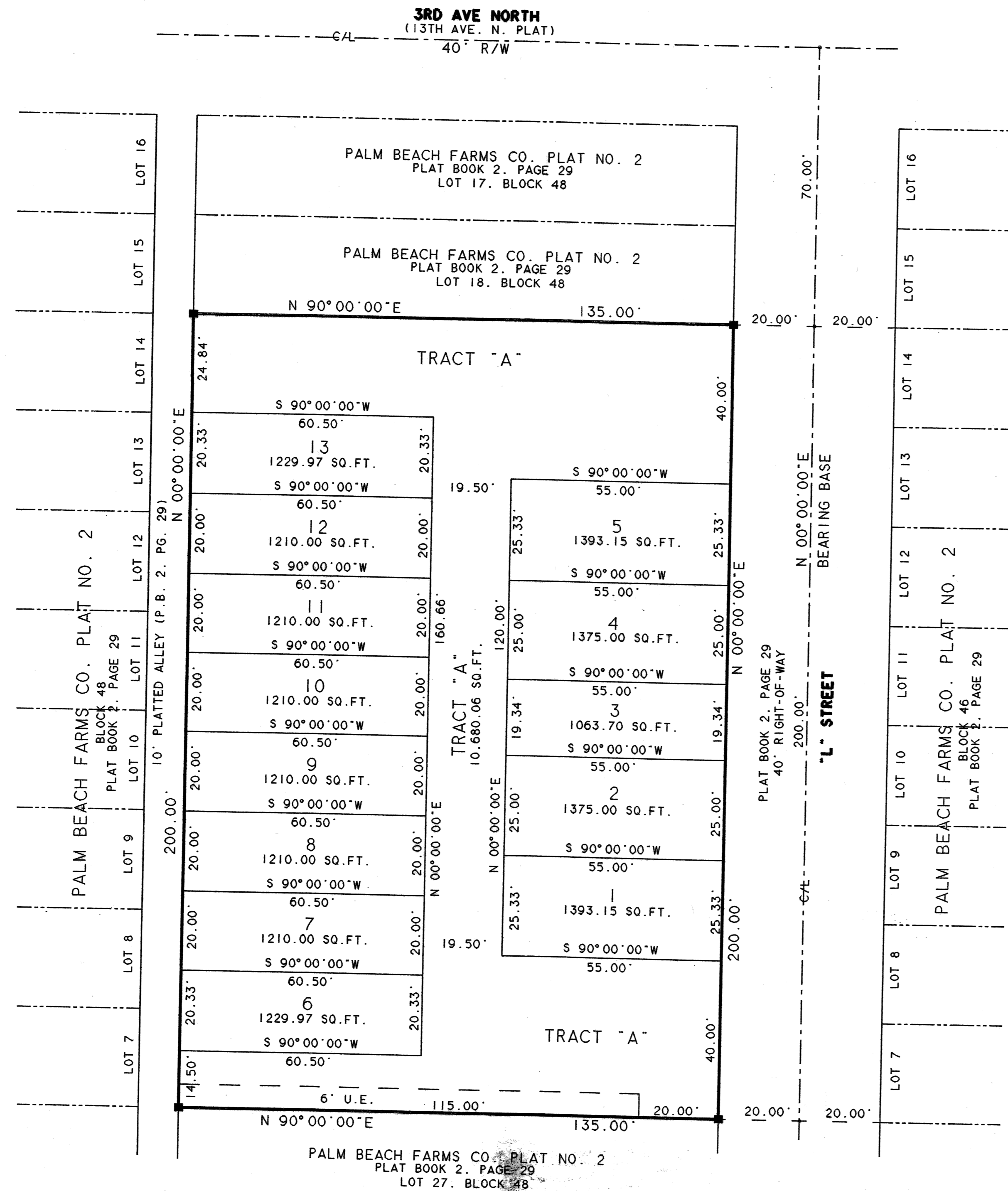
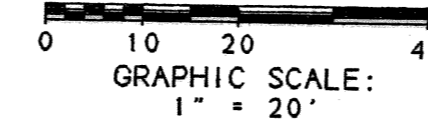
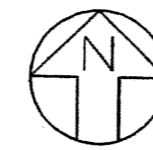


COCONUT WALK OF LAKE WORTH

BEING A REPLAT OF LOTS 19 TROUGH 26, BLOCK 48, PALM BEACH FARMS COMPANY PLAT NO. 2 (TOWNSITE OF LUCERNE), AS RECORDED IN PLAT BOOK 2, PAGES 29 - 40, PALM BEACH COUNTY RECORDS LYING IN SECTION 22 TOWNSHIP 44 SOUTH, RANGE 43 EAST, CITY OF LAKE WORTH PALM BEACH COUNTY, FLORIDA. SHEET 2 OF 2 JUNE 2005



LOCATION MAP
N.T.S.



THIS INSTRUMENT WAS PREPARED BY JOHN F. TRACH IN THE OFFICES OF: UNIVERSAL SURVEYING SYSTEMS, INC., 2623 LAKE DRIVE NORTH BOYNTON BEACH, FLORIDA 33435

- LEGEND:
- P.B. - PLATBOOK
 - P.G. - PAGE
 - P.R.M. - PERMANENT REFERENCE MONUMENT
 - R/W - RIGHT-OF-WAY
 - C/L - CENTERLINE
 - - DENOTES SET P.R.M. #LS 4871 UNLESS OTHERWISE NOTED
 - U.E. - UTILITY EASEMENT