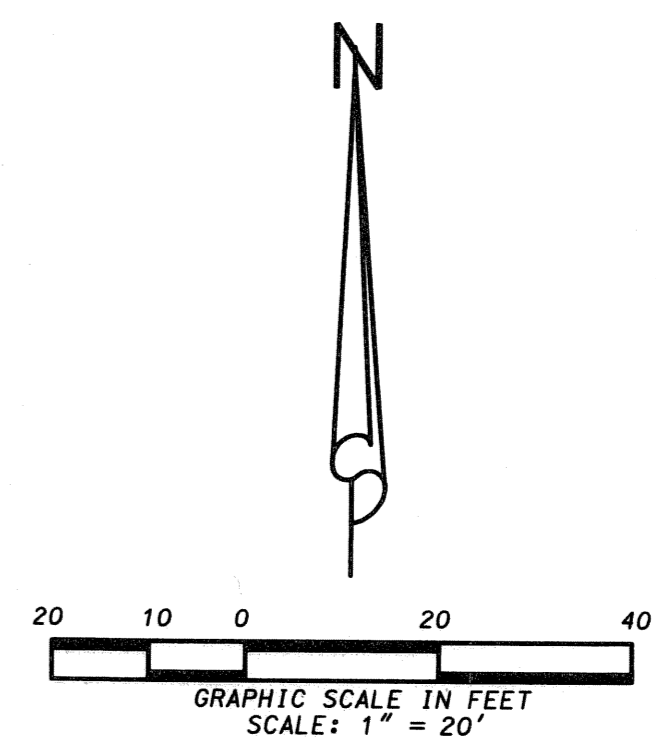
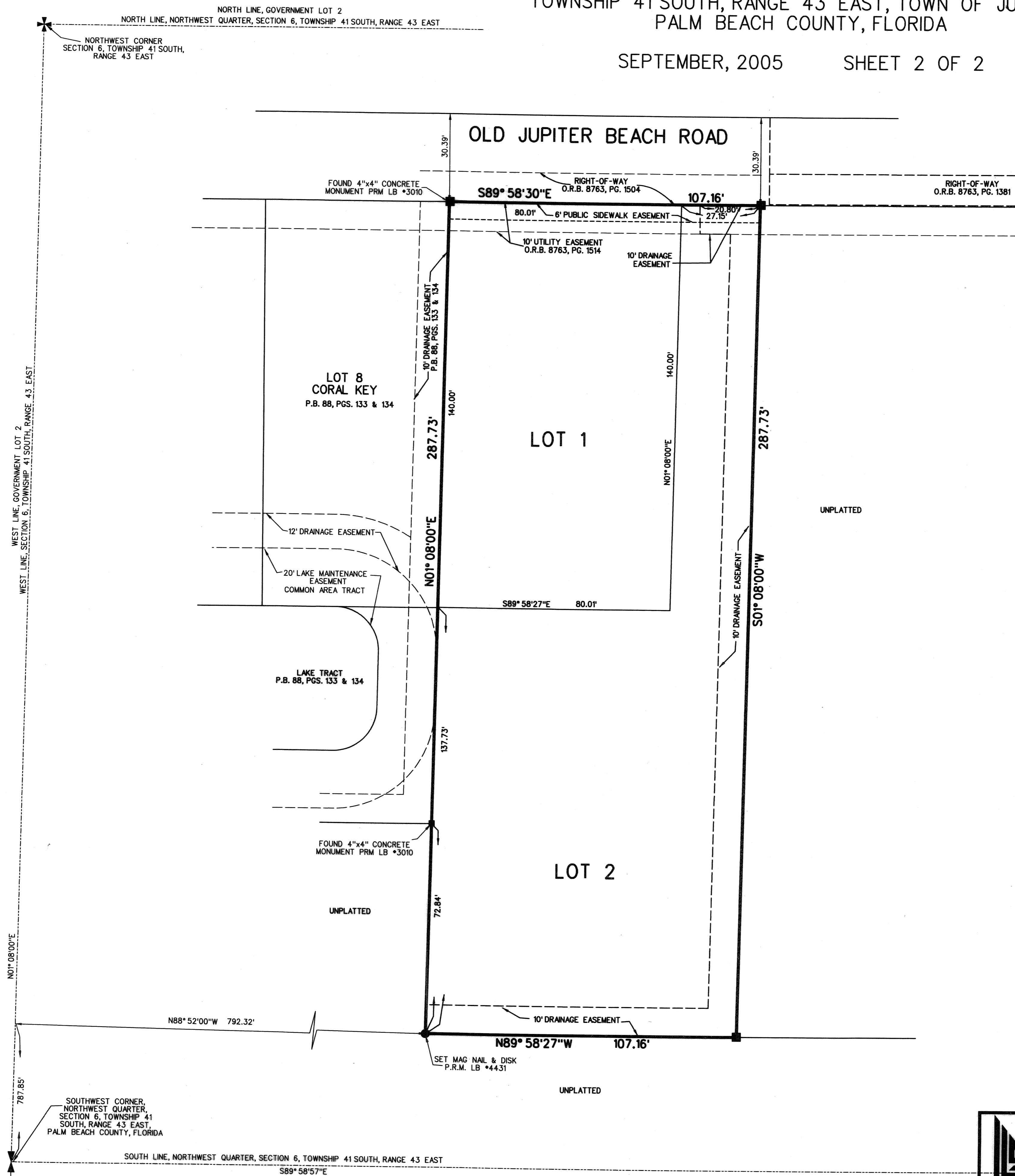


HUTCHISON PLAT

LYING IN A PORTION OF GOVERNMENT LOT 2, SECTION 6,
TOWNSHIP 41 SOUTH, RANGE 43 EAST, TOWN OF JUPITER,
PALM BEACH COUNTY, FLORIDA

SEPTEMBER, 2005 SHEET 2 OF 2



		CAD. K:\UST \ 064143 \ 05-078306 \ 05-078306.DGN	
		REF.	
FLD. -	FB. PG.	JOB	05-078-306
OFF. L.J.C.	-	DATE	07/01/05
CKD. D.C.L.	SHEET 2 OF 2	DWG.	D05-078P

LB4431
 875 West Indiantown Road, Suite 200,
 Jupiter, Florida 33458 TEL. 561-746-8454