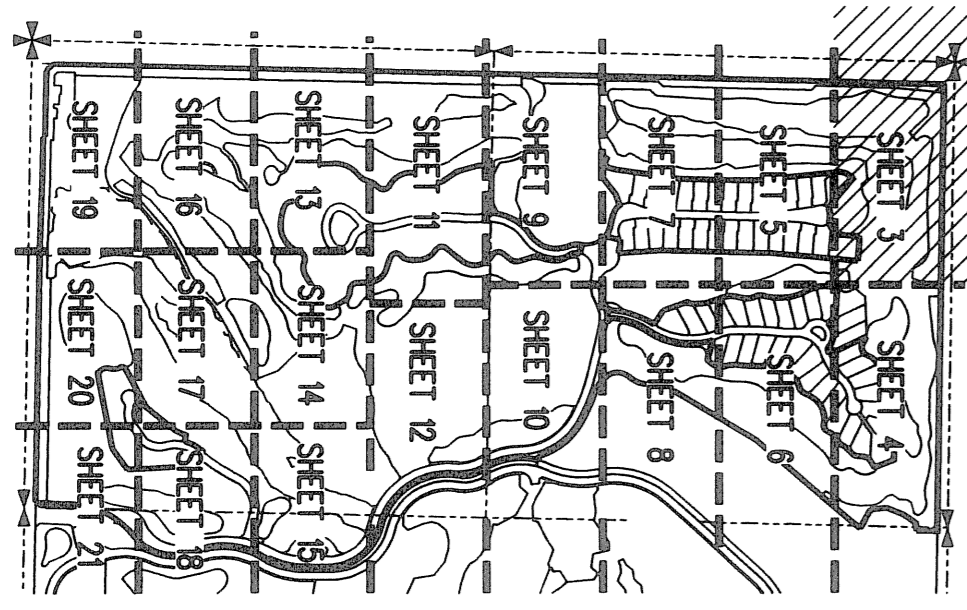
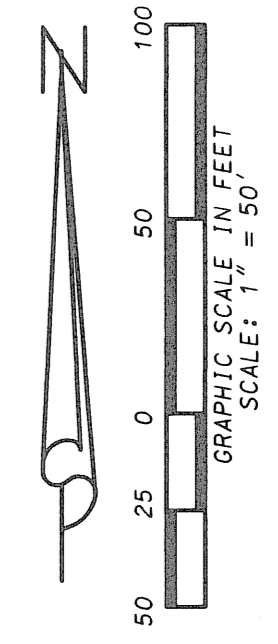


RITZ-CARLTON GOLF CLUB & SPA REPLAT, JUPITER, A P.U.D.

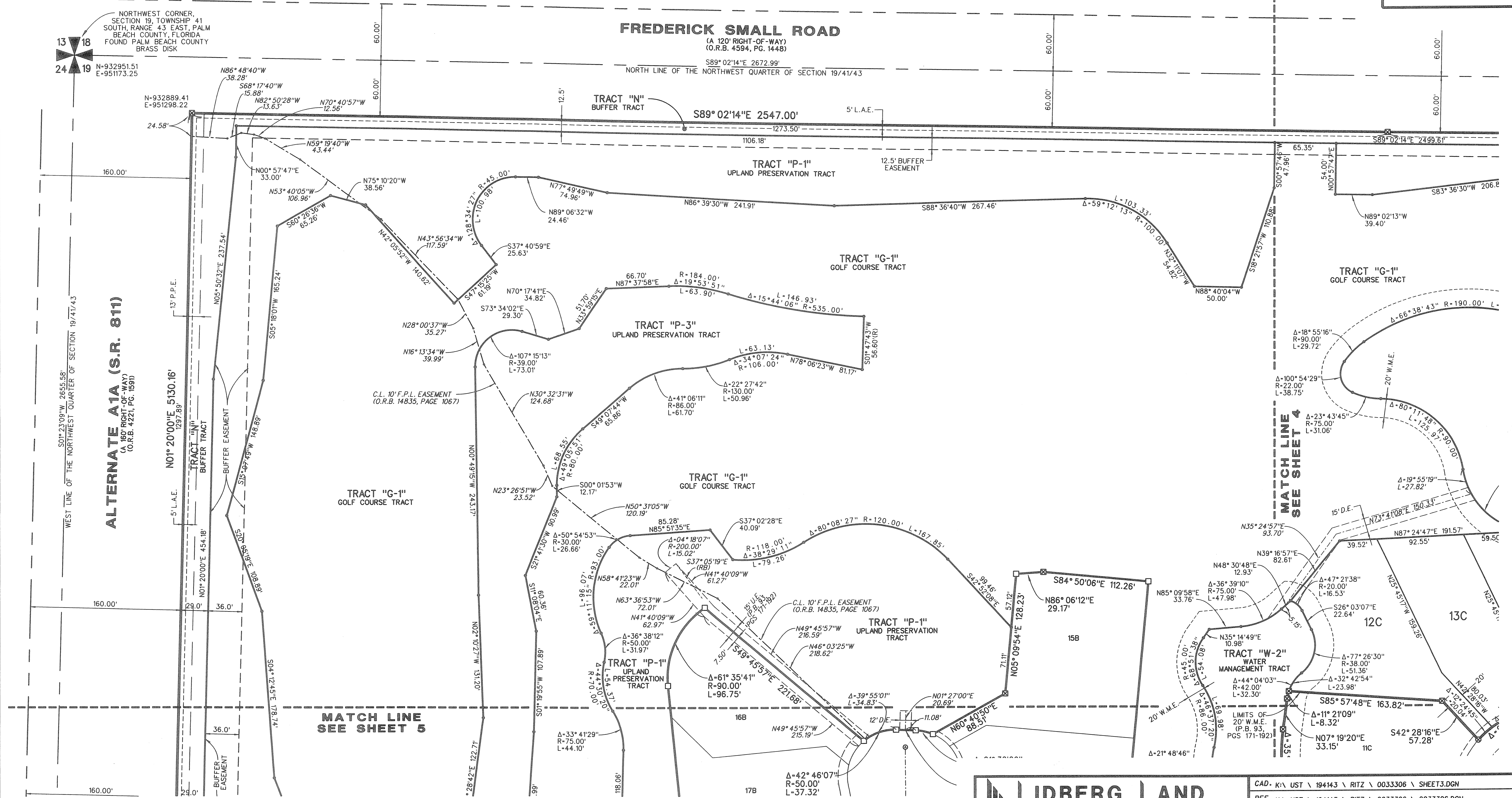
BEING A REPLAT OF RITZ-CARLTON GOLF CLUB & SPA, JUPITER, A P.U.D.,
 AS RECORDED IN PLAT BOOK 93, PAGES 171 THROUGH 192,
 LESS AND EXCEPT TRACTS "A", "A1", "C", "E", "M", "R-3", "R-4" AND R-6;
 LOTS 1C THROUGH 11C, INCLUSIVE; LOTS 15C THROUGH 34C, INCLUSIVE,
 OF SAID RITZ-CARLTON GOLF CLUB & SPA, JUPITER, A P.U.D.,
 AND LESS AND EXCEPT ALL OF RITZ-CARLTON GOLF CLUB & SPA, POD B, JUPITER, A P.U.D.,
 AS RECORDED IN PLAT BOOK 99, PAGES 42 THROUGH 44,
 ALL IN THE PUBLIC RECORDS OF PALM BEACH COUNTY FLORIDA,
 LYING IN SECTION 19, TOWNSHIP 41 SOUTH, RANGE 43 EAST,
 TOWN OF JUPITER, PALM BEACH COUNTY, FLORIDA
 JULY, 2005 SHEET 3 OF 23



KEY MAP (NOT TO SCALE)



99



LIDBERG LAND SURVEYING, INC.
 LB4431 675 West Indiantown Road, Suite 200, Jupiter, Florida 33458 TEL. 561-746-8454

CAD: K:\UST\194143\RITZ\0033306\SHEET3.DGN		
REF: K:\UST\194143\RITZ\0033306\0033306.DGN		
FLD.	FB.	PG.
OFF. R.J.W.		JOB 03-003-306
CKD. D.C.L.	SHEET 3 OF 23	DATE 09/18/03
		DWG. D03-003P