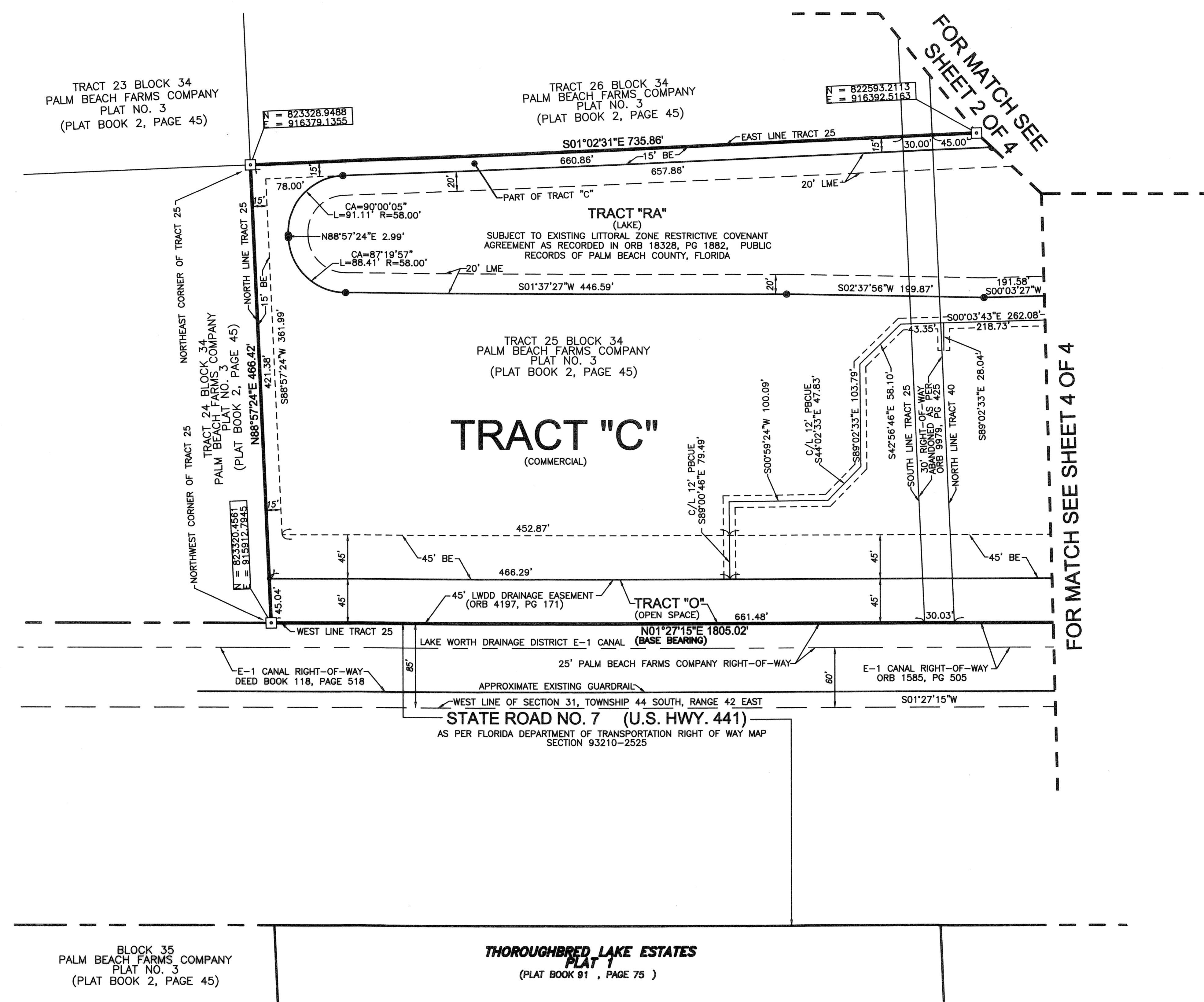


MISSION LAKES M.U.P.D.

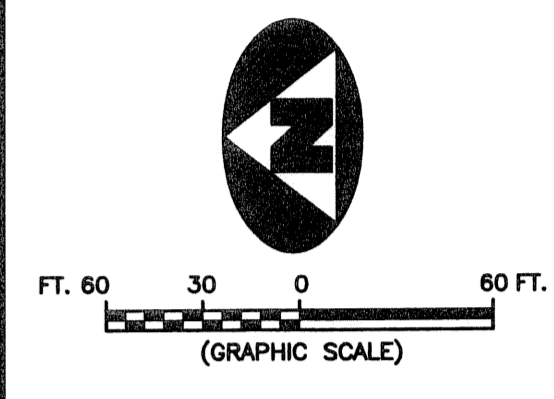
131

BEING A REPLAT OF TRACTS 25 AND 40, TOGETHER WITH THE 30 FOOT RIGHT OF WAY LYING BETWEEN SAID TRACTS, AND TOGETHER WITH A PORTION OF TRACTS 39, 41 AND 42, ALL LYING IN BLOCK 34, PALM BEACH FARMS COMPANY PLAT NO. 3, RECORDED IN PLAT BOOK 2, PAGE 45, PUBLIC RECORDS, PALM BEACH COUNTY, FLORIDA AND LYING IN THE SOUTHWEST ONE-QUARTER OF SECTION 31, TOWNSHIP 44 SOUTH, RANGE 42 EAST, PALM BEACH COUNTY, FLORIDA



FOR MATCH SEE SHEET 2 OF 4

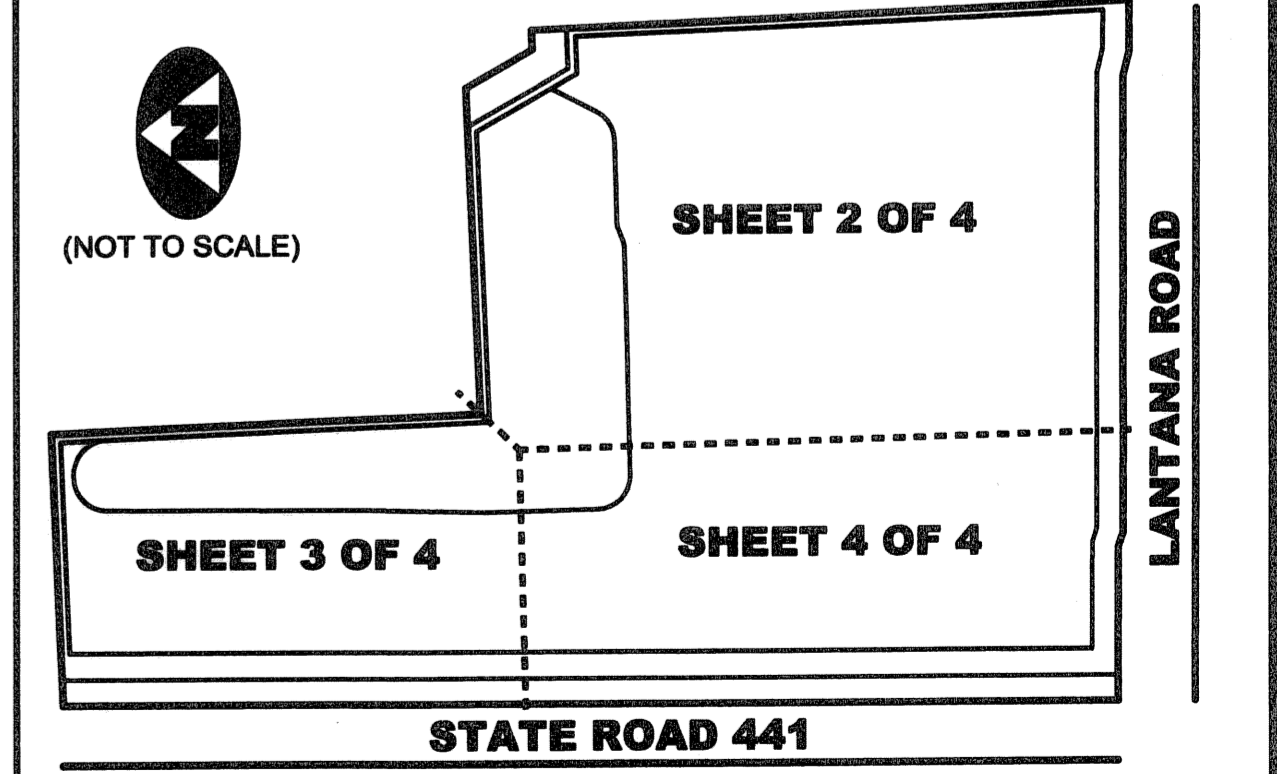
FOR MATCH SEE SHEET 4 OF 4



NOTE

TRACT "C", TRACT "RA" AND TRACT "O" ARE THE MAINTENANCE OBLIGATION OF MISSION LAKES LLC, A FLORIDA LIMITED LIABILITY COMPANY AND TARGET CORPORATION, A MINNESOTA CORPORATION, THEIR SUCCESSORS AND/OR ASSIGNS.

SHEET INDEX



SURVEYOR'S NOTES

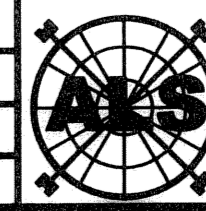
1. THE BASE BEARING, AS SHOWN HEREON, IS N01°27'15"E ALONG THE WEST LINE OF TRACT "O"
2. IN THOSE INSTANCES WHERE UTILITY OR DRAINAGE STRUCTURES ARE CONSTRUCTED IN CONFLICT WITH THE PLATTED PERMANENT CONTROL POINT POSITION STRADDLERS MONUMENTED AS PERMANENT CONTROL POINTS WILL BE SET TO REFERENCE THE PLATTED POSITION.
3. LINES THAT INTERSECT CURVES ARE NOT RADIAL UNLESS OTHERWISE NOTED.
4. THIS INSTRUMENT WAS PREPARED BY WM. R. VAN CAMPEN, P.S.M. NO. 2424, IN AND FOR THE OFFICES OF ASSOCIATED LAND SURVEYOR'S, INC., 4152 WEST BLUE HERON BOULEVARD, SUITE 121, RIVIERA BEACH, FLORIDA, 33407
5. THE COORDINATES SHOWN HEREON ARE STATE PLANE GRID COORDINATES ACCORDING TO THE TRANSVERSE MERCATOR PROJECTION OF THE FLORIDA EAST ZONE, N.A.D. 1983, PER THE 1990 ADJUSTMENT.
6. THE GROUND DISTANCE TO GRID DISTANCE SCALE FACTOR IS 1.000019 (GROUND DISTANCE X SCALE FACTOR = GRID DISTANCE)
7. THE LINEAR DIMENSIONS SHOWN HEREON ARE GROUND DISTANCES IN U.S. FEET AND DECIMAL PARTS THEREOF.
8. THE BEARINGS SHOWN HEREON ARE BASED ON STATE PLANE GRID AZIMUTHS

LEGEND

| | | | | | |
|-------|--|-----|-------------------------------|---------------|--|
| (R) | DENOTES A RADIAL LINE | R | DENOTES RADIUS DISTANCE | N = 123456789 | DENOTES A NORTHING AND EASTING COORDINATE |
| C/L | DENOTES A CENTERLINE | L | DENOTES ARC LENGTH DISTANCE | E = 123456789 | |
| DE | DENOTES DRAINAGE EASEMENT | CA | DENOTES CENTRAL ANGLE | ■ | DENOTES A FOUND PERMANENT REFERENCE MONUMENT |
| PBCUE | DENOTES A PALM BEACH COUNTY UTILITY EASEMENT | LCB | DENOTES LONG CHORD BEARING | □ | DENOTES A SET PERMANENT REFERENCE MONUMENT (L.B. 7344) |
| LS | DENOTES LIFT STATION EASEMENT | CHD | DENOTES CHORD DISTANCE | ⊠ | DENOTES A SET IRON ROD AND CAP (L.B. 7344) |
| PG | DENOTES PAGE | ORB | DENOTES OFFICIAL RECORDS BOOK | BE | DENOTES BUFFER EASEMENT |
| | | | | LAE | DENOTES LIMITED ACCESS EASEMENT |
| | | | | UE | DENOTES UTILITY EASEMENT |

FILE: P270PLAT

FB: WO.NO.: P270
 SCALE: 1"=60' DATE: 10/20/2004
 DWN: KVC SHEET 3 OF 4



ASSOCIATED LAND SURVEYORS, INC.
 4152 W. BLUE HERON BOULEVARD-SUITE 121
 RIVIERA BEACH FLORIDA 33404 L.B. NO. 7344
 PHONE: (561) 848-2102 FAX: (561) 844-9659 EMAIL: ALLSURVEY@AOL.COM

SUBDIVISION MISSION LAKES MUPD
 BOOK 106
 PAGE 121
 FLOODING # 200A
 ZONING MUPD
 QUAD # 4D
 SE
 TAZ 1024
 PUB NAME