

# JUPITER YACHT CLUB PLAT NO. 1

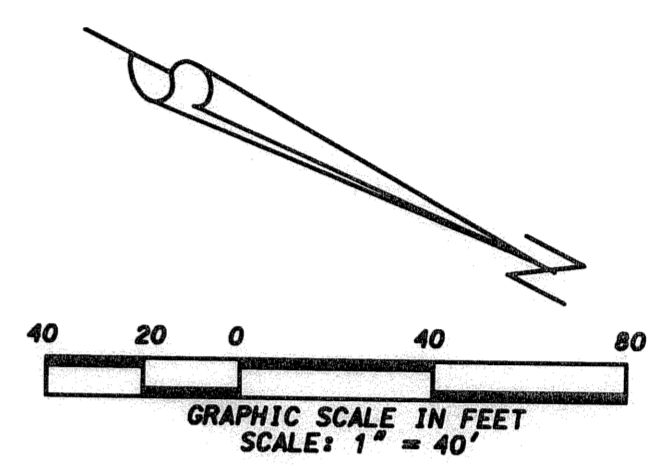
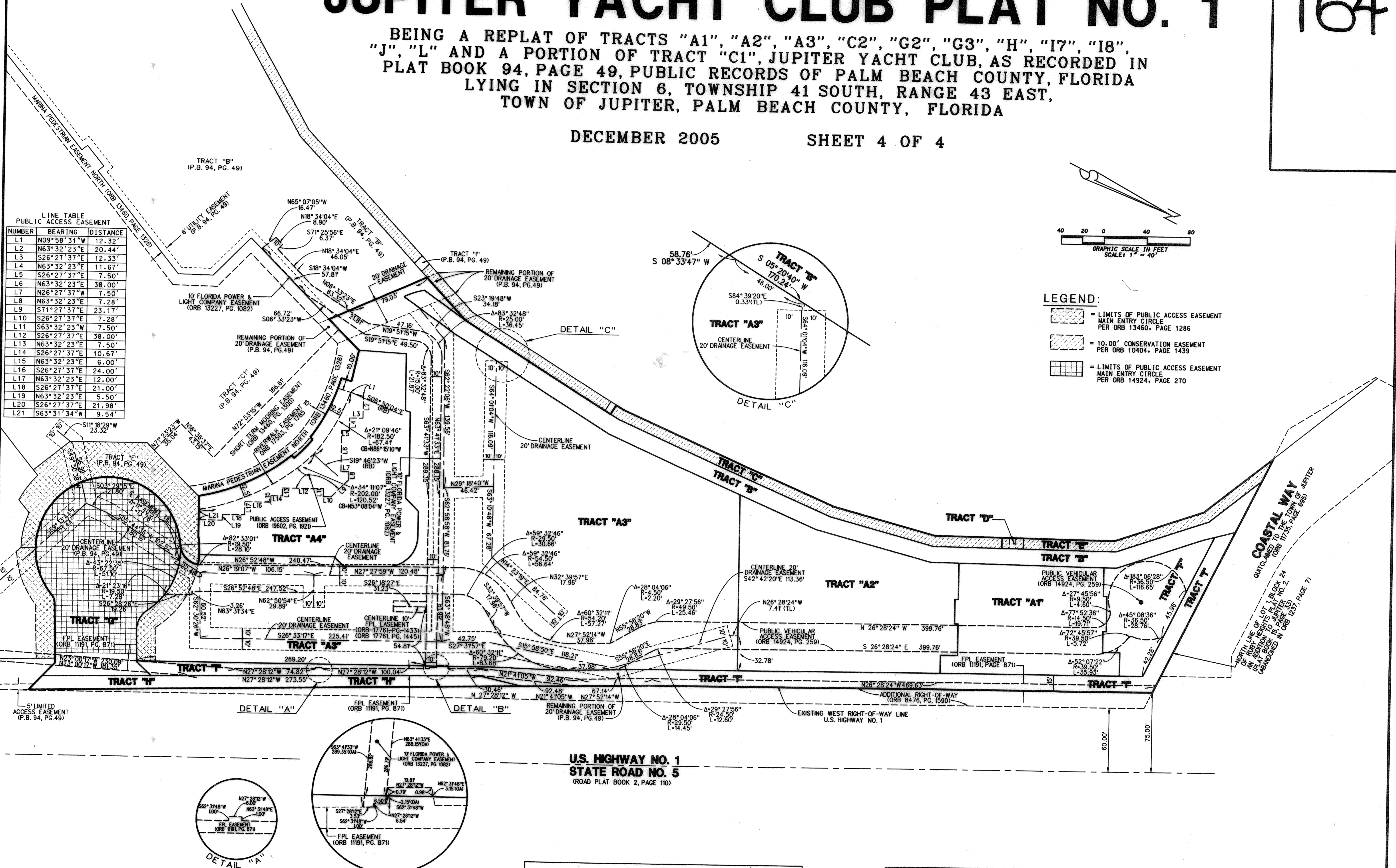
164

BEING A REPLAT OF TRACTS "A1", "A2", "A3", "C2", "G2", "G3", "H", "I7", "I8", "J", "L" AND A PORTION OF TRACT "C1", JUPITER YACHT CLUB, AS RECORDED IN PLAT BOOK 94, PAGE 49, PUBLIC RECORDS OF PALM BEACH COUNTY, FLORIDA LYING IN SECTION 6, TOWNSHIP 41 SOUTH, RANGE 43 EAST, TOWN OF JUPITER, PALM BEACH COUNTY, FLORIDA

DECEMBER 2005 SHEET 4 OF 4

LINE TABLE  
PUBLIC ACCESS EASEMENT

NUMBER	BEARING	DISTANCE
L1	N09°58'31"W	12.32'
L2	N63°32'23"E	20.44'
L3	S26°27'37"E	12.33'
L4	N63°32'23"E	11.67'
L5	S26°27'37"E	7.50'
L6	N63°32'23"E	38.00'
L7	N26°27'37"W	7.50'
L8	N63°32'23"E	7.28'
L9	S71°27'37"E	23.17'
L10	S26°27'37"E	7.28'
L11	S63°32'23"W	7.50'
L12	S26°27'37"E	38.00'
L13	N63°32'23"E	7.50'
L14	S26°27'37"E	10.67'
L15	N63°32'23"E	6.00'
L16	S26°27'37"E	24.00'
L17	N63°32'23"E	12.00'
L18	S26°27'37"E	21.00'
L19	N63°32'23"E	5.50'
L20	S26°27'37"E	21.98'
L21	S63°31'34"W	9.54'



- LEGEND:
- [Hatched pattern] = LIMITS OF PUBLIC ACCESS EASEMENT MAIN ENTRY CIRCLE PER ORB 13460, PAGE 1286
  - [Dotted pattern] = 10.00' CONSERVATION EASEMENT PER ORB 10404, PAGE 1439
  - [Grid pattern] = LIMITS OF PUBLIC ACCESS EASEMENT MAIN ENTRY CIRCLE PER ORB 14924, PAGE 270

EASEMENTS DETAIL SHEET 4  
SEE SHEET 2 FOR BOUNDARY DATA

**LIDBERG LAND SURVEYING, INC.**  
 675 West Indiantown Road, Suite 200,  
 Jupiter, Florida 33458 TEL. 561-746-8454

CAD. K:\UST\064143\JYC\0803306\0803306.DGN	FB.	PG.	JOB 03-080-306
REF.	OFF. E.C.		DATE MARCH 2004
FLD.	CKD.	SHEET 4 OF 4	DWG. D03-080

064143\JYC\0803306\0803306.DGN 12/01/2005 02:42:02 PM