



CARNAHAN · PROCTOR · CROSS, INC.

CONSULTING ENGINEERS · SURVEYORS · PLANNERS

6101 WEST ATLANTIC BOULEVARD, MARGATE, FLORIDA 33063
PHONE: 954-972-3959 FAX: 954-972-4178

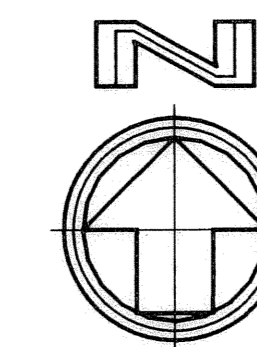
JUNE 2005

030402

JM

OXLEY NORTHERN PUD

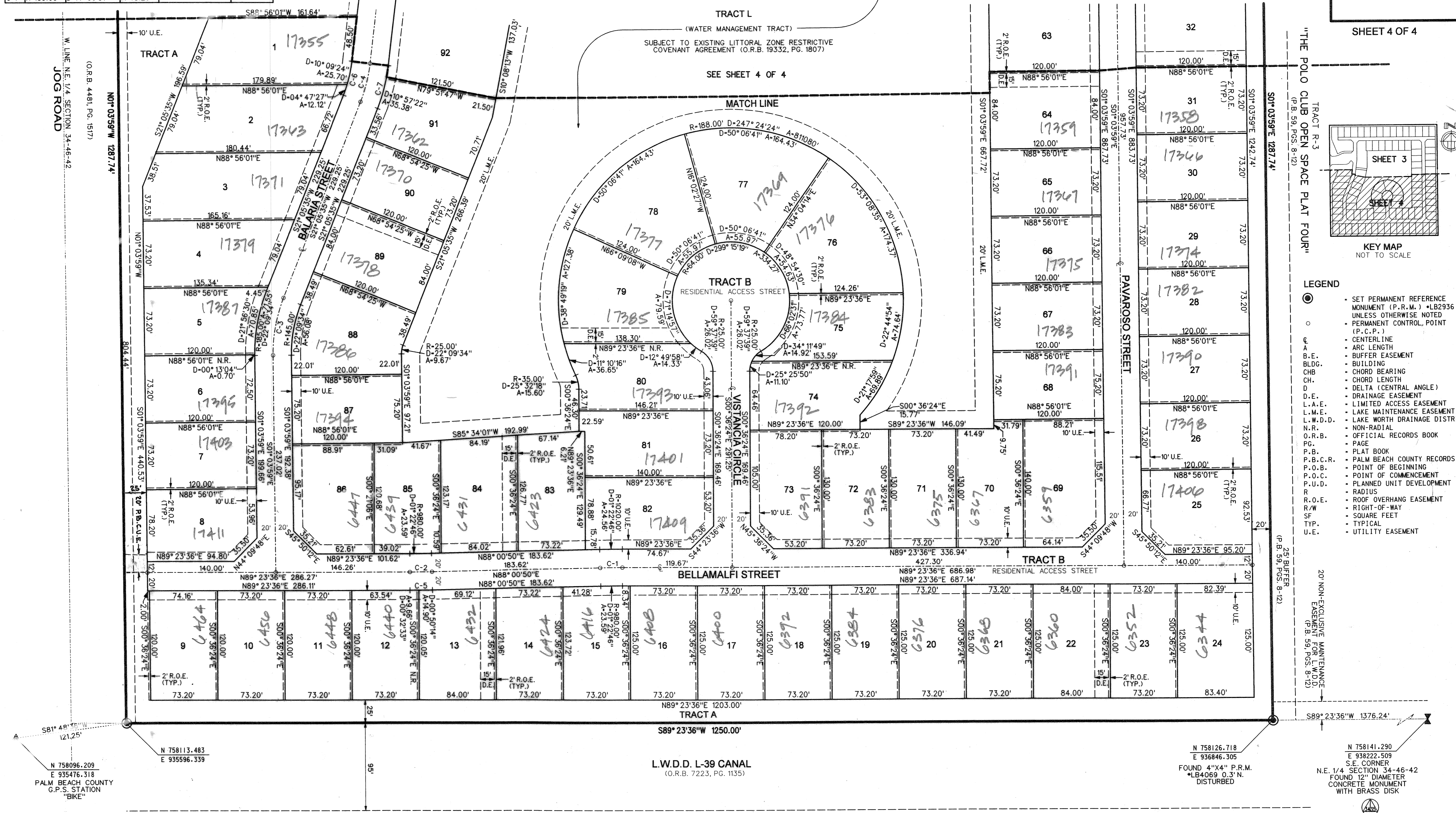
A PORTION OF THE NORTHEAST ONE-QUARTER OF SECTION 34, TOWNSHIP 46 SOUTH, RANGE 42 EAST,
PALM BEACH COUNTY, FLORIDA



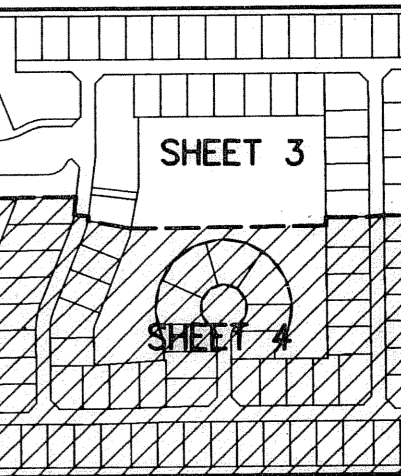
0 20' 40' 100' 200'
10' 30' 50' 150'
SCALE: 1"=50'

175

CURVE DATA					
	RADIUS	CENTRAL ANGLE	ARC LENGTH	CHORD BEARING	CHORD LENGTH
C-1	R=1000.00'	D=01° 22' 46"	A=24.08'	CHB=N88° 42' 13"E	CH=24.08'
C-2	R=1000.00'	D=01° 22' 46"	A=24.08'	CHB=N88° 42' 13"E	CH=24.08'
C-3	R=165.00'	D=22° 09' 34"	A=63.81'	CHB=S10° 00' 48"W	CH=63.42'
C-4	R=165.00'	D=14° 56' 51"	A=43.05'	CHB=S13° 37' 10"W	CH=42.92'
C-5	R=1020.00'	D=01° 22' 46"	A=24.56'		
C-6	R=145.00'	D=14° 56' 51"	A=37.83'		
C-7	R=185.00'	D=14° 56' 51"	A=48.26'		



SHEET 4 OF 4



KEY MAP
NOT TO SCALE

LEGEND

- SET PERMANENT REFERENCE MONUMENT (P.R.M.) - LB2936 UNLESS OTHERWISE NOTED
- PERMANENT CONTROL POINT (P.C.P.)
- CENTERLINE
- ARC LENGTH
- BUFFER EASEMENT
- BUILDING
- CHB
- CHORD BEARING
- CHORD LENGTH
- DELTA (CENTRAL ANGLE)
- DRAINAGE EASEMENT
- L.A.E.
- L.M.E.
- L.W.D.D.
- L.A.K.E. MAINTENANCE EASEMENT
- L.A.K.E. WORTH DRAINAGE DISTRICT
- N.R.
- NON-RADIAL
- OFFICIAL RECORDS BOOK
- PAGE
- P.B.
- P.B. BOOK
- P.B.C.R.
- POINT OF BEGINNING
- POINT OF COMMENCEMENT
- PLANNED UNIT DEVELOPMENT
- RADIUS
- ROOF OVERHANG EASEMENT
- RIGHT-OF-WAY
- SQUARE FEET
- TYP.
- UTILITY EASEMENT

SUBDIVISION OXLEY NORTHERN
 BOOK 106
 FLOOD ZONE B
 QUAD # 21
 SE
 TAZ 9B1
 PUD NAME
 DATE: 05-06-05

FILE: 030402.dwg
 DATE: 05-06-05

N 758096.209
 E 935476.318
 PALM BEACH COUNTY
 G.P.S. STATION
 "BIKE"

L.W.D.D. L-39 CANAL
 (O.R.B. 7223, PG. 1135)

N 758126.718
 E 936846.305
 FOUND 4"x4" P.R.M.
 FOUND 12" DIAMETER
 CONCRETE MONUMENT
 WITH BRASS DISK

N 758141.290
 E 938222.509
 S.E. CORNER
 FOUND 12" DIAMETER
 CONCRETE MONUMENT
 WITH BRASS DISK

UNPLATTED