

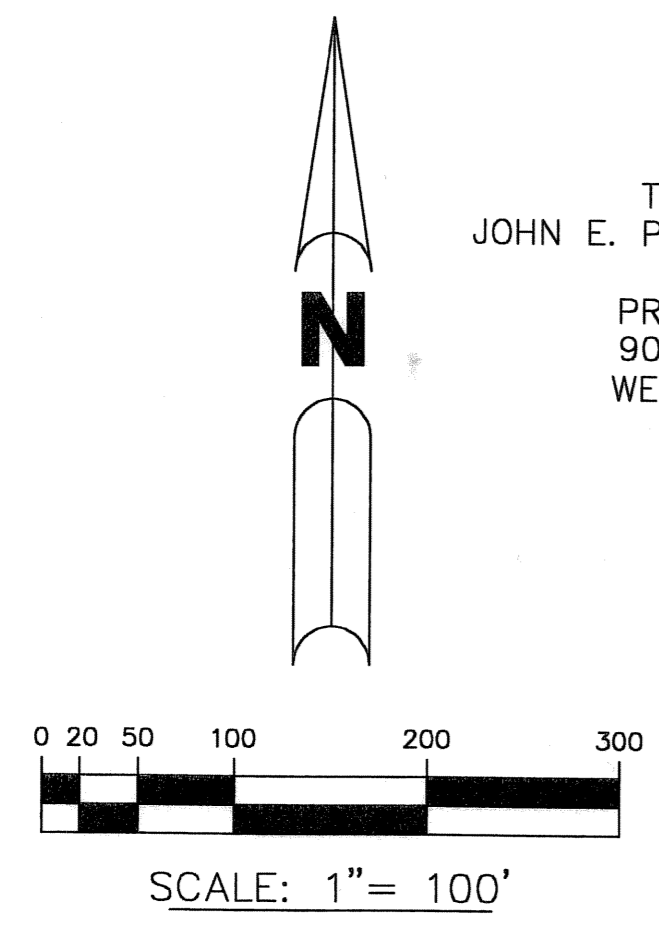
069-005

WEST BOYNTON DISTRICT PARK "B" THE SPRINGS P.U.D.

LYING IN SECTION 10, TOWNSHIP 45 SOUTH, RANGE 42 EAST,
PALM BEACH COUNTY, FLORIDA, AND A REPLAT OF A PORTION OF TRACT 71, BLOCK 40, OF
PALM BEACH FARMS COMPANY PLAT No.3, RECORDED IN PLAT BOOK 2, PAGE 45, OF THE
PUBLIC RECORDS OF PALM BEACH COUNTY, FLORIDA

JANUARY 2005

SHEET 2 OF 4

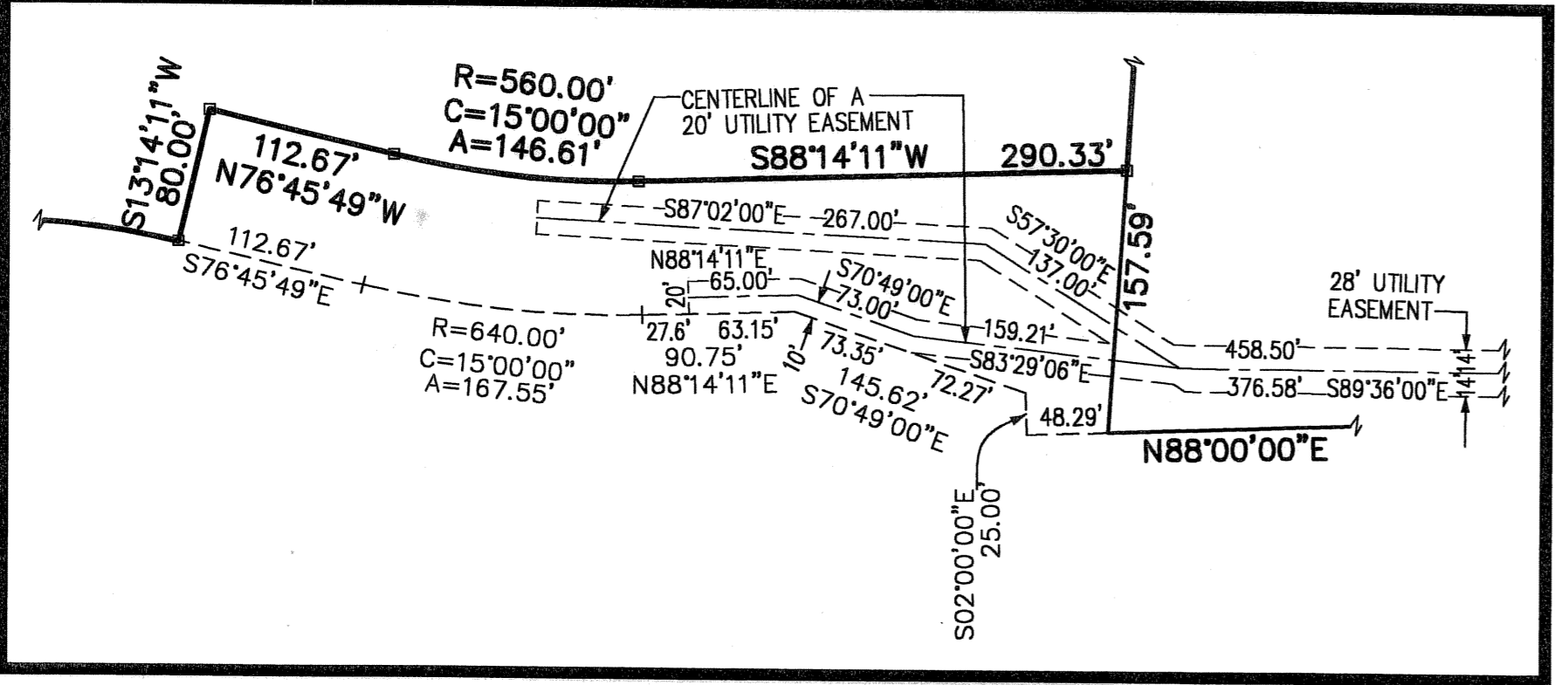
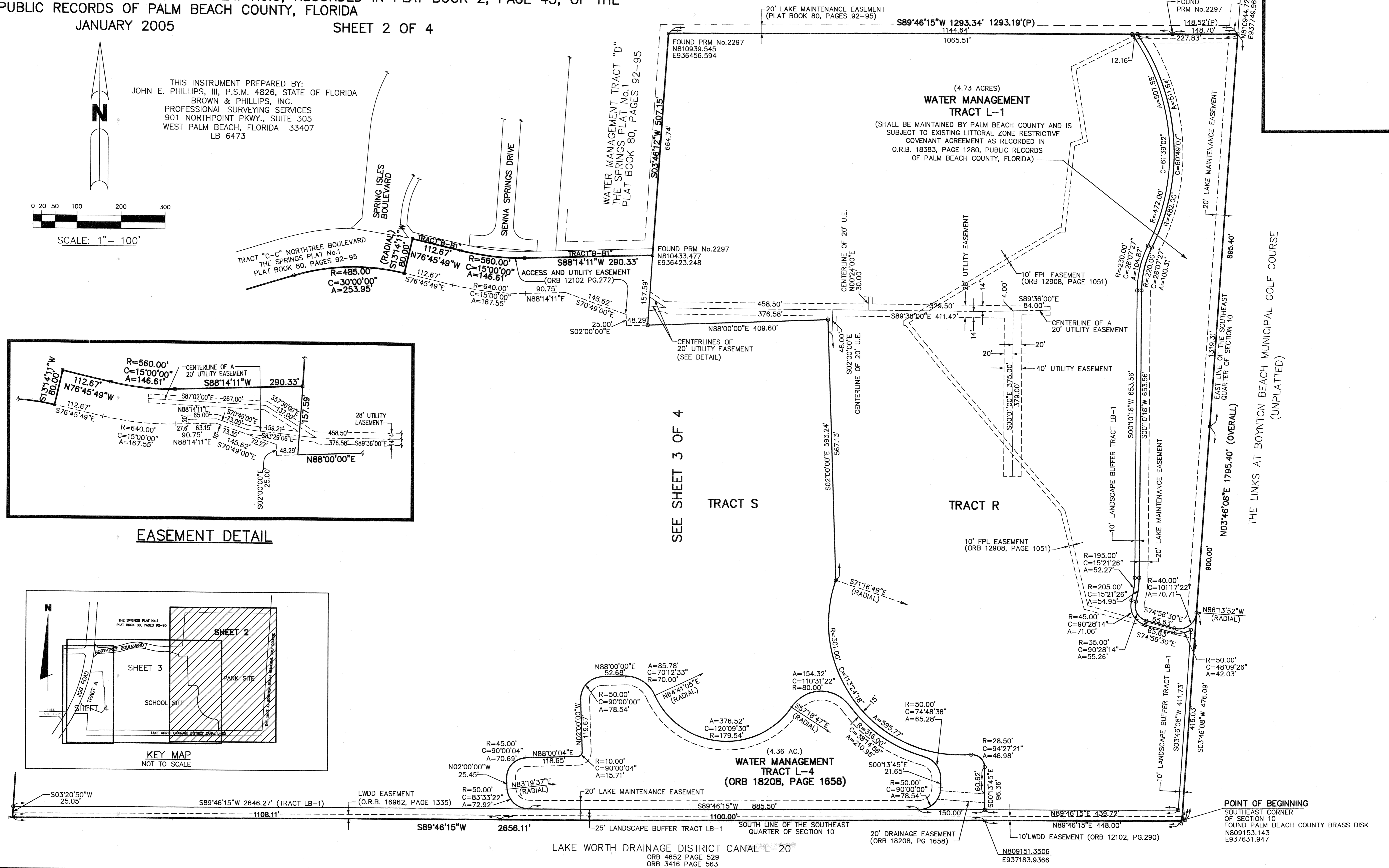


THIS INSTRUMENT PREPARED BY:
JOHN E. PHILLIPS, III, P.S.M. 4826, STATE OF FLORIDA
BROWN & PHILLIPS, INC.
PROFESSIONAL SURVEYING SERVICES
901 NORTHPOINT PKWY., SUITE 305
WEST PALM BEACH, FLORIDA 33407
LB 6473

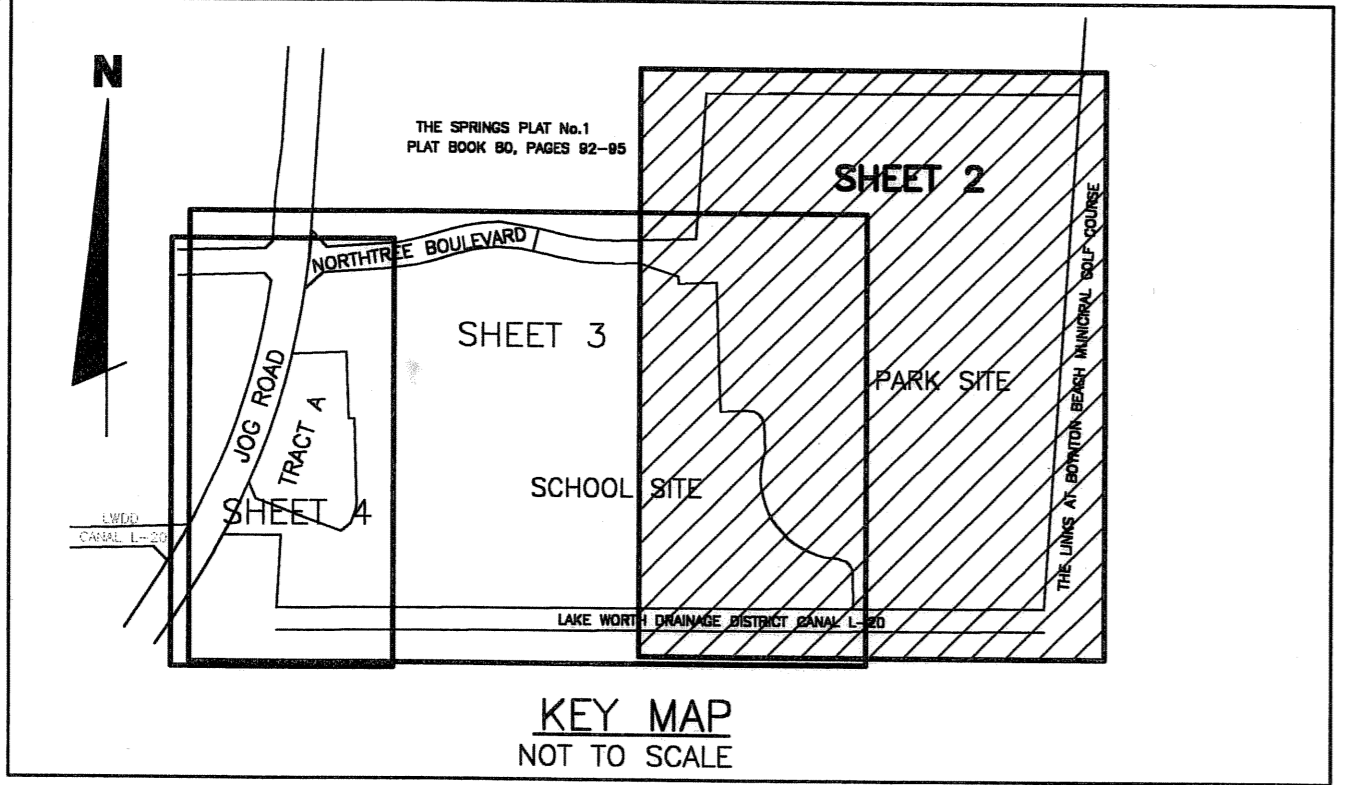
EAST QUARTER CORNER OF SECTION 10
FOUND PALM BEACH COUNTY BRASS DISK
N811915.059
E937813.890

WATER MANAGEMENT TRACT "D"
THE SPRINGS PLAT No.1
PLAT BOOK 80, PAGES 92-95

177



EASEMENT DETAIL



KEY MAP
NOT TO SCALE

SUBDIVISION West Boynton Dist Park B - The Springs
BOOK 06 PAGE 177
FLOOD MAP # 185 A
QUAD # 24 ZONING PUD
SE. ZIP CODE 33462
TAZ 945
PUD NAME THE SPRINGS

THE LINKS AT BOYNTON BEACH MUNICIPAL GOLF COURSE
(UNPLATTED)

LAKE WORTH DRAINAGE DISTRICT CANAL "L-20"
ORB 4652 PAGE 529
ORB 3416 PAGE 563

POINT OF BEGINNING
SOUTHEAST CORNER
OF SECTION 10
FOUND PALM BEACH COUNTY BRASS DISK
N809153.143
E937631.947