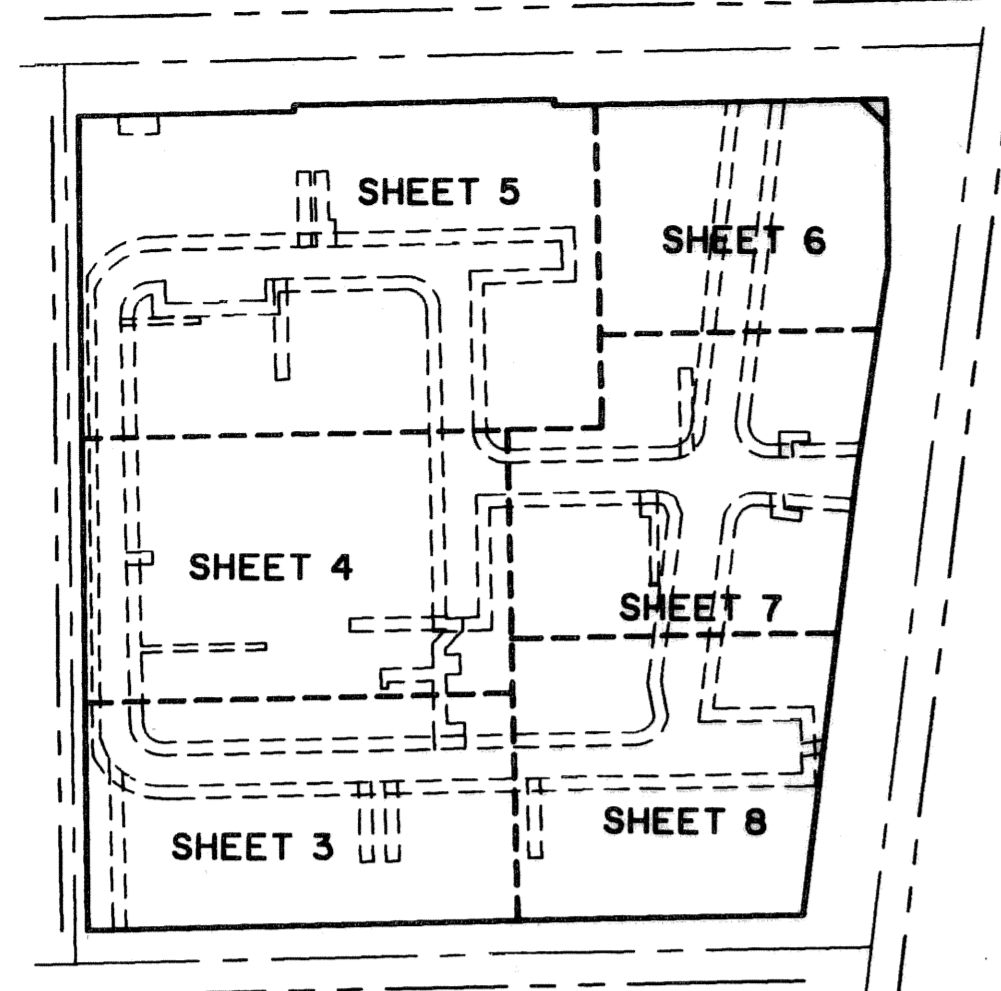


25

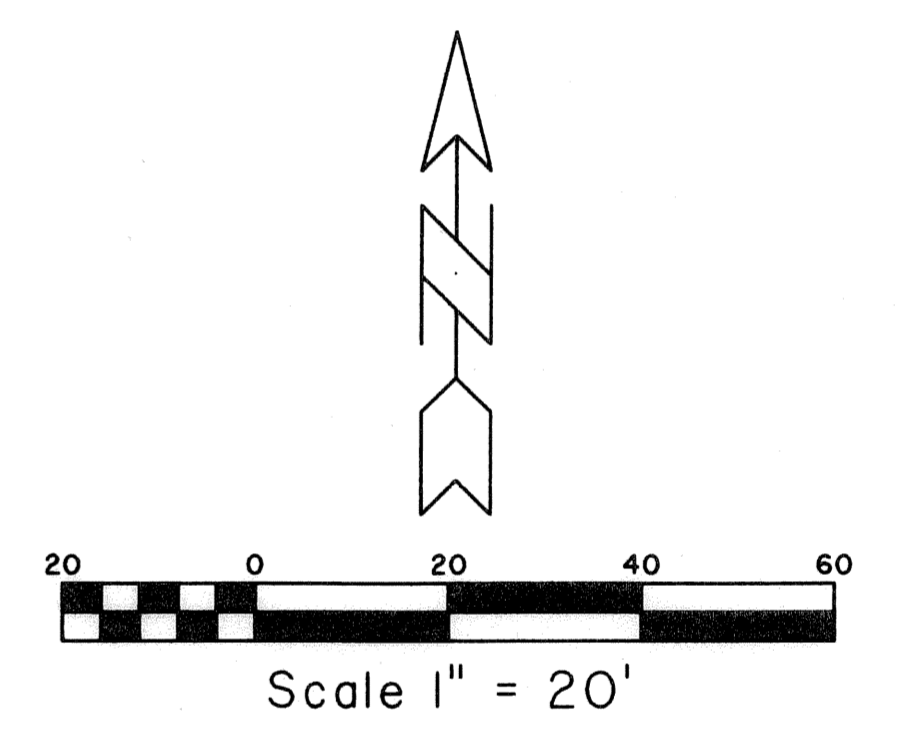
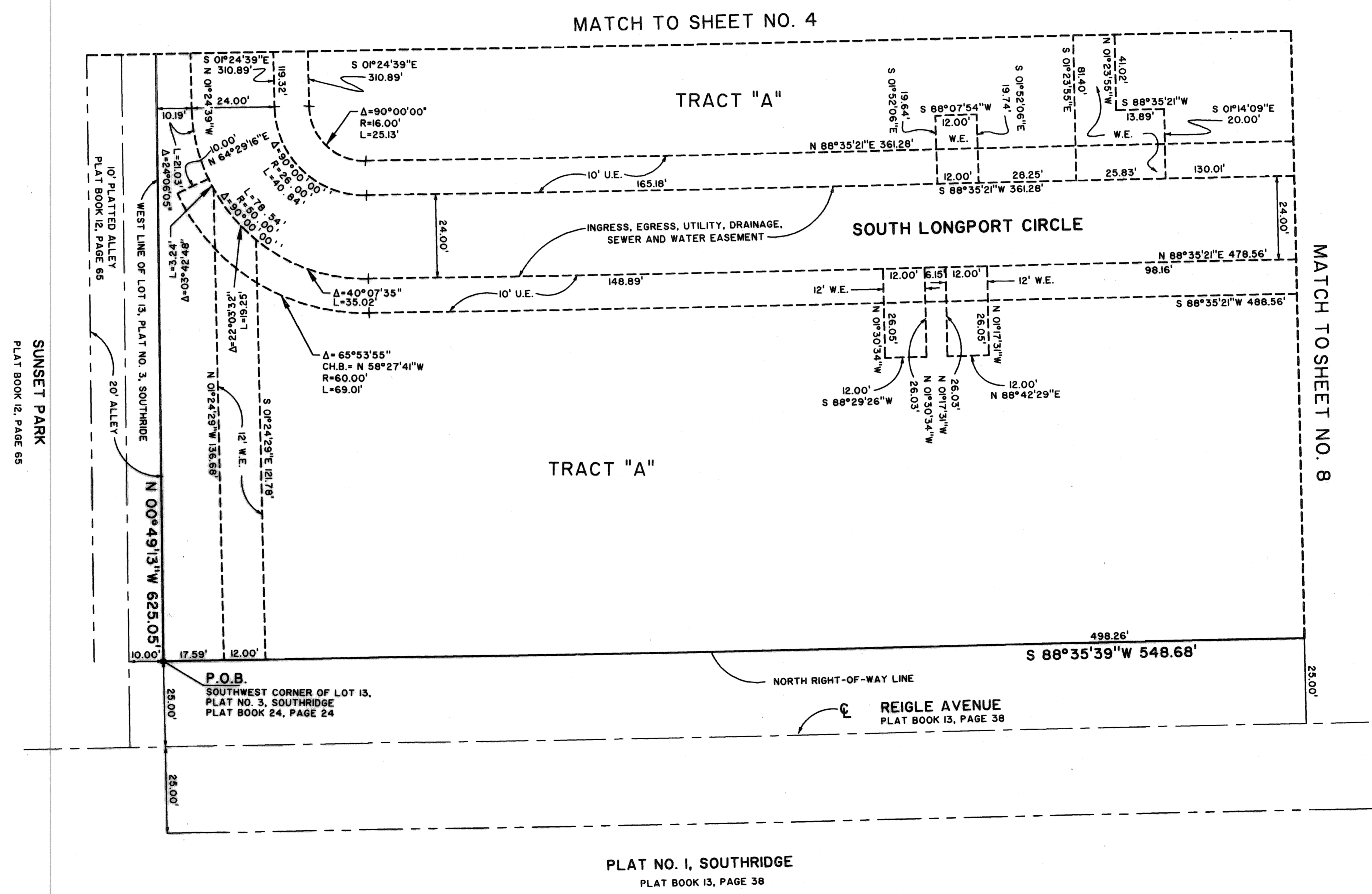
VILLAGE AT SWINTON SQUARE

BEING A REPLAT OF A PORTION OF LOT 13, SECTION 20, TOWNSHIP 46 SOUTH, RANGE 43 EAST, AS RECORDED IN PLAT BOOK 1, PAGE 4, PUBLIC RECORDS OF PALM BEACH COUNTY, FLORIDA AND A REPLAT OF A PORTION OF PLAT NO. 3 OF SOUTHRIDGE, AS RECORDED IN PLAT BOOK 24, PAGE 24, PUBLIC RECORDS OF PALM BEACH COUNTY, FLORIDA. AND A REPLAT OF A PORTION OF SOUTHERN PINES, AS RECORDED IN PLAT BOOK 4, PAGE 60, PUBLIC RECORDS OF PALM BEACH COUNTY, FLORIDA. LYING IN SECTION 20, TOWNSHIP 46 SOUTH, RANGE 43 EAST, CITY OF DELRAY BEACH SHEET 3 OF 8

STATE OF FLORIDA 55
COUNTY OF PALM BEACH
THIS PLAT WAS FILED FOR RECORD AT _____
M. THIS _____ DAY OF _____ 2006
AND DULY RECORDED IN PLAT BOOK NO. _____
ON PAGE _____
SHARON R. BOCK, CLERK & COMPTROLLER
BY _____ D.C.

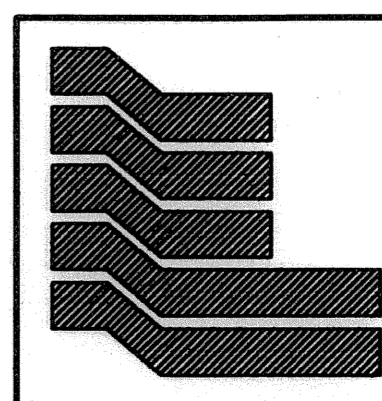


KEY MAP
NOT TO SCALE



SUNSET PARK
PLAT BOOK 12, PAGE 65

MATCH TO SHEET NO. 8



Landmark Surveying & Mapping Inc.
1850 Forest Hill Boulevard
Ph. (561) 433-5405 Suite 100 W.P.B. Florida
LB # 4396

VILLAGE AT SWINTON SQUARE