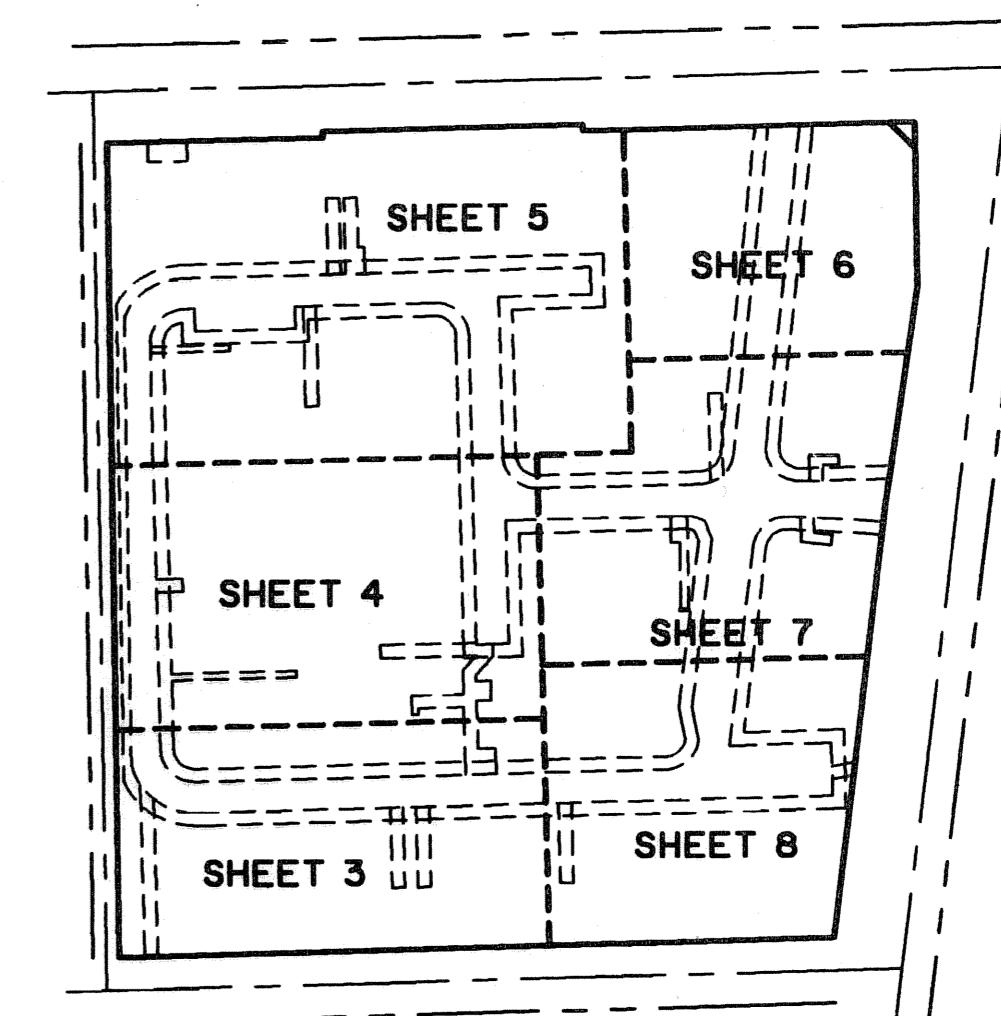
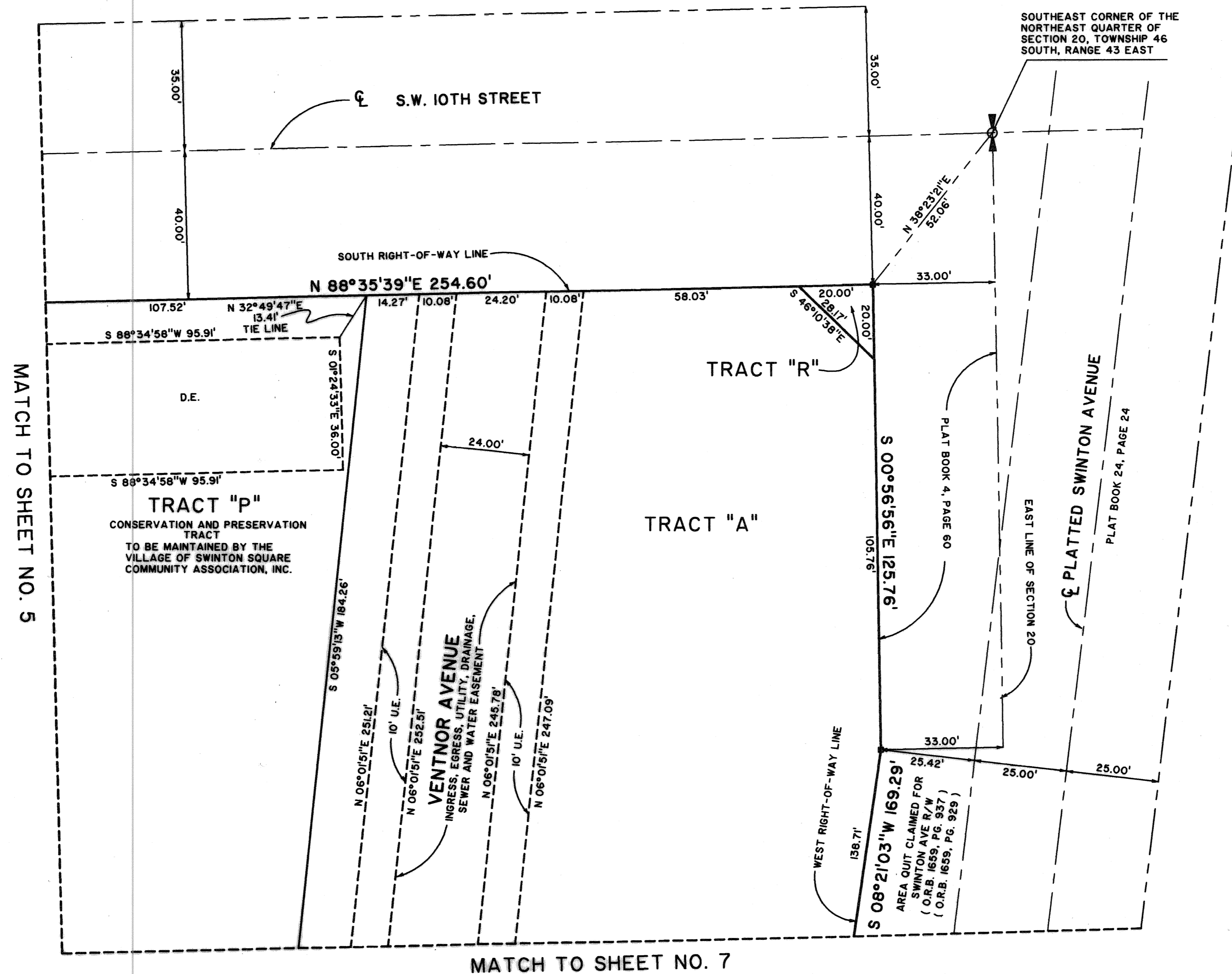


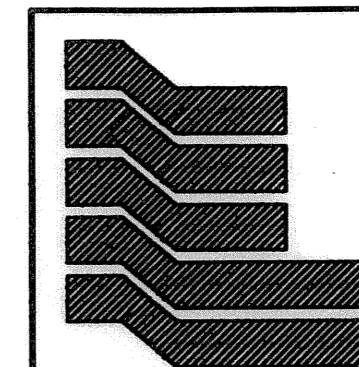
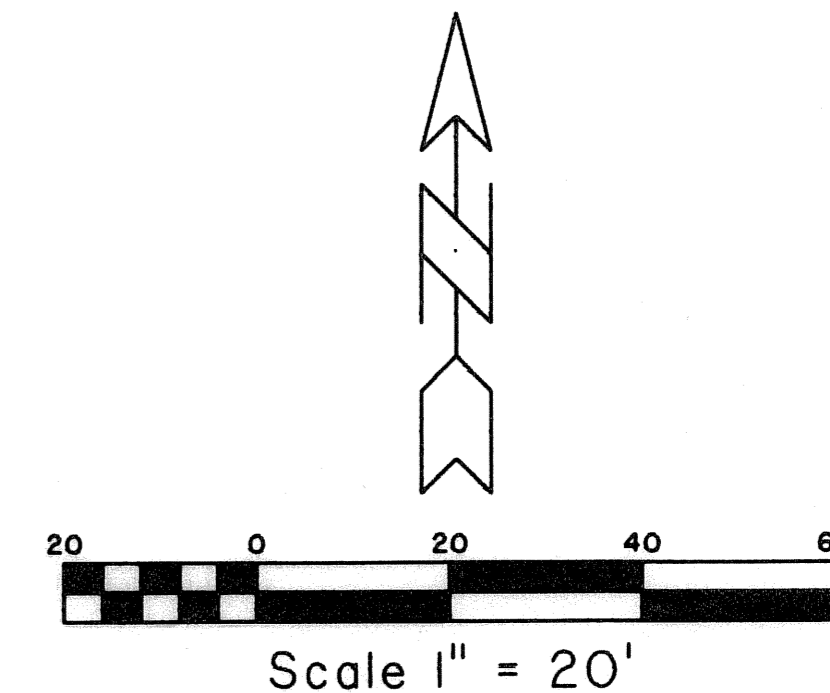
VILLAGE AT SWINTON SQUARE

BEING A REPLAT OF A PORTION OF LOT 13, SECTION 20, TOWNSHIP 46 SOUTH, RANGE 43 EAST,
 AS RECORDED IN PLAT BOOK 1, PAGE 4, PUBLIC RECORDS OF PALM BEACH COUNTY, FLORIDA
 AND A REPLAT OF A PORTION OF PLAT NO. 3 OF SOUTHRIDGE, AS RECORDED IN PLAT
 BOOK 24, PAGE 24, PUBLIC RECORDS OF PALM BEACH COUNTY, FLORIDA.
 AND A REPLAT OF A PORTION OF SOUTHERN PINES, AS RECORDED IN PLAT
 BOOK 4, PAGE 60, PUBLIC RECORDS OF PALM BEACH COUNTY, FLORIDA.
 LYING IN SECTION 20, TOWNSHIP 46 SOUTH, RANGE 43 EAST, CITY OF DELRAY BEACH
 SHEET 6 OF 8

STATE OF FLORIDA SS
 COUNTY OF PALM BEACH
 THIS PLAT WAS FILED FOR RECORD AT _____
 ____ M. THIS ____ DAY OF _____ 2006
 AND DULY RECORDED IN PLAT BOOK NO. _____
 ON PAGE _____
 SHARON R. BOCK, CLERK & COMPTROLLER
 BY _____ D.C.



KEY MAP
 NOT TO SCALE



Landmark Surveying & Mapping Inc.
 1850 Forest Hill Boulevard
 Ph. (561) 433-5405 Suite 100 W.P.B. Florida
 LB # 4396

VILLAGE AT SWINTON SQUARE