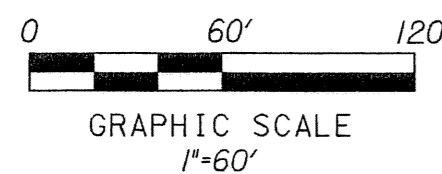
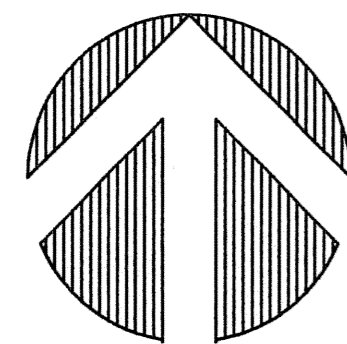


# PERIMETER

**SURVEYING & MAPPING**  
 Certificate of Authorization No. LB7264  
 Prepared by: Jeff S. Hodapp, P.S.M.  
 951 Broken Sound Parkway, Suite 320  
 Boca Raton, Florida 33487  
 Tel: (561) 241-9988  
 Fax: (561) 241-5182



### ABBREVIATIONS:

CH	CHORD
CHB	CHORD BEARING
CONC.	CONCRETE
COR.	CORNER
D	DELTA (CENTRAL ANGLE)
D.E.	DRAINAGE EASEMENT
L	ARCLength
L.B.	LICENSED BUSINESS
L.E.	LANDSCAPE EASEMENT
L.M.E.	LAKE MAINTENANCE EASEMENT
L.M.A.E.	LAKE MAINTENANCE ACCESS EASEMENT
L.S.	LICENSED SURVEYOR
L.W.D.D.	LAKE WORTH DRAINAGE DISTRICT
MON.	MONUMENT
O.R.B.	OFFICIAL RECORDS BOOK
N.R.	NON-RADIAL
P.B.	PLAT BOOK
P.B.C.R.	PALM BEACH COUNTY RECORDS
Pg.	PAGE
P.C.P.	PERMANENT CONTROL POINT
P.O.B.	POINT OF BEGINNING
P.O.C.	POINT OF COMMENCEMENT
P.R.M.	PERMANENT REFERENCE MONUMENT
P.S.M.	PROFESSIONAL SURVEYOR & MAPPER
P.U.D.	PLANNED UNIT DEVELOPMENT
R	RADIUS
R.E.E.	ROOF ENCROACHMENT EASEMENT
R/W	RIGHT-OF-WAY
SEC.	SECTION
S.F.	SQUARE FEET
U.E.	UTILITY EASEMENT

### LEGEND:

⊙	SET P.R.M. (UNLESS OTHERWISE NOTED)-4" X4" CONC. MON. WITH ALUMINUM DISK STAMPED P.R.M. • LB7264
⊕	CENTERLINE

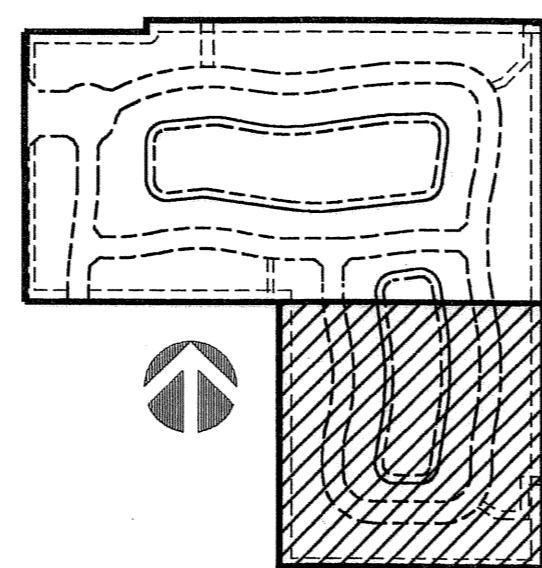
FOUND U.S. COAST & GEODETIC DISK IN CONC. MON. STAMPED "HAGAN 1970" N. 795703.2354 E. 929474.1089

# BRIELLA P.U.D.

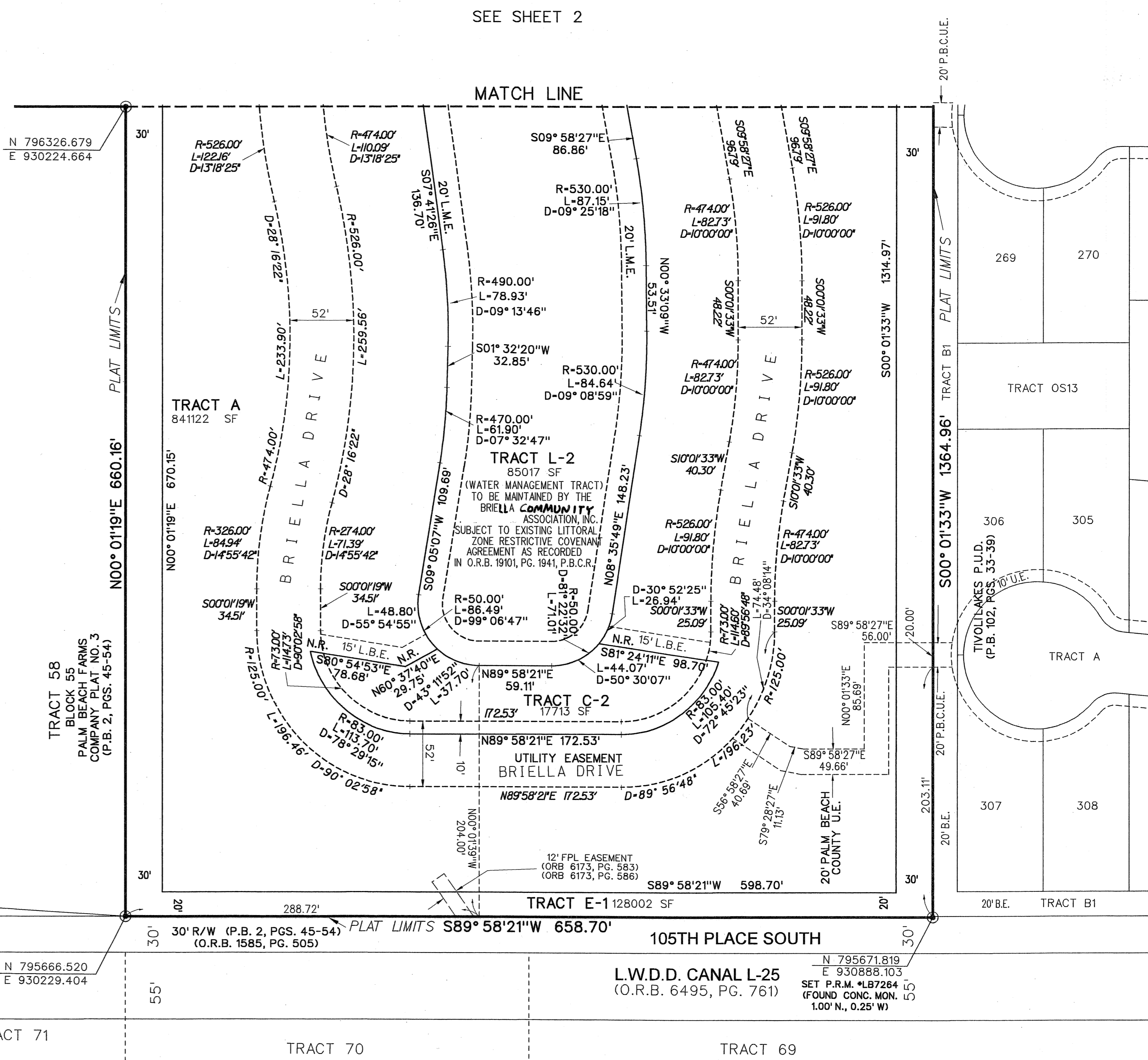
A REPLAT OF ALL OF TRACTS 37, 38, 39, 59 AND 60, BLOCK 55, TOGETHER WITH A PORTION OF TRACT 40, BLOCK 55 AND THE PLATTED 30.00 FOOT WIDE RIGHT-OF-WAY ADJACENT THERETO, ALL OF "PALM BEACH FARMS COMPANY PLAT NO. 3" (P.B. 2, PGS. 45-54, P.B.C.R.), AND A PORTION OF TRACT C, "MIZNER FALLS" (P.B. 91, PGS. 7-14, P.B.C.R.) IN SECTION 28, TOWNSHIP 45 SOUTH, RANGE 42 EAST, PALM BEACH COUNTY, FLORIDA.  
 DECEMBER, 2005

33

SHEET 3 OF 3



KEY MAP NOT TO SCALE



SUBDIVISION Briella  
 BOOK 07  
 FLOOD ZONE AA  
 QUAD # 50  
 SE  
 TAZ 955  
 PUD NAME