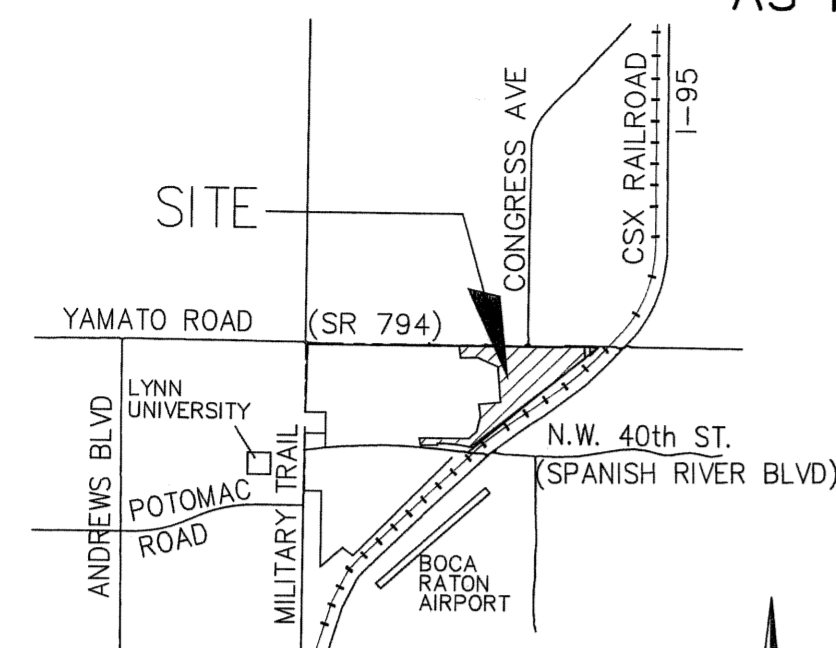
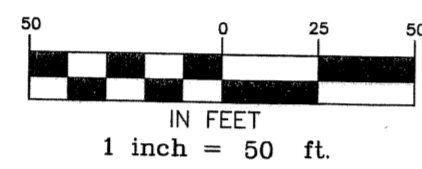


# BOCA VILLAGE PLAT TWO

LYING IN SECTION 12, TOWNSHIP 47 SOUTH, RANGE 42 EAST  
AND SECTION 7, TOWNSHIP 47 SOUTH, RANGE 43 EAST  
CITY OF BOCA RATON, PALM BEACH COUNTY, FLORIDA  
A REPLAT OF ALL OF PARCEL I, BOCA VILLAGE MASTER PLAT  
AS RECORDED IN PLAT BOOK 102, PAGES 80-88, OF THE PUBLIC RECORDS OF  
PALM BEACH COUNTY, FLORIDA  
SHEET NO. 5 OF 6  
DAVIS & PURMORT, INC.  
DEERFIELD BEACH, FLORIDA  
2006



LOCATION MAP  
Not To Scale



BEARINGS SHOWN HEREON ARE RELATIVE TO THE WEST LINE OF SECTION 12, TOWNSHIP 47 SOUTH, RANGE 42 EAST, PALM BEACH COUNTY, FLORIDA WHICH BEARS SOUTH 01°18'47" EAST.

BUILDING SETBACK LINES SHALL BE NO LESS THAN REQUIRED BY CITY OF BOCA RATON ZONING REGULATIONS.

THERE SHALL BE NO TREES OR SHRUBS PLACED ON UTILITY EASEMENTS WHICH ARE PROVIDED FOR WATER AND SEWER USE OR UPON DRAINAGE EASEMENTS. LANDSCAPING ON OTHER UTILITY EASEMENTS SHALL BE ALLOWED ONLY AFTER CONSENT OF ALL UTILITY COMPANIES OCCUPYING THE SAME.

EASEMENTS ARE FOR PUBLIC UTILITIES, UNLESS OTHERWISE NOTED.

WHERE UTILITY AND DRAINAGE EASEMENTS CROSS, UTILITY EASEMENTS TAKE PRECEDENCE.

DIMENSIONS SHOWN HEREON ARE GROUND DISTANCES AND ARE IN FEET AND DECIMAL PARTS THEREOF AND ARE BASED ON THE DEFINITION OF A FOOT AS ADOPTED BY THE UNITED STATES BUREAU OF STANDARDS AND REFER TO THE HORIZONTAL PLANE.

THIS PLAT IS SUBJECT TO THE PROVISIONS OF ARTICLE III OF CHAPTER 27, CODE OF ORDINANCES, CITY OF BOCA RATON, FLORIDA WITH RESPECT TO THE CREATION AND MANAGEMENT OF THE CONSERVATION EASEMENTS.

NOTICE: THIS PLAT, AS RECORDED IN ITS GRAPHIC FORM, IS THE OFFICIAL DEPICTION OF THE SUBDIVIDED LANDS DESCRIBED HEREIN AND WILL IN NO CIRCUMSTANCES BE SUPPLANTED IN AUTHORITY BY ANY OTHER GRAPHIC OR DIGITAL FORM OF THE PLAT. THERE MAY BE ADDITIONAL RESTRICTIONS THAT ARE NOT RECORDED ON THIS PLAT THAT MAY BE FOUND IN THE PUBLIC RECORDS OF THIS COUNTY.

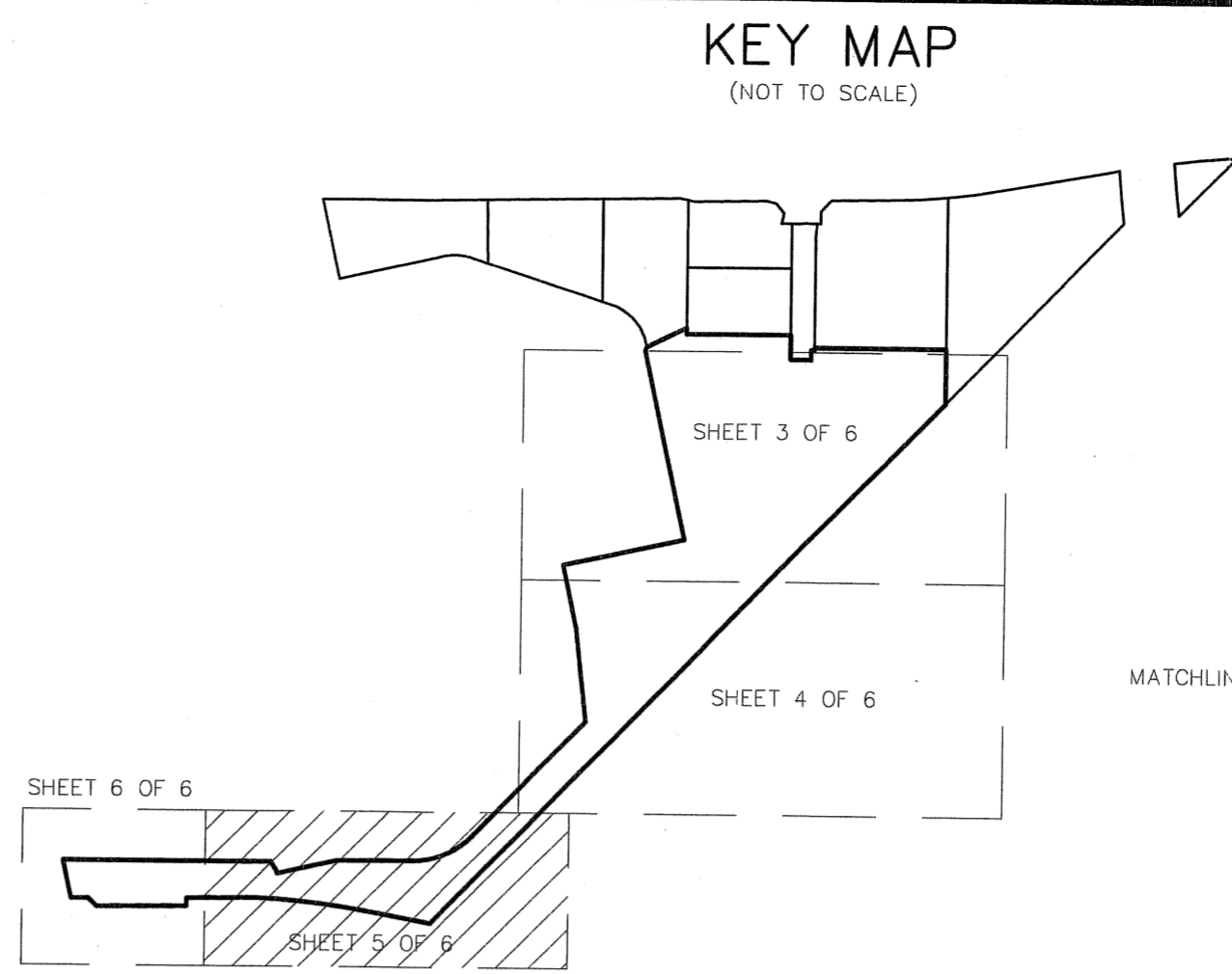
OTHER NOTES:

(ALL EASEMENTS PER PLAT, OR RECORDED BY O.R.B. IN PALM BEACH COUNTY, (BELOW); UNLESS NOTED OTHERWISE).

- \* = RECORDED IN (O.R.B. 15711, PG. 0838).
- \*\* = RECORDED IN (O.R.B. 15711, PG. 1080).
- \*\*\* = RECORDED IN (O.R.B. 16841, PG. 1933). (AMENDED)

LEGEND:

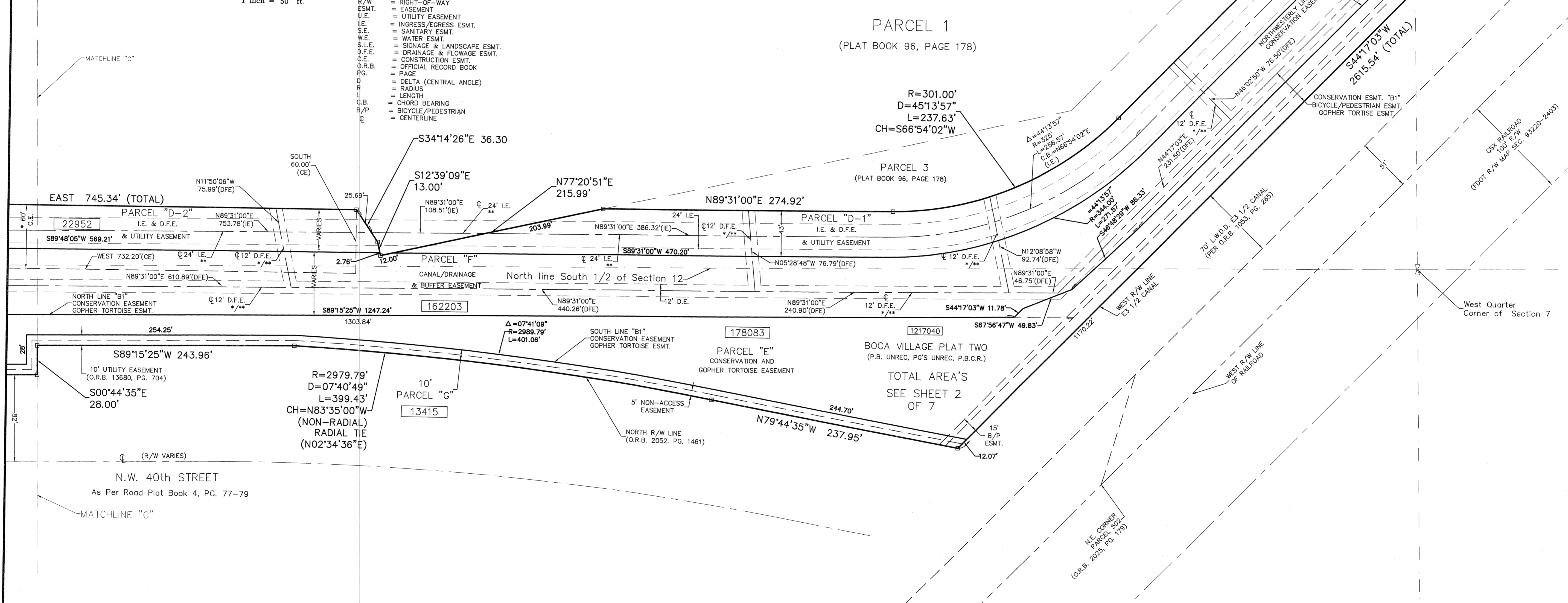
- R/W = RIGHT-OF-WAY
- ESMT. = EASEMENT
- U.E. = UTILITY EASEMENT
- I.E. = INGRESS/EGRESS ESMT.
- S.E. = SANITARY ESMT.
- W.E. = WATER ESMT.
- S.L.E. = SIGNAGE & LANDSCAPE ESMT.
- D.F.E. = DRAINAGE & FLOWAGE ESMT.
- C.E. = CONSTRUCTION ESMT.
- O.R.B. = OFFICIAL RECORD BOOK
- P.G. = PAGE
- Δ = DELTA (CENTRAL ANGLE)
- R = RADIUS
- L = LENGTH
- C.B. = CHORD BEARING
- B/P = BICYCLE/PEDESTRIAN
- ⊕ = CENTERLINE



38

STATE OF FLORIDA  
COUNTY OF PALM BEACH  
This Plat was filed for  
record at \_\_\_\_\_ M. this \_\_\_\_\_ day  
of \_\_\_\_\_ 2006, and duly  
recorded in Plat Book No. \_\_\_\_\_  
on Pages \_\_\_\_\_ thru \_\_\_\_\_.

By: \_\_\_\_\_ D.C.  
SHARON R. BOCK  
Clerk Circuit Court



**THIS INSTRUMENT PREPARED BY:**  
**DAVIS & PURMORT, INC.**  
LB #0007219  
Land Surveyors • Land Development • Consultants • Planners  
843 SOUTHEAST 8th AVENUE - DEERFIELD BEACH, FL 33441  
Phone: (954) 421-9101 & (954) 698-9101 Fax: (954) 421-5201

Subdivisions & Condominiums • Land & Site Planning • Sanitary Sewer Systems • Water System • Drainage Design • Paving Design  
Lot Surveys • Mortgage Surveys • Acreage Surveys • Topographic Surveys • Record Plats • Condominium Plats • Construction Layout