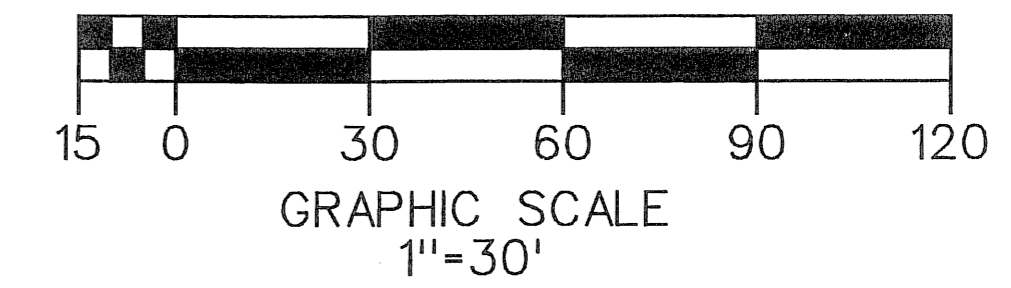
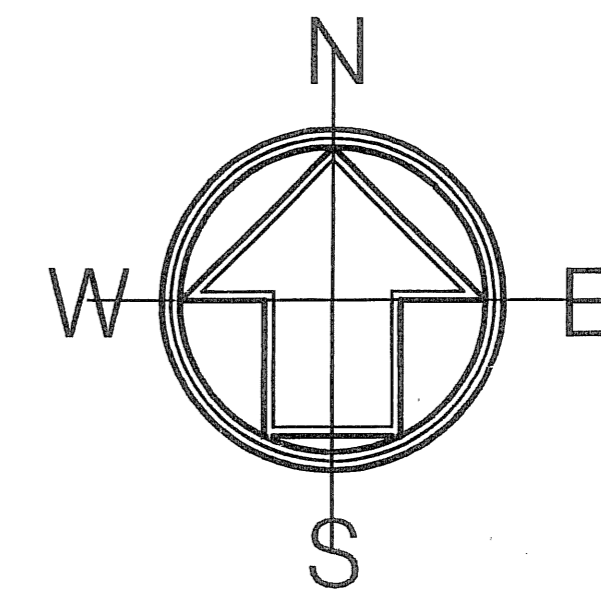


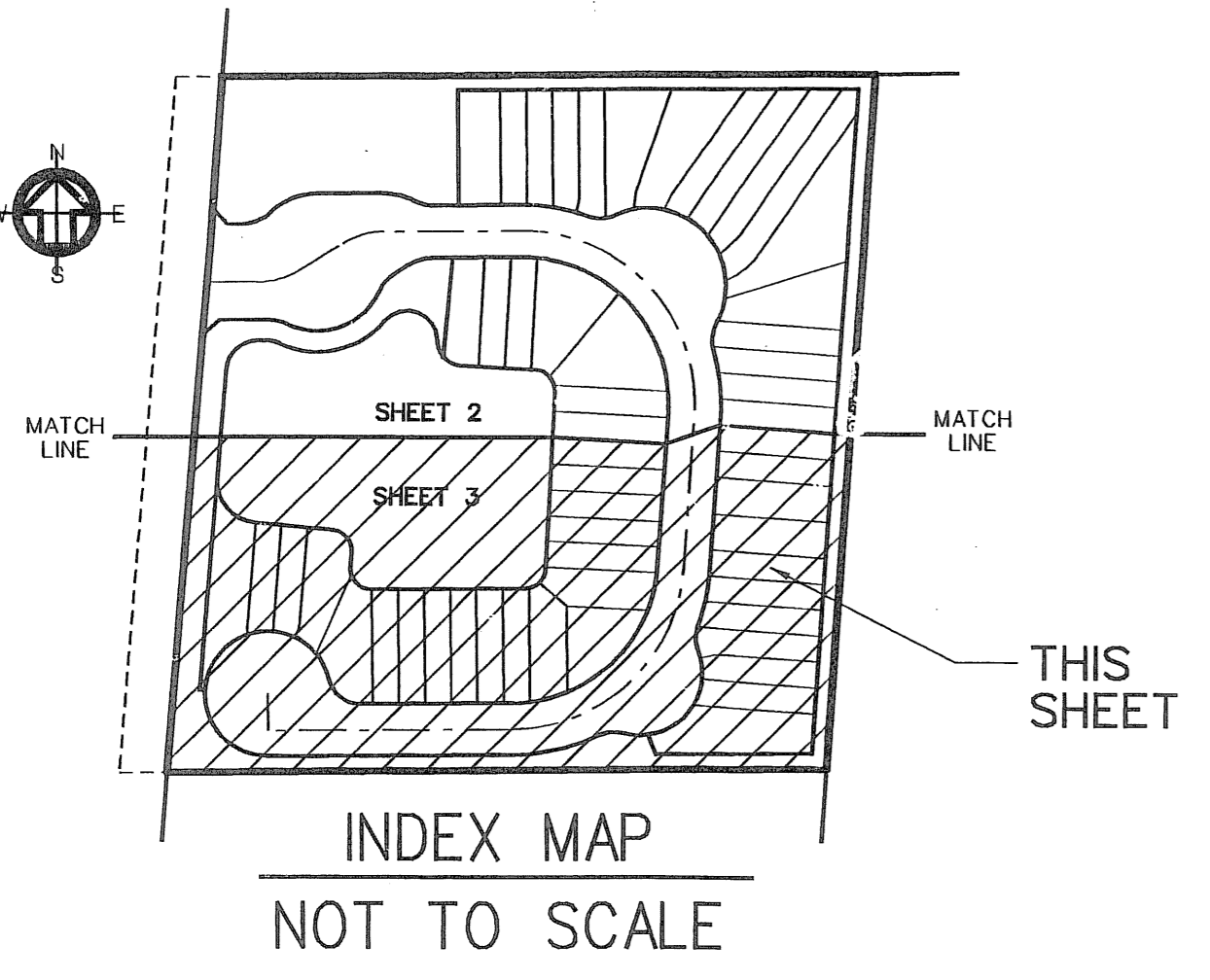
COLONY LAKE

A PORTION OF
SECTION 12, TOWNSHIP 45 SOUTH, RANGE 42 EAST
PALM BEACH COUNTY, FLORIDA

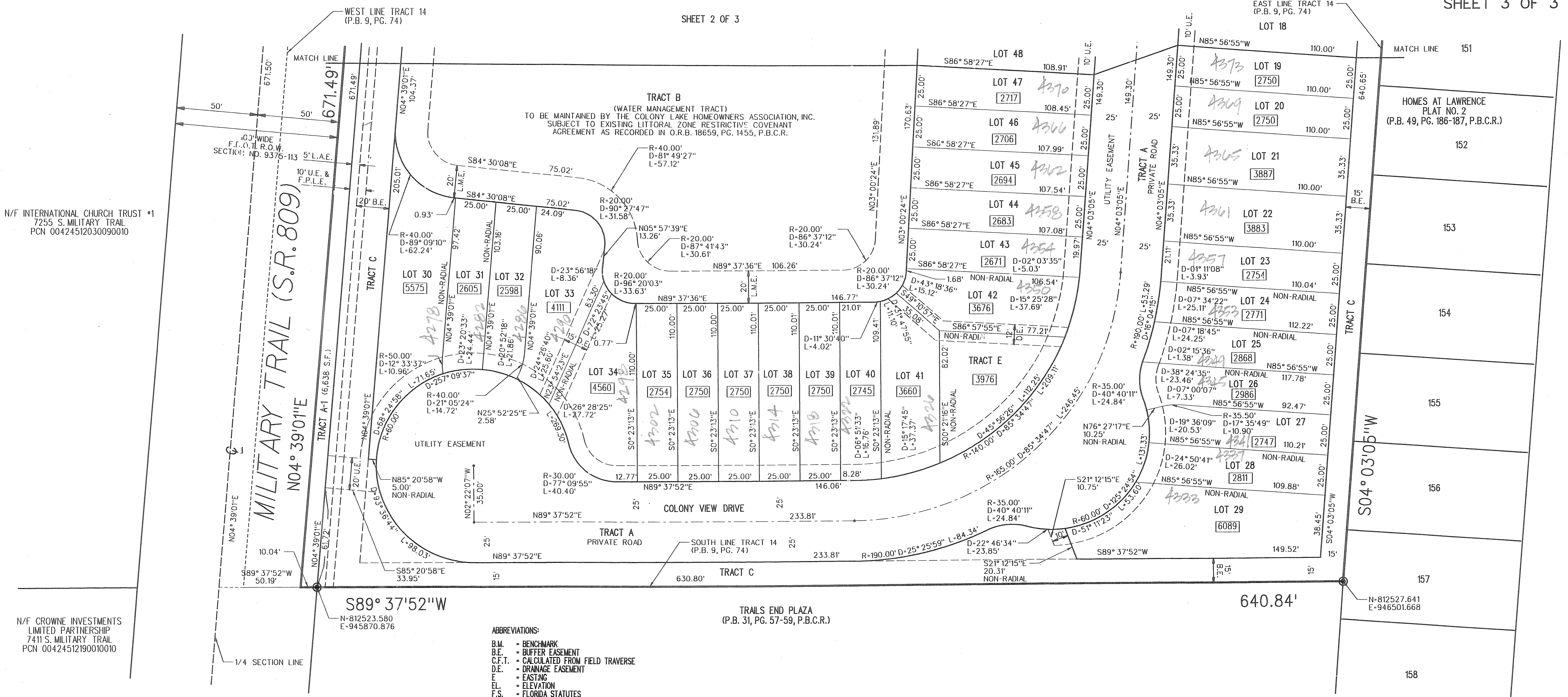
THIS INSTRUMENT PREPARED BY SCOTT A. GUZZI
SCOTT A. GUZZI AND ASSOCIATES, INC. - SURVEYORS AND MAPPERS
6041 KIMBERLY BOULEVARD, SUITE H, NORTH LAUDERDALE, FLORIDA, 33068



SHEET 3 OF 3



SHEET 2 OF 3

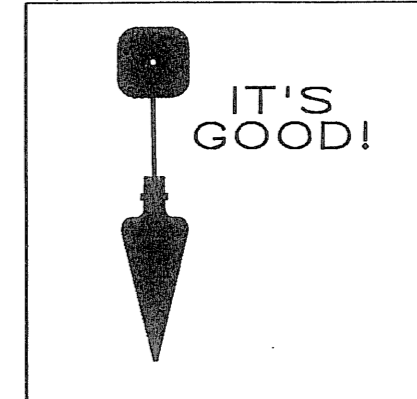


N/F INTERNATIONAL CHURCH TRUST #1
7255 S. MILITARY TRAIL
PCN 00424512030090010

N/F CROWNE INVESTMENTS
LIMITED PARTNERSHIP
7411 S. MILITARY TRAIL
PCN 00424512190010010

- ABBREVIATIONS:
- B.M. = BENCHMARK
 - B.E. = BUFFER EASEMENT
 - C.F.T. = CALCULATED FROM FIELD TRAVERSE
 - D.E. = DRAINAGE EASEMENT
 - E. = EASTING
 - EL. = ELEVATION
 - F.S. = FLORIDA STATUTES
 - F.P.L.E. = FLORIDA POWER & LIGHT EASEMENT
 - L.A.E. = LIMITED ACCESS EASEMENT
 - L.M.A.E. = LAKE MAINTENANCE ACCESS EASEMENT
 - L.M.E. = LAKE MAINTENANCE EASEMENT
 - L.S.E. = LIFT STATION EASEMENT
 - L.S.A.E. = LIFT STATION ACCESS EASEMENT
 - N. = NORTHING
 - O.E. = OVERHANG EASEMENT
 - O.R.B. = OFFICIAL RECORDS BOOK
 - P.B. = PLAT BOOK
 - P.B.C.R. = PALM BEACH COUNTY RECORDS
 - P.P. = PACE
 - P.O.B. = POINT OF BEGINNING
 - P.O.C. = POINT OF COMMENCEMENT
 - SECT. = SECTION
 - U.E. = UTILITY EASEMENT

STENOGRAPHY
COLONY LAKE
PAGE 42
BOOK 107
PLAT 1904
RECORDS ZONE B
SECTION 12
TOWNSHIP 45
RANGE 42
EAST
PAGE 415
SUB PLAT



SCOTT A. GUZZI & ASSOC., INC.
Surveyors and Mappers
6041 KIMBERLY BOULEVARD
SUITE H
NORTH LAUDERDALE, FLORIDA 33068

COLONY LAKE