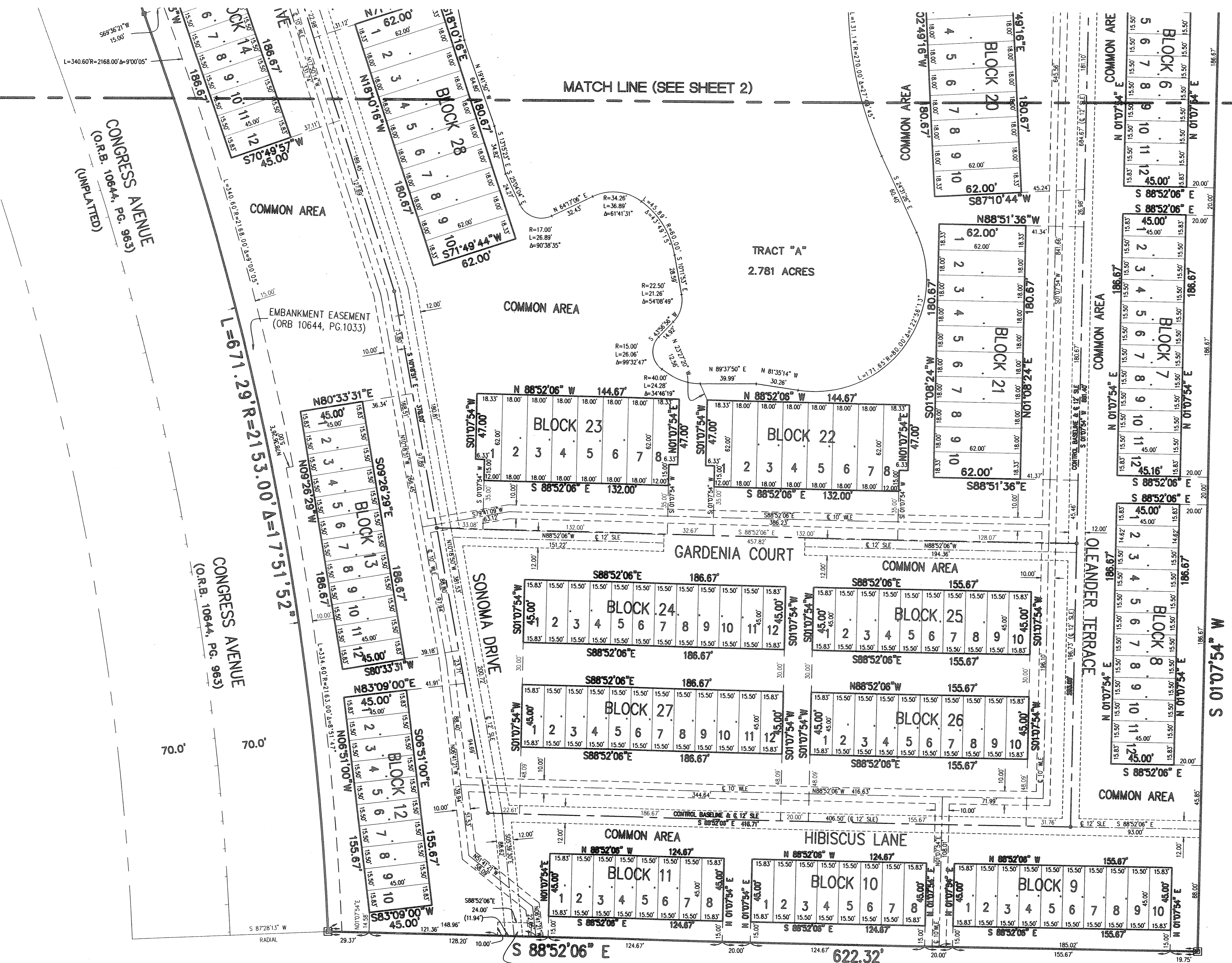


# SONOMA BAY

Being a replat of Parcel "A" and Lake Parcel L-1 of the plat of Sierra-Sonoma Bay as recorded in Plat Book 102, Pages 149 through 152 and lying in the Northeast Quarter of Section 30, Township 42 South, Range 43 East, City of Riviera Beach, Palm Beach County, Florida.

0063

SHEET 3 OF 3  
JUNE 2005



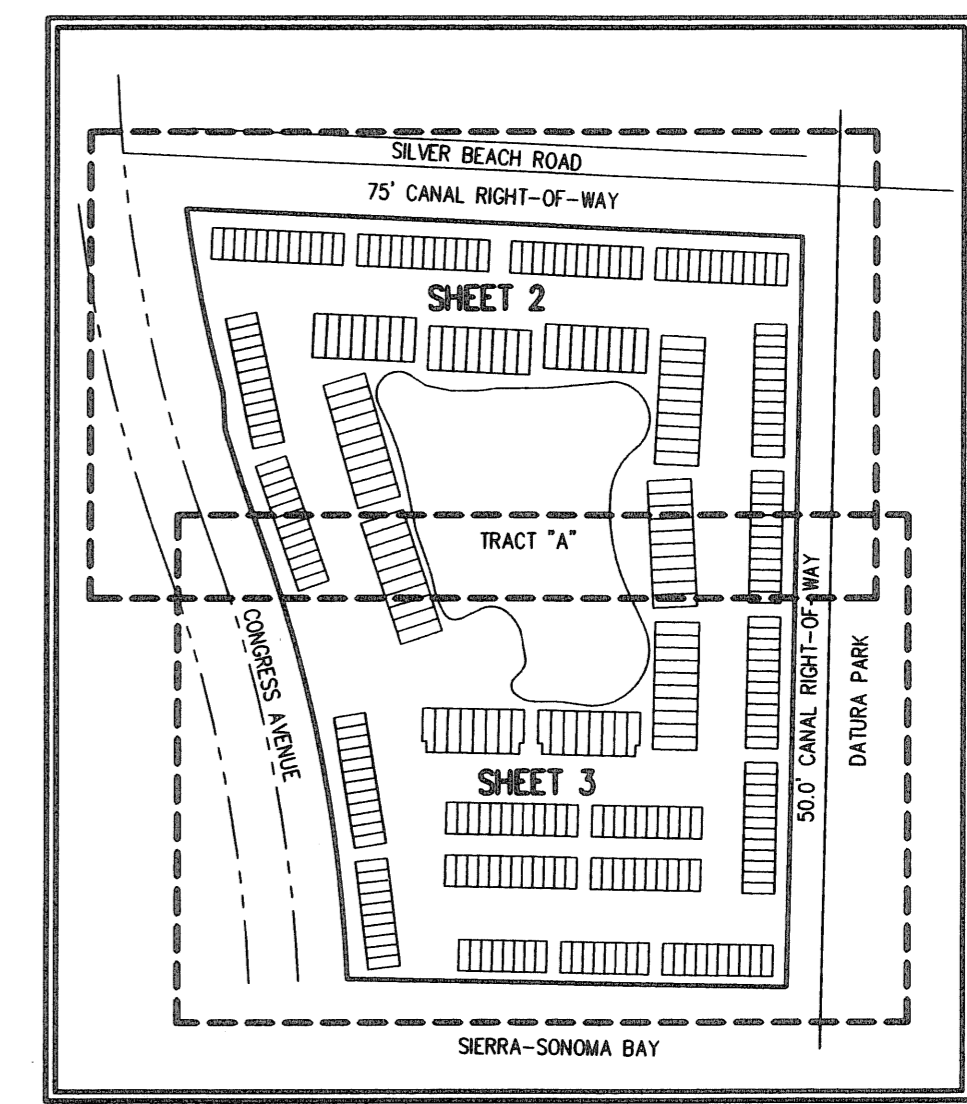
AVENUE "U" DATURA PARK  
(P.B. 27, PGS. 165 & 166)

50.0' CANAL RIGHT-OF-WAY (ORB. 800, PAGE 312).

EAST LINE OF NE QUARTER SECTION 30-42-43

### LEGEND

- U.E. = UTILITY EASEMENT
- D.E. = DRAINAGE EASEMENT
- [Symbol] = PERMANENT REFERENCE MONUMENT #2633 SET.
- = PERMANENT CONTROL POINT #2633.
- CH = CHORD
- R = RADIUS
- L = ARC LENGTH
- Δ = CENTRAL ANGLE
- (N.R.) = NON-RADIAL
- O.R.B. = OFFICIAL RECORD BOOK
- PG. = PAGE
- L.M.E. = LAKE MAINTENANCE EASEMENT
- W.L.E. = LAKE WATER LINE EASEMENT
- S.L.E. = SEWER LINE EASEMENT
- ℄ = CENTERLINE



KEY SHEET  
N.T.S.

THIS INSTRUMENT PREPARED BY ANDRE' RAYMAN, P.S.M. LS#4938 STATE OF FLORIDA.  
SFRN, INC., ENGINEERS, SURVEYORS & MAPPERS  
1201 BELVEDERE ROAD, WEST PALM BEACH, FLORIDA 33405.  
CERTIFICATE OF AUTHORIZATION NO. LB0006803

<b>SONOMA BAY</b>	
DATE	03/23/2005
SCALE	1" = 50'
CAD FILE	4016.03.dwg
SISK PROJECT	4016
DRAWN	SFRN STAFF
CHECKED	G. RAYMAN

S H E E T	3/3
	JOB NO.
04016.03	



SIERRA-SONOMA BAY - PLAT BOOK 102, PAGES 149-152

V:\Land Projects\F214016.dwg\4016.03.plt.dwg 9/9/2005 8:46:53 AM EST