



SURVEYING & MAPPING
Certificate of Authorization No. LB7264
Prepared by: Jeff S. Hodapp, P.S.M.
951 Broken Sound Parkway, Suite 320
Boca Raton, Florida, 33487
Tel: (561) 241-9988
Fax: (561) 241-5182

VERONA PALMS

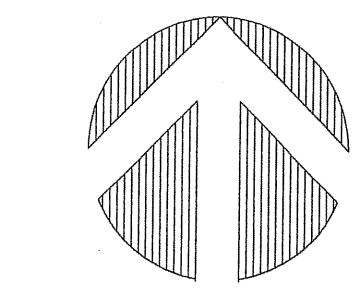
A REPLAT OF PORTIONS OF TRACTS 4, 5 AND 6, SUBDIVISION OF THE
SOUTHWEST ONE-QUARTER OF SECTION 36, TOWNSHIP 44 SOUTH, RANGE 42 EAST
(P.B. 3, PG. 10, P.B.C.R.), CITY OF GREENACRES, PALM BEACH COUNTY, FLORIDA.

JANUARY, 2006
February

SEE SHEET 3

75

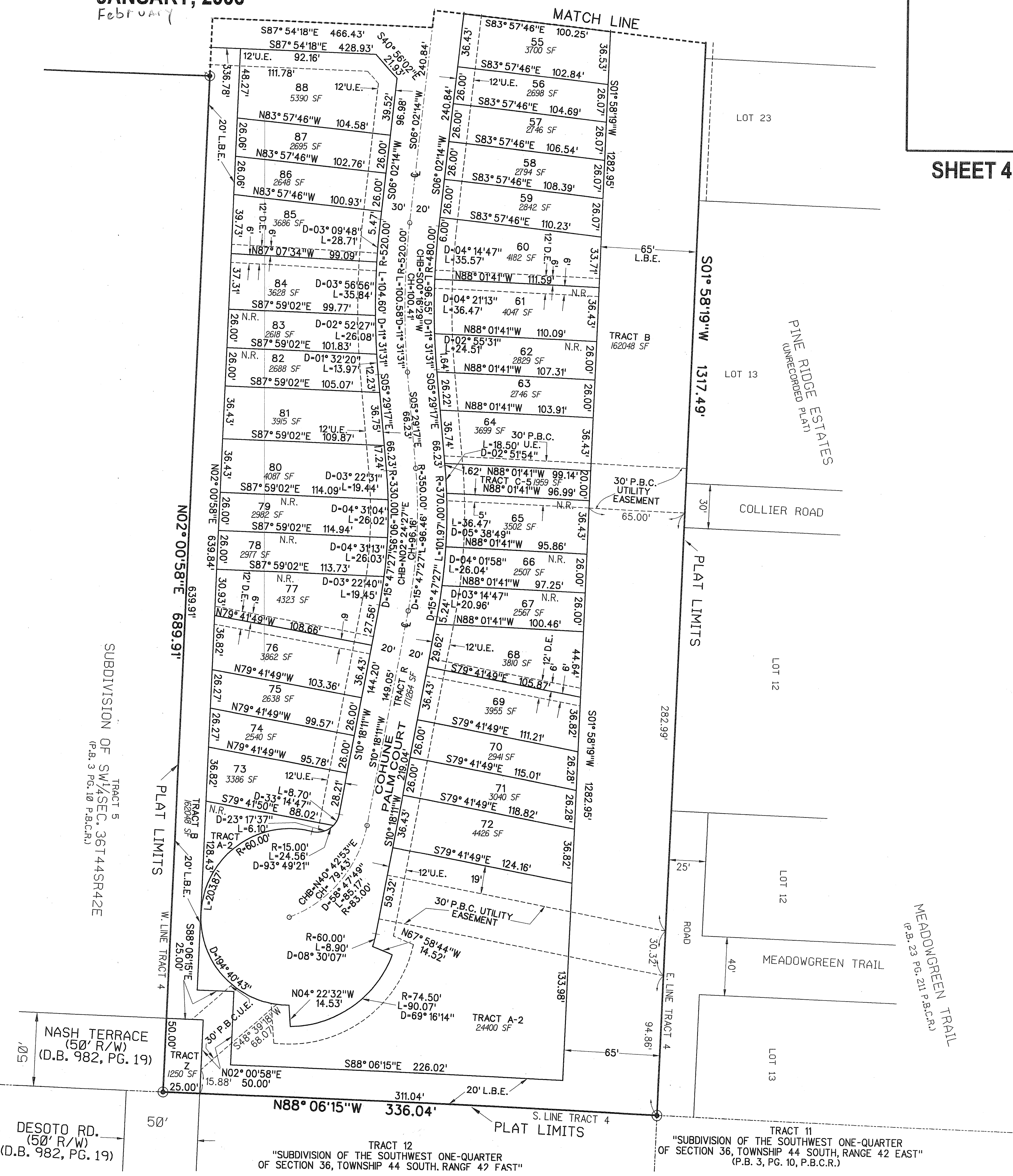
SHEET 4 OF 4



0 40' 80'
GRAPHIC SCALE
1" = 40'

LEGEND:

- ⊙ SET P.R.M. (UNLESS OTHERWISE NOTED)-4" X4" CONC. MON. WITH ALUMINUM DISK STAMPED P.R.M.-LB7264 P.C.P.
 - CENTERLINE
- ABBREVIATIONS:
- CH CHORD BEARING
 - CHB CHORD BEARING
 - CONC. CONCRETE
 - COR. CORNER
 - D DELTA (CENTRAL ANGLE)
 - D.E. DRAINAGE EASEMENT
 - L LENGTH
 - L.B. LICENSED BUSINESS
 - L.E. LANDSCAPE EASEMENT
 - L.M.A.E. LAKE MAINTENANCE EASEMENT
 - L.S. LAKE MAINTENANCE ACCESS EASEMENT
 - L.W.D.D. LAKE WORTH DRAINAGE DISTRICT
 - MON. MONUMENT
 - O.R.B. OFFICIAL RECORDS BOOK
 - N.R. NON-RADIAL
 - P.B. PALM BEACH COUNTY RECORDS
 - P.B.C.R. PALM BEACH COUNTY RECORDS
 - P.G. PAGE
 - P.C.P. PERMANENT CONTROL POINT
 - P.O.B. POINT OF BEGINNING
 - P.O.C. POINT OF COMMENCEMENT
 - P.R.M. PERMANENT REFERENCE MONUMENT
 - P.S.M. PROFESSIONAL SURVEYOR & MAPPER
 - P.U.D. PLANNED UNIT DEVELOPMENT
 - R RADIUS
 - R.E.E. ROOF ENCROACHMENT EASEMENT
 - R/W RIGHT-OF-WAY
 - SEC. SECTION
 - S.F. SQUARE FEET
 - U.E. UTILITY EASEMENT
 - L.S.E. LIFT STATION EASEMENT



NASH TERRACE
(50' R/W)
(D.B. 982, PG. 19)

DESOTO RD.
(50' R/W)
(D.B. 982, PG. 19)

TRACT 13
"SUBDIVISION OF THE
SOUTHWEST ONE-QUARTER
OF SECTION 36, TOWNSHIP
44 SOUTH, RANGE 42 EAST
(P.B. 3, PG. 10, P.B.C.R.)"

TRACT 12
"SUBDIVISION OF THE SOUTHWEST ONE-QUARTER
OF SECTION 36, TOWNSHIP 44 SOUTH, RANGE 42 EAST"

TRACT 11
"SUBDIVISION OF THE SOUTHWEST ONE-QUARTER
OF SECTION 36, TOWNSHIP 44 SOUTH, RANGE 42 EAST"
(P.B. 3, PG. 10, P.B.C.R.)"

PINE RIDGE ESTATES
(UNRECORDED PLAT)

MEADOWGREEN TRAIL
(P.B. 23 PG. 211 P.B.C.R.)