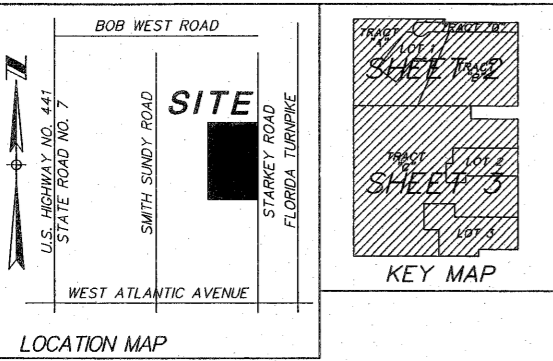
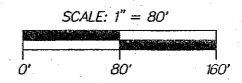


WINDSPIRIT PRESERVE

"PETITION NO. PPD 2004-206 (441 - ATLANTIC P.U.D.)"

BEING A PORTION OF BLOCK 17, PALM BEACH FARMS COMPANY PLAT NO. 1 (PLAT BOOK 2, PAGES 26, 27 & 28) BEING IN SECTION 17, TOWNSHIP 46 SOUTH, RANGE 42 EAST, PALM BEACH COUNTY, FLORIDA.

SHEET 2 OF 3 MARCH 2005

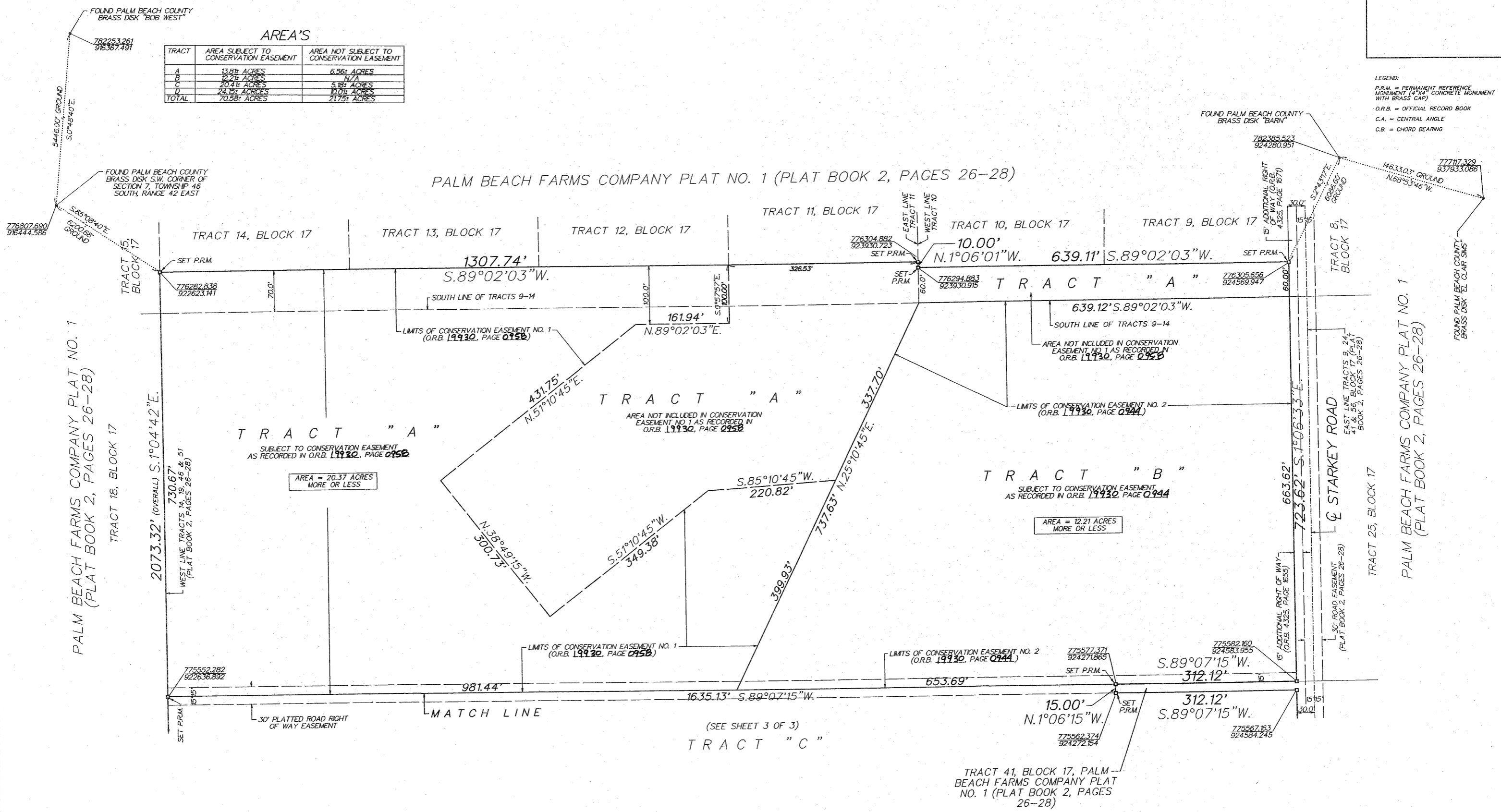


0925-003

AREA'S

TRACT	AREA SUBJECT TO CONSERVATION EASEMENT	AREA NOT SUBJECT TO CONSERVATION EASEMENT
A	13.81 ACRES	6.56 ACRES
B	12.21 ACRES	N/A
C	20.41 ACRES	5.18 ACRES
D	24.12 ACRES	10.01 ACRES
TOTAL	70.55 ACRES	21.75 ACRES

LEGEND:
 P.R.M. = PERMANENT REFERENCE MONUMENT (4" X 4" CONCRETE MONUMENT WITH BRASS CAP)
 O.R.B. = OFFICIAL RECORD BOOK
 C.A. = CENTRAL ANGLE
 C.B. = CHORD BEARING



PLAT BOOK 2, PAGES 26-28
 PALM BEACH FARMS COMPANY
 PLAT NO. 1
 SECTION 17, TOWNSHIP 46 SOUTH,
 RANGE 42 EAST, PALM BEACH
 COUNTY, FLORIDA

TRACT 41, BLOCK 17, PALM BEACH FARMS COMPANY PLAT NO. 1 (PLAT BOOK 2, PAGES 26-28)