

PERIMETER

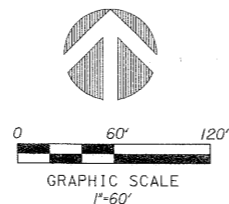
SURVEYING & MAPPING
Certificate of Authorization No. LB7264
Prepared by: Jeff S. Hodapp, P.S.M.
951 Broken Sound Parkway, Suite 320
Boca Raton, Florida 33487
Tel: (561) 241-9988
Fax: (561) 241-5182

NANAK PLAT-PRESERVE AREA 5

PETITION NO. PDD 2004-206 (ASCOT - 441 ATLANTIC P.U.D.)
A PORTION OF TRACTS 42 AND 43, BLOCK 52, "PALM BEACH FARMS COMPANY
PLAT NO. 3" (P.B. 2, PGS. 45-54, P.B.C.R.) IN SECTION 24, TOWNSHIP 45
SOUTH, RANGE 41 EAST, PALM BEACH COUNTY, FLORIDA.
DECEMBER, 2005

ABBREVIATIONS:

CONC.	CONCRETE
COR.	CORNER
D	DELTA (CENTRAL ANGLE)
D.E.	DRAINAGE EASEMENT
F.P.B.L. CO.	FLORIDA POWER AND LIGHT COMPANY
I.P.	IRON PIPE
I.R.C.	IRON ROD AND CAP
L	LENGTH
L.B.	LICENSED BUSINESS
L.E.	LANDSCAPE EASEMENT
L.S.	LICENSED SURVEYOR
L.W.D.D.	LAKE WORTH DRAINAGE DISTRICT
MON.	MONUMENT
O.R.B.	OFFICIAL RECORDS BOOK
N.R.	NON-RADIAL
P.B.	PLAT BOOK
P.B.C.B.D.	PALM BEACH COUNTY BRASS DISK
P.B.C.R.	PALM BEACH COUNTY RECORDS
PG.	PAGE
P.C.P.	PERMANENT CONTROL POINT
P.O.B.	POINT OF BEGINNING
P.O.C.	POINT OF COMMENCEMENT
P.R.M.	PERMANENT REFERENCE MONUMENT
P.S.M.	PROFESSIONAL SURVEYOR & MAPPER
P.U.D.	PLANNED UNIT DEVELOPMENT
R	RADIUS
R/W	RIGHT-OF-WAY
SEC.	SECTION
S.F.	SQUARE FEET
U.E.	UTILITY EASEMENT
LEGEND:	
⊙	SET P.R.M. (UNLESS OTHERWISE NOTED)-4" X4"
○	CONC. MON. WITH ALUMINUM DISK STAMPED P.R.M.*LB7264
⊕	P.C.P.
⊖	CENTERLINE

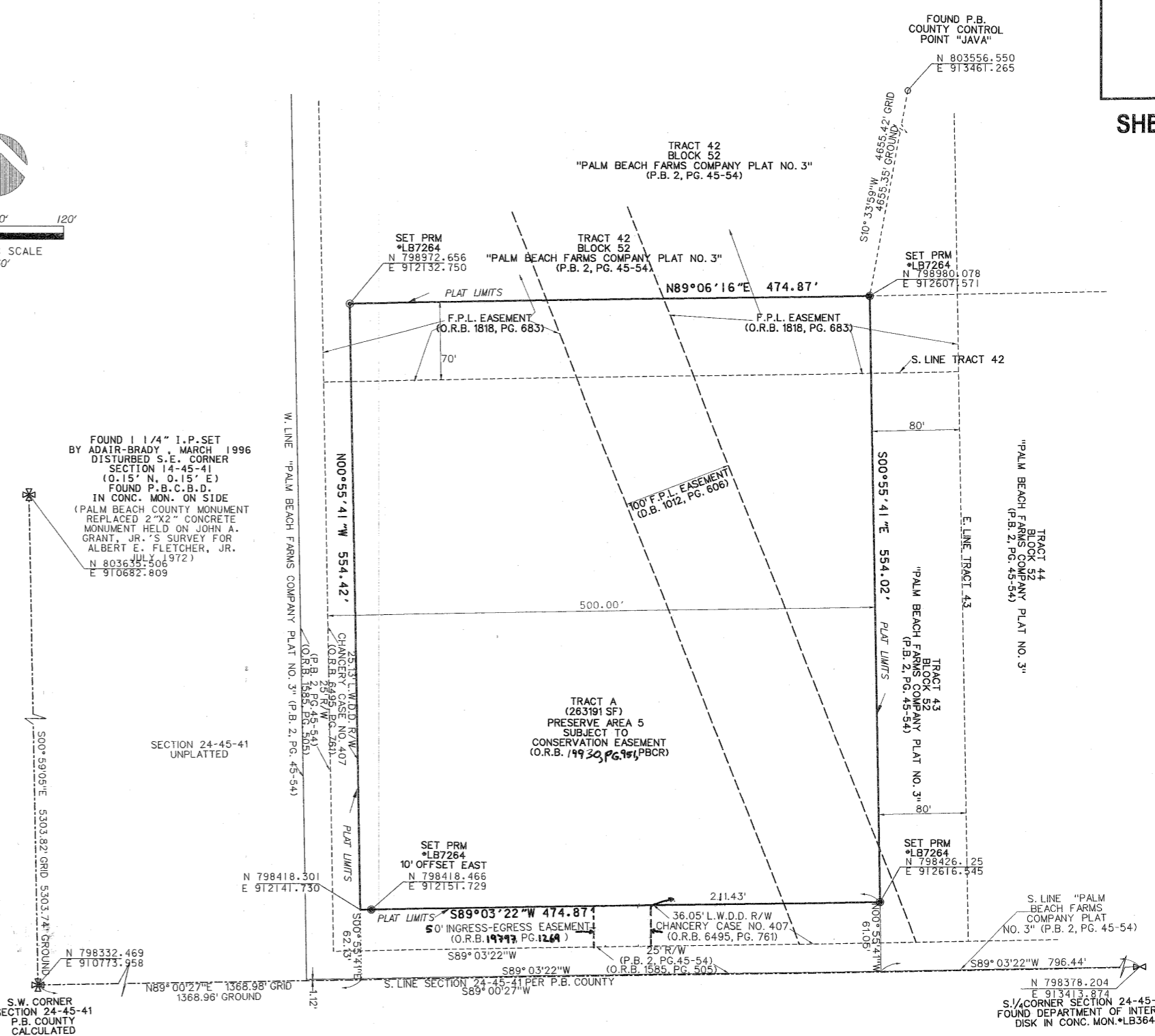


FOUND 1/4" I.P. SET BY ADAIR-BRADY, MARCH 1996 DISTURBED S.E. CORNER SECTION 14-45-41 (0.15' N, 0.15' E) FOUND P.B.C.B.D. IN CONC. MON. ON SIDE (PALM BEACH COUNTY MONUMENT REPLACED 2"X2" CONCRETE MONUMENT HELD ON JOHN A. GRANT, JR.'S SURVEY FOR ALBERT E. FLETCHER, JR. JULY 1972) N 803635.506 972 E 910682.809

SECTION 24-45-41 UNPLATTED

S.W. CORNER SECTION 24-45-41 P.B. COUNTY CALCULATED POSITION

SECTION 25-45-41 UNPLATTED



DATE: 12/15/05
BY: J.S.H.
CHECKED: J.S.H.
SCALE: AS SHOWN
JOB NO: 0925-005