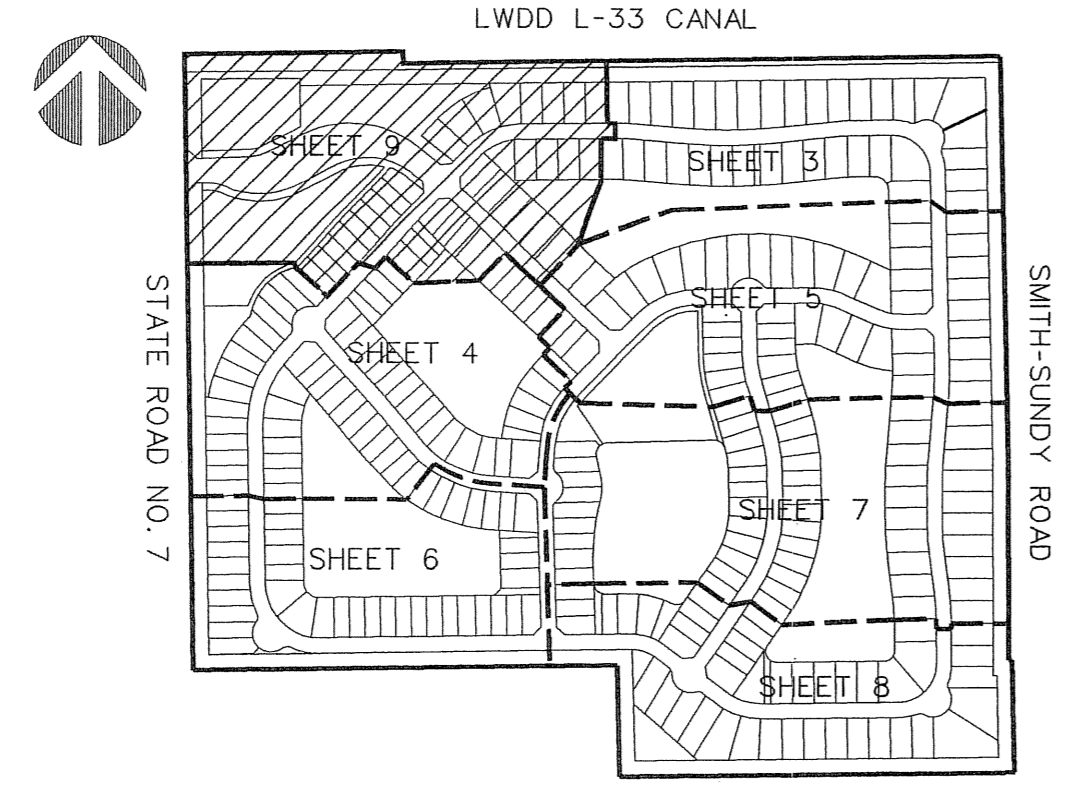


# PERIMETER

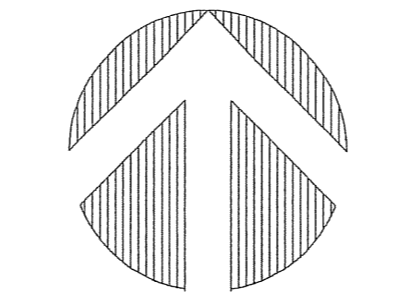
**SURVEYING & MAPPING**  
Certificate of Authorization No. LB7264  
Prepared by: Jeff S. Hodapp, P.S.M.  
951 Broken Sound Parkway, Suite 320  
Boca Raton, Florida 33487  
Tel: (561) 241-9988  
Fax: (561) 241-5182



# TIVOLI ISLES P.U.D.

## 441 - ATLANTIC P.U.D. (CONTROL NO. 04-206)

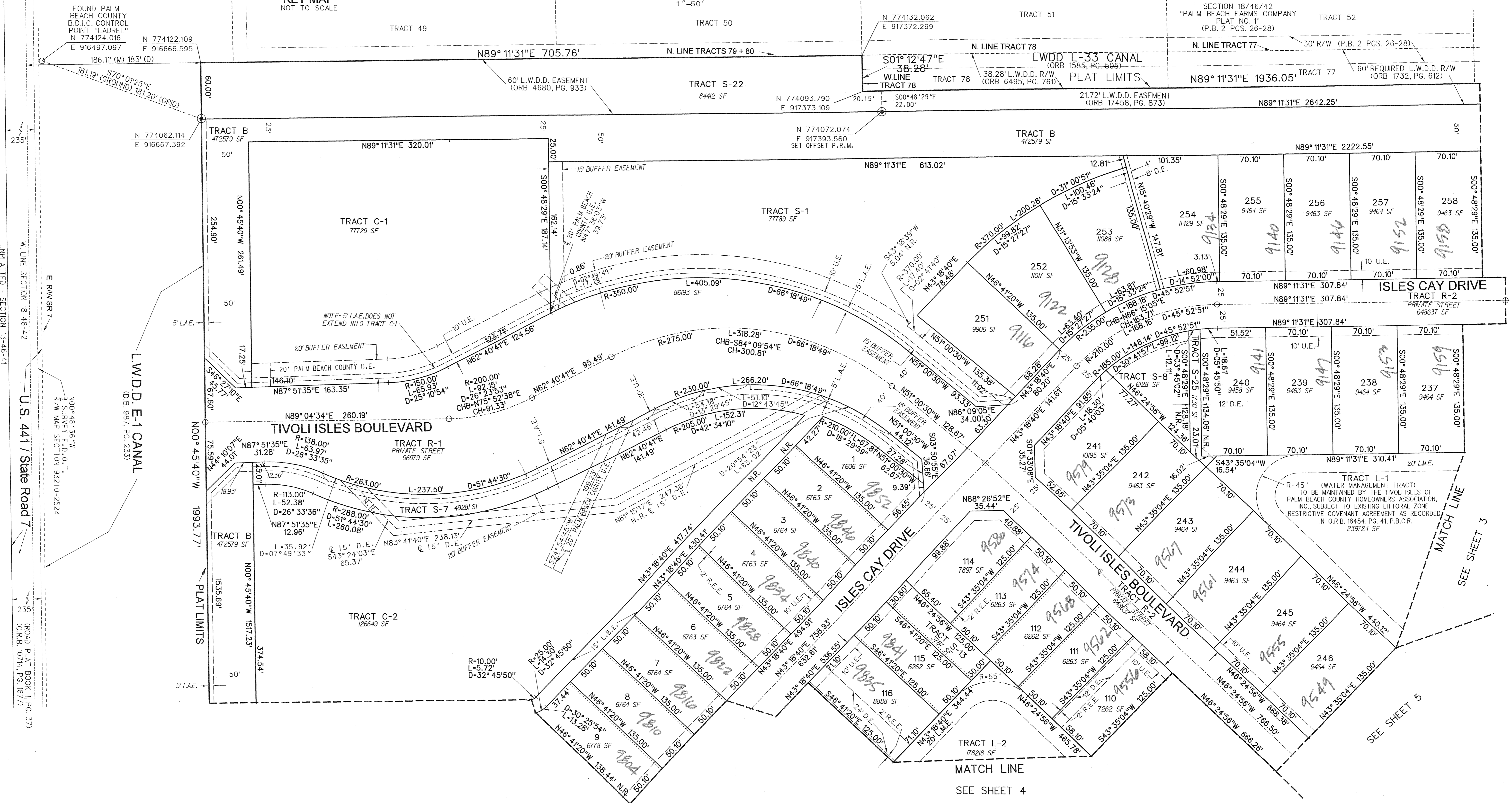
**A REPLAT OF ALL OF TRACTS 79-87, 106-112, AND A PORTION OF TRACTS 73-78, 88, 105, AND 117-120, TOGETHER WITH A PORTION OF THE PLATTED ACREAGE WEST OF SAID TRACTS 80, 81 AND 112, ALL IN SECTION 18, TOWNSHIP 46 SOUTH, RANGE 42 EAST, OF "PALM BEACH FARMS COMPANY PLAT NO. 1" (P.B. 2, PGS. 26-28, P.B.C.R.), PALM BEACH COUNTY, FLORIDA. DECEMBER, 2005**



**LEGEND:**  
● SET P.R.M. (UNLESS OTHERWISE NOTED) - 4" X 4" CONC. MON. WITH ALUMINUM DISK STAMPED P.R.M. • LB7264  
○ CENTERLINE  
⊙ R.O.W. CENTERLINE

**ABBREVIATIONS:**  
CH CHORD BEARING  
CHB CONCRETE CORNER  
COR. DELTA (CENTRAL ANGLE)  
D DRAINAGE EASEMENT  
D.E. ARCLength  
L.B. LICENSED BUSINESS LANDSCAPE EASEMENT  
L.E. LAKE MAINTENANCE EASEMENT  
L.M.E. LAKE MAINTENANCE ACCESS EASEMENT  
L.M.A.E. LICENSED SURVEYOR  
L.S. LAKE WORTH DRAINAGE DISTRICT MONUMENT  
M.O.R.B. OFFICIAL RECORDS BOOK  
N.R. NON-RADIAL PLAT BOOK  
P.B. PALM BEACH COUNTY RECORDS  
P.B.C.R. PAGE  
P.C.P. PERMANENT CONTROL POINT  
P.O.B. POINT OF BEGINNING  
P.O.C. POINT OF COMMENCEMENT  
P.R.M. PERMANENT REFERENCE MONUMENT  
P.S.M. PROFESSIONAL SURVEYOR & MAPPER  
P.U.D. PLANNED UNIT DEVELOPMENT  
R RADIUS  
R.E.E. ROOF ENCROACHMENT EASEMENT  
R/W RIGHT-OF-WAY  
SEC. SECTION  
S.F. SQUARE FEET  
U.E. UTILITY EASEMENT

100



SUBDIVISION Tivoli Isles  
PAGE 100  
BOOK FLOOD MAP # 200A  
FLOOD ZONE B  
ZONING PUD  
QUAD # 51  
SE 15  
TAZ 15B  
PUD NAME

SEE SHEET 3

SEE SHEET 5

MATCH LINE  
SEE SHEET 4