

# CANYON SPRINGS PRESERVE PLAT NO. 2

(A.K.A. MAZZONI PRESERVE/FOGG SOUTH)  
BEING A REPLAT OF A PORTION OF  
TRACTS 2 THROUGH 8, 25, 40 AND 57 THROUGH 63 AND  
ALL OF TRACTS 26 THROUGH 31 AND TRACTS 34 THROUGH 39 AND THAT STRIP OF LAND,  
30 FEET IN WIDTH, LYING BETWEEN SAID TRACTS 25 THROUGH 31 AND TRACTS 34 THROUGH 40,  
ALL LYING WITHIN BLOCK 63, PALM BEACH FARMS CO. PLAT NO. 3, ACCORDING TO THE PLAT  
THEREOF AS RECORDED IN PLAT BOOK 2, PAGE 45 THROUGH 54 OF  
THE PUBLIC RECORDS OF PALM BEACH COUNTY, FLORIDA.  
ALL LYING WITHIN SECTION 5, TOWNSHIP 46 SOUTH, RANGE 42 EAST,  
PALM BEACH COUNTY, FLORIDA

SHEET 2 OF 3

AUGUST, 2005

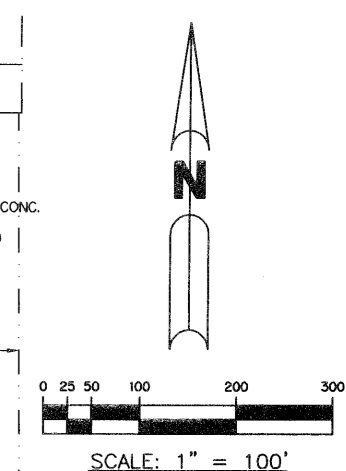
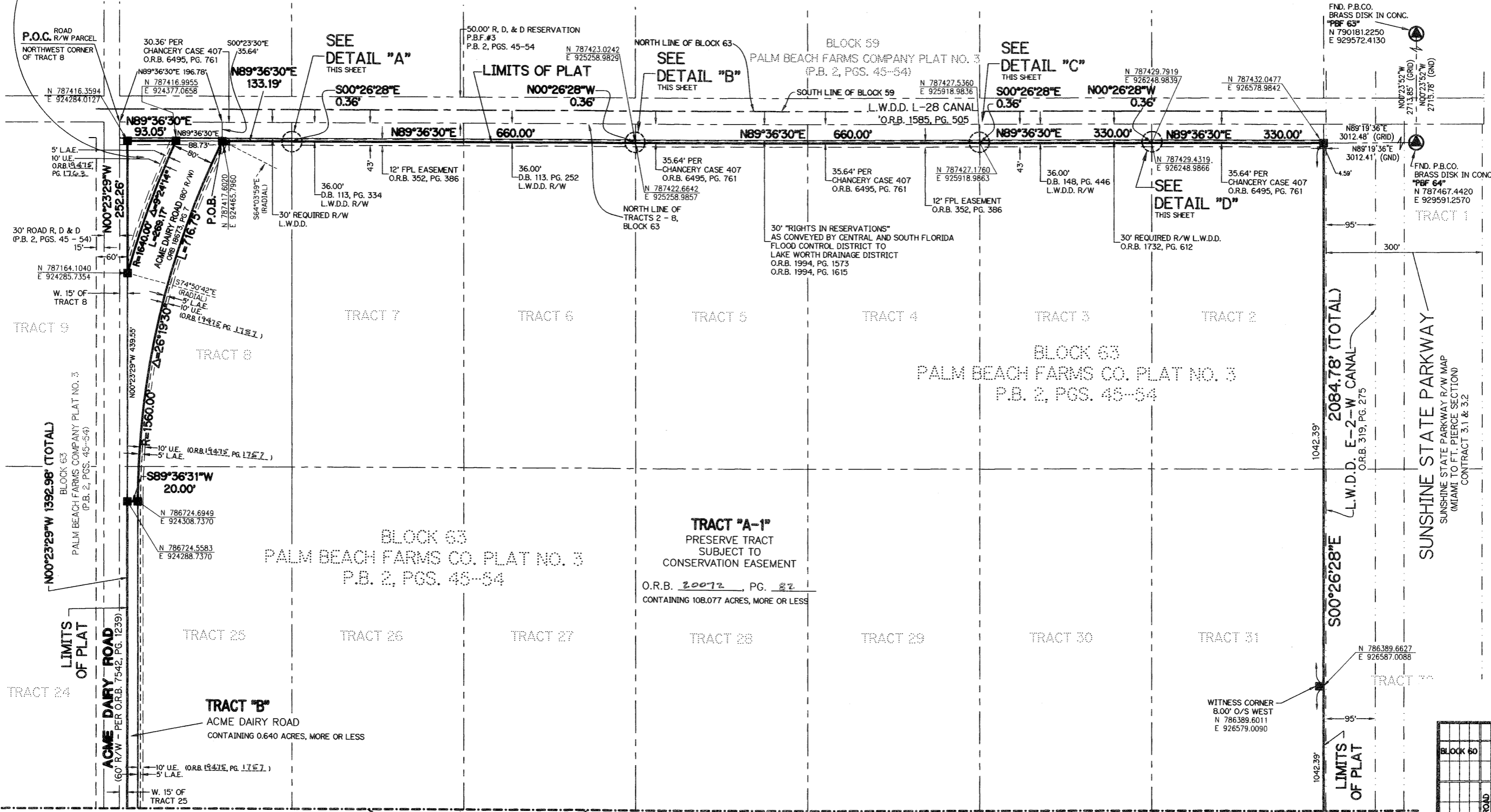
### LEGEND:

- AC - ACRES
- CL - CENTERLINE
- D.B. - DEED BOOK
- D.E. - DRAINAGE EASEMENT
- L.W.D.D. - LAKE WORTH DRAINAGE DISTRICT
- N.T.S. - NOT TO SCALE
- O.R.B. - OFFICIAL RECORD BOOK
- P.B. - PLAT BOOK
- PBF#3 - BLOCK 63, PALM BEACH FARMS CO. PLAT NO. 3, P.B. 2, PGS. 45-54
- PGS. - PAGES
- P.S.M. - PROFESSIONAL SURVEYOR AND MAPPER
- P.O.B. - POINT OF BEGINNING
- P.O.C. - POINT OF COMMENCEMENT
- R, D & D. - ROAD, DYKE AND DITCH RESERVATION BLOCK 63, PALM BEACH FARMS CO. PLAT NO. 3, P.B. 2, PGS. 45-54
- R/W - RIGHT-OF-WAY
- T - TOTAL
- U.E. - UTILITY EASEMENT
- - FND PERMANENT REFERENCE MONUMENT, L.B. #6473
- - SET PERMANENT REFERENCE MONUMENT, L.B. #6674
- - TRACT NUMBER
- N 737648.0171 E 905258.2326 - DENOTES STATE PLANE COORDINATES

106

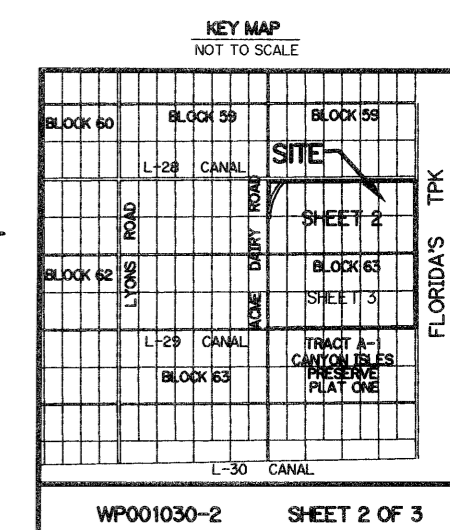
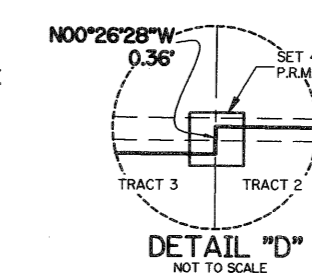
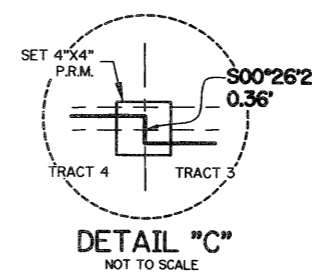
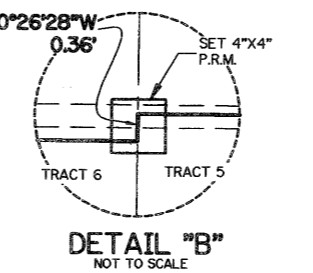
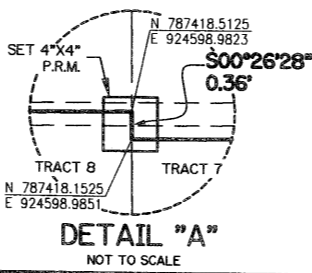
**TRACT "A-2"**  
PRESERVE TRACT  
SUBJECT TO  
CONSERVATION EASEMENT

O.R.B. 20072, PG. 82  
CONTAINING 0.247 ACRES, MORE OR LESS



**NOTE:**  
COORDINATES SHOWN ON THE GEODETIC CONTROL MEET OR EXCEED THE LOCAL ACCURACY REQUIREMENTS OF A 2 CENTIMETER GEODETIC CONTROL SURVEY. COORDINATES SHOWN ARE GRID COORDINATES DATUM = NAD 83 (1990 ADJUSTMENT) ZONE = FLORIDA EAST ZONE  
LINEAR UNIT = U.S. SURVEY FEET  
COORDINATE SYSTEM = 1983 STATE PLANE TRANSVERSE MERCATOR PROJECTION  
ALL DISTANCES ARE GROUND  
SCALE FACTOR = 1.0000243  
PLAT BEARING = GRID BEARING

THIS INSTRUMENT PREPARED BY  
PERRY C. WHITE, P.S.M. 4213, STATE OF FLORIDA  
LAWSON, NOBLE AND WEBB, INC.  
ENGINEERS PLANNERS SURVEYORS  
420 COLUMBIA DRIVE  
WEST PALM BEACH, FLORIDA 33409  
LB-6674



SUBDIVISION: Canyon Springs, Plat #2  
 SHEET: 107  
 PLAT: 106  
 BEARING: NAD 83  
 ZONE: EAST  
 DATE: 8/15/05  
 P.C.: 754  
 P.D.: 754