

0865-002



SCALE: 1" = 100'

CANYON SPRINGS PRESERVE PLAT NO. 2

(A.K.A. MAZZONI PRESERVE/FOGG SOUTH)
BEING A REPLAT OF A PORTION OF
TRACTS 2 THROUGH 8, 25, 40 AND 57 THROUGH 63 AND
ALL OF TRACTS 26 THROUGH 31 AND TRACTS 34 THROUGH 39 AND THAT STRIP OF LAND,
30 FEET IN WIDTH, LYING BETWEEN SAID TRACTS 25 THROUGH 31 AND TRACTS 34 THROUGH 40,
ALL LYING WITHIN BLOCK 63, PALM BEACH FARMS CO. PLAT NO. 3, ACCORDING TO THE PLAT
THEREOF AS RECORDED IN PLAT BOOK 2, PAGE 45 THROUGH 54 OF
THE PUBLIC RECORDS OF PALM BEACH COUNTY, FLORIDA.
ALL LYING WITHIN SECTION 5, TOWNSHIP 46 SOUTH, RANGE 42 EAST,
PALM BEACH COUNTY, FLORIDA

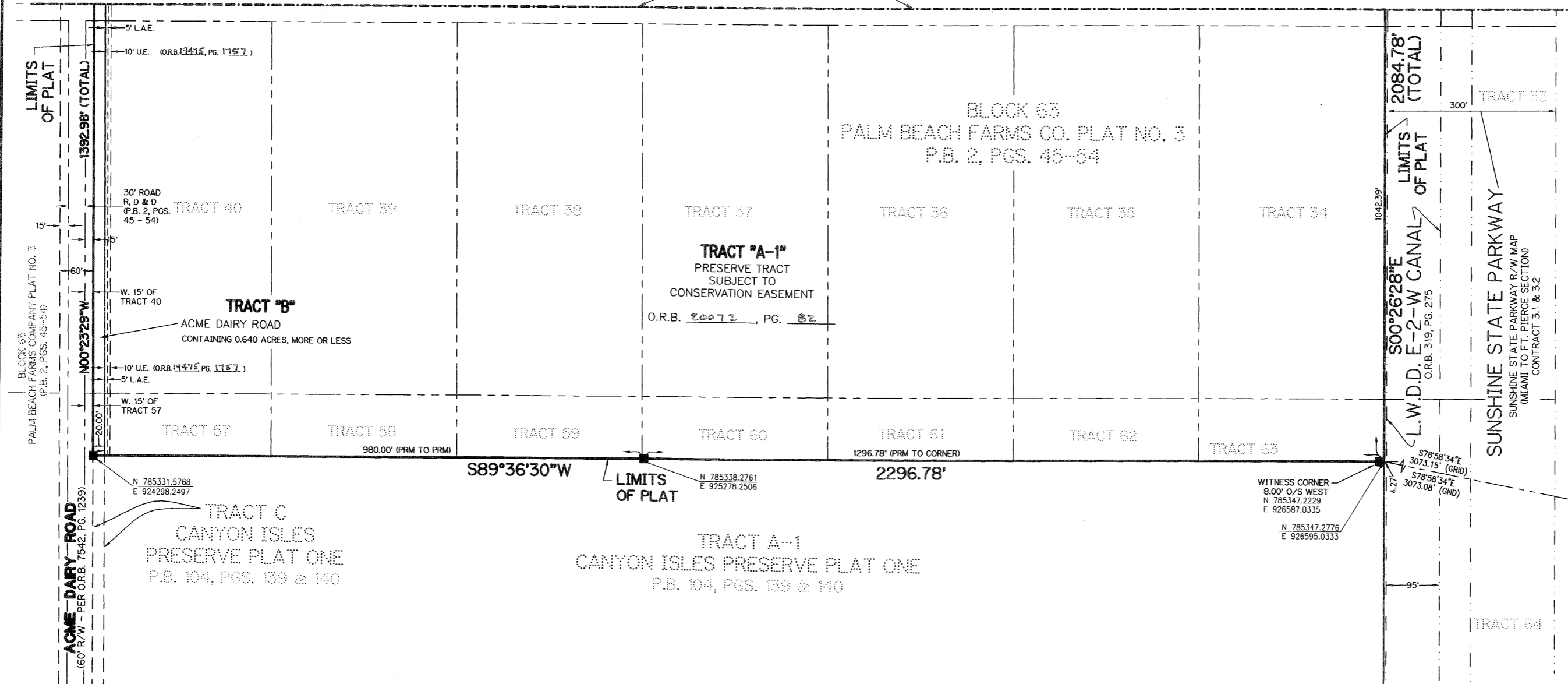
SHEET 3 OF 3

AUGUST, 2005

THIS INSTRUMENT PREPARED BY
PERRY C. WHITE, P.S.M. 4213, STATE OF FLORIDA
LAWSON, NOBLE AND WEBB, INC.
ENGINEERS PLANNERS SURVEYORS
420 COLUMBIA DRIVE
WEST PALM BEACH, FLORIDA 33409
LB-6674

107

MATCH LINE "A"
SEE SHEET 2 OF 3



BLOCK 63
PALM BEACH FARMS COMPANY PLAT NO. 3
(P.B. 2, PGS. 45-54)

ACME DAIRY ROAD
(60' R/W - PER O.R.B. 7542, PG. 1239)

LIMITS OF PLAT
1392.98' (TOTAL)
N00°23'29"W

2084.78' (TOTAL)
LIMITS OF PLAT
S00°26'28"E
L.W.D.D. E-2-W CANAL
O.R.B. 319, PG. 275

SUNSHINE STATE PARKWAY
SUNSHINE STATE PARKWAY R/W MAP
(MIAMI TO FT. PIERCE SECTION)
CONTRACT 3.1 & 3.2

TRACT C
CANYON ISLES
PRESERVE PLAT ONE
P.B. 104, PGS. 139 & 140

TRACT A-1
CANYON ISLES PRESERVE PLAT ONE
P.B. 104, PGS. 139 & 140

TRACT "A-1"
PRESERVE TRACT
SUBJECT TO
CONSERVATION EASEMENT
O.R.B. 20072, PG. 82

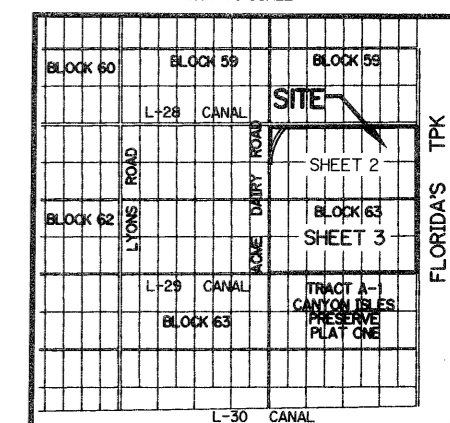
TRACT "B"
ACME DAIRY ROAD
CONTAINING 0.640 ACRES, MORE OR LESS

- LEGEND:**
- AC. - ACRES
 - C - CENTERLINE
 - D.B. - DEED BOOK
 - D.E. - DRAINAGE EASEMENT
 - L.W.D.D. - LAKE WORTH DRAINAGE DISTRICT
 - N.T.S. - NOT TO SCALE
 - O.R.B. - OFFICIAL RECORD BOOK
 - P.B. - PLAT BOOK
 - PBF#3 - BLOCK 63, PALM BEACH FARMS CO. PLAT NO. 3, P.B. 2, PGS. 45-54
 - PGS. - PAGES
 - P.S.M. - PROFESSIONAL SURVEYOR AND MAPPER
 - P.O.B. - POINT OF BEGINNING
 - P.O.C. - POINT OF COMMENCEMENT
 - R, D & D. - ROAD, DYKE AND DITCH RESERVATION BLOCK 63, PALM BEACH FARMS CO. PLAT NO. 3, P.B. 2, PGS. 45-54
 - R/W - RIGHT-OF-WAY
 - T - TOTAL
 - U.E. - UTILITY EASEMENT
 - - FND PERMANENT REFERENCE MONUMENT, L.B. #6473
 - - SET PERMANENT REFERENCE MONUMENT, L.B. #6674
 - (00) - TRACT NUMBER

NOTE:
COORDINATES SHOWN ON THE GEODETIC CONTROL MEET OR EXCEED THE LOCAL ACCURACY REQUIREMENTS OF A 2 CENTIMETER GEODETIC CONTROL SURVEY. COORDINATES SHOWN ARE GRID COORDINATES DATUM = NAD 83 (1990 ADJUSTMENT) ZONE = FLORIDA EAST ZONE LINEAR UNIT = U.S. SURVEY FEET COORDINATE SYSTEM = 1983 STATE PLANE TRANSVERSE MERCATOR PROJECTION ALL DISTANCES ARE GROUND SCALE FACTOR = 1.0000243 PLAT BEARING = GRID BEARING

WITNESS CORNER
8.00' O/S WEST
N 785347.2229
E 926587.0335

KEY MAP
NOT TO SCALE



REVISION
BOOK 107
PAGE 107
BLOCK 63
SHEET 3
DATE 7/5/05
BY P.C.W.