

# (A.K.A. BRUSHI PRESERVE, FOGG SOUTH) CANYON SPRINGS PRESERVE PLAT NO. 3

BEING A REPLAT OF A PORTION OF TRACT 1, AND THE EAST 167.09 FEET OF TRACT 2,  
BLOCK 52, PALM BEACH FARMS CO. PLAT NO. 3, ACCORDING TO THE PLAT THEREOF ON  
FILE IN THE OFFICE OF THE CLERK OF THE CIRCUIT COURT IN AND FOR PALM BEACH COUNTY, FLORIDA,  
RECORDED IN PLAT BOOK 2, PAGE 45, SAID LAND LYING, SITUATE AND BEING IN  
SECTION 24, TOWNSHIP 45 SOUTH, RANGE 41 EAST,  
PALM BEACH COUNTY, FLORIDA

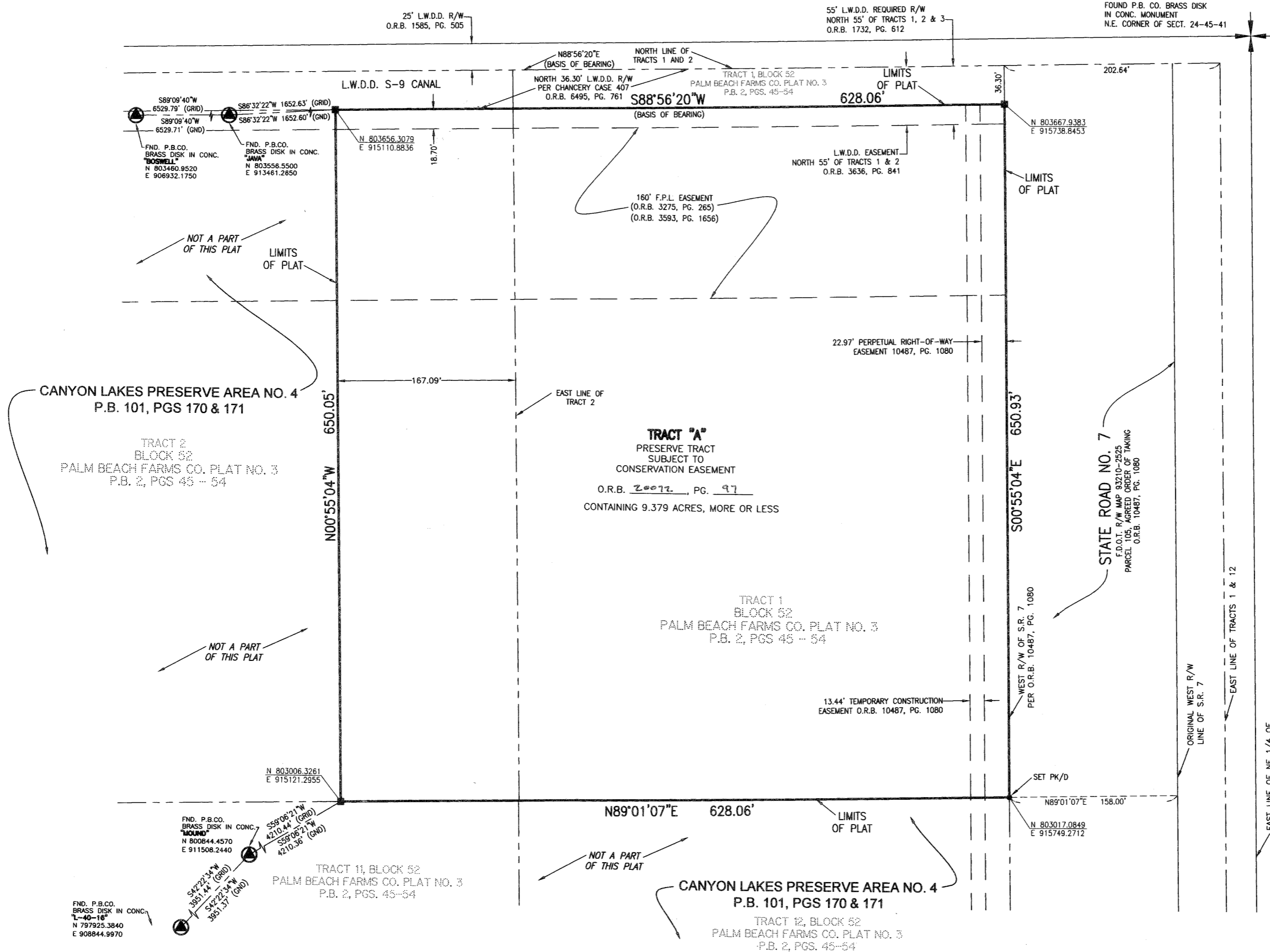
SHEET 2 OF 2

AUGUST, 2005

THIS INSTRUMENT PREPARED BY  
PERRY C. WHITE, P.S.M. 4213, STATE OF FLORIDA  
LAWSON, NOBLE AND WEBB, INC.  
ENGINEERS PLANNERS SURVEYORS  
420 COLUMBIA DRIVE  
WEST PALM BEACH, FLORIDA 33409  
LB-6674



SCALE: 1" = 50'



### LEGEND:

- - FND CONCRETE MONUMENT
- - SET PERMANENT REFERENCE MONUMENT, L.B. #6674
- - PERMANENT CONTROL POINT, L.B. #6674
- - CENTERLINE
- D.B. - DEED BOOK
- L.W.D.D. - LAKE WORTH DRAINAGE DISTRICT
- N.T.S. - NOT TO SCALE
- O.R.B. - OFFICIAL RECORD BOOK
- P.B. - PLAT BOOK
- PGS. - PAGES
- P.S.M. - PROFESSIONAL SURVEYOR AND MAPPER
- N 737648.0171 E 905258.2326 - DENOTES STATE PLANE COORDINATES
- GND - GROUND
- R/W - RIGHT-OF-WAY

### NOTE:

COORDINATES SHOWN ON THE GEODETIC CONTROL MEET OR EXCEED THE LOCAL ACCURACY REQUIREMENTS OF A 2 CENTIMETER GEODETIC CONTROL SURVEY. COORDINATES SHOWN ARE GRID COORDINATES DATUM = NAD 83 (1990 ADJUSTMENT) ZONE = FLORIDA EAST ZONE. LINEAR UNIT = U.S. SURVEY FEET. COORDINATE SYSTEM = 1983 STATE PLANE TRANSVERSE MERCATOR PROJECTION ALL DISTANCES ARE GROUND SCALE FACTOR = 1.0000184 PLAT BEARING = GRID BEARING

SUPERVISOR  
 BLOCK 107  
 RECORD BOOK  
 QUANT 45  
 52  
 TAD 742  
 FURNAME