

# GULF STREAM VILLAS

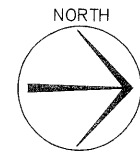
SHEET 2 OF 2 SHEETS

STATE OF FLORIDA  
COUNTY OF PALM BEACH

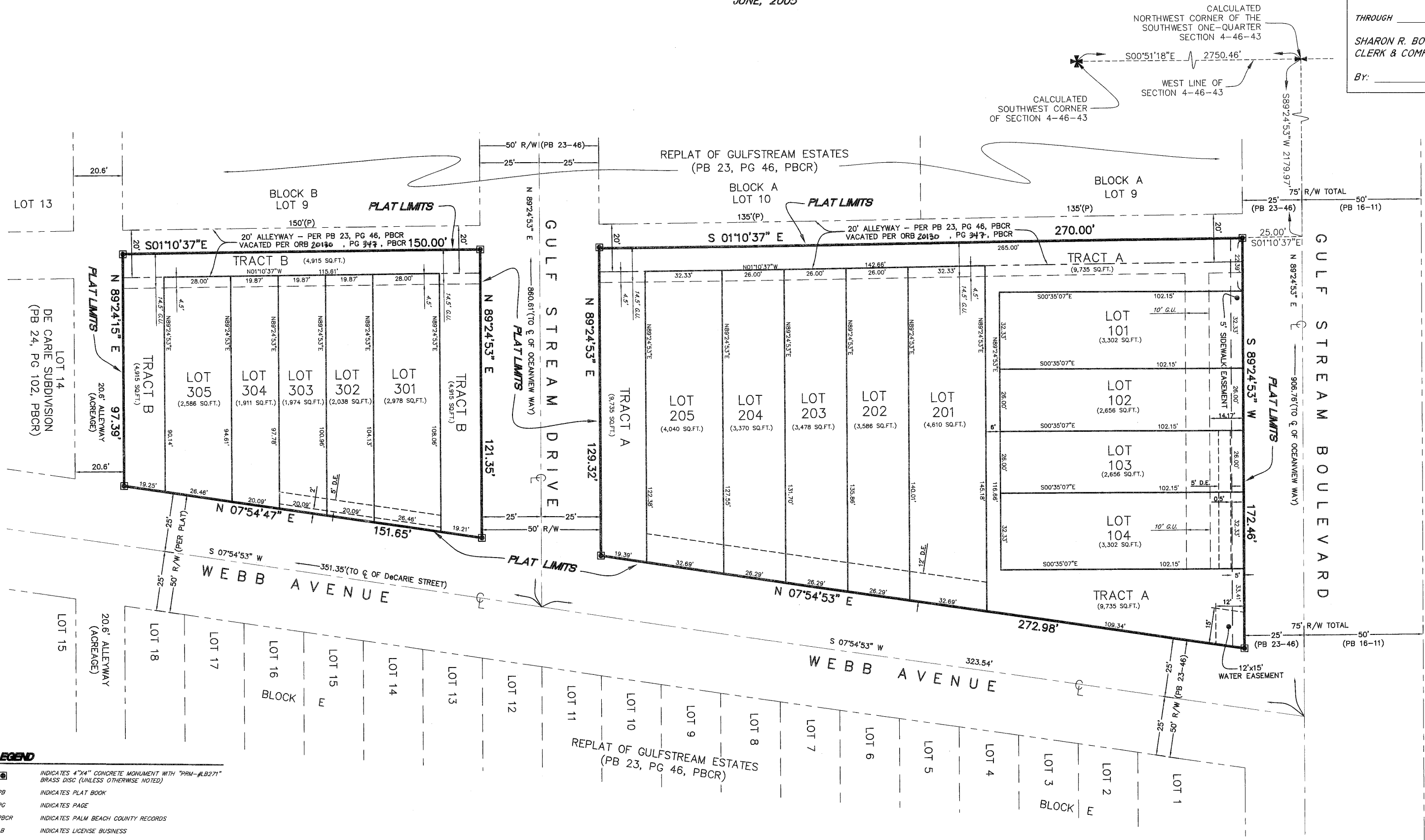
118

A REPLAT OF PORTIONS OF "REPLAT OF BLOCKS 2-5 INCL.,  
GULF STREAM ESTATES", PLAT BOOK 23, PAGE 46,  
PALM BEACH COUNTY RECORDS  
SECTION 4, TOWNSHIP 46 SOUTH, RANGE 43 EAST  
CITY OF DELRAY BEACH, PALM BEACH COUNTY, FLORIDA  
JUNE, 2005

THIS PLAT WAS FILED FOR RECORD AT \_\_\_\_\_ THIS \_\_\_\_\_  
DAY OF \_\_\_\_\_, 20\_\_\_\_  
AND DULY RECORDED IN \_\_\_\_\_  
PLAT BOOK \_\_\_\_\_, PAGES \_\_\_\_\_  
THROUGH \_\_\_\_\_  
SHARON R. BOCK  
CLERK & COMPTROLLER  
BY: \_\_\_\_\_ D.C.



SCALE 1" = 20'  
0 20 40  
SCALE IN FEET



- LEGEND**
- INDICATES 4"x4" CONCRETE MONUMENT WITH "PRM-#LB271" BRASS DISC (UNLESS OTHERWISE NOTED)
  - PB INDICATES PLAT BOOK
  - PG INDICATES PAGE
  - PBCR INDICATES PALM BEACH COUNTY RECORDS
  - LB INDICATES LICENSE BUSINESS
  - ⊕ INDICATES CENTERLINE
  - (P) INDICATES PLATTED DIMENSION
  - R/W INDICATES RIGHT OF WAY
  - G.U. INDICATES GENERAL UTILITY EASEMENT (PUBLIC AND/OR PRIVATE USE)
  - SQ.FT. INDICATES SQUARE FOOT
  - (PER PLAT) RECORDED IN PLAT BOOK 23, PAGE 46, PBCR, UNLESS OTHERWISE NOTED

**Craven-Thompson & Associates, Inc.**  
ENGINEERS • PLANNERS • SURVEYORS  
5114 OKEECHOBEE BOULEVARD, SUITE 112, WEST PALM BEACH, FLORIDA 33417  
TEL: (561) 688-5010 FAX: (561) 688-1037  
3563 N.W. 53RD STREET FORT LAUDERDALE, FLORIDA 33309  
TEL: (954) 739-6400 FAX: (954) 739-6409  
FLORIDA LICENSED ENGINEERING, SURVEYING & MAPPING BUSINESS No. 271  
FLORIDA LICENSED LANDSCAPE ARCHITECTURE BUSINESS No. C000114  
05-0076