

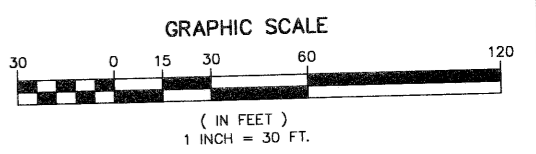
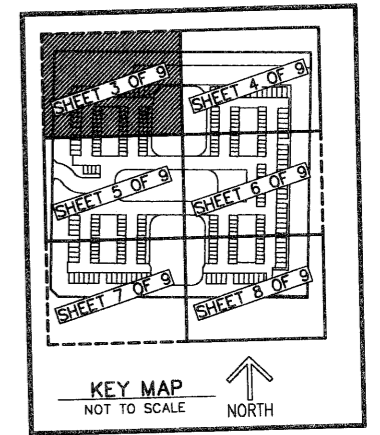
THIS INSTRUMENT PREPARED BY  
DAVID P. LINDLEY  
OF  
CAULFIELD and WHEELER, INC.  
SURVEYORS - ENGINEERS - PLANNERS  
7301-A WEST PALMETTO PARK ROAD, SUITE 100A  
BOCA RATON, FLORIDA 33433 - (561)392-1991  
AUGUST - 2005

# SOUTHAMPTON 2

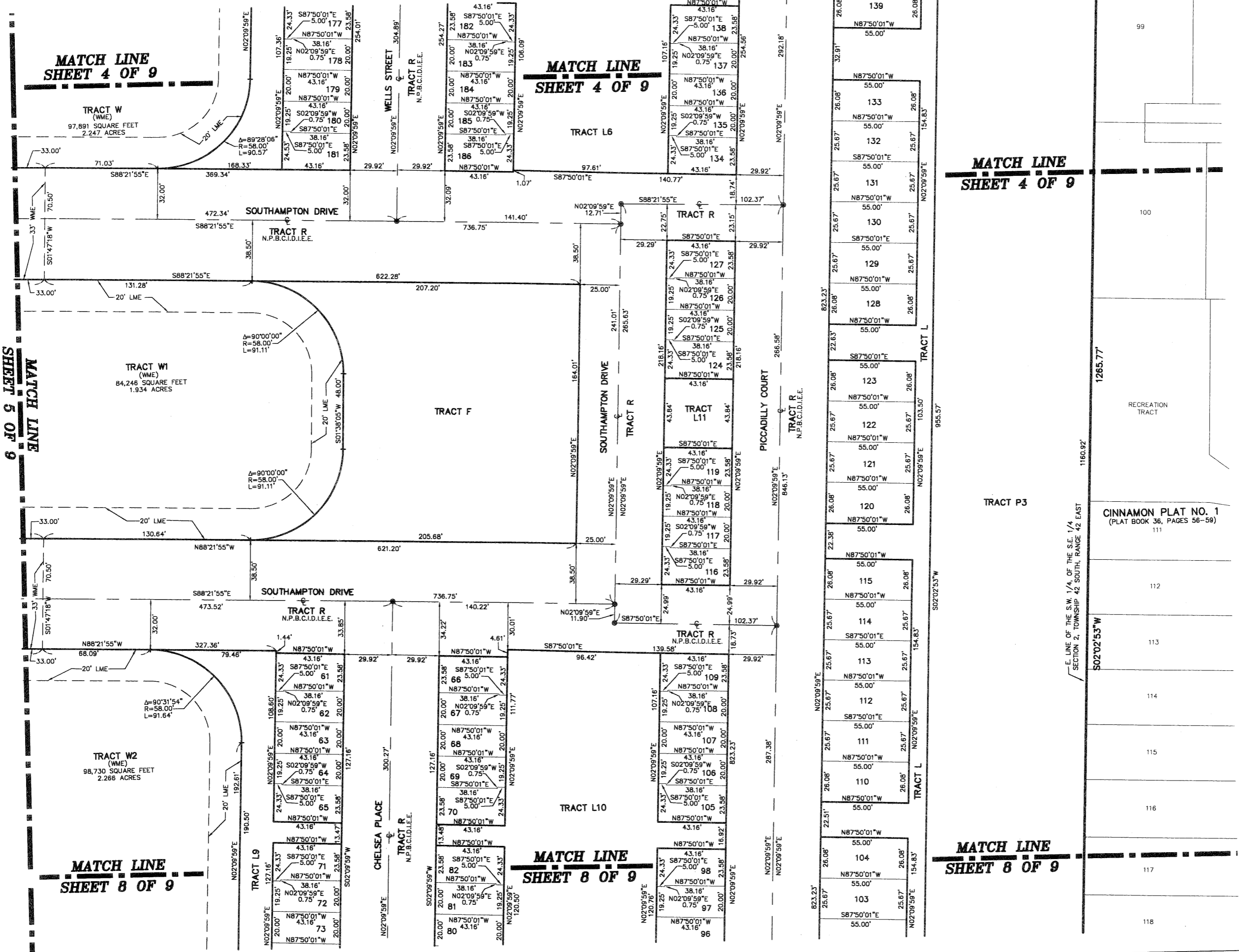
A PLANNED UNIT DEVELOPMENT  
BEING A PORTION OF SECTION 2, TOWNSHIP 42 SOUTH, RANGE 42 EAST,  
CITY OF PALM BEACH GARDENS, PALM BEACH COUNTY, FLORIDA

STATE OF FLORIDA  
COUNTY OF PALM BEACH  
THIS PLAT WAS FILED FOR  
RECORD AT \_\_\_\_\_ M.  
THIS \_\_\_\_\_ DAY OF \_\_\_\_\_  
A.D. 2006 AND DULY RECORDED  
IN PLAT BOOK \_\_\_\_\_ ON  
PAGES \_\_\_\_\_ AND \_\_\_\_\_  
BY: SHARON R. BOCK  
CLERK AND COMPTROLLER  
DEPUTY CLERK

SHEET 6 OF 9



- SURVEY NOTES:**
- IN THOSE CASES WHERE EASEMENTS OF DIFFERENT TYPES CROSS OR OTHERWISE COINCIDE, DRAINAGE EASEMENTS SHALL HAVE FIRST PRIORITY, UTILITY EASEMENTS SHALL HAVE SECOND PRIORITY, ACCESS EASEMENTS SHALL HAVE THIRD PRIORITY, AND ALL OTHER EASEMENTS SHALL BE SUBORDINATE TO THESE WITH THEIR PRIORITIES BEING DETERMINED BY USE RIGHTS GRANTED.
  - BUILDING SETBACK LINES SHALL BE AS REQUIRED BY CURRENT PALM BEACH COUNTY ZONING REGULATIONS.
  - NO BUILDINGS OR ANY KIND OF CONSTRUCTION OR TREES OR SHRUBS SHALL BE PLACED ON AN EASEMENT WITHOUT PRIOR WRITTEN CONSENT OF ALL EASEMENT BENEFICIARIES AND ALL APPLICABLE COUNTY APPROVALS OR PERMITS AS REQUIRED FOR SUCH ENCROACHMENTS.
  - APPROVAL OF LANDSCAPING ON UTILITY EASEMENT, (EXCLUDING WATER AND SEWER) SHALL ONLY BE WITH APPROVAL OF ALL UTILITIES OCCUPYING SAID EASEMENT.
  - BEARINGS ARE RELATIVE TO A BEARING OF S88°21'55"E ALONG THE N. LINE OF THE S.W. 1/4, OF THE S.E. 1/4 OF SECTION 2, TOWNSHIP 42 SOUTH, RANGE 42 EAST
  - P.R.M. - INDICATES 4" x 4" x 24" PERMANENT REFERENCE MONUMENT MARKED LB 3591
  - ⊙ - DENOTES SET PERMANENT CONTROL POINT LB#3591
  - ⊙ - INDICATES UTILITY EASEMENT.
  - DE - INDICATES DRAINAGE EASEMENT.
  - LAE - DENOTES LIMITED ACCESS EASEMENT
  - O.R.B. - DENOTES OFFICIAL RECORDS BOOK
  - ⊖ - DENOTES CENTERLINE
  - (R) - INDICATES RADIAL LINE.
  - LINE INTERSECTING CURVES ARE NON-RADIAL UNLESS SHOWN OTHERWISE.
  - WME - DENOTES WATER MANAGEMENT EASEMENT
  - LME - DENOTES LAKE MAINTENANCE EASEMENT
  - C - DENOTES CHORD LENGTH
  - CB - DENOTES CHORD BEARING
  - WSE - DENOTES WATER AND SEWER EASEMENT
  - PAE - DENOTES PEDESTRIAN ACCESS EASEMENT
  - "NOTICE" THIS PLAT, AS RECORDED IN ITS GRAPHIC FORM, IS THE OFFICIAL DEPICTION OF THE SUBDIVIDED LANDS DESCRIBED HEREIN AND WILL IN NO CIRCUMSTANCES BE SUPPLANTED IN AUTHORITY BY ANY OTHER GRAPHIC OR DIGITAL FORM OF THE PLAT. THERE MAY BE ADDITIONAL RESTRICTIONS THAT ARE NOT RECORDED ON THIS PLAT THAT MAY BE FOUND IN THE PUBLIC RECORDS OF PALM BEACH COUNTY.



MATCH LINE  
SHEET 4 OF 9

MATCH LINE  
SHEET 4 OF 9

MATCH LINE  
SHEET 4 OF 9

MATCH LINE  
SHEET 5 OF 9

MATCH LINE  
SHEET 8 OF 9

MATCH LINE  
SHEET 8 OF 9