

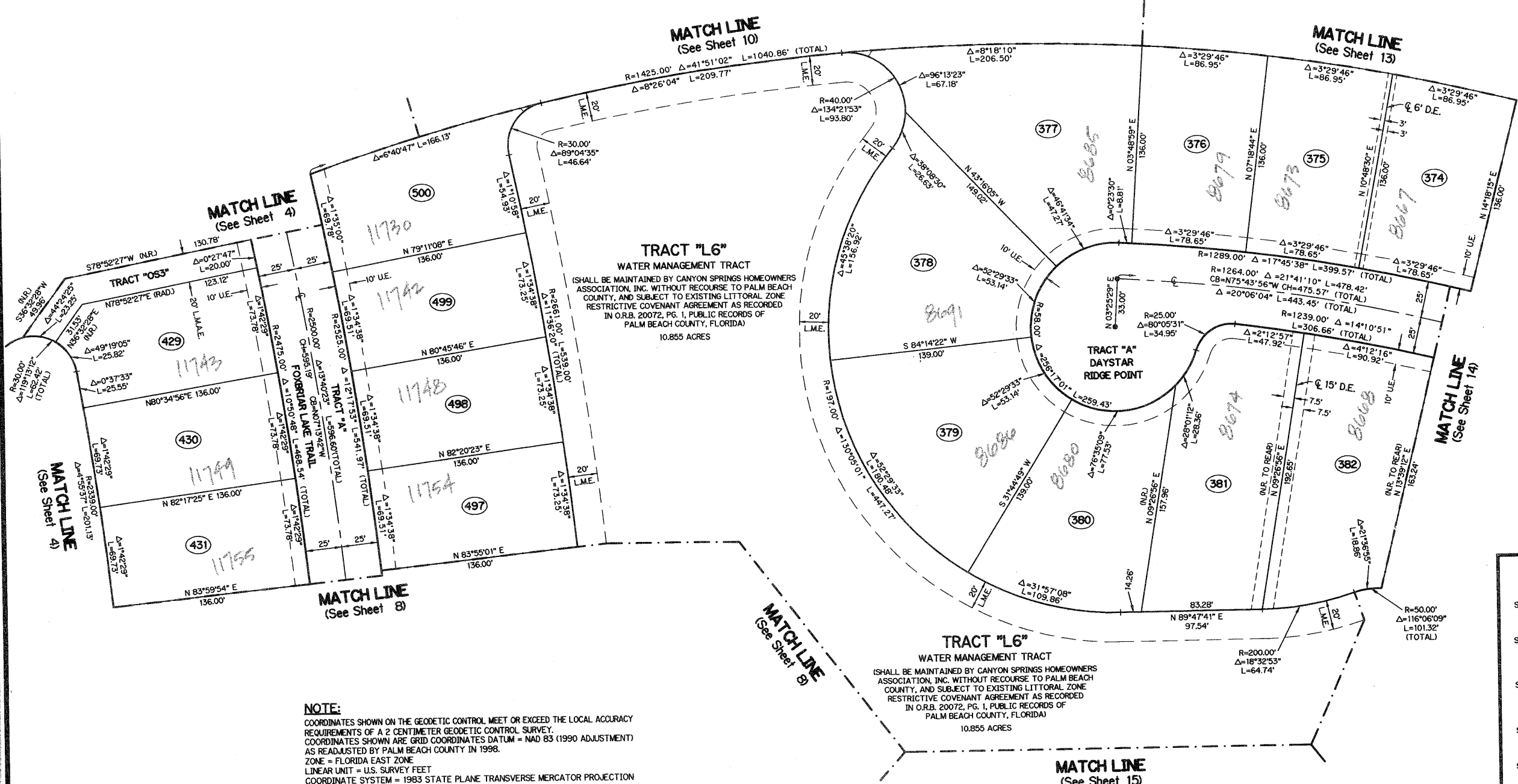
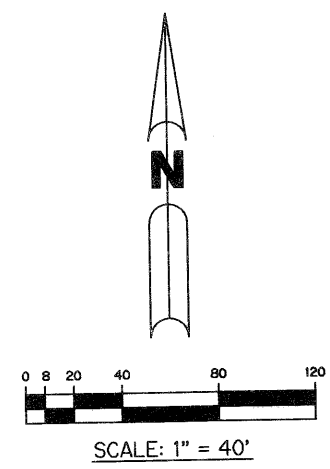
CANYON SPRINGS (A.K.A. FOGG SOUTH) PLANNED UNIT DEVELOPMENT

# CANYON SPRINGS

BEING A PORTION OF TRACTS 69 THROUGH 92 AND TRACTS 101 THROUGH 123, BLOCK 59, AND THAT STRIP OF LAND, 30 FEET IN WIDTH, LYING BETWEEN SAID TRACTS 81 THROUGH 92 AND TRACTS 101 THROUGH 112, AND THAT STRIP OF LAND, 30 FEET IN WIDTH, LYING BETWEEN THE WEST LINE OF SAID TRACTS 72, 89, 104, 121 AND THE EAST LINE OF SAID TRACTS 73, 88, 105, AND 120, PALM BEACH FARMS COMPANY PLAT NO. 3 ACCORDING TO THE PLAT THEREOF RECORDED IN PLAT BOOK 2, PAGE 45 THROUGH 54 OF THE PUBLIC RECORDS OF PALM BEACH COUNTY, FLORIDA, LYING IN SECTION 32, TOWNSHIP 45 SOUTH, RANGE 42 EAST, PALM BEACH COUNTY, FLORIDA

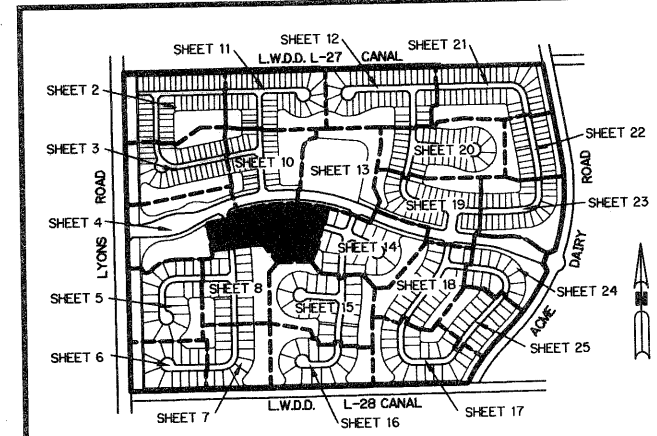
THIS INSTRUMENT PREPARED BY  
PERRY C. WHITE, P.S.M. 4213, STATE OF FLORIDA  
LAWSON, NOBLE AND WEBB, INC.  
ENGINEERS PLANNERS SURVEYORS  
420 COLUMBIA DRIVE  
WEST PALM BEACH, FLORIDA 33409  
LB-6674

SHEET 9 OF 25 MARCH, 2006



- LEGEND:**
- - SET PERMANENT REFERENCE MONUMENT, L.B. #6674
  - - FOUND PERMANENT REFERENCE MONUMENT, L.B. #6674
  - - SET PERMANENT CONTROL POINT, L.B. #6674
  - - FOUND PERMANENT CONTROL POINT, L.B. #6674
  - Δ - DELTA ANGLE
  - B.E. - BUFFER EASEMENT
  - CB - CHORD BEARING
  - CH - CHORD DISTANCE
  - C - CENTERLINE
  - D.B. - DEED BOOK
  - D.E. - DRAINAGE EASEMENT
  - GND. - GROUND
  - L - ARC LENGTH
  - L.A.E. - LIMITED ACCESS EASEMENT
  - L.M.A.E. - LAKE MAINTENANCE ACCESS EASEMENT
  - L.M.E. - LAKE MAINTENANCE EASEMENT
  - L.W.D.D. - LAKE WORTH DRAINAGE DISTRICT
  - N.R. - NOT RADIAL
  - N.T.S. - NOT TO SCALE
  - O.R.B. - OFFICIAL RECORD BOOK
  - P.B. - PLAT BOOK
  - P.C. - POINT OF CURVATURE
  - P.C.P. - PERMANENT CONTROL POINT
  - PGS. - PAGES
  - P.O.B. - POINT OF BEGINNING
  - P.O.C. - POINT OF COMMENCEMENT
  - P.S.M. - PROFESSIONAL SURVEYOR AND MAPPER
  - P.T. - POINT OF TANGENCY
  - R - RADIUS
  - RAD. - RADIAL
  - R/W - RIGHT-OF-WAY
  - TYP. - TYPICAL
  - U.E. - UTILITY EASEMENT
  - N 1000000.0000 - DENOTES STATE PLANE COORDINATES
  - E 1000000.0000

**NOTE:**  
COORDINATES SHOWN ON THE GEODETIC CONTROL MEET OR EXCEED THE LOCAL ACCURACY REQUIREMENTS OF A 2 CENTIMETER GEODETIC CONTROL SURVEY.  
COORDINATES SHOWN ARE GRID COORDINATES DATUM = NAD 83 (1990 ADJUSTMENT) AS READJUSTED BY PALM BEACH COUNTY IN 1998.  
ZONE = FLORIDA EAST ZONE  
LINEAR UNIT = U.S. SURVEY FEET  
COORDINATE SYSTEM = 1983 STATE PLANE TRANSVERSE MERCATOR PROJECTION  
ALL DISTANCES ARE GROUND  
SCALE FACTOR = 1.0000227  
PLAT BEARING = GRID BEARING



KEY MAP  
N.T.S.

CANYON SPRINGS  
 501 N. 107  
 WEST PALM BEACH, FL 33411  
 P. 561-7520  
 F. 561-7521  
 WWW.LAWSONNOBLEWEBB.COM