

HIDDEN SPRINGS

184

BEING A REPLAT OF A PORTION OF TRACT 4 OF THE RESUBDIVISION OF TRACTS 47-50 AND THE NORTH 18' OF TRACTS 57 & 58 (P.B. 21, PG. 77)

Situate in Section 19, Township 44 South, Range 43 East
Palm Beach County, Florida.

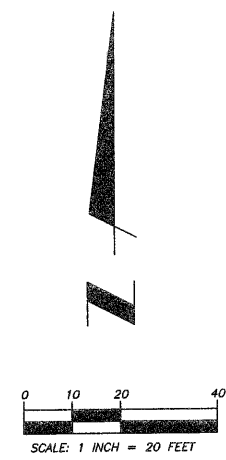
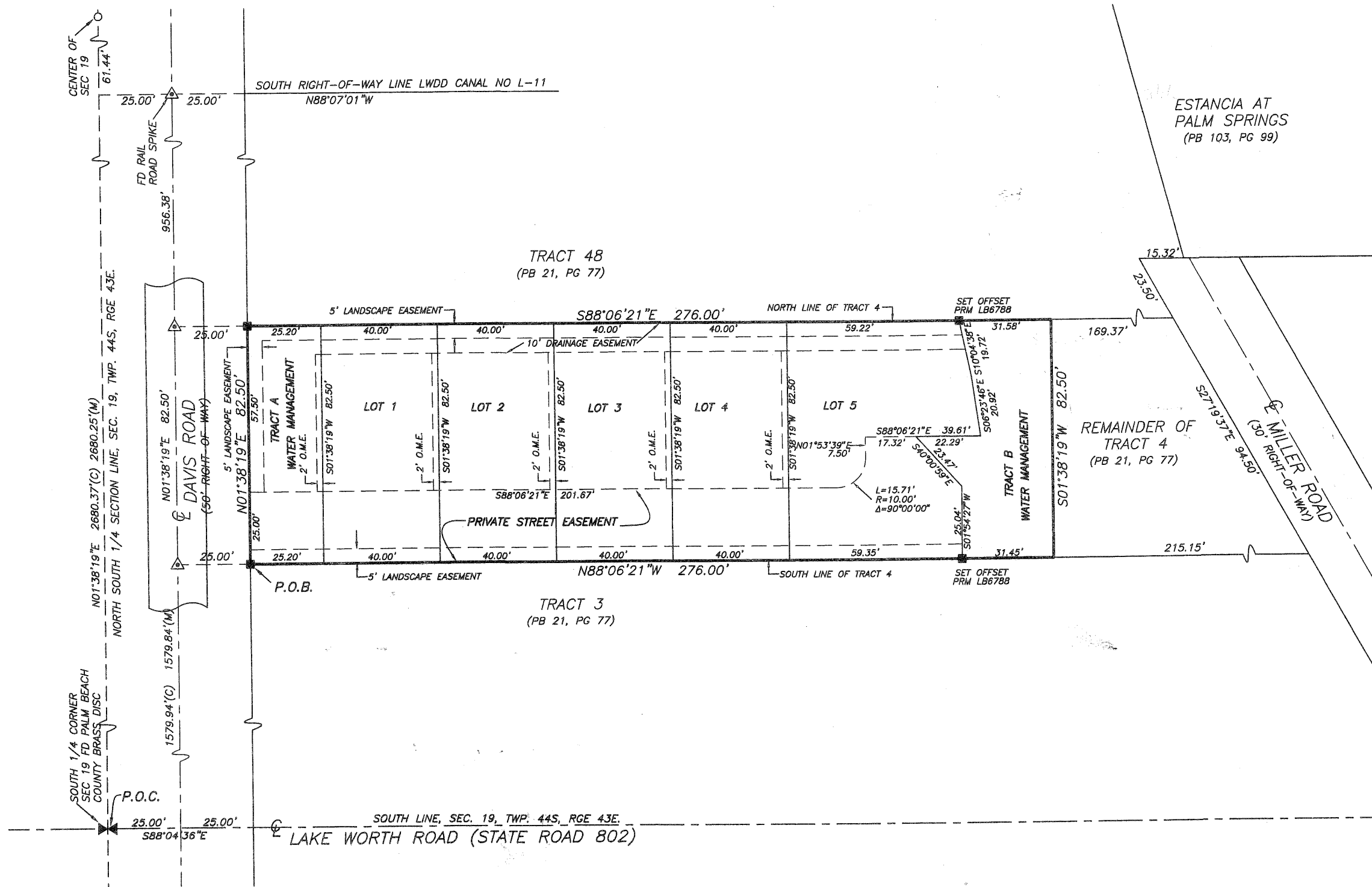
Sheet 2 of 2

STATE OF FLORIDA
COUNTY OF PALM BEACH

This plat was filed for record at this day of 2006, and duly recorded in Plat Book No. on Pages through

SHARON R. BOCK
Clerk Circuit Court

By:



FINAL
JANUARY 18, 2006

PM SURVEYING
LICENSED BUSINESS NO. 6788
4546 CAMBRIDGE STREET
WEST PALM BEACH, FL 33415
OFFICE: (561) 478-7764
FAX: (561) 478-1094

HIDDEN SPRINGS
SECTION 19, TOWNSHIP 44 SOUTH,
RANGE 43 EAST
VILLAGE OF PALM SPRINGS, FLORIDA

Drawn by: R. HAGLER	Date: 12-20-05	SCALE: AS SHOWN	SHEET 2	OF 2
Checked by: R. HAGLER	Dwg File: XXX DAVIS RD PLAT			