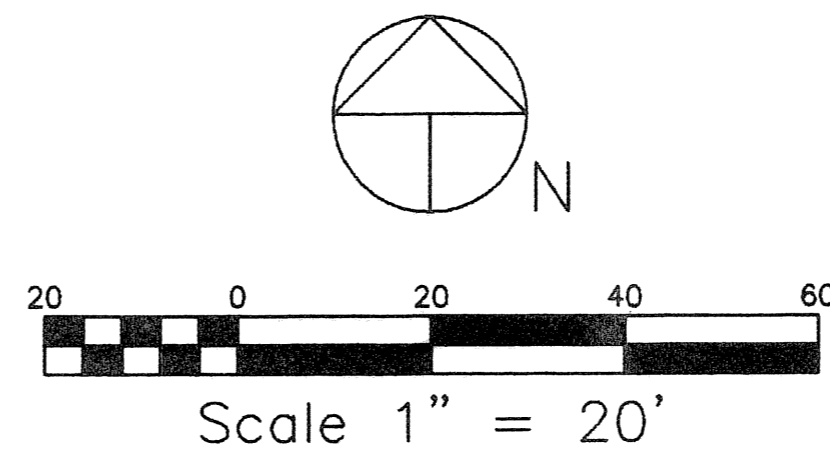
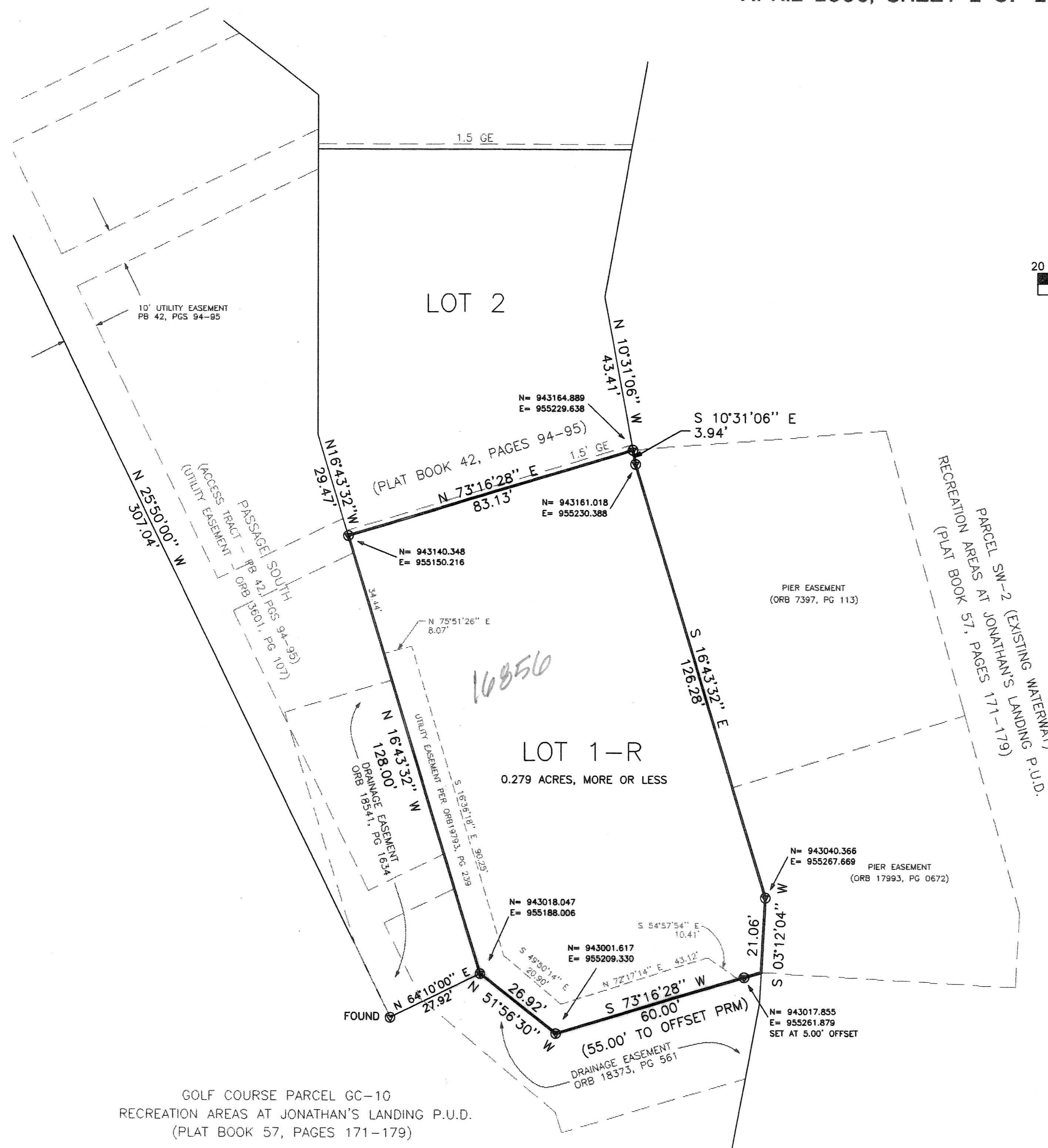


# Mattison's Replat

A REPLAT OF LOT 1 AND TRACT 'B' OF PLAT FIVE OF JONATHAN'S LANDING - PASSAGE ISLANDS P.U.D.  
 AS RECORDED IN PLAT BOOK 42, PAGES 94 AND 95  
 LYING IN SECTIONS 6 AND 7, TOWNSHIP 41 SOUTH, RANGE 43 EAST  
 PALM BEACH COUNTY, FLORIDA  
 APRIL 2006, SHEET 2 OF 2



**LEGEND:**

- DENOTES PERMANENT REFERENCE MONUMENT, PSM No. 4133.
- BEARINGS BASED UPON THE MOST SOUTHWESTERLY LINE OF PASSAGE SOUTH (ACCESS TRACT) BEING NORTH 25°50'00" EAST, PER THE ORIGINAL PLAT, AS SHOWN HEREON.
- ABBREVIATIONS:  
 1.5' GE = 1.5' WIDE GUTTER EASEMENT (PER PLAT & ORB 3549, PG 1775, AS AMENDED PER ORB 7597, PG 803 AND ORB 7905, PG 369)  
 ORB = OFFICIAL RECORD BOOK  
 PG = PAGE  
 I & E ESMT = INGRESS EGRESS EASEMENT
- ALL EASEMENTS SHOWN ARE PER THE ORIGINAL PLAT UNLESS OTHERWISE NOTED.

**GPS COORDINATE NOTES:**

- COORDINATES SHOWN ARE GRID
- DATUM - NAD 83, 1990 ADJUSTMENT
- ZONE - FLORIDA EAST
- UNIT - US SURVEY FOOT
- COORDINATE SYSTEM 1983 STATE PLANE
- TRANSVERSE MERCATOR PROJECTION
- ROTATION EQUATION:  
 NORTH 16°43'32" WEST (PLAT BEARING)  
 NORTH 16°16'49" WEST (GRID BEARING)  
 = 00°26'43" COUNTER-CLOCKWISE BEARING  
 ROTATION (PLAT TO GRID)
- SCALE FACTOR: 1.00004 (PLAT TO GRID)
- THE GEODETIC COORDINATES SHOWN HEREON ARE BASED ON A GPS OBSERVATIONS BY DAVID NARRO, PSM, OF SURVEYING SERVICES, INC., RELATIVE TO THE NEAREST CONTROL POINT WITHIN PALM BEACH COUNTY'S GEODETIC CONTROL NETWORK ON THE NORTH AMERICAN DATUM OF 1983 AS READJUSTED BY PALM BEACH COUNTY, FLORIDA IN 1997.

GOLF COURSE PARCEL GC-10  
 RECREATION AREAS AT JONATHAN'S LANDING P.U.D.  
 (PLAT BOOK 57, PAGES 171-179)

This instrument was prepared by Robert P. Blaszyk, PSM, in the offices of

## RPB Consulting, Inc.

Land Surveying and Mapping

7741 North Military Trail, Woodbine Commons, Suite 1, Palm Beach Gardens, Florida 33410  
 Phone (561) 841-7466 Fax (561) 841-3919 Email: rpbconsulting@earthlink.net

**NOTICE:**

THIS PLAT AS RECORDED IN ITS GRAPHIC FORM IS THE OFFICIAL DEPICTION OF THE SUBDIVIDED LANDS DESCRIBED HEREIN AND WILL IN NO CIRCUMSTANCES BE SUPPLANTED IN AUTHORITY BY ANY OTHER GRAPHIC OR DIGITAL FORM OF THE PLAT. THERE MAY BE ADDITIONAL RESTRICTIONS THAT ARE NOT RECORDED ON THIS PLAT THAT MAY BE FOUND IN THE PUBLIC RECORDS OF THIS COUNTY.

SUBDIVISION Mattison's Replat  
 BOOK 107  
 FLOOD ZONE AE  
 QUAD # 11  
 SE  
 TAZ 45  
 PUD NAME Jonathan's Landing