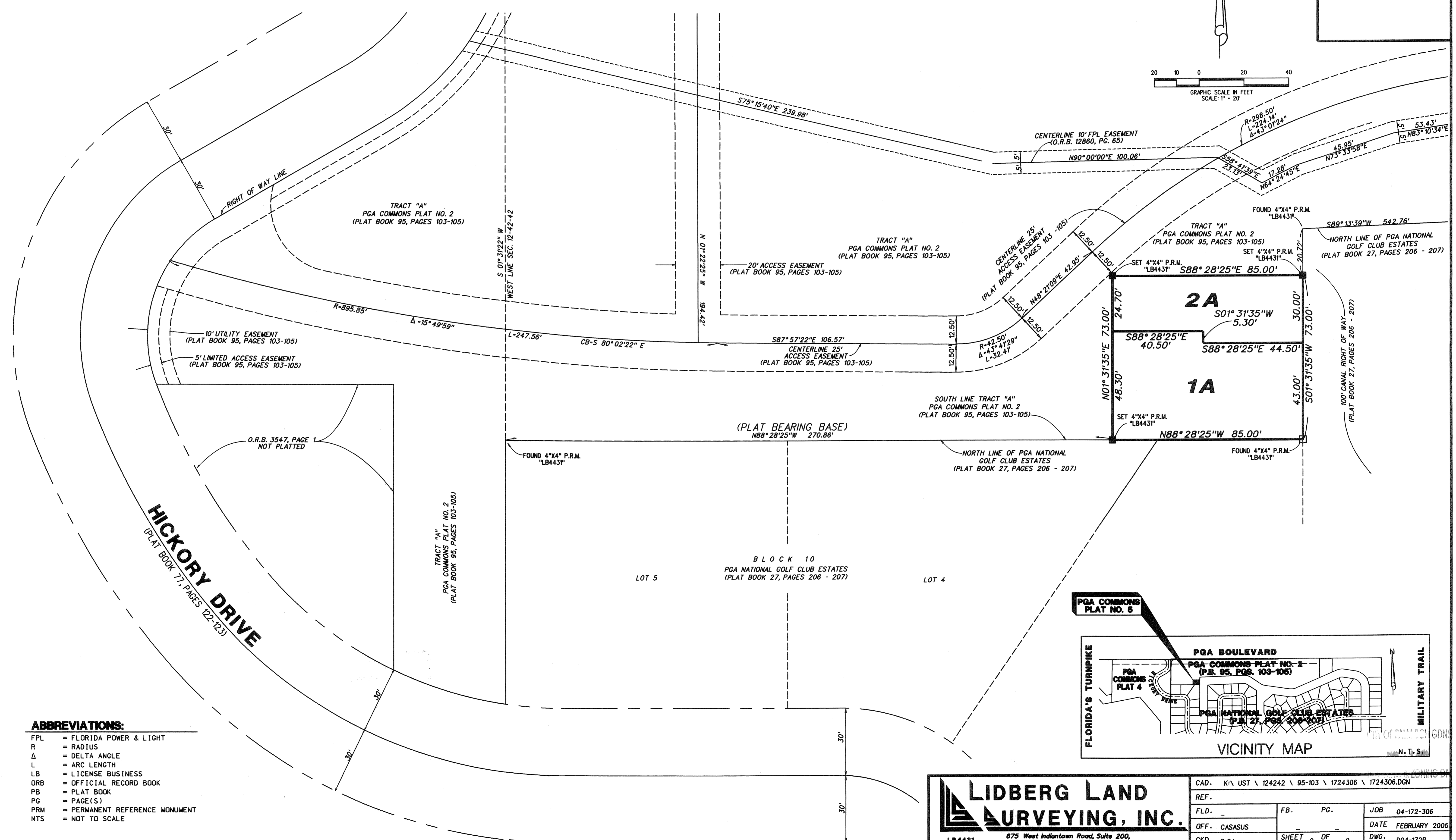
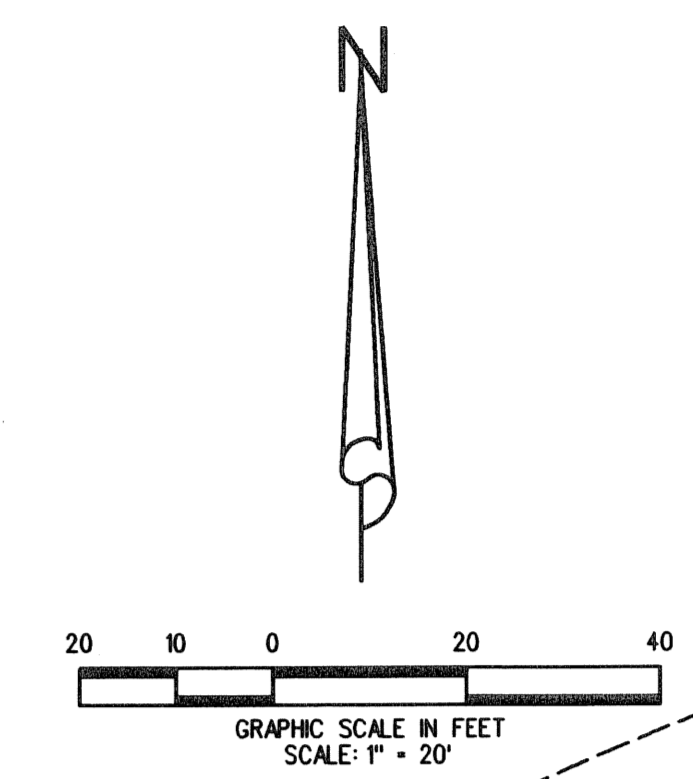


# PGA COMMONS PLAT NO. 5

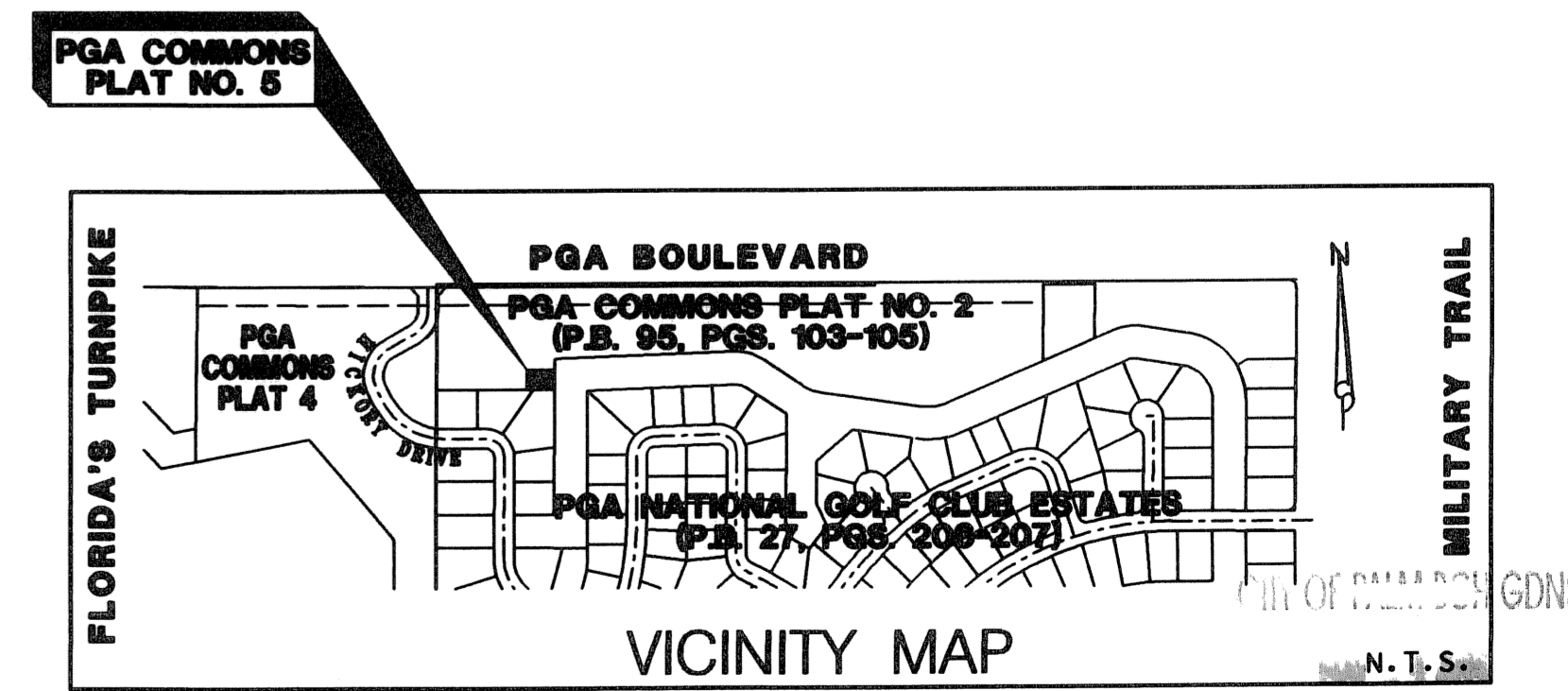
28

BEING A REPLAT OF LOTS 1 AND 2, PGA COMMONS PLAT NO. 2,  
AS RECORDED IN PLAT BOOK 95, PAGES 103 THROUGH 105, PUBLIC  
RECORDS OF PALM BEACH COUNTY, FLORIDA  
LYING IN SECTION 12, TOWNSHIP 42 SOUTH, RANGE 42 EAST,  
CITY OF PALM BEACH GARDENS, PALM BEACH COUNTY, FLORIDA

MAY 2006 SHEET 2 OF 2



- ABBREVIATIONS:**
- FPL = FLORIDA POWER & LIGHT
  - R = RADIUS
  - Δ = DELTA ANGLE
  - L = ARC LENGTH
  - LB = LICENSE BUSINESS
  - ORB = OFFICIAL RECORD BOOK
  - PB = PLAT BOOK
  - PG = PAGE(S)
  - PRM = PERMANENT REFERENCE MONUMENT
  - NTS = NOT TO SCALE



**LIDBERG LAND SURVEYING, INC.**

675 West Indiantown Road, Suite 200,  
Jupiter, Florida 33458 TEL. 561-746-8454

CAD. K:\UST \ 124242 \ 95-103 \ 1724306 \ 1724306.DGN		
REF.		
FLD. -	FB. PG.	JOB 04-172-306
OFF. CASASUS		DATE FEBRUARY 2006
CKD. D.C.L.	SHEET 2 OF 2	DWG. D04-172P