



CARNAHAN · PROCTOR · CROSS, INC.

CONSULTING ENGINEERS · SURVEYORS · PLANNERS

6101 WEST ATLANTIC BOULEVARD, MARGATE, FLORIDA 33063
PHONE: 954-972-3959 FAX: 954-972-4178

NOVEMBER 2005

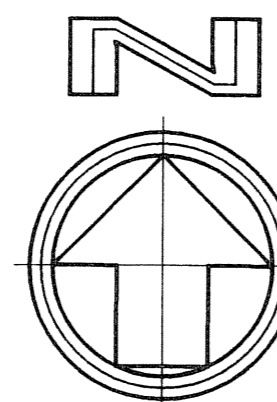
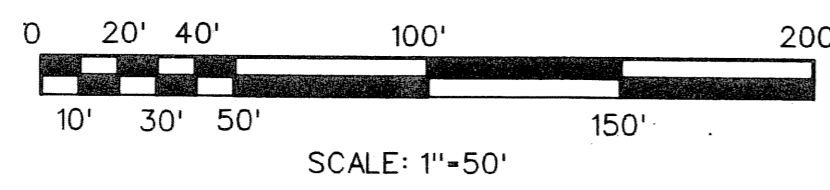
041129

JM

SUNTERRA PUD

A REPLAT OF A PORTION OF "MODEL LAND CO. SUBDIVISION OF SEC 35 T.43S. R.42E." (PLAT BOOK 5, PAGE 77, PUBLIC RECORDS OF PALM BEACH COUNTY, FLORIDA), BEING A PARCEL OF LAND IN THE NORTHWEST ONE-QUARTER OF SECTION 35, TOWNSHIP 43 SOUTH, RANGE 42 EAST, PALM BEACH COUNTY, FLORIDA

46



N 858345.613
E 938175.725

FND. P.B.C. BRASS DISK N.W. CORNER SECTION 35-43-42

N 858264.782
E 938716.769

N 857680.401
E 938701.234

N 85709.560
E 938107.828

FND. P.B.C. BRASS DISK WEST 1/4 CORNER SECTION 35-43-42

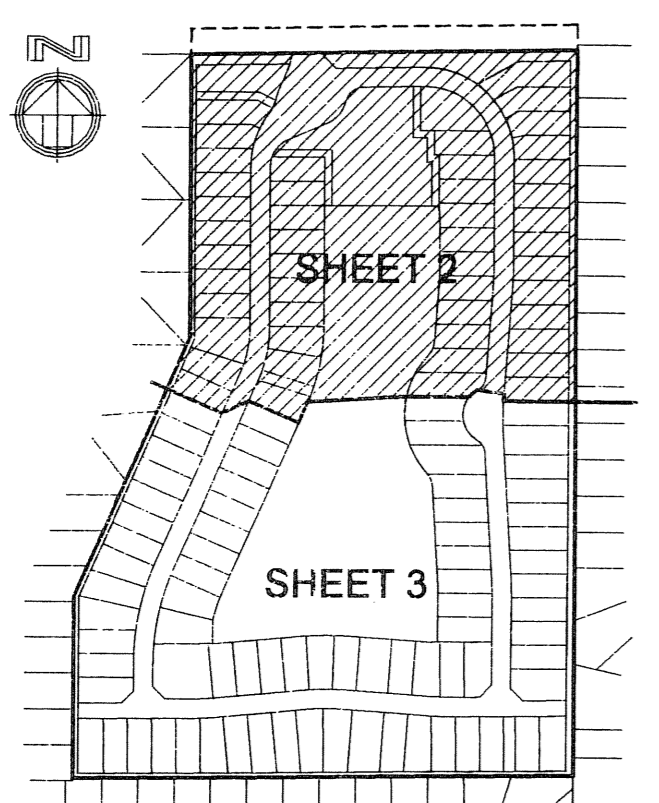
	RADIUS	CENTRAL ANGLE	ARC LENGTH	CHORD BEARING	CHORD LENGTH
C-1	R=63.00"	D=35° 44' 12"	A=39.29'	CHB-S18° 46' 26"E	CH=38.66'
C-2	R=38.50"	D=80° 18' 26"	A=53.96'	CHB-S03° 46' 26"W	CH=49.85'
C-3	R=149.00"	D=45° 25' 46"	A=118.14'	CHB-N66° 22' 47"E	CH=115.07'
C-4	R=1000.00"	D=04° 18' 08"	A=75.09'	CHB-S02° 10' 45"W	CH=75.07'
C-10	R=250.00"	D=23° 33' 09"	A=102.77'	CHB-N11° 49' 26"E	CH=102.05'
C-11	R=115.00"	D=59° 19' 37"	A=119.08'	CHB-N29° 42' 40"E	CH=113.83'
C-12	R=232.00"	D=15° 42' 34"	A=63.61'	CHB-N51° 31' 11"E	CH=63.41'
C-13	R=1020.00"	D=04° 18' 08"	A=76.59'	CHB-S02° 10' 45"W	CH=76.57'
C-18	R=46.00"	D=15° 48' 59"	A=12.70'		
C-19	R=54.00"	D=27° 16' 24"	A=25.70'		
C-20	R=117.00"	D=17° 05' 04"	A=34.89'		
C-21	R=980.00"	D=04° 18' 08"	A=73.59'		
C-22	R=35.00"	D=56° 30' 35"	A=34.52'		
C-28	R=270.00"	D=23° 33' 09"	A=110.99'		
C-29	R=32.00"	D=26° 10' 09"	A=14.62'		
C-30	R=208.00"	D=06° 27' 55"	A=23.47'		
C-31	R=60.00"	D=16° 03' 35"	A=16.82'		
C-32	R=184.50"	D=06° 03' 57"	A=19.53'		
C-33	R=54.00"	D=18° 32' 54"	A=17.48'		
C-34	R=270.00"	D=04° 33' 08"	A=21.45'		
C-35	R=382.50"	D=03° 18' 01"	A=22.03'		
C-36	R=117.00"	D=06° 49' 05"	A=13.92'		
C-37	R=117.00"	D=10° 15' 59"	A=20.96'		
C-38	R=54.00"	D=08° 43' 31"	A=8.22'		
C-39	R=32.00"	D=16° 14' 20"	A=9.07'		
C-40	R=32.00"	D=09° 55' 49"	A=5.55'		

LEGEND

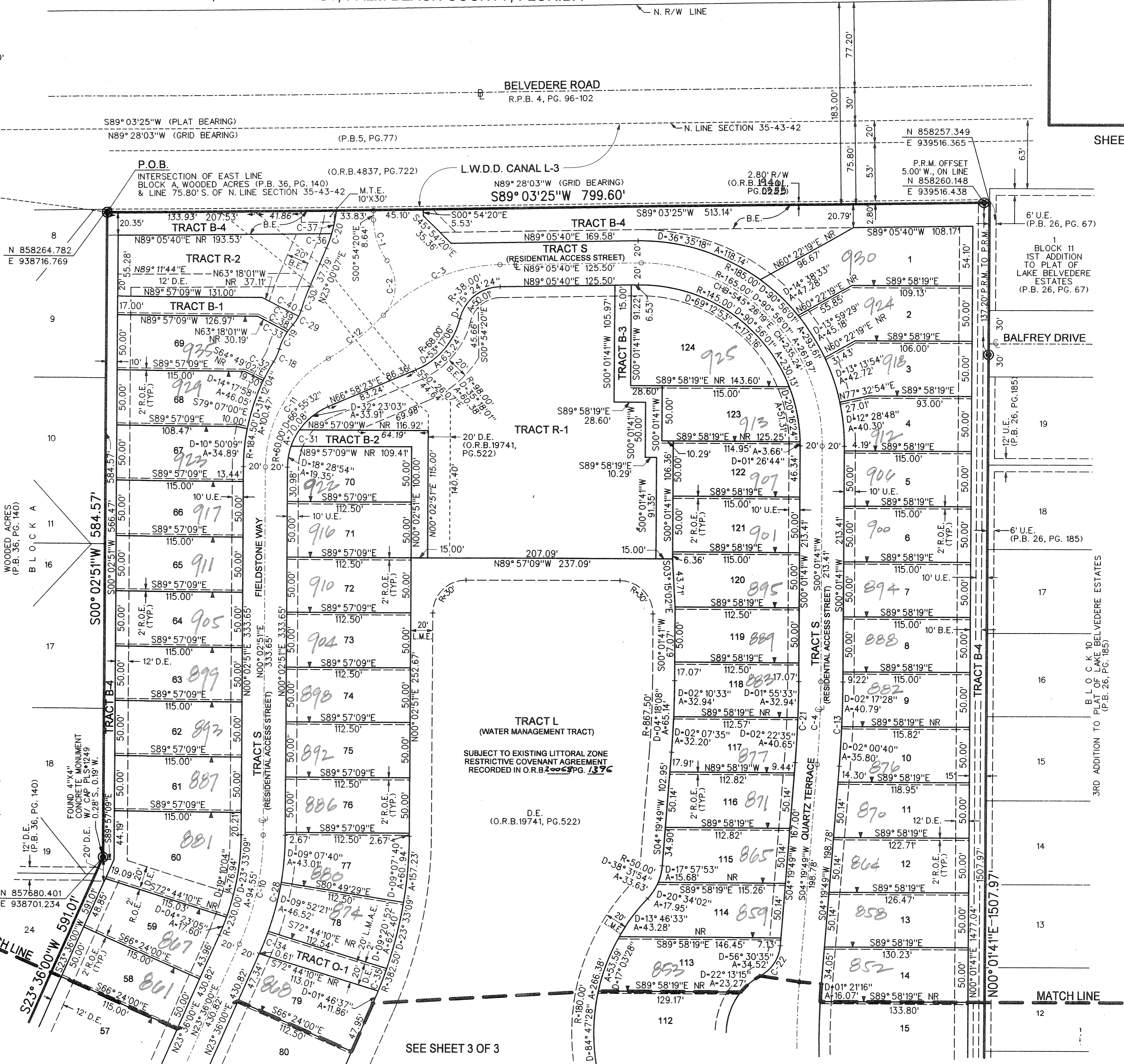
- CENTERLINE
- PERMANENT CONTROL POINT
- PERMANENT REFERENCE MONUMENT SET 4" DIAMETER CONCRETE MONUMENT W/ DISC STAMPED P.R.M. 152936 (UNLESS OTHERWISE NOTED)
- ▲ ZERO SETBACK LOT LINE

ABBREVIATIONS

- A - ARC LENGTH
- B.E. - BUFFER EASEMENT
- BLDG. - BUILDING
- CH - CHORD
- CB - CHORD BEARING
- D - DELTA (CENTRAL ANGLE)
- D.E. - DRAINAGE EASEMENT
- DESC. - DESCRIPTION
- FND. - FOUND
- L.M.A.E. - LAKE MAINTENANCE ACCESS EASEMENT
- L.M.E. - LAKE MAINTENANCE EASEMENT
- L.S.E. - LIFT STATION EASEMENT
- L.W.D.D. - LAKE WORTH DRAINAGE DISTRICT
- M.T.E. - MASS TRANSIT EASEMENT
- NR - NON RADIAL
- O.R.B. - OFFICIAL RECORDS BOOK
- P.B. - PLAT BOOK
- P.B.C. - PALM BEACH COUNTY RECORDS
- P.S.C. - PALM BEACH COUNTY
- PG. - PAGE(S)
- P.R.M. - PERMANENT REFERENCE MONUMENT
- PUD - PLANNED UNIT DEVELOPMENT
- R - RADIUS
- R.O.E. - ROOF OVERHANG EASEMENT
- R.P.B. - ROAD PLAT BOOK
- R/W - RIGHT-OF-WAY
- TYP. - TYPICAL
- U.E. - UTILITY EASEMENT



KEY MAP NOT TO SCALE



SEE SHEET 3 OF 3

SUBDIVISION SUNTERRA
BLOCK 10B
FLOOD ZONE B
QUAD 31
SS
TRAZ 22-7
FOOD NAME

FILE: S:\041129\cond\041129pp2.dgn
DATE: 10-Nov-05 11:40