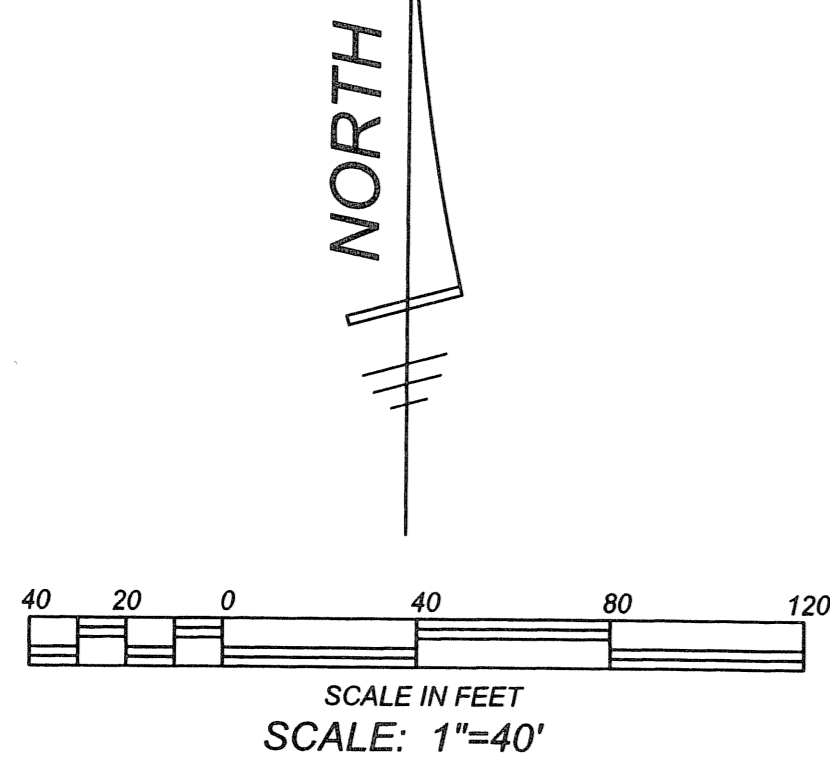


ABC LIQUORS

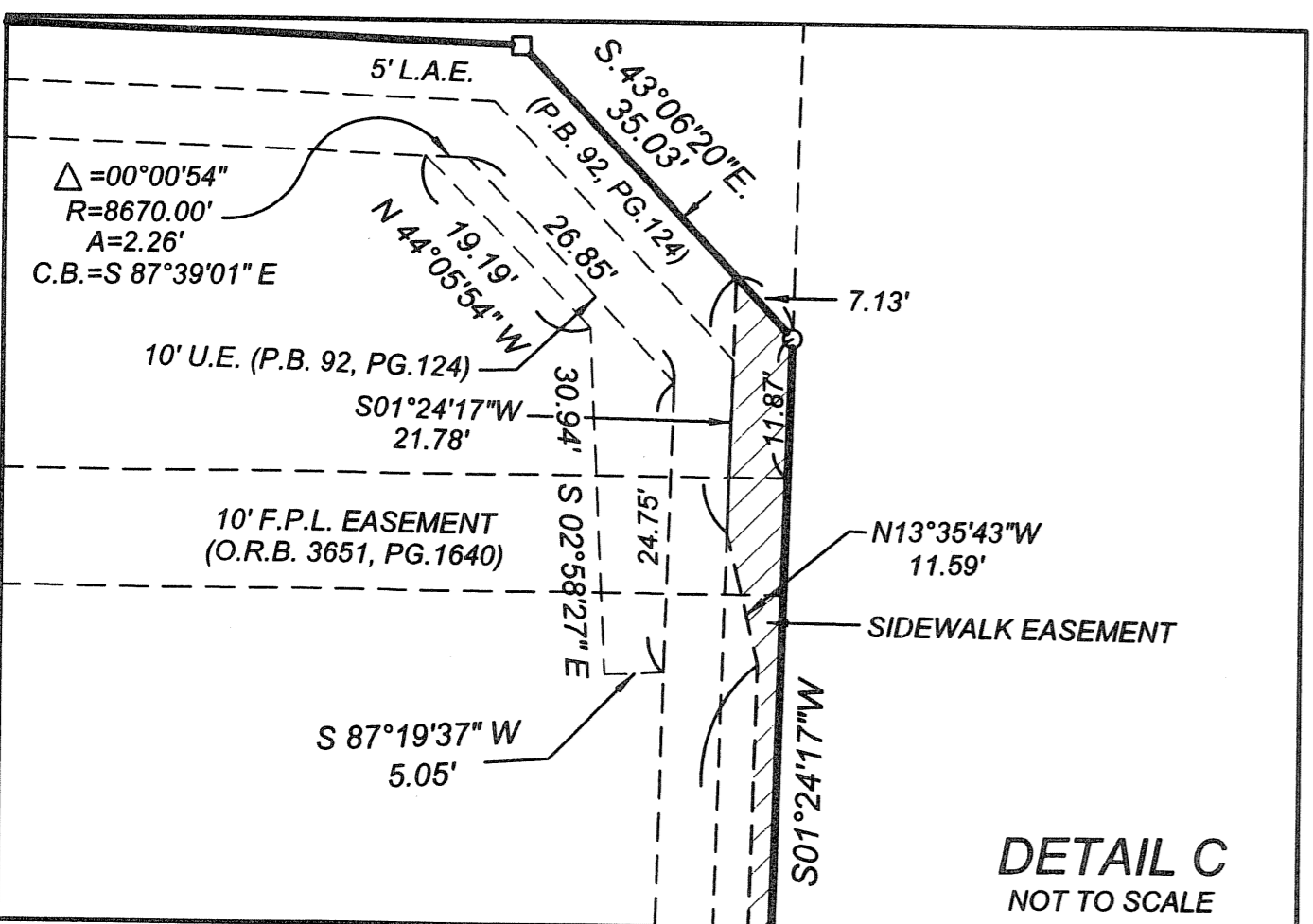
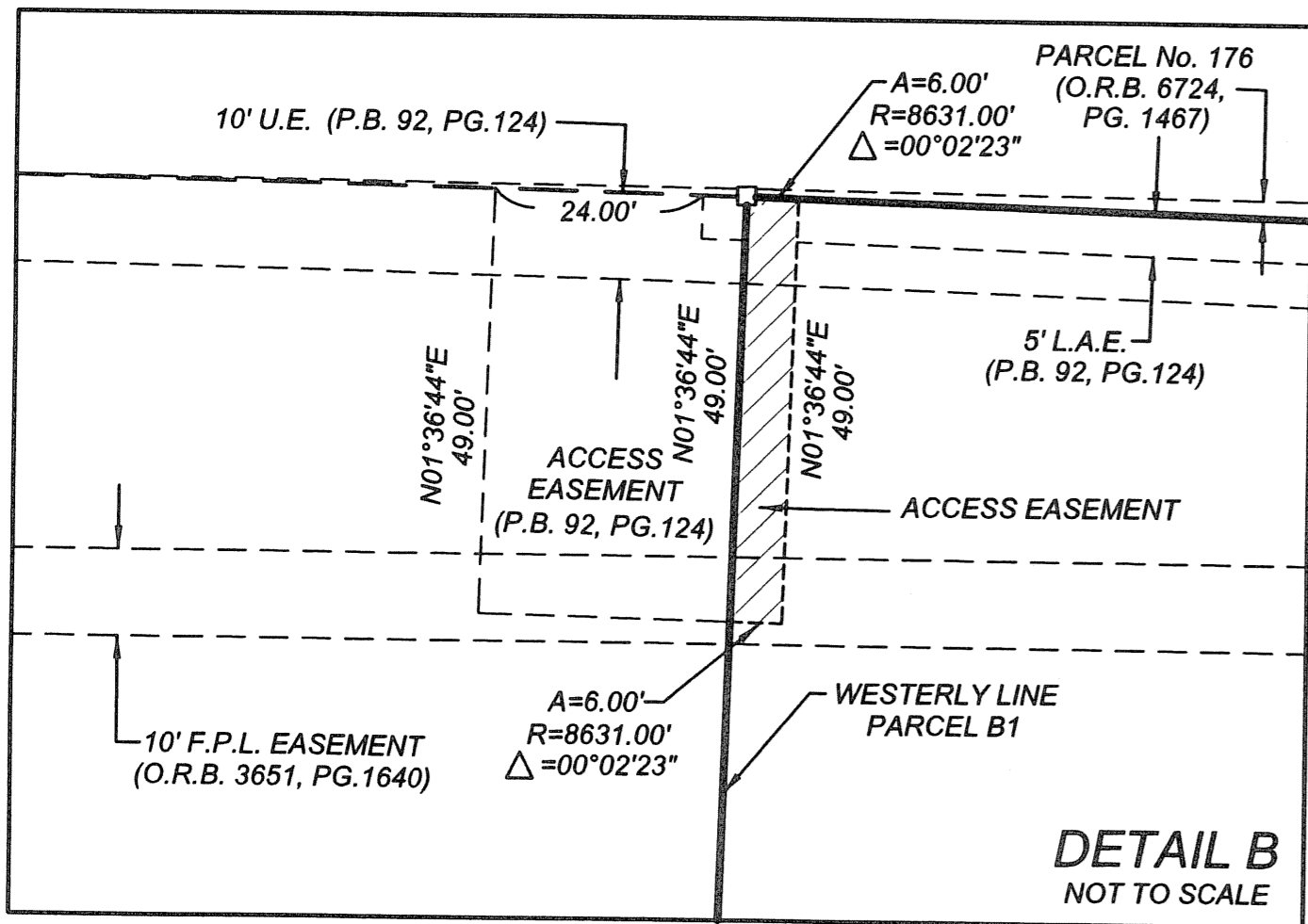
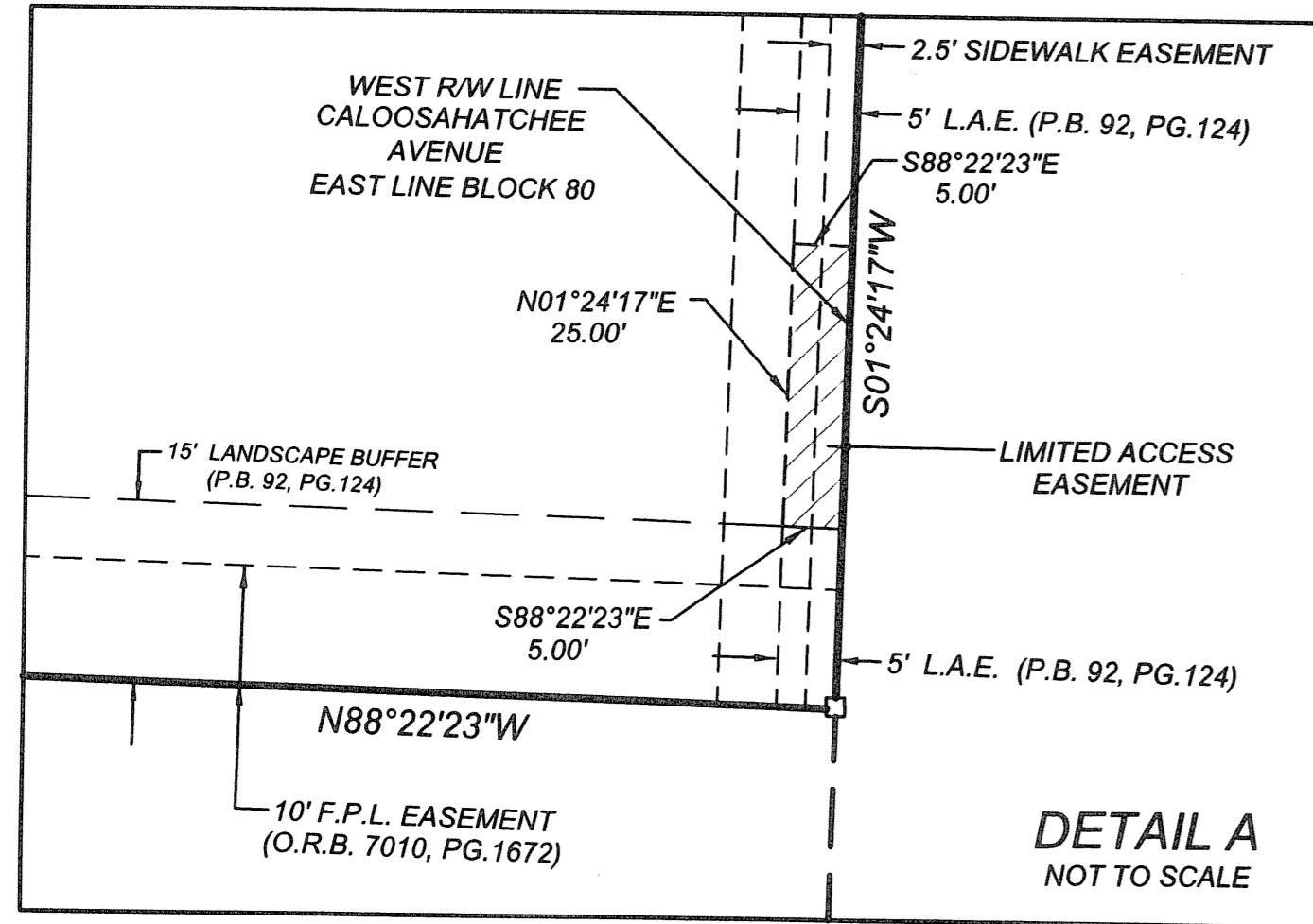
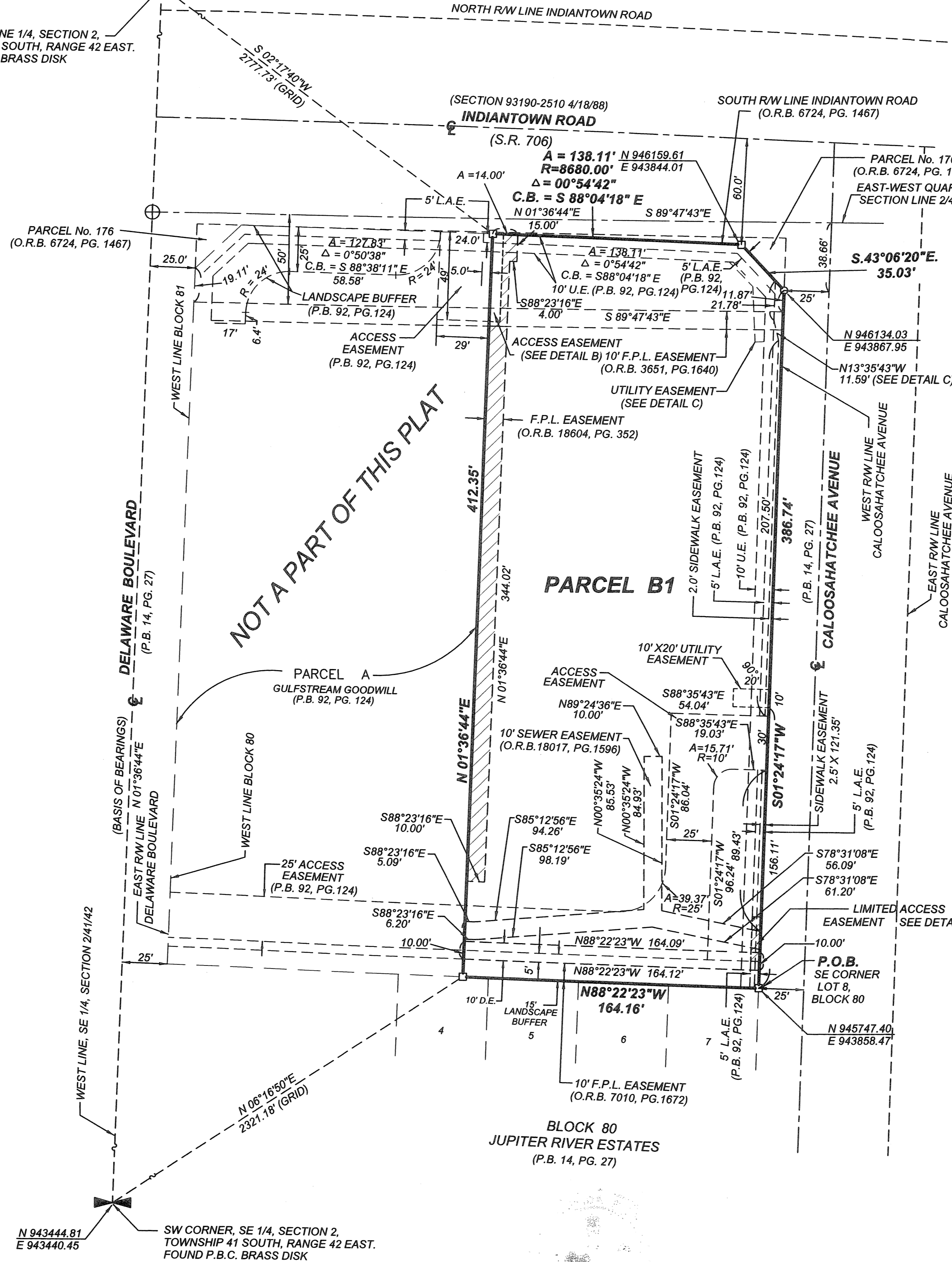
BEING A REPLAT OF PARCEL B, AS RECORDED IN THE PLAT OF GULFSTREAM GOODWILL, PLAT BOOK 92, PAGE 124, PUBLIC RECORDS OF PALM BEACH COUNTY, FLORIDA, LYING IN SECTION 2, TOWNSHIP 41 SOUTH, RANGE 42 EAST, TOWN OF JUPITER, PALM BEACH COUNTY, FLORIDA. JUNE, 2006



SHEET 2 OF 2

NW CORNER, NE 1/4, SECTION 2, TOWNSHIP 41 SOUTH, RANGE 42 EAST. FOUND P.B.C. BRASS DISK

N 948939.12
E 943594.87



BEARING ROTATION EQUATION:
N 01°36'44"E (PLAT BEARING)
N 01°36'44"E (GRID BEARING)
00°00'00" = COUNTER CLOCKWISE BEARING ROTATION (PLAT TO GRID)

ABBREVIATIONS & SYMBOLS

- 1. = Denotes set 4" x 4" Concrete Permanent Reference Monuments (P.R.M.'s), stamped "P.R.M. LS # 3357.
- 2. = Denotes set Mag Nail & Disk Permanent Reference Monument (P.R.M.) stamped "P.R.M. LS #3357.
- 3. = Centerline.
- 4. = Right of Way.
- 5. = Plat Book.
- 6. = Utility Easement.
- 7. = Drainage Easement.
- 8. = "E coordinate", states the given position of a point (expressed in feet and decimals of a foot) in an East and West direction.
- 9. = "N coordinate", states the given position of a point (expressed in feet and decimals of a foot) in a North and South direction.
- 10. = Arc Length.
- 11. = Central Angle.
- 12. = Radius.
- 13. = Chord Bearing.
- 14. = Official Record Book.
- 15. = Point of Commencement.
- 16. = Point of Beginning.
- 17. = Palm Beach County.
- 18. = Found.
- 19. = Point of Curvature.
- 20. = Fnd. 5/8" Steel Rod and Brass Cap, stamped "WALLACE, LB 4569, P.R.M." encased by sidewalk.
- 21. = State Road.
- 22. = Limited Access Easement.

ABC LIQUORS

WALLACE SURVIVOR
CORP. LICENSED BUSINESS # 406
5553 VILLAGE BOULEVARD, WEST PALM BEACH, FLORIDA 33407 (561) 940-4551

FIELD	JOB NO. 01-1290K	F.S.	PG.
OFFICE	K.S.	DATE	MARCH, 2005
CHK'D	C.W.	REF	01-1290-2.DWG
		SHEET	2 OF 2