

FRENCHMAN'S YACHT CLUB DEVELOPMENT

A PORTION OF SECTION 29, TOWNSHIP 41 SOUTH, RANGE 43 EAST, PALM BEACH COUNTY FLORIDA AND BEING A RE-PLAT OF A PORTION OF TRACT "A", OF THE PLAT OF FRENCHMAN'S CREEK MARINA (P.U.D.) AS RECORDED IN PLAT BOOK 67, PAGES 132-134 AND A PORTION OF THE PLAT OF FRENCHMAN'S CREEK YACHT CLUB AS RECORDED IN PLAT BOOK 67, PAGES 130-131 PALM BEACH COUNTY, FLORIDA

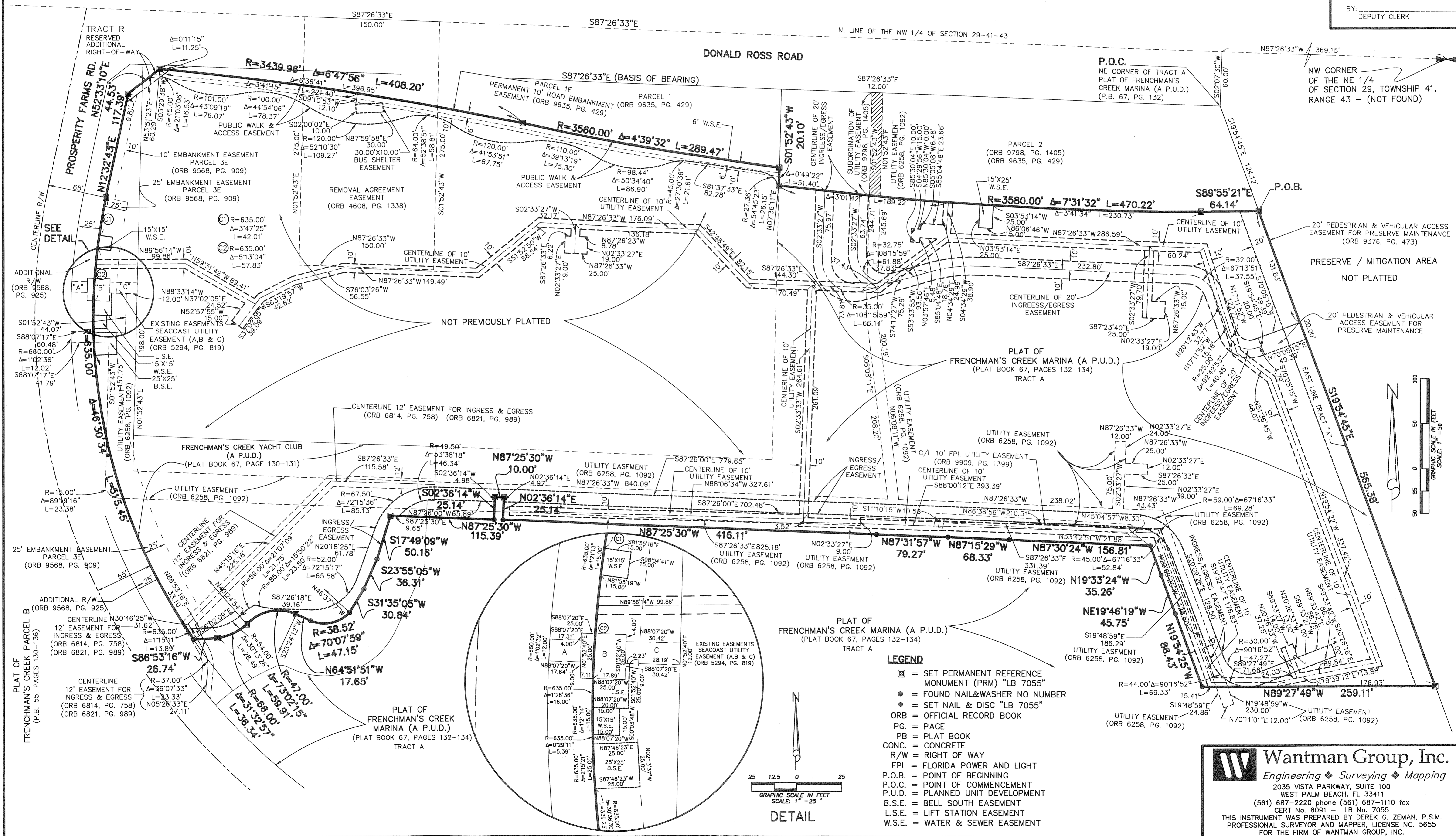
LYING IN SECTION 29,
TOWNSHIP 41 SOUTH, RANGE 43 EAST, CITY OF PALM BEACH
GARDENS, PALM BEACH COUNTY, FLORIDA.

JUNE, 2006 SHEET 2 OF 2

STATE OF FLORIDA
COUNTY OF PALM BEACH
THIS PLAT WAS FILED FOR
RECORD AT _____ M.
THIS _____ DAY OF _____
A.D. 2006 AND DULY RECORDED
IN PLAT BOOK _____ ON
PAGES _____ AND _____

SHARON R. BOCK
CLERK CIRCUIT COURT
AND COMPTROLLER

BY: _____
DEPUTY CLERK



56

Wantman Group, Inc.
Engineering ♦ Surveying ♦ Mapping
2035 VISTA PARKWAY, SUITE 100
WEST PALM BEACH, FL 33411
(561) 687-2220 phone (561) 687-1110 fax
CERT No. 6091 - LB No. 7055
THIS INSTRUMENT WAS PREPARED BY DEREK G. ZEMAN, P.S.M.
PROFESSIONAL SURVEYOR AND MAPPER, LICENSE NO. 5655
FOR THE FIRM OF WANTMAN GROUP, INC.