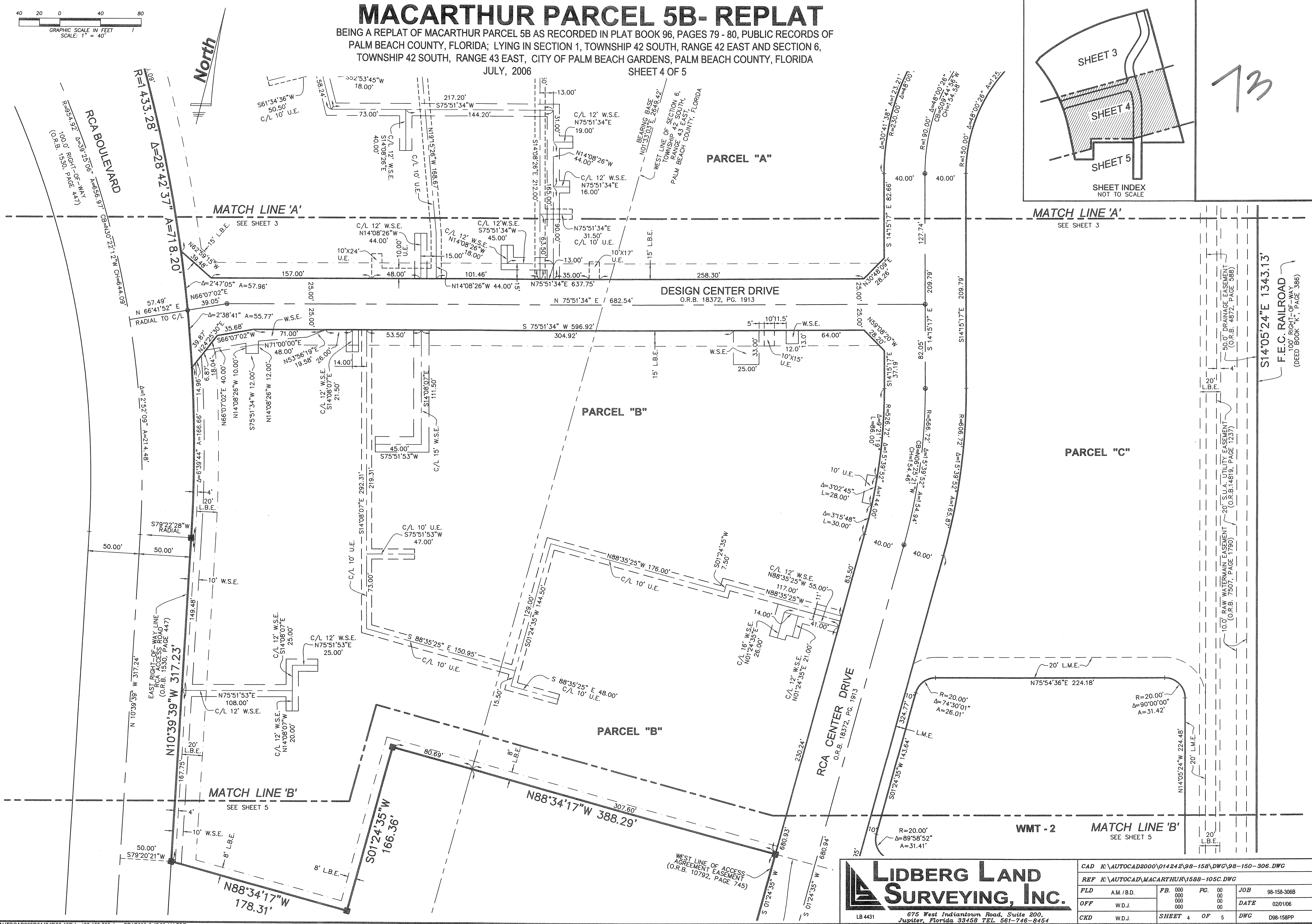
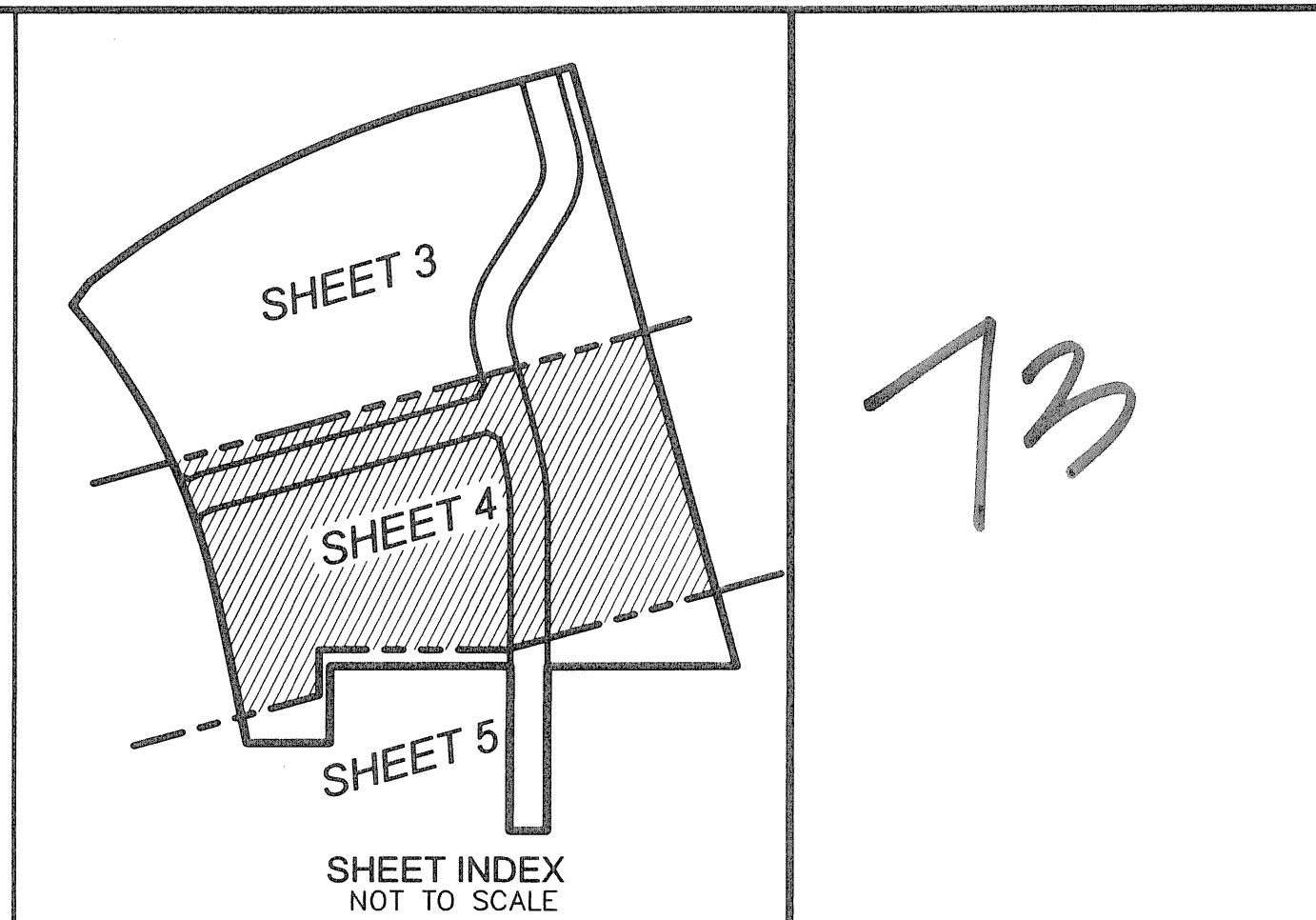


MACARTHUR PARCEL 5B- REPLAT

BEING A REPLAT OF MACARTHUR PARCEL 5B AS RECORDED IN PLAT BOOK 96, PAGES 79 - 80, PUBLIC RECORDS OF PALM BEACH COUNTY, FLORIDA; LYING IN SECTION 1, TOWNSHIP 42 SOUTH, RANGE 42 EAST AND SECTION 6, TOWNSHIP 42 SOUTH, RANGE 43 EAST, CITY OF PALM BEACH GARDENS, PALM BEACH COUNTY, FLORIDA
 JULY, 2006
 SHEET 4 OF 5



LIDBERG LAND SURVEYING, INC.
 675 West Indiantown Road, Suite 200, Jupiter, Florida 33458 TEL 561-746-8454

CAD K:\AUTOCAD2000\01424298-158\DWG\98-150-306.DWG			
REF K:\AUTOCAD\MACARTHUR\1588-105C.DWG			
FLD	A.M./B.D.	FB. 000	PC. 00
OFF	W.D.J.	000	00
CKD	W.D.J.	SHEET 4	OF 5
JOB		98-158-306B	
DATE		02/01/06	
DWG		D98-158PP	