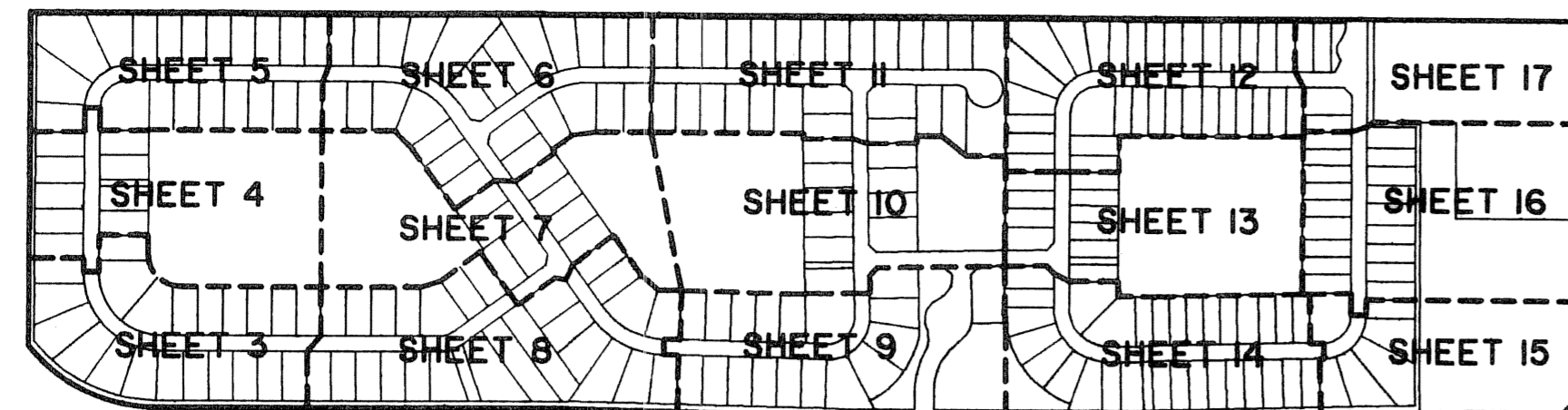
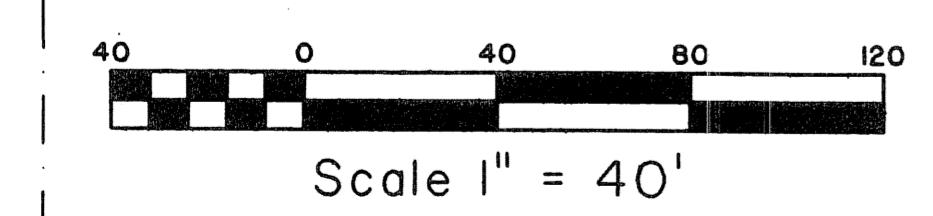
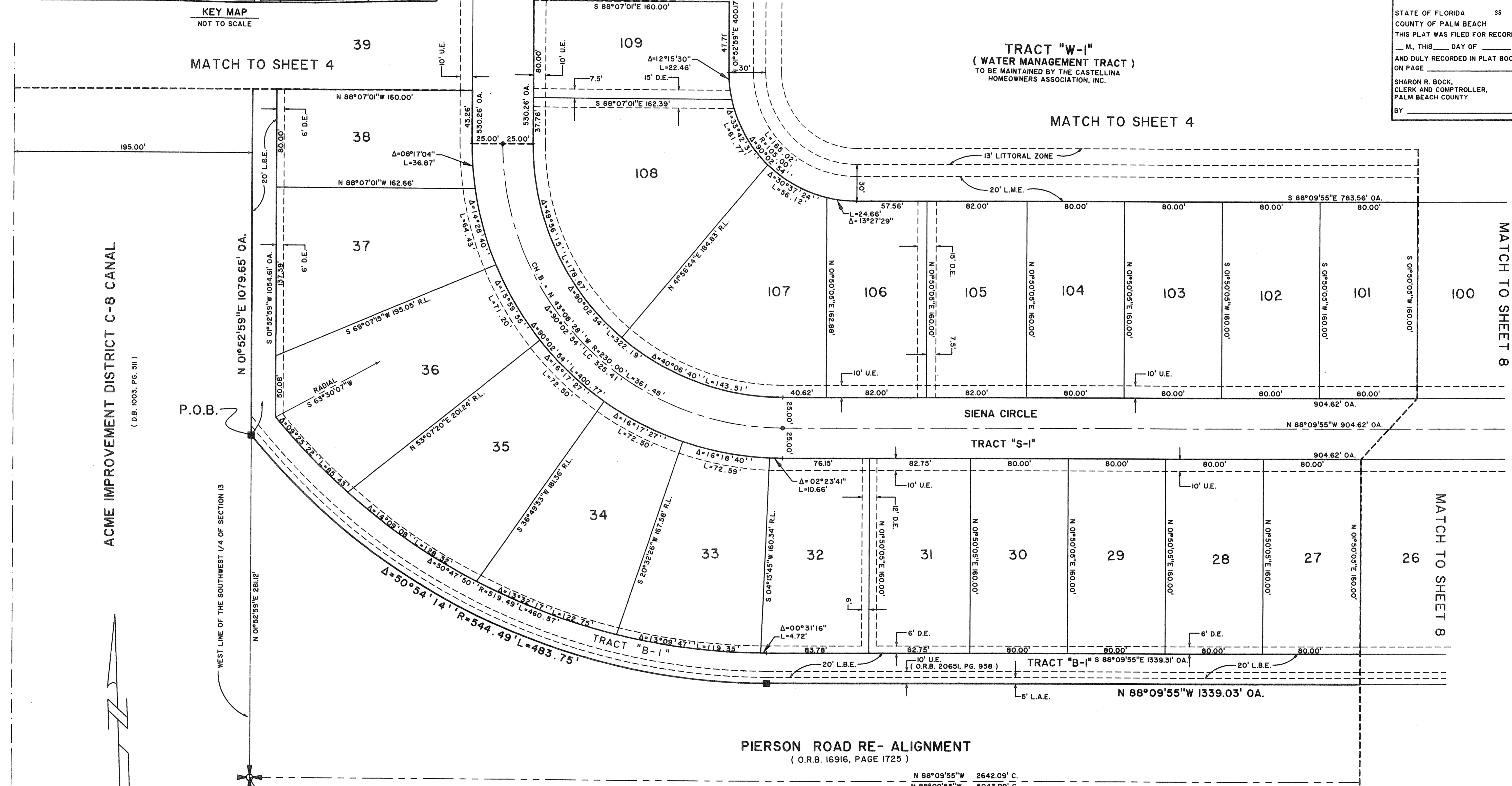


LANIER PROPERTY

LYING IN SECTION 13, TOWNSHIP 44 SOUTH, RANGE 41 EAST,
VILLAGE OF WELLINGTON, PALM BEACH COUNTY, FLORIDA.
SHEET 3 OF 17
MARCH, 2006



STATE OF FLORIDA SS
COUNTY OF PALM BEACH
THIS PLAT WAS FILED FOR RECORD AT _____
M., THIS _____ DAY OF _____ 2006
AND DULY RECORDED IN PLAT BOOK NO. _____
ON PAGE _____
SHARON R. BOCK,
CLERK AND COMPTROLLER,
PALM BEACH COUNTY
BY _____ D.C.



P.O.C.
SW CORNER OF SECTION 13
TOWNSHIP 44 S., RANGE 41 E.
FD. P.B.C. C.M. WITH BRASS DISC

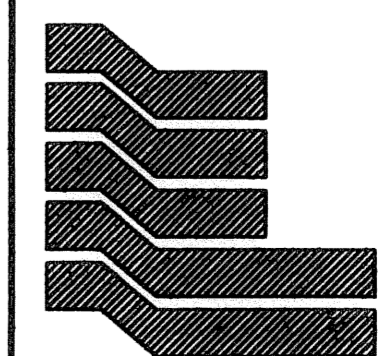
PIERSON ROAD RE- ALIGNMENT
(O.R.B. 16916, PAGE 1725)

N 88°09'55"W 2642.09' C.
N 88°09'55"W 5043.99' C.

OAKMONT ESTATES P.U.D.
(PLAT BOOK 106, PAGES 2 - 9)

UNPLATTED

ACME IMPROVEMENT DISTRICT C-8 CANAL
(D.B. 1003, PG. 511)



Landmark Surveying & Mapping Inc.
1850 Forest Hill Boulevard
Ph. (561) 433-5405 Suite 100 W.P.B. Florida
LB # 4396

LANIER PROPERTY