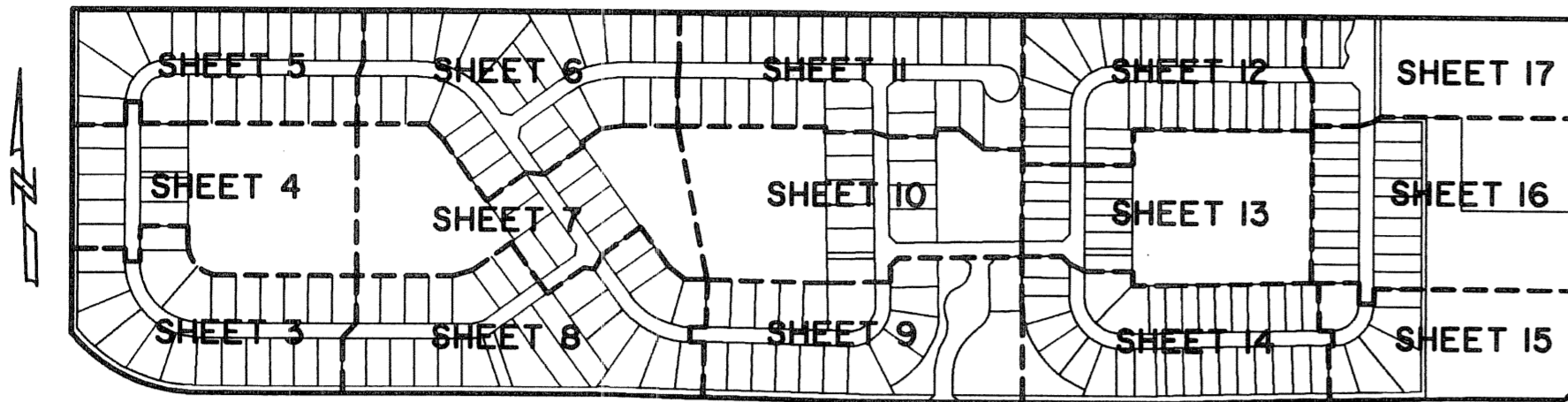


# LANIER PROPERTY

LYING IN SECTION 13, TOWNSHIP 44 SOUTH, RANGE 41 EAST,  
VILLAGE OF WELLINGTON, PALM BEACH COUNTY, FLORIDA.

SHEET 6 OF 17

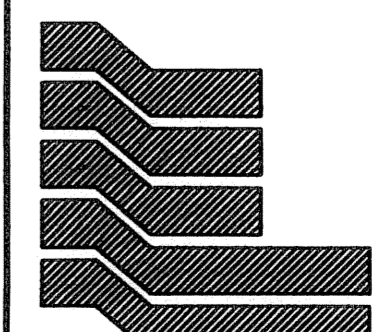
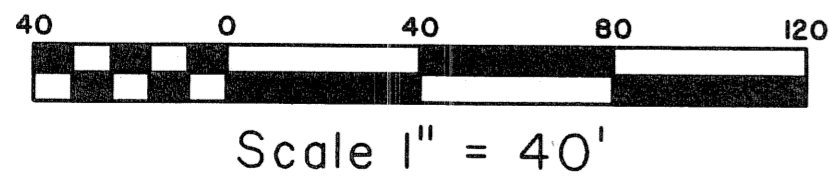
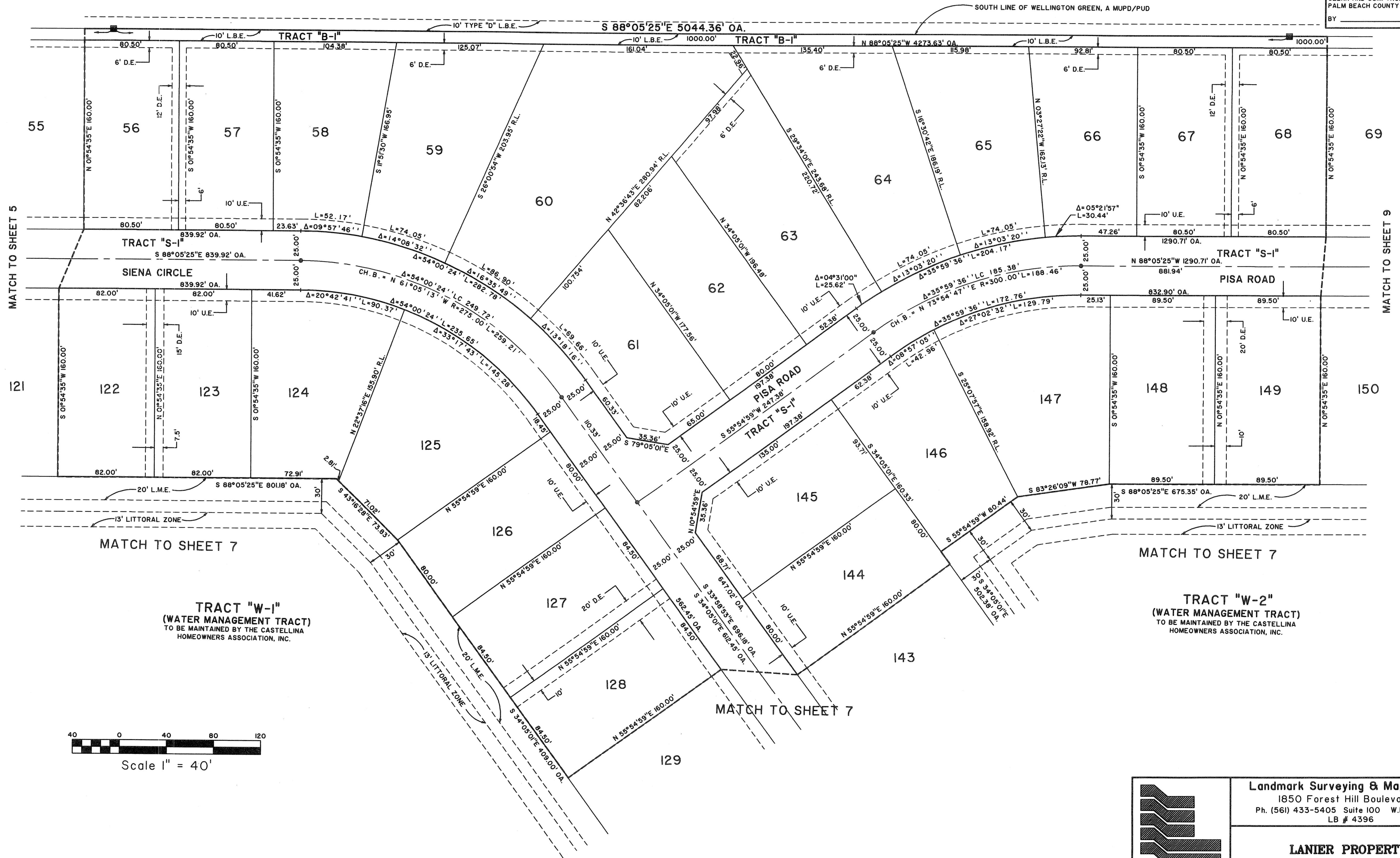
MARCH, 2006



KEY MAP  
NOT TO SCALE

WELLINGTON GREEN, A MUPD/PUD  
( PLAT BOOK 87, PAGES 81 - 90 )

STATE OF FLORIDA SS  
 COUNTY OF PALM BEACH  
 THIS PLAT WAS FILED FOR RECORD AT \_\_\_\_\_  
 M., THIS \_\_\_\_\_ DAY OF \_\_\_\_\_ 2006  
 AND DULY RECORDED IN PLAT BOOK NO. \_\_\_\_\_  
 ON PAGE \_\_\_\_\_  
 SHARON R. BOCK,  
 CLERK AND COMPTROLLER,  
 PALM BEACH COUNTY  
 BY \_\_\_\_\_ D.C.



Landmark Surveying & Mapping Inc.  
 1850 Forest Hill Boulevard  
 Ph. (561) 433-5405 Suite 100 W.P.B. Florida  
 LB # 4396

LANIER PROPERTY