

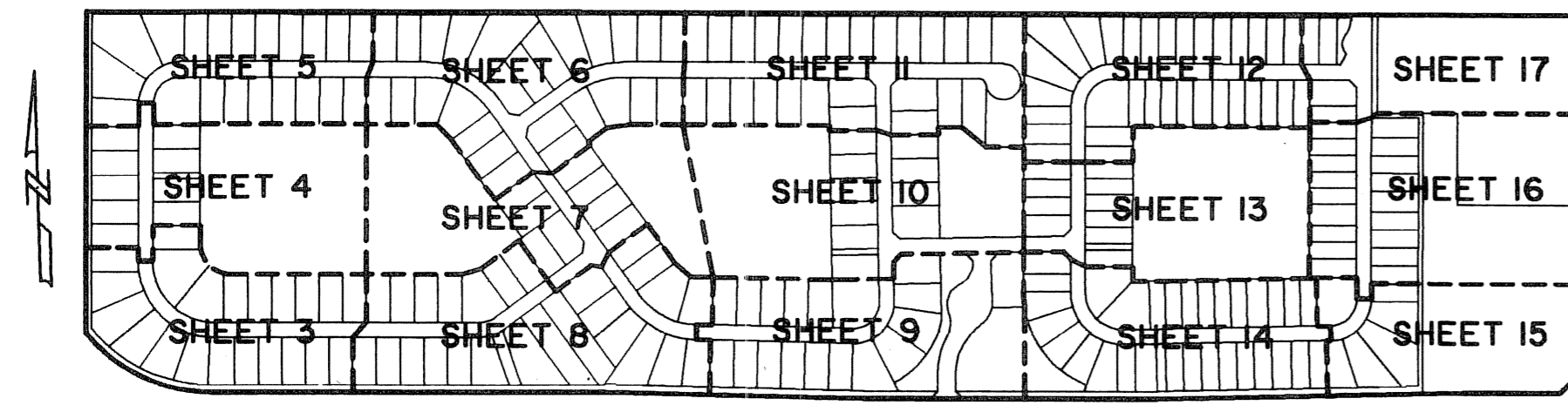
LANIER PROPERTY

LYING IN SECTION 13, TOWNSHIP 44 SOUTH, RANGE 41 EAST,
VILLAGE OF WELLINGTON, PALM BEACH COUNTY, FLORIDA.

SHEET II OF 17

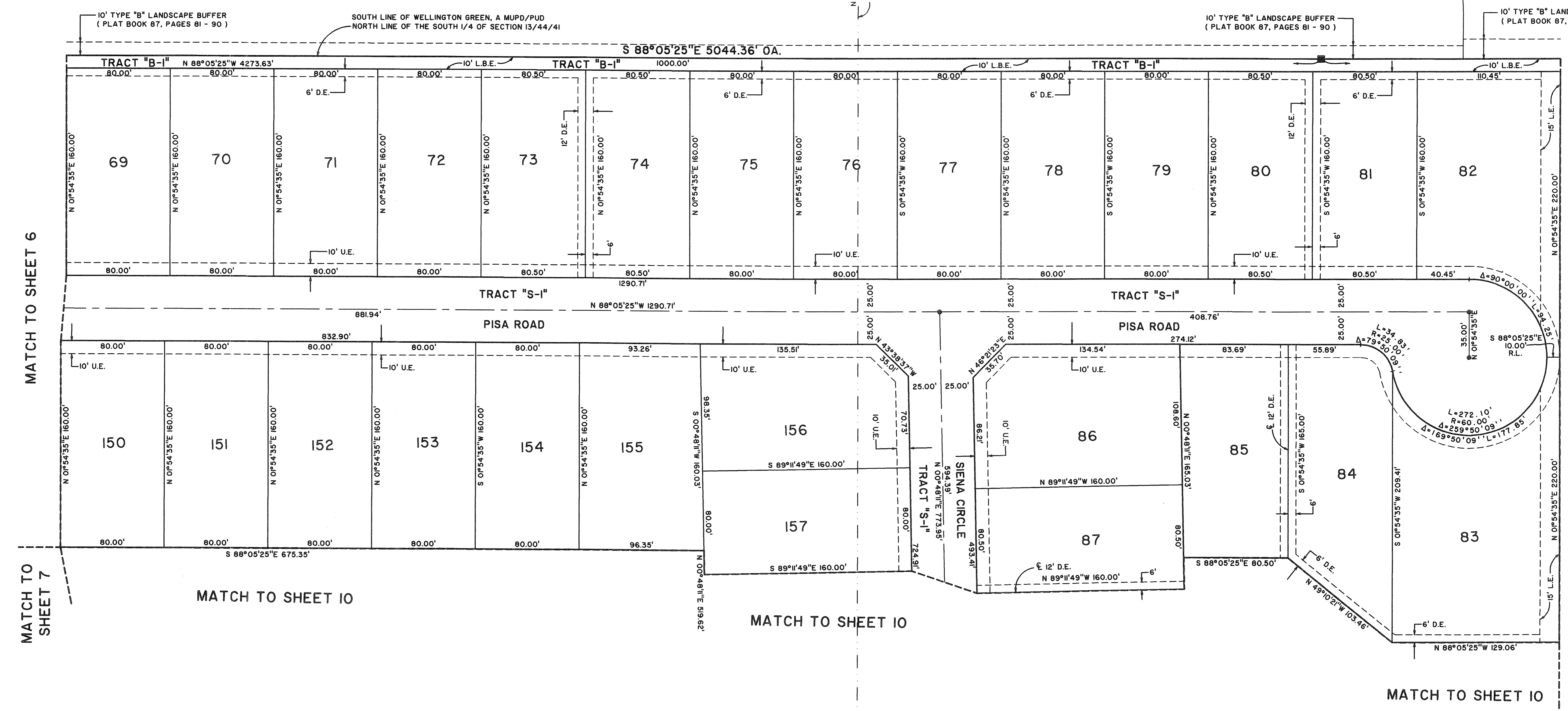
MARCH, 2006

STATE OF FLORIDA SS
COUNTY OF PALM BEACH
THIS PLAT WAS FILED FOR RECORD AT _____
M., THIS _____ DAY OF _____ 2006
AND DULY RECORDED IN PLAT BOOK NO. _____
ON PAGE _____
SHARON R. BOCK,
CLERK AND COMPTROLLER,
PALM BEACH COUNTY
BY _____ D.C.



KEY MAP
NOT TO SCALE

WELLINGTON GREEN, A MUPD/PUD
(PLAT BOOK 87, PAGES 81 - 90)



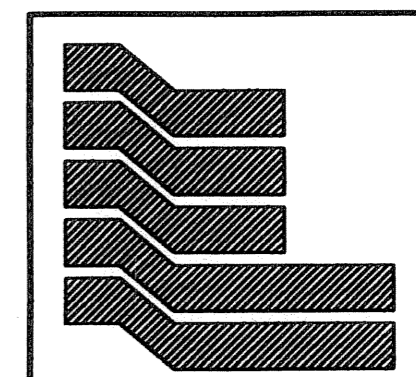
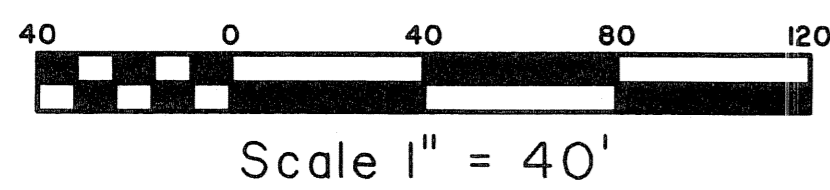
MATCH TO SHEET 6

MATCH TO SHEET 7

MATCH TO SHEET 10

MATCH TO SHEET 10

MATCH TO SHEET 12



Landmark Surveying & Mapping Inc.
1850 Forest Hill Boulevard
Ph. (561) 433-5405 Suite 100 W.P.B. Florida
LB # 4396

LANIER PROPERTY