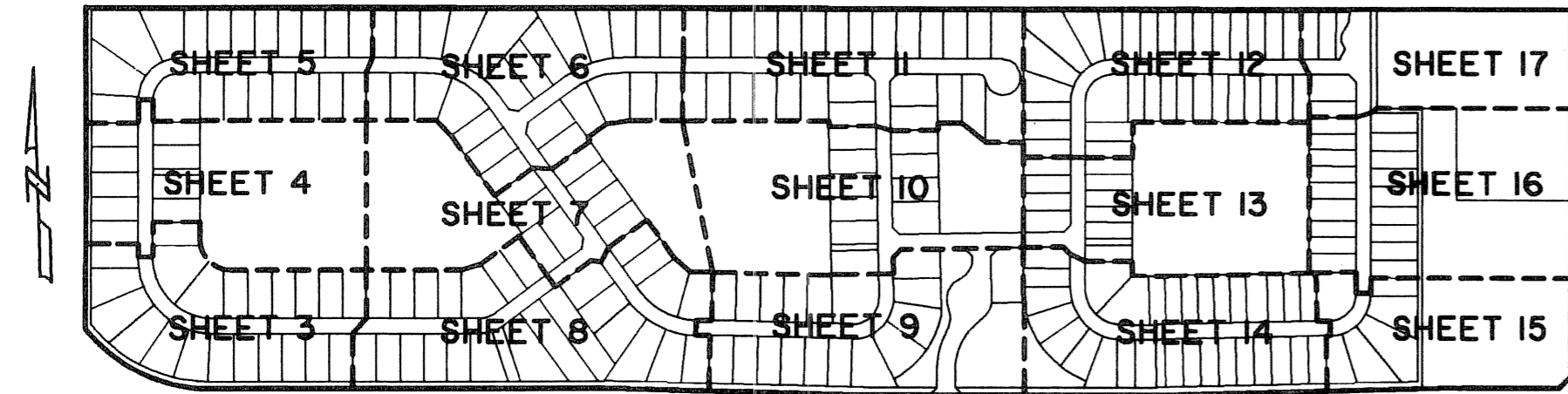


LANIER PROPERTY

LYING IN SECTION 13, TOWNSHIP 44 SOUTH, RANGE 41 EAST,
VILLAGE OF WELLINGTON, PALM BEACH COUNTY, FLORIDA.
SHEET 13 OF 17 MARCH, 2006

STATE OF FLORIDA SS
COUNTY OF PALM BEACH
THIS PLAT WAS FILED FOR RECORD AT _____
M., THIS _____ DAY OF _____ 2006
AND DULY RECORDED IN PLAT BOOK NO. _____
ON PAGE _____
SHARON R. BOCK,
CLERK AND COMPTROLLER,
PALM BEACH COUNTY
BY _____ D.C.

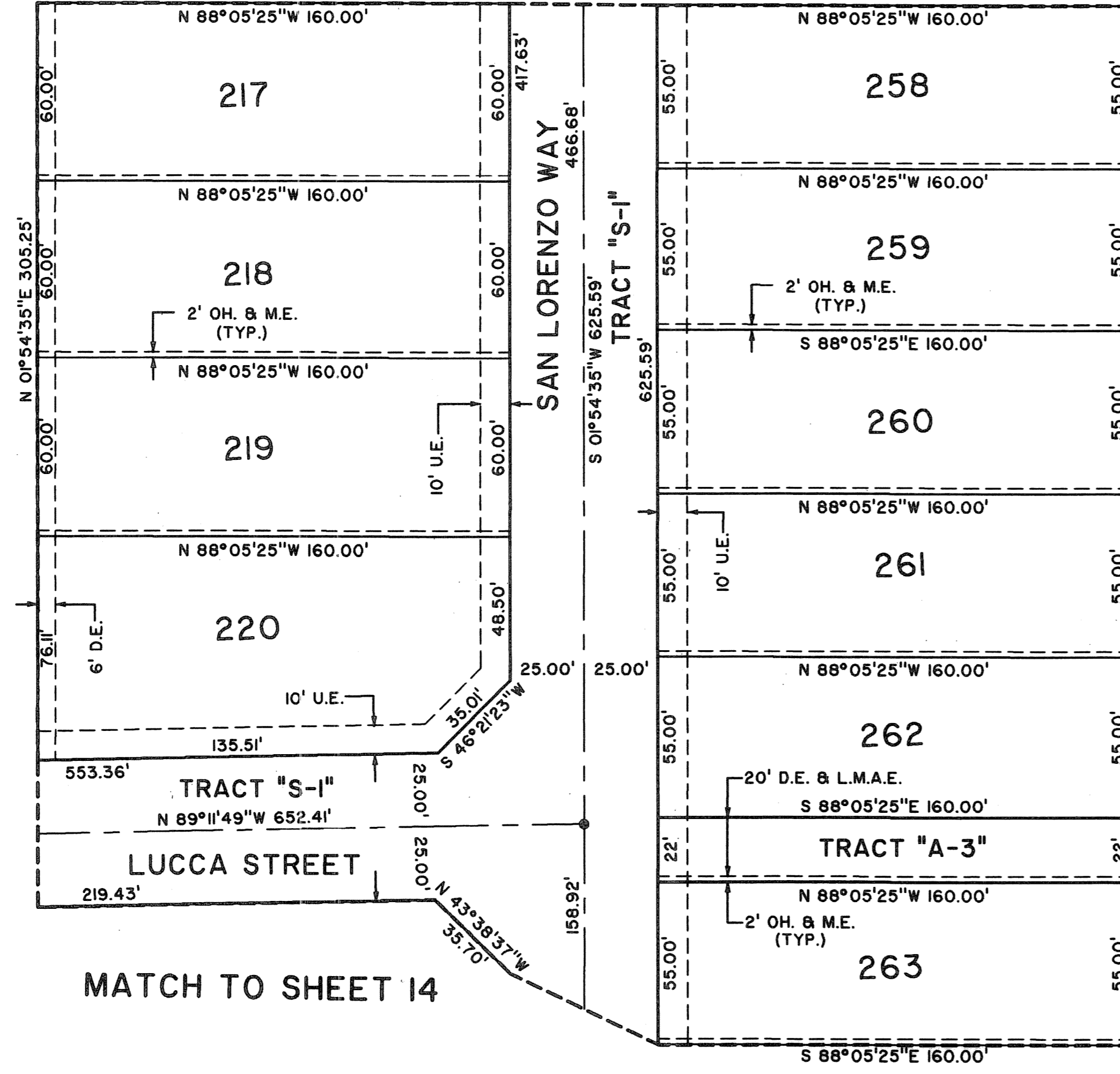


KEY MAP
NOT TO SCALE

MATCH TO SHEET 12

MATCH TO SHEET 12

MATCH TO SHEET 10

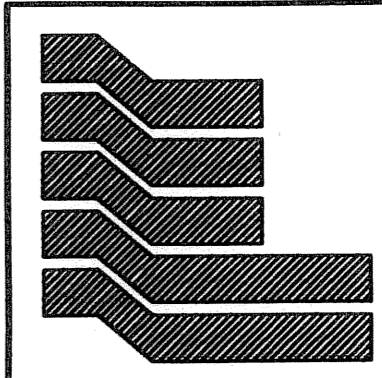
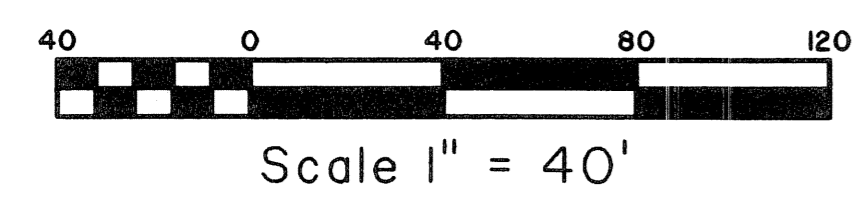


MATCH TO SHEET 14

TRACT "W-3"
(WATER MANAGEMENT TRACT)
TO BE MAINTAINED BY THE CASTELLINA
HOMEOWNERS ASSOCIATION, INC.

MATCH TO SHEET 16

MATCH TO SHEET 14



Landmark Surveying & Mapping Inc.
1850 Forest Hill Boulevard
Ph. (561) 433-5405 Suite 100 W.P.B. Florida
LB # 4396

LANIER PROPERTY