

# BELLE GLADE BUSINESS PARK PHASE II, REPLAT

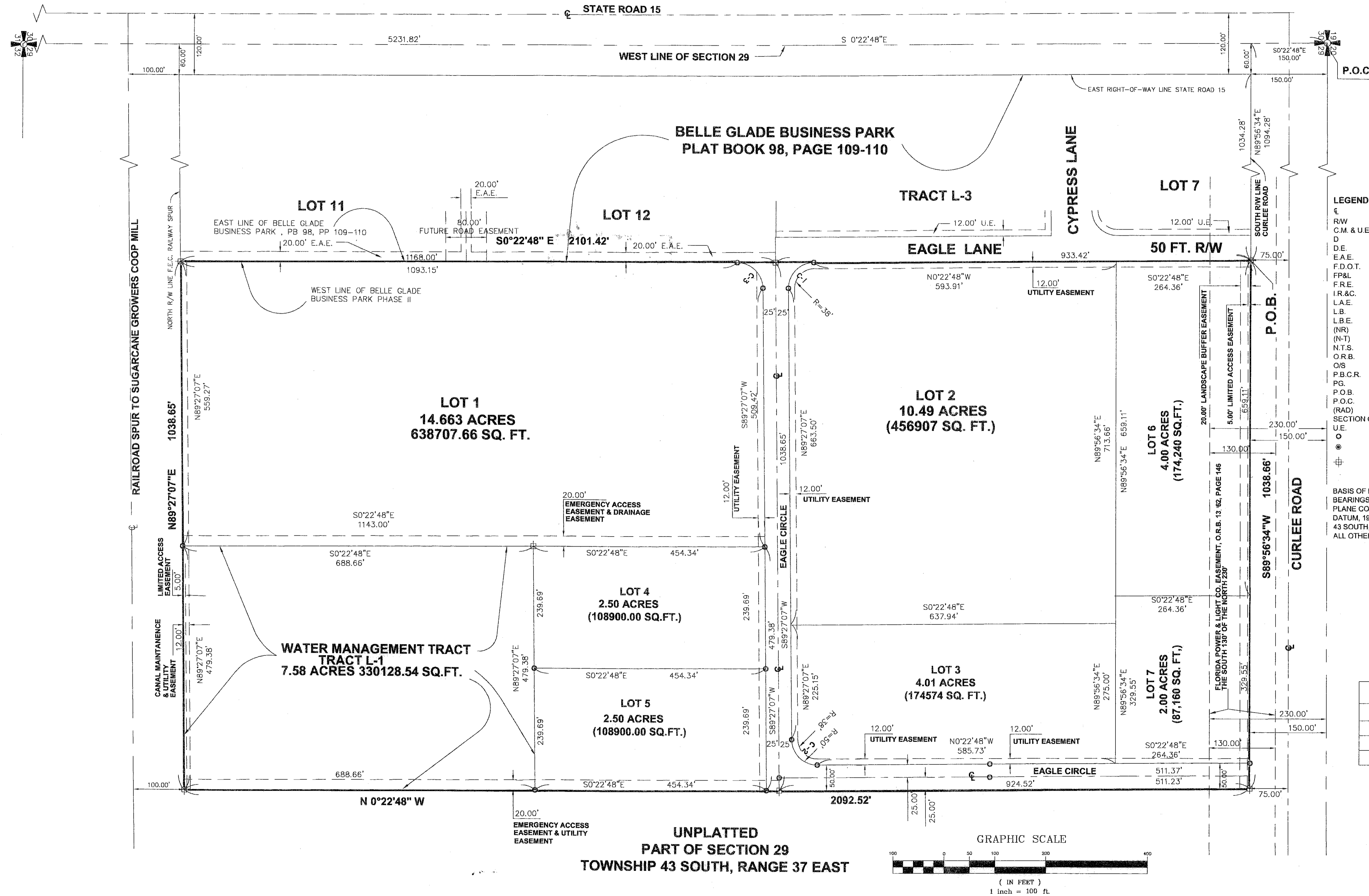
BEING A REPLAT OF BELLE GLADE BUSINESS PARK PHASE II,  
 AS RECORDED IN PLAT BOOK 105, PAGES 79-80,  
 PUBLIC RECORDS OF PALM BEACH COUNTY, FLORIDA,  
 AND A PORTION OF THE NORTHWEST QUARTER  
 OF SECTION 29 TOWNSHIP 43 SOUTH, RANGE 37 EAST,  
 CITY OF BELLE GLADE,  
 PALM BEACH COUNTY, FLORIDA  
 SEPTEMBER 2006

106

STATE OF FLORIDA  
 COUNTY OF PALM BEACH  
 THIS PLAT WAS FILED FOR  
 RECORD AT  
 THIS DAY OF  
 2006 AND DULY RECORDED IN  
 PLAT BOOK No.  
 ON PAGES

SHARON R. BOCK  
 CLERK OF THE CIRCUIT COURT

BY: DEPUTY CLERK



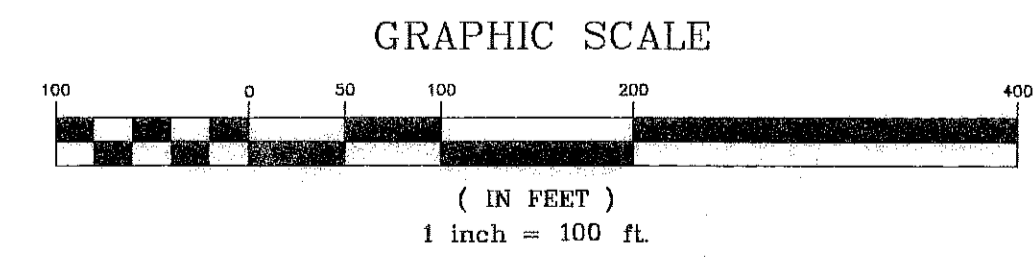
**LEGEND**

Symbol	Description
CL	CENTER LINE
R/W	RIGHT-OF-WAY
C.M. & U.E.	CANAL MAINTENANCE & UTILITY EASEMENT
D	DESCRIPTION
D.E.	DRAINAGE EASEMENT
E.A.E.	EMERGENCY ACCESS EASEMENT
F.D.O.T.	FLORIDA DEPARTMENT OF TRANSPORTATION
FP&L	FLORIDA POWER AND LIGHT COMPANY
F.R.E.	FUTURE ROADWAY EASEMENT
I.R.&C.	IRON ROD AND CAP
L.A.E.	LIMITED ACCESS EASEMENT
L.B.	LICENSED BUSINESS
L.B.E.	LANDSCAPE BUFFER EASEMENT
(NR)	NOT RADIAL
(N-T)	NON-TANGENT
N.T.S.	NOT TO SCALE
O.R.B.	OFFICIAL RECORDS BOOK
O/S	OFFSET
P.B.C.R.	PALM BEACH COUNTY RECORD
PG	PAGE
P.O.B.	POINT OF BEGINNING
P.O.C.	POINT OF COMMENCEMENT
(RAD)	RADIAL
SECTION O-O-O	SECTION-TOWNSHIP-RANGE
U.E.	UTILITY EASEMENT
○	SET 5/8" IRON ROD AND CAP (L.B. 3411)
●	SET PERMANENT CONTROL POINT (L.B. 3411)
⊕	SET PERMANENT REFERENCE MONUMENT (L.B. 3411)

**BASIS OF BEARINGS:**  
 BEARINGS SHOWN HEREON ARE GRID BEARINGS OF THE FLORIDA STATE PLANE COORDINATE SYSTEM EAST ZONE ON THE 1983 NORTH AMERICAN DATUM, 1998 ADJUSTMENT. THE WEST LINE OF SECTION 29, TOWNSHIP 43 SOUTH, RANGE 37 EAST BEARS SOUTH 0°22'48" EAST AND ALL OTHER BEARINGS ARE RELATIVE THERETO.

**CURVE TABLE**

CURVE	LENGTH	RADIUS	CENTRAL ANGLE
C-1	78.69'	50.00'	90°10'05"
C-2	78.39'	50.00'	89°49'55"
C-3	78.39'	50.00'	89°49'55"



**UNPLATTED PART OF SECTION 29 TOWNSHIP 43 SOUTH, RANGE 37 EAST**

**PAG SURVEYORS, INC. LB 3411**  
 1016 SOUTHEAST 4TH STREET  
 BELLE GLADE, FL 33430

**NOTICE:**  
 This plat as recorded in its graphic form, is the official depiction of the subdivided lands described herein and will in no circumstances be supplanted in authority by any other graphic or digital form of the plat.  
 There may be additional restrictions that are not recorded in this plat that may be found in the public records of this county.