

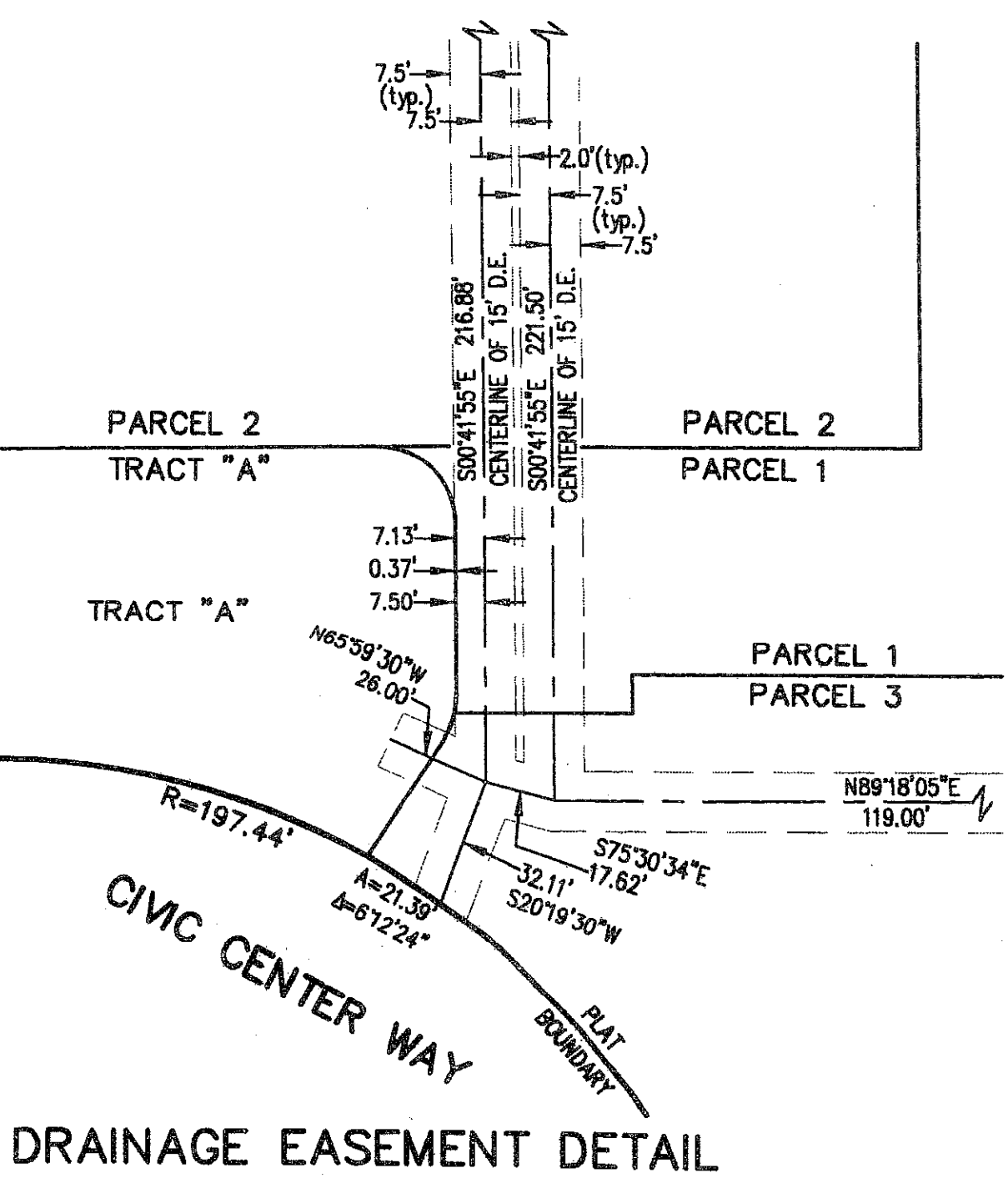
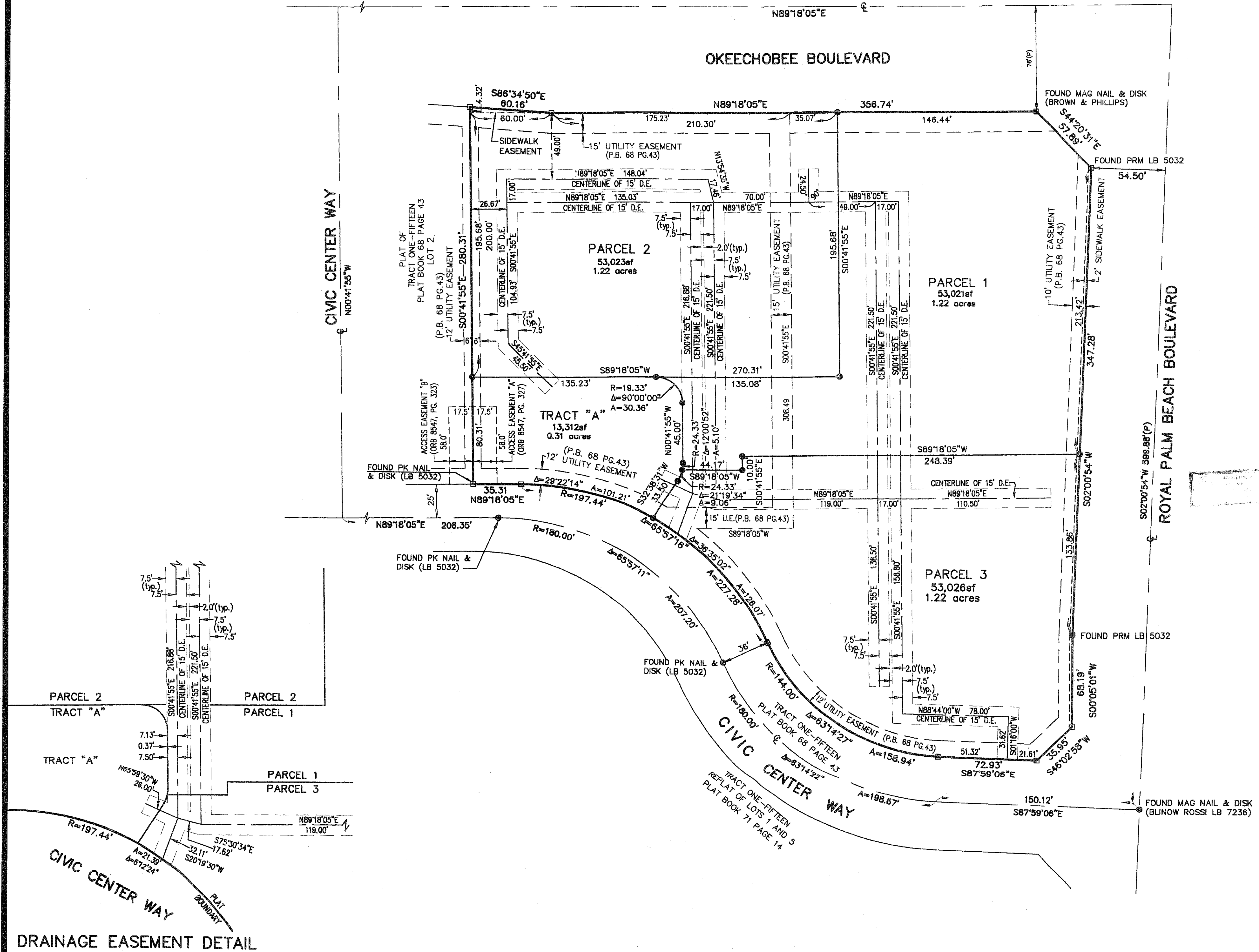
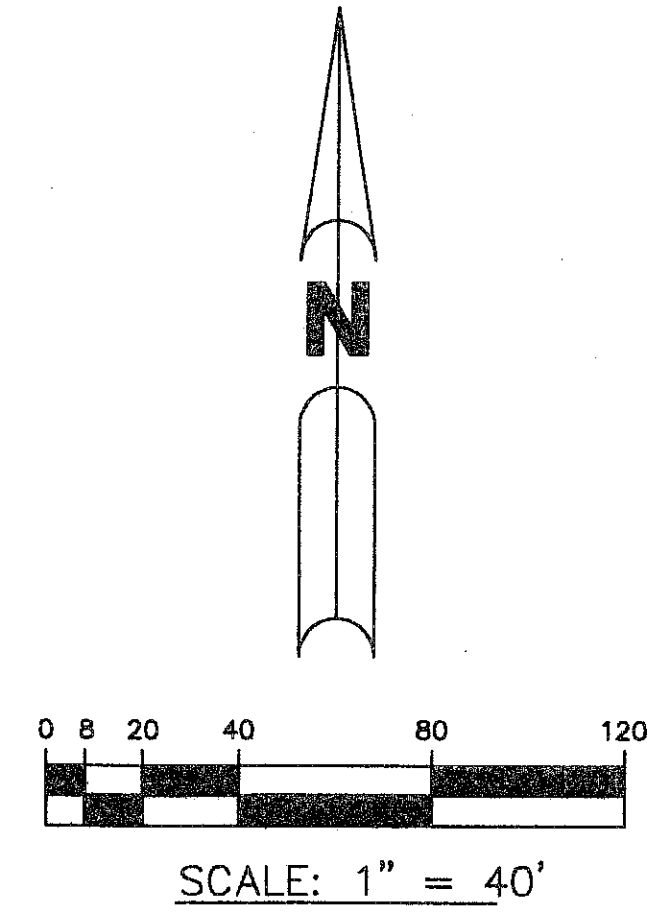
THIS INSTRUMENT WAS PREPARED BY
 JOHN E. PHILLIPS III, P.S.M. 4826
BROWN & PHILLIPS, INC.
 CERTIFICATE OF AUTHORIZATION # LB 6473
 901 NORTHPOINT PKWY., SUITE 305
 ROYAL PALM BEACH, FLORIDA 33407
 561-615-3988, 615-3986 FAX

VILLAGE CENTER AT ROYAL PALM BEACH

BEING A REPLAT OF LOTS 3, 4, AND TRACT "A", TRACT ONE-FIFTEEN, ACCORDING TO THE PLAT THEREOF,
 AS RECORDED IN PLAT BOOK 68, PAGES 43 AND 44 OF THE PUBLIC RECORDS OF PALM BEACH COUNTY, FLORIDA
 LYING IN THE NORTHWEST 1/4 OF SECTION 26, TOWNSHIP 43 SOUTH, RANGE 41 EAST,
 VILLAGE OF ROYAL PALM BEACH, FLORIDA

SHEET 2 OF 2 SEPTEMBER, 2006

115



- ABBREVIATIONS**
- R/W - RIGHT-OF-WAY
 - PRM - PERMANENT REFERENCE MONUMENT
 - PCP - PERMANENT CONTROL POINT
 - R - RADIUS
 - Δ - CENTRAL ANGLE
 - A - ARC LENGTH
 - P.B. - PLAT BOOK
 - O.R.B. - OFFICIAL RECORD BOOK
 - ℄ - CENTERLINE
 - (P) - PLAT BEARING OR DISTANCE
 - (M) - MEASURED BEARING OR DISTANCE
 - FND. - FOUND
 - CONC. - CONCRETE
 - U.E. - UTILITY EASEMENT
 - D.E. - DRAINAGE EASEMENT
 - (typ.) - TYPICAL DIMENSION