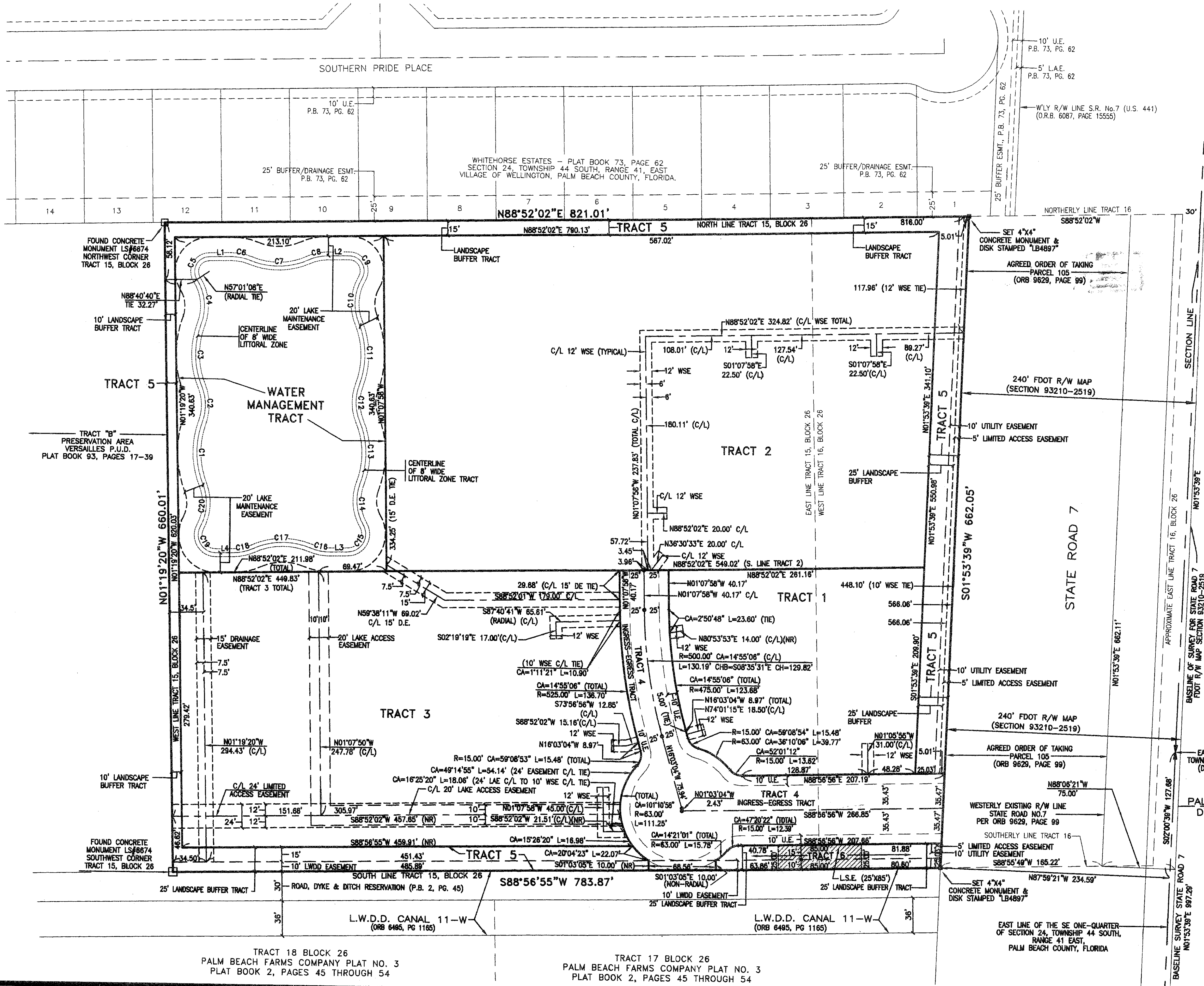
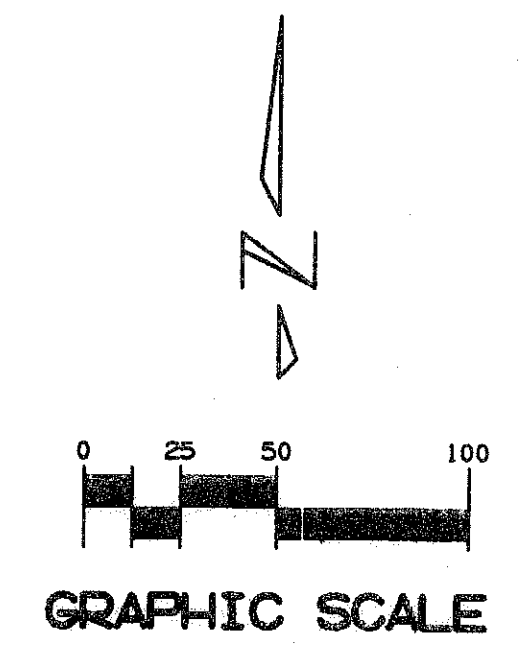


PALOMINO EXECUTIVE PARK

BEING A REPLAT OF TRACT 15 AND A PORTION OF TRACT 16, BLOCK 26, PALM BEACH FARMS COMPANY PLAT NO. 3,
 ACCORDING TO THE PLAT THEREOF, AS RECORDED IN PLAT BOOK 2, PAGES 45 THROUGH 54
 OF THE PUBLIC RECORDS OF PALM BEACH COUNTY, FLORIDA AND LYING IN
 SECTION 24, TOWNSHIP 44 SOUTH, RANGE 41 EAST,
 VILLAGE OF WELLINGTON, PALM BEACH COUNTY, FLORIDA

117



CENTERLINE LITTORAL ZONE TRACT DATA

CURVE TABLE		
CURVE	LENGTH	RADIUS
C1	65.88'	90.57'
C2	36.91'	50.00'
C3	64.90'	86.48'
C4	46.57'	50.00'
C5	31.90'	15.00'
C6	20.18'	50.00'
C7	60.54'	75.00'
C8	20.18'	50.00'
C9	32.40'	15.30'
C10	46.11'	50.00'
C11	64.90'	86.48'
C12	37.52'	50.00'
C13	64.90'	86.48'
C14	44.30'	50.00'
C15	37.48'	18.00'
C16	20.18'	50.00'
C17	60.54'	75.00'
C18	20.18'	50.00'
C19	37.47'	18.00'
C20	43.74'	50.00'

LINE TABLE		
LINE	LENGTH	BEARING
L1	22.37'	N88°52'01"E
L2	22.11'	N88°52'01"E
L3	18.56'	S88°52'03"W
L4	18.28'	S88°52'03"W

- LEGEND**
- R = RADIUS
 - CA = CENTRAL ANGLE
 - L = ARC LENGTH
 - CHB = CHORD BEARING
 - CH = CHORD
 - L.W.D.D. = LAKE WORTH DRAINAGE DISTRICT
 - FDOT = FLORIDA DEPARTMENT OF TRANSPORTATION
 - R/W = RIGHT-OF-WAY
 - ORB = OFFICIAL RECORDS BOOK
 - C/L = CENTERLINE
 - U.E. = UTILITY EASEMENT
 - D.E. = DRAINAGE EASEMENT
 - WSE = WATER AND SEWER EASEMENT
 - LSE = LIFT STATION EASEMENT
 - L.A.E. = LIMITED ACCESS EASEMENT
 - O.S.T. = OPEN SPACE TRACT
 - P.U.D. = PLANNED UNIT DEVELOPMENT
 - P.B. = PLAT BOOK
 - PG. = PAGE
 - NR = NON-RADIAL
 - = SET PERMANENT REFERENCE MONUMENT
 - = 4"x4" CONCRETE MONUMENT WITH DISK STAMPED "PRM LB 4897"
 - ⊙ = SET PERMANENT CONTROL POINT PK NAIL AND WASHER STAMPED "PCP LB 4897"

Keshavarz & Associates, Inc.
 CONSULTING ENGINEERS - SURVEYORS
 711 N. Dixie Highway, Suite 201
 West Palm Beach, Florida 33401
 Tel: (561) 689-8600 Fax: (561) 689-7476 LB 4897
 THIS INSTRUMENT WAS PREPARED BY MICHAEL K. HORAN SR., PSM
 PROFESSIONAL SURVEYOR AND MAPPER NO. 5494
 IN THE OFFICE OF KESHAVARZ & ASSOCIATES, INC.
2/10/06 786 10 01/05/06 441 PROPERTY/PLAT/005_PLAT.DWG 3/22/2006 11:04:46 AM EST