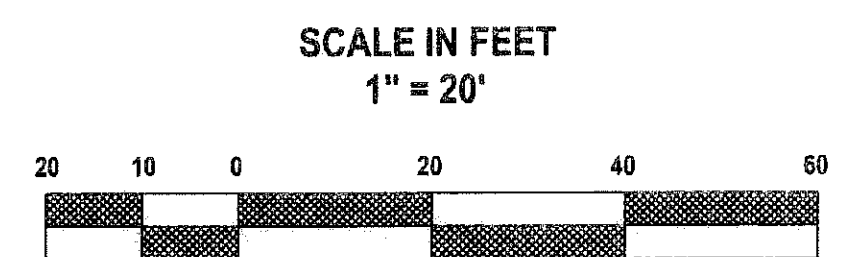
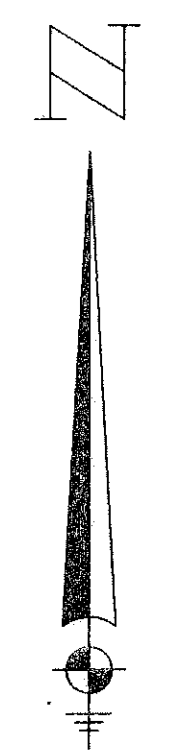
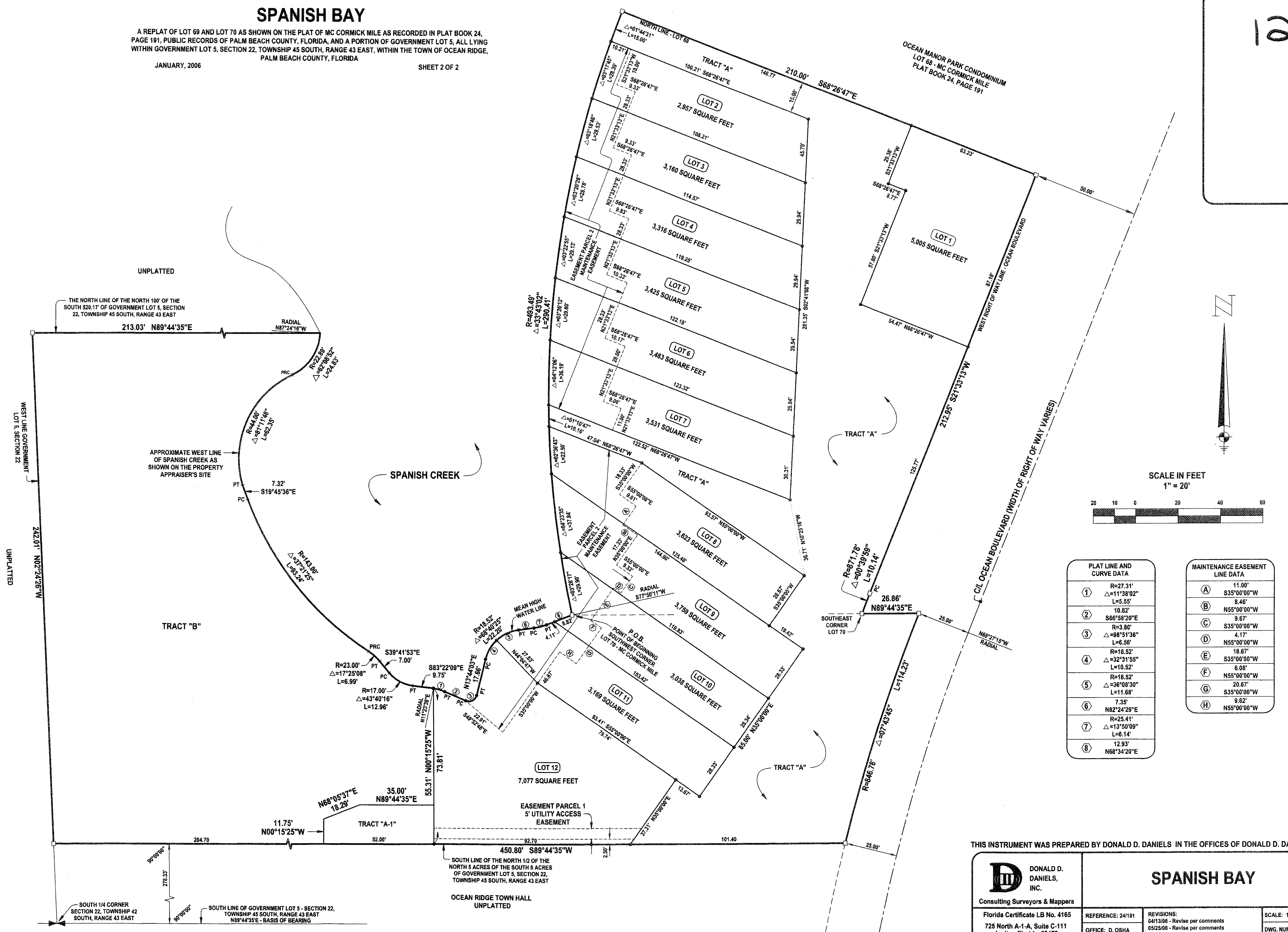


SPANISH BAY

A REPLAT OF LOT 69 AND LOT 70 AS SHOWN ON THE PLAT OF MC CORMICK MILE AS RECORDED IN PLAT BOOK 24, PAGE 191, PUBLIC RECORDS OF PALM BEACH COUNTY, FLORIDA, AND A PORTION OF GOVERNMENT LOT 5, ALL LYING WITHIN GOVERNMENT LOT 5, SECTION 22, TOWNSHIP 45 SOUTH, RANGE 43 EAST, WITHIN THE TOWN OF OCEAN RIDGE, PALM BEACH COUNTY, FLORIDA

JANUARY, 2006

SHEET 2 OF 2



PLAT LINE AND CURVE DATA	
①	R=27.31' Δ=11°38'02" L=5.55'
②	R=10.82' Δ=86°58'20"E L=6.58'
③	R=3.80' Δ=88°51'36" L=6.58'
④	R=18.52' Δ=32°31'55" L=10.52'
⑤	R=18.52' Δ=36°08'30" L=11.68'
⑥	R=7.35' Δ=82°24'28"E L=6.14'
⑦	R=25.41' Δ=13°50'09" L=6.14'
⑧	R=11.00' Δ=8°46' L=5.55'

MAINTENANCE EASEMENT LINE DATA	
A	11.00' S35°00'00"W
B	8.46' N55°00'00"W
C	9.67' S35°00'00"W
D	4.17' N55°00'00"W
E	18.87' S35°00'00"W
F	6.08' N55°00'00"W
G	20.67' S35°00'00"W
H	9.62' N55°00'00"W

THIS INSTRUMENT WAS PREPARED BY DONALD D. DANIELS IN THE OFFICES OF DONALD D. DANIELS, INC.

<p>DONALD D. DANIELS, INC. Consulting Surveyors & Mappers</p>	<h2>SPANISH BAY</h2>	
	<p>Florida Certificate LB No. 4165 725 North A-1-A, Suite C-111 Jupiter, Florida 33477 Tel: (561) 747-9894</p>	<p>REFERENCE: 24/191 OFFICE: D. OSHA CHECKED: DDD</p>