

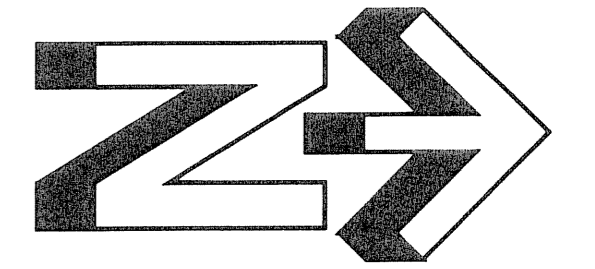
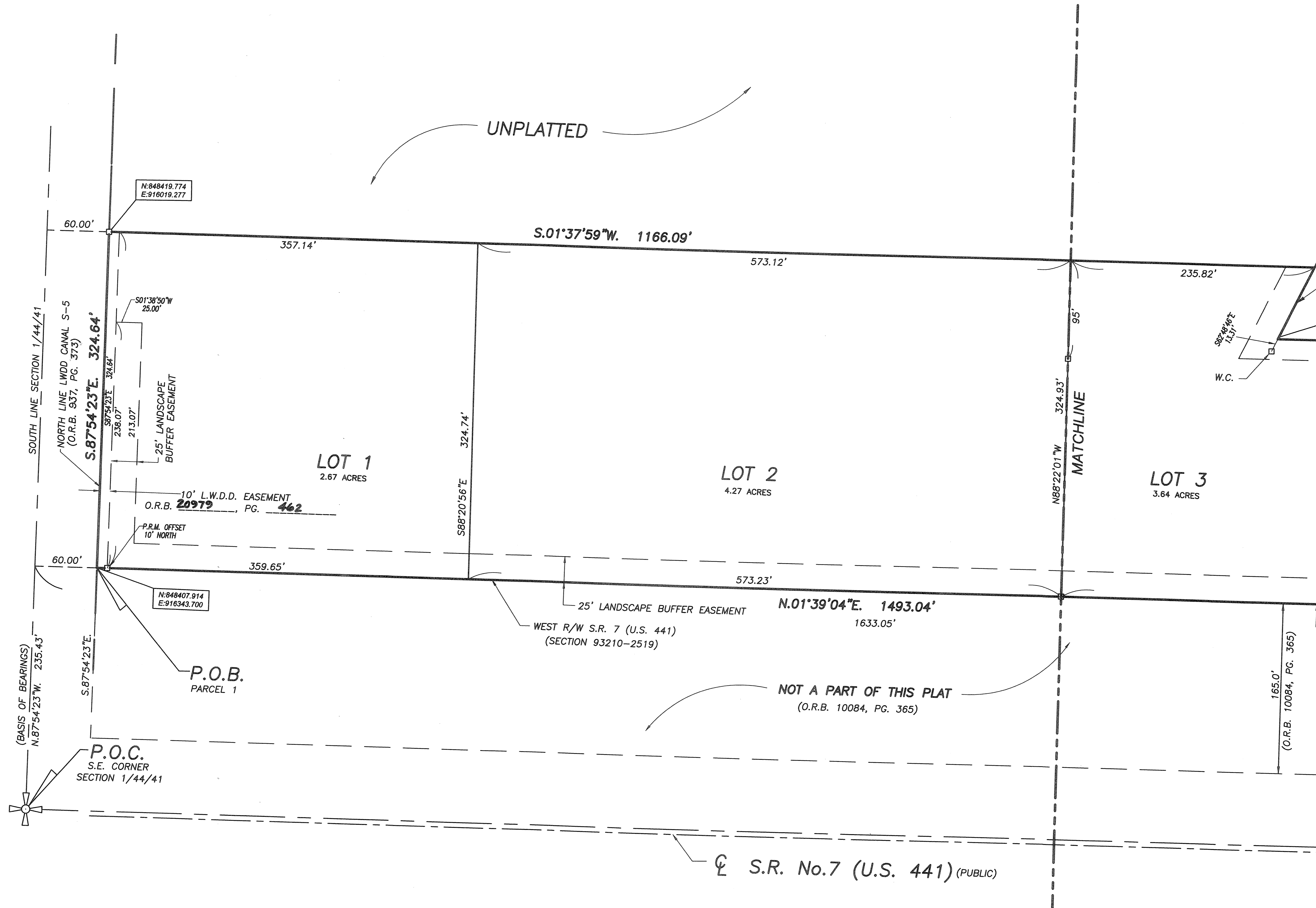
ANTHONY GROVES PLAZA

135

BEING A PARCEL OF LAND LYING IN THE EAST HALF (1/2) OF SECTION 1, TOWNSHIP 44 SOUTH, RANGE 41 EAST, VILLAGE OF ROYAL PALM BEACH, PALM BEACH COUNTY, FLORIDA

AUGUST, 2006

SHEET 3 OF 4



ABBREVIATIONS AND SYMBOLS

1. = Denotes Set Permanent Reference Monuments (P.R.M.'s). Stamped P.R.M. L.S. # 3357.
2. = Centerline.
3. R/W = Right of Way
4. P.B. = Plat Book.
5. P.G.(S) = Pages.
6. SEC. = Section.
7. TWP. = Township.
8. RGE. = Range.
9. U.E. = Utility Easement.
10. D.E. = Drainage Easement.
11. D.B. = Deed Book
12. A = Arc Length.
13. Δ = Central Angle.
14. R = Radius.
15. C.B. = Chord Bearing.
16. O.R.B. = Official Record Book.
17. R.P.B. = Road Plat Book.
18. L.A.E. = Limited Access Easement.
19. P.O.C. = Point of Commencement.
20. P.O.B. = Point of Beginning.
21. P.B.C. = Palm Beach County.
22. F.N.D. = Found.
23. ESM'T = Easement
24. W'y = Westerly
25. F.P.L. = Florida Power and Light
26. S.S.E. = Safe Sight Easement
26. N = Northing
26. E = Easting
27. S = Survey
28. D = Deed
29. W.C. = Witness corner

ANTHONY GROVES PLAZA

WALLACE SURVEYING
CORP. LICENSED SURVEYOR # 4590
3535 VILLAGE BOULEVARD, WEST PALM BEACH, FLORIDA 33407 * (561) 840-4591

FIELD:	JOB NO.: 04-1396D	F.B. PG.
OFFICE: K.S.	DATE: AUG, 2006	DWG. NO. 04-1396-1
CHKD: C.W.	REF: 04-1396-1.DWG	SHEET 3 OF 4

☪ S.R. No.7 (U.S. 441) (PUBLIC)