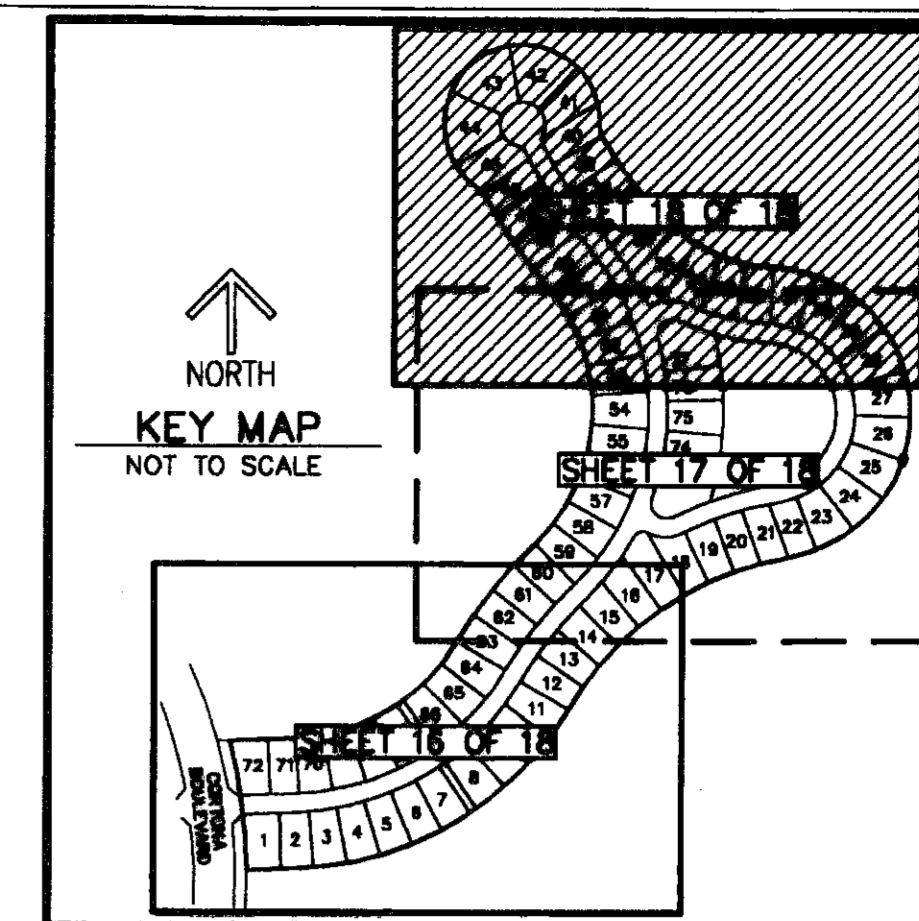


JUPITER COUNTRY CLUB

A PLANNED UNIT DEVELOPMENT
 LYING IN SECTIONS 5, 6, 8 AND 9, TOWNSHIP 41 SOUTH, RANGE 42 EAST,
 TOWN OF JUPITER, PALM BEACH COUNTY, FLORIDA

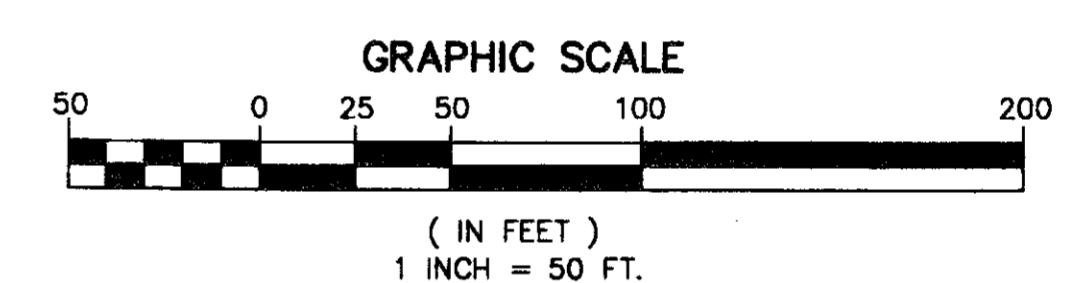
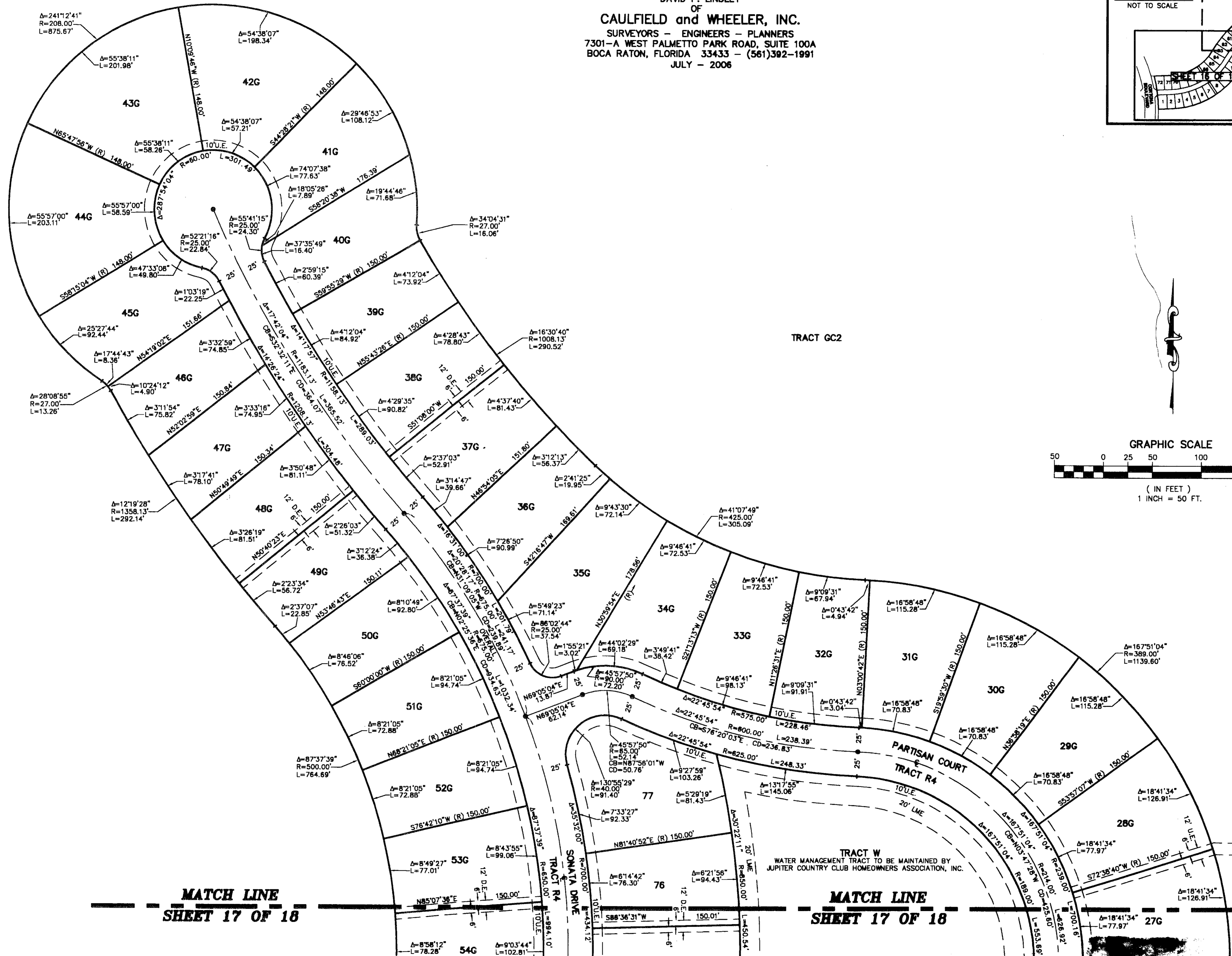
THIS INSTRUMENT PREPARED BY
 DAVID P. LINDLEY
 OF
CAULFIELD and WHEELER, INC.
 SURVEYORS - ENGINEERS - PLANNERS
 7301-A WEST PALMETTO PARK ROAD, SUITE 100A
 BOCA RATON, FLORIDA 33433 - (561)392-1991
 JULY - 2006



181

STATE OF FLORIDA
 COUNTY OF PALM BEACH
 THIS PLAT WAS FILED FOR
 RECORD AT _____ M.
 THIS _____ DAY OF _____
 A.D. 2006 AND DULY RECORDED
 IN PLAT BOOK _____ ON
 PAGES _____ AND _____
 SHARON R. BOCK
 CLERK AND COMPTROLLER
 BY: _____
 DEPUTY CLERK

SHEET 18 OF 18



TRACT GC2

TRACT GC2

TRACT W
 WATER MANAGEMENT TRACT TO BE MAINTAINED BY
 JUPITER COUNTRY CLUB HOMEOWNERS ASSOCIATION, INC.

MATCH LINE
SHEET 17 OF 18

MATCH LINE
SHEET 17 OF 18

MATCH LINE
SHEET 17 OF 18