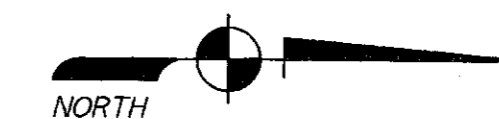


# PREMIER PARK OF COMMERCE

BEING A PORTION OF SECTION 2, TOWNSHIP 43 SOUTH, RANGE 42 EAST,  
CITY OF WEST PALM BEACH, PALM BEACH COUNTY, FLORIDA.

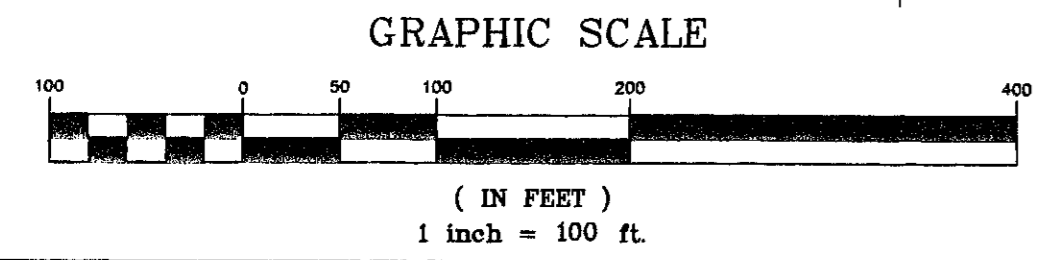
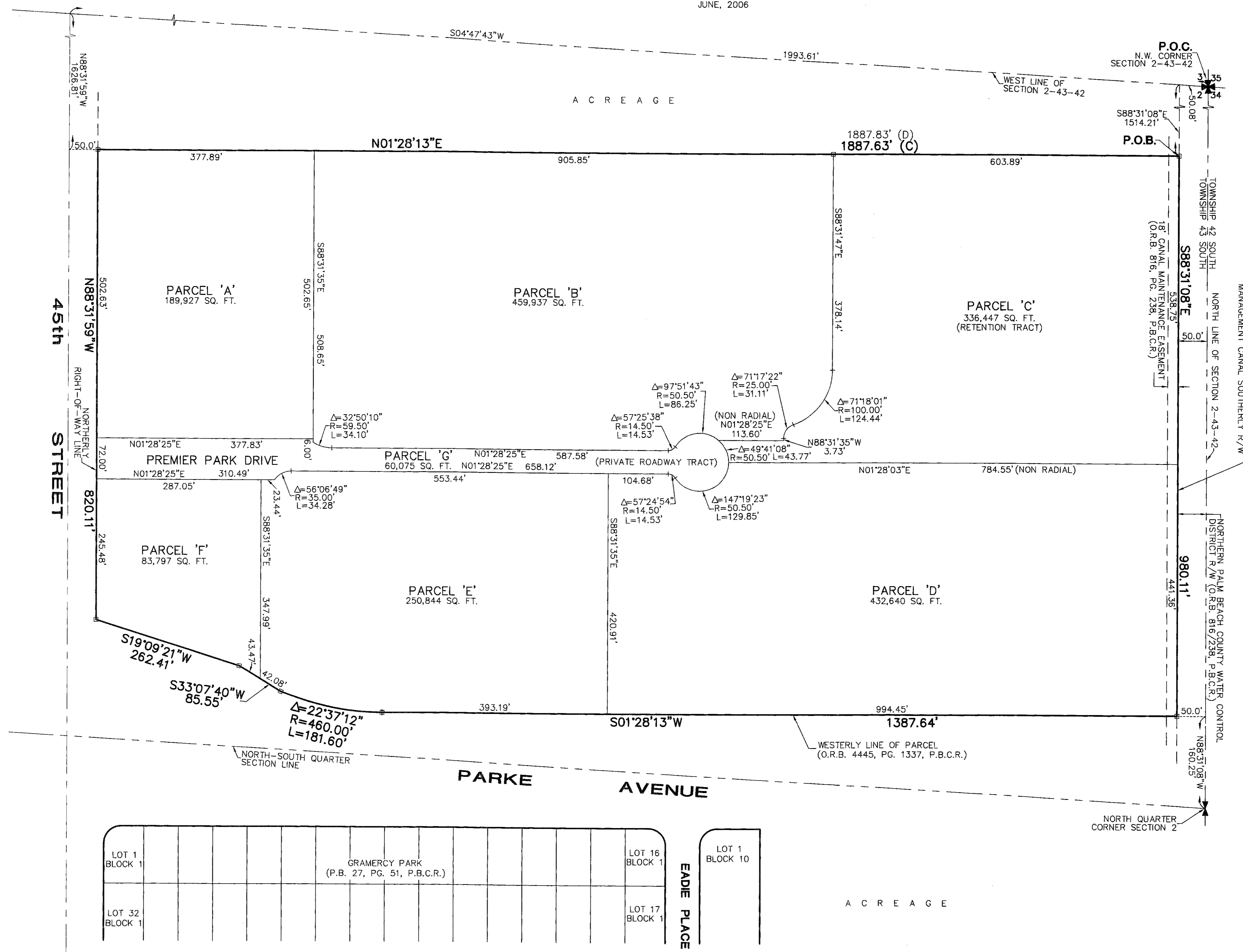
THIS INSTRUMENT WAS PREPARED BY:  
JOHN T. DOOGAN, P.L.S.  
**AVIROM & ASSOCIATES, INC.**  
SURVEYING & MAPPING  
50 S.W. 2nd AVENUE, SUITE 102  
BOCA RATON, FLORIDA 33432  
(561) 392-2594  
JUNE, 2006



187

STATE OF FLORIDA  
COUNTY OF PALM BEACH  
This plat was filed for record  
at \_\_\_\_\_ this \_\_\_\_\_  
day of \_\_\_\_\_, 2006,  
and duly recorded in Plat Book  
\_\_\_\_\_, Pages \_\_\_\_\_, through  
\_\_\_\_\_.  
  
SHARON R. BOCK  
Clerk & Comptroller  
By: \_\_\_\_\_ D.C.

SHEET 2 OF 2



**NOTICE:**  
THIS PLAT, AS RECORDED IN ITS GRAPHIC FORM, IS THE OFFICIAL DEPICTION OF THE SUBDIVIDED LANDS DESCRIBED HEREIN AND WILL IN NO CIRCUMSTANCES BE SUPPLANTED IN AUTHORITY BY ANY OTHER GRAPHIC OR DIGITAL FORM OF THE PLAT. THERE MAY BE ADDITIONAL RESTRICTIONS THAT ARE NOT RECORDED ON THIS PLAT, THAT MAY BE FOUND IN THE PUBLIC RECORDS OF PALM BEACH COUNTY, FLORIDA.