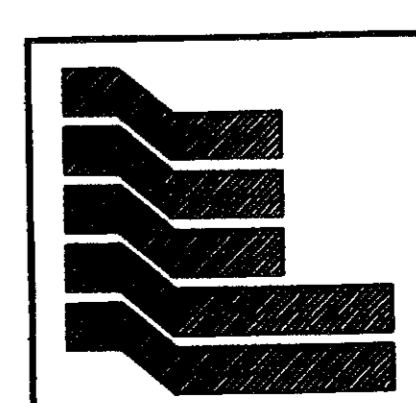
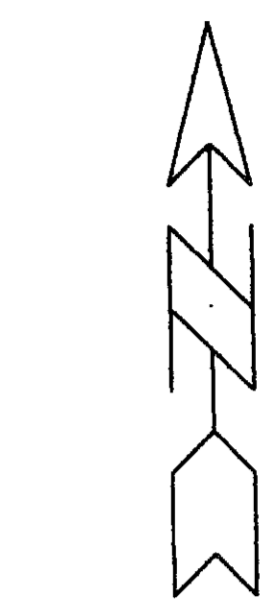
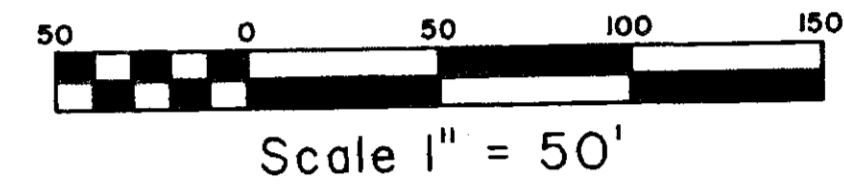
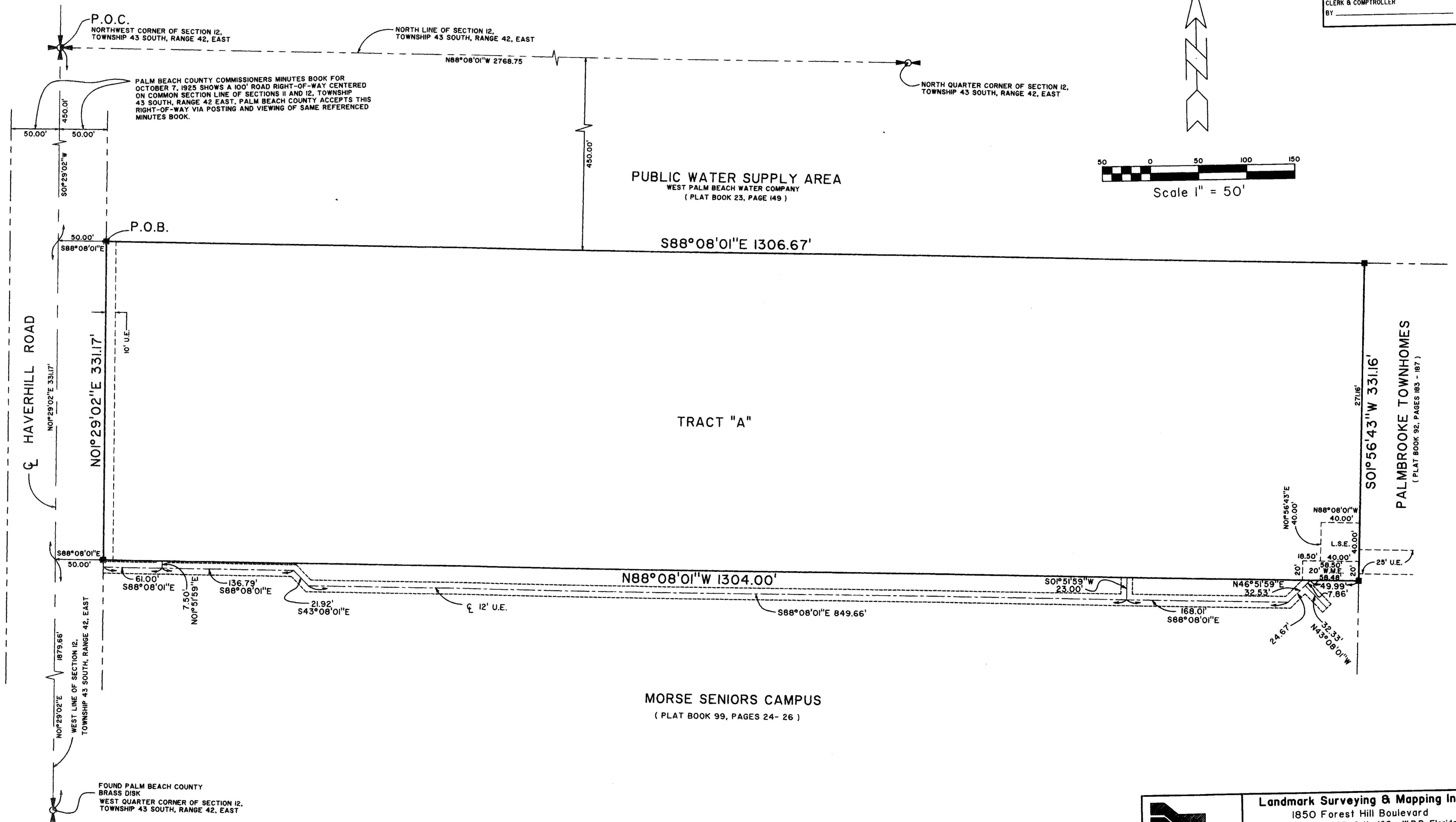


CHILDREN'S PLACE AT HOME SAFE

BEING A PORTION OF SECTION 12, TOWNSHIP 43 SOUTH, RANGE 42 EAST,
CITY OF WEST PALM BEACH, PALM BEACH COUNTY, FLORIDA.
SHEET 2 OF 2

STATE OF FLORIDA SS
COUNTY OF PALM BEACH
THIS PLAT WAS FILED FOR RECORD AT _____
M. THIS DAY OF 2006
AND DULY RECORDED IN PLAT BOOK NO. _____
ON PAGE _____
SHARON R. BOCK
CLERK & COMPTROLLER
BY _____ D.C.



Landmark Surveying & Mapping Inc.
 1850 Forest Hill Boulevard
 Ph. (561) 433-5405 Suite 100 W.P.B. Florida
 LB # 4396

CHILDREN'S PLACE AT HOME SAFE