

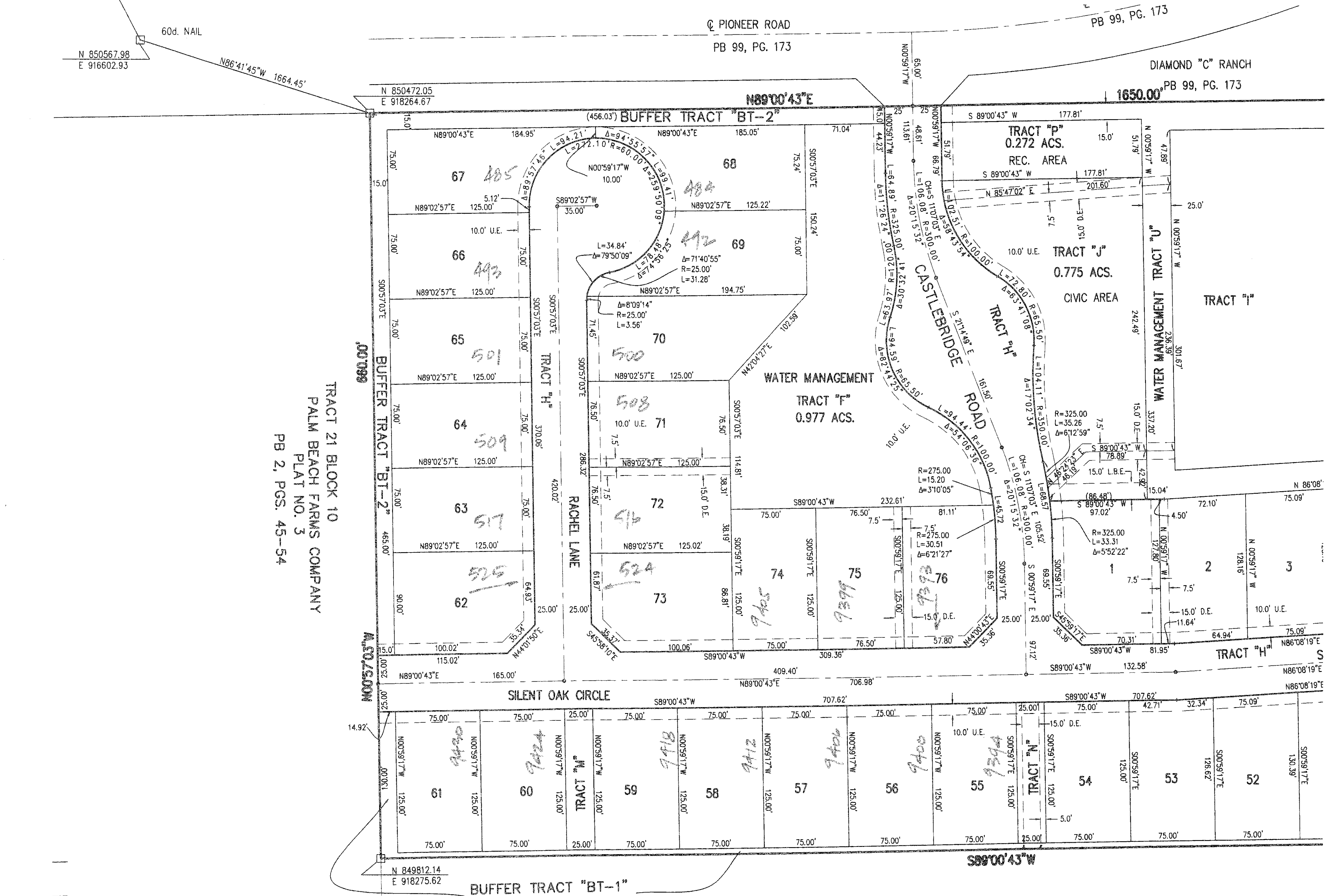
PBC. CONTROL POINT
"PACKER"
N 853785.74
E 914106.78

PIONEER TRAIL, A P.U.D.

Being a replat of Tracts 22, 23, and the East Half of Tract 21, Block 10, together with Tract 25 and the East 232.4 feet of Tract 26, Block 10, all of Palm Beach Farms Co. Plat No. 3, as recorded in Plat Book 2, Pages 45 through 54, Public Records of Palm Beach County, Florida, and lying in Section 6, Township 44 South, Range 42 East, Palm Beach County, Florida.

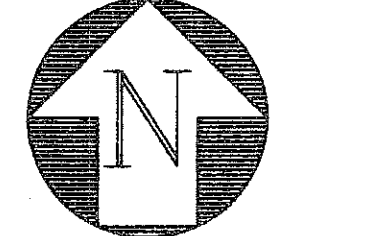
SHEET 4 OF 4
JUNE 2006

4



TRACT 21 BLOCK 10
PALM BEACH FARMS COMPANY
PLAT NO. 3
PB 2, PGS. 45-54

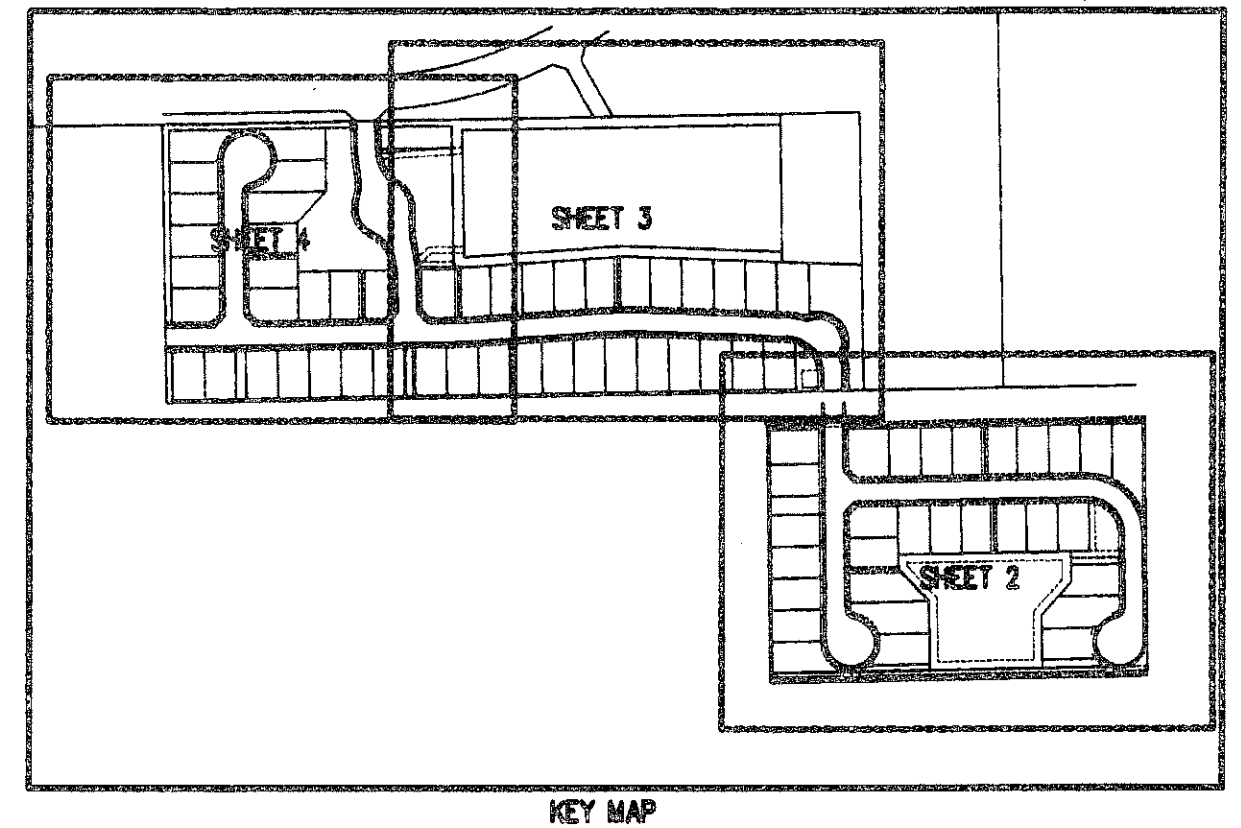
SEE SHEET 3



GRAPHIC SCALE
0 50 75 100
SCALE: 1"=50'

LEGEND

- U.E. = UTILITY EASEMENT
- D.E. = DRAINAGE EASEMENT
- = DENOTES PERMANENT REFERENCE MONUMENT SET.
- = DENOTES PERMANENT CONTROL POINT.
- CH = CHORD
- R = RADIUS
- L = ARC LENGTH
- Δ = CENTRAL ANGLE
- (N.R.) = NON-RADIAL
- O.R.B. = OFFICIAL RECORD BOOK
- PG. = PAGE
- L.M.E. = LAKE MAINTENANCE EASEMENT
- L.B.E. = LANDSCAPE BUFFER EASEMENT
- L.S.E. = LIFT STATION EASEMENT
- P.B.C.U.E. = PALM BEACH COUNTY UTILITY EASEMENT
- L.M.A.E. = LAKE MAINTENANCE ACCESS EASEMENT



PROPOSED PIONEER TRAIL
BLOCK 10
TRACT 21
PLAT NO. 3
P.B.C. 45-54
DATE 06/12/2006
DRAWN BY G. RAYMAN
CHECKED BY G. RAYMAN

Y:\Land Projects\22\4017.01\dwg\401701Plat.dwg 12:26:55 PM EST

PIONEER TRAIL, A P.U.D.

Engineers • Surveyors • Mappers

DATE	06/12/2006
SCALE	1" = 50'
CAD FILE	4017.01.dwg
SDSK PROJECT	4017
DRAWN	SFRN STAFF
CHECKED	G. RAYMAN

SHEET 4/4
JOB NO. 04017.01

1201 BELLEVUE ROAD, WEST PALM BEACH, FLORIDA 33405
PH (561) 855-1151 • FAX (561) 852-9390 • WWW.SFRNINC.COM