

# CANTERBURY PLACE - REPLAT

BEING A REPLAT OF LOTS 147 THORUGH 154 AND TRACT N-18, CANTERBURY PLACE,  
AS RECORDED IN PLAT BOOK 104, PAGES 54 THROUGH 65,  
OF THE PUBLIC RECORDS OF PALM BEACH COUNTY, FLORIDA  
LYING IN SECTION 13, TOWNSHIP 41 SOUTH, RANGE 42 EAST  
TOWN OF JUPITER, PALM BEACH COUNTY, FLORIDA

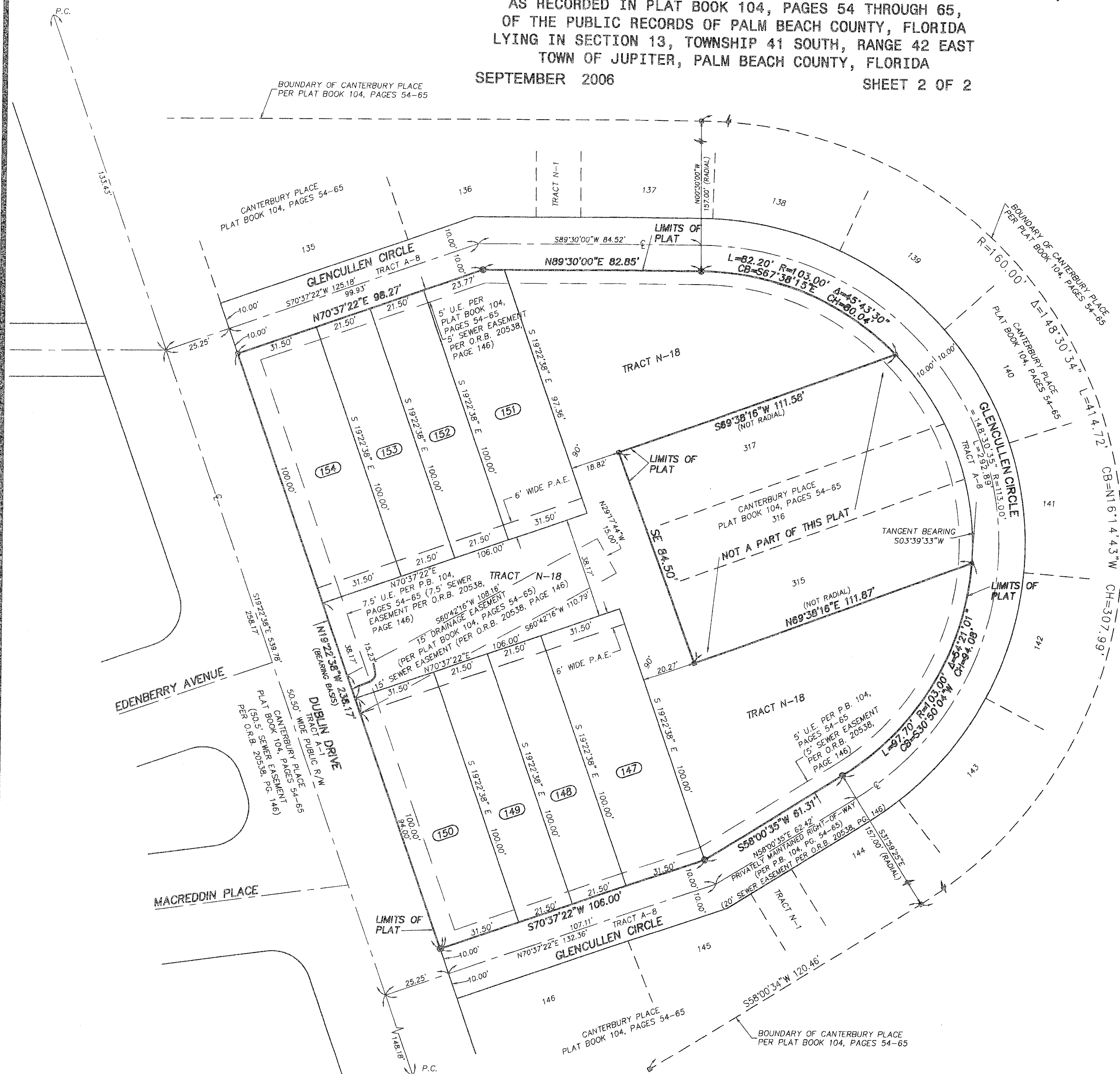
SEPTEMBER 2006

SHEET 2 OF 2

12

COUNTY OF PALM BEACH )  
STATE OF FLORIDA )  
This Plat was filed for record on \_\_\_\_\_ day of \_\_\_\_\_, 20\_\_\_\_,  
and duly recorded in Plat Book No. \_\_\_\_\_  
on page(s) \_\_\_\_\_  
SHARON R. BOOK, Clerk of Circuit Court  
by \_\_\_\_\_ D.C.

0' 10' 20' 40'  
1 INCH = 20 FEET



### LEGEND & ABBREVIATIONS

- (R) RADIAL
- (NR) NOT-RADIAL
- C CENTERLINE
- R RADIUS
- L ARC LENGTH
- Δ DELTA (CENTRAL ANGLE)
- CB CHORD BEARING
- CH CHORD LENGTH
- LB CERTIFICATE OF AUTHORIZATION
- NO. NUMBER
- P.S.M. PROFESSIONAL SURVEYOR & MAPPER
- P.B. PLAT BOOK
- O.R.B. OFFICIAL RECORD BOOK
- P.C. PAGE
- REC RECOVERED / FOUND
- U.E. UTILITY EASEMENT
- D.E. DRAINAGE EASEMENT
- P.D.E. PUBLIC DRAINAGE EASEMENT
- HATCHED THUS: -----
- L.A.E. LIMITED ACCESS EASEMENT
- P.S.E. PUBLIC SIDEWALK EASEMENT
- P.A.E. PEDESTRIAN ACCESS EASEMENT
- S.S.E. SAFE SIGHT EASEMENT
- W.M.M.E. WATER MANAGEMENT MAINTENANCE EASEMENT
- P.R.M. PERMANENT REFERENCE MONUMENT
- 4"x4" CONCRETE MONUMENT WITH NAIL & DISK STAMPED "P.R.M. LB 1221"
- ⊙ NAIL & DISK STAMPED "P.R.M. LB 1221"
- P.C.P. PERMANENT CONTROL POINT
- ⊙ NAIL & DISK STAMPED "P.C.P. LB 1221"

### NORTHERN PALM BEACH COUNTY IMPROVEMENT DISTRICT (UNIT 88)

#### "AREA TABULATIONS"

LOT #	ACREAGE	LAND USE
TRACT N-18	0.444	EXZ
LOT 147	0.072	REZ
LOT 148	0.049	REZ
LOT 149	0.049	REZ
LOT 150	0.072	REZ
LOT 151	0.072	REZ
LOT 152	0.049	REZ
LOT 153	0.049	REZ
LOT 154	0.072	REZ
TOTAL	0.928	

EXZ = EXEMPT ACREAGE  
REZ = RESIDENTIAL

**BOWYER-SINGLETON & ASSOCIATES, INCORPORATED**

ENGINEERING • PLANNING • SURVEYING • ENVIRONMENTAL  
901 NORTHPOINT PARKWAY, SUITE 204 WEST PALM BEACH, FL 33407  
561-683-7101 • FAX 561-683-7102 • L.B. NO. 1221