

TARQUINO ESTATES

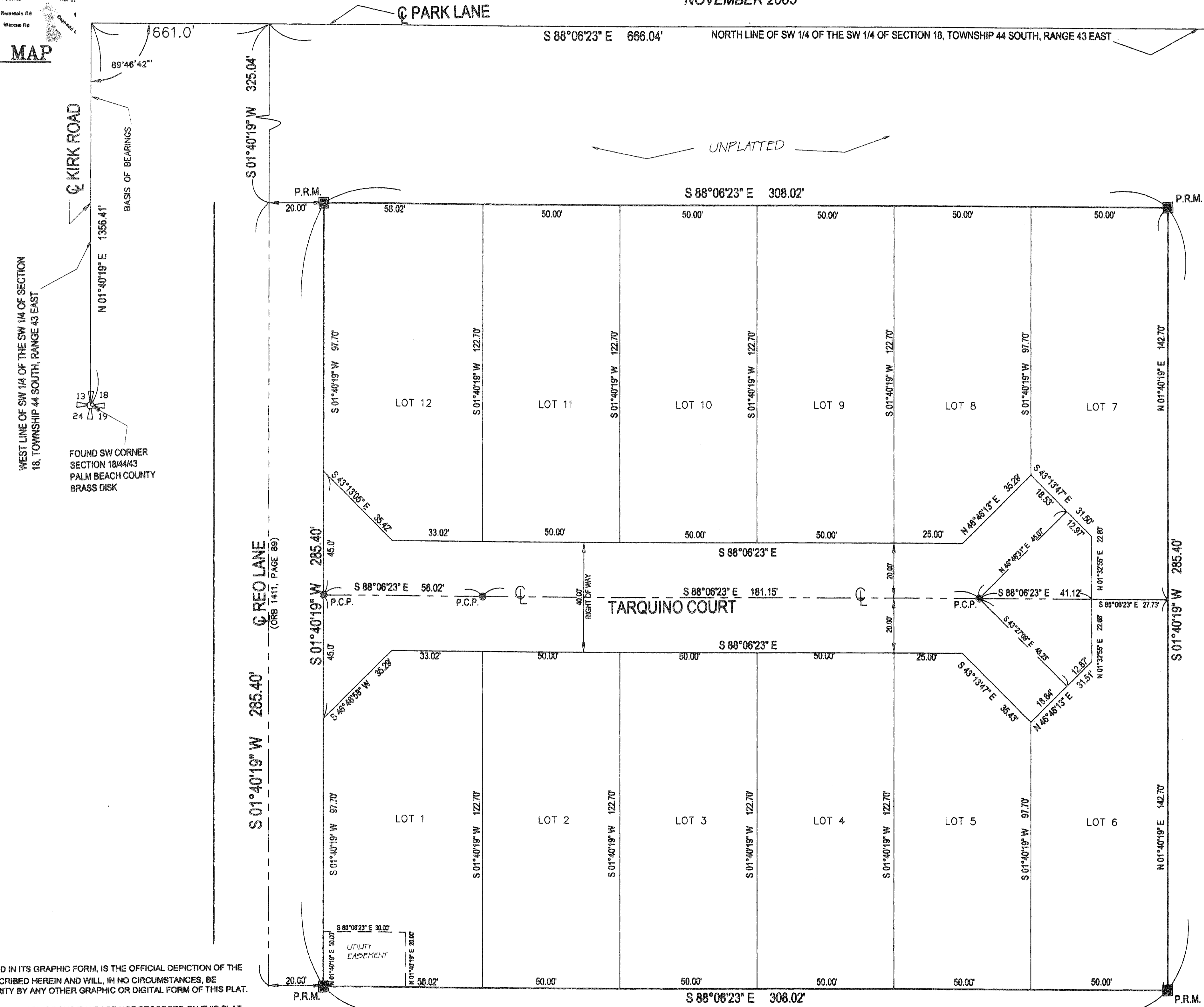
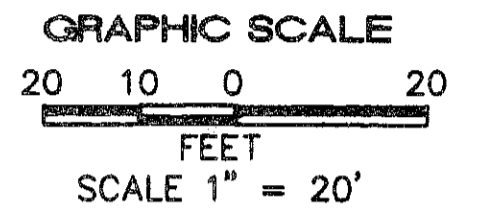
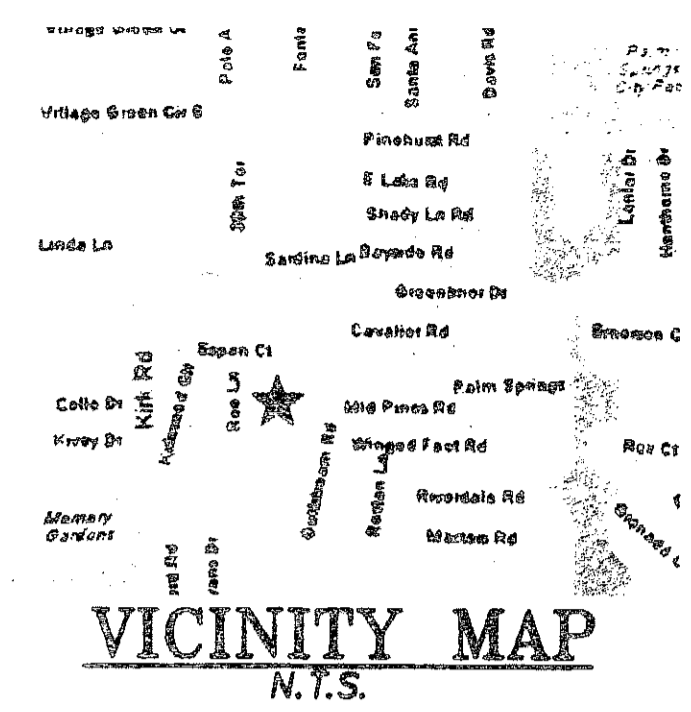
BEING A PORTION OF LAND LYING IN SECTION 18,
TOWNSHIP 44 SOUTH, RANGE 43 EAST
VILLAGE OF PALM SPRINGS
PALM BEACH COUNTY, FLORIDA
SHEET 2 OF 2
NOVEMBER 2005

18

COUNTY OF PALM BEACH
STATE OF FLORIDA

THIS PLAT WAS FILED FOR RECORD AT ___ M.
THIS ___ DAY OF ___
A.D. 2006 AND DULY RECORDED IN PLAT BOOK
ON PAGES ___ THRU ___

SHARON R. BOCK
CLERK AND COMPTROLLER
BY: _____ D.C.



WEST LINE OF SW 1/4 OF THE SW 1/4 OF SECTION 18, TOWNSHIP 44 SOUTH, RANGE 43 EAST

FOUND SW CORNER SECTION 18/44/43 PALM BEACH COUNTY BRASS DISK



NOTICE:

THIS PLAT, AS RECORDED IN ITS GRAPHIC FORM, IS THE OFFICIAL DEPICTION OF THE SUBDIVIDED LANDS DESCRIBED HEREIN AND WILL, IN NO CIRCUMSTANCES, BE SUPPLANTED IN AUTHORITY BY ANY OTHER GRAPHIC OR DIGITAL FORM OF THIS PLAT.
THERE MAY BE ADDITIONAL RESTRICTIONS THAT ARE NOT RECORDED ON THIS PLAT THAT MAY BE FOUND IN THE PUBLIC RECORDS OF THIS COUNTY.

Legend:

- A/C = AIR CONDITIONER
- BFP = BACK FLOW PREVENTOR
- BM = BENCH MARK
- CB = CATCH BASIN
- CL = CENTER LINE
- CM = CONCRETE MONUMENT
- DE = DRAINAGE EASEMENT
- DH = DRILL HOLE
- E = EAST
- EL = ELEVATION
- F = FOUND
- FH = FIRE HYDRANT
- FF = FINISH FLOOR
- ID = IDENTIFICATION
- IP = IRON PIPE
- IR = IRON ROD
- L = LENGTH OF CURVE
- MEAS = MEASURED
- N = NORTH
- OHPL = OVER HEAD POWER LINE
- PC = POINT OF CURVE
- PCP = PERMANENT CONTROL POINT
- PK = PARKER KAYLON
- POB = POINT OF BEGINNING
- POC = POINT OF COMMENCEMENT
- PSM = PROFESSIONAL SURVEYOR & MAPPER
- PP = POWER POLE
- R = RADIUS
- RM = REFERENCE MONUMENT
- S = SOUTH
- UE = UTILITY EASEMENT
- W = WEST
- WC = WITNESS CORNER
- WM = WATER METER
- Δ = CENTRAL ANGLE
- ID# = IDENTIFICATION
- + XX.XX = EXISTING ELEVATION
- ORB = OFFICIAL RECORD BOOK
- PG = PAGE
- GUY = GUY WIRE ANCHOR

THIS INSTRUMENT PREPARED BY:
JAY L. BISHOP
8901 CORPORATE WAY
SUITE #210
WEST PALM BEACH, FLORIDA 33407