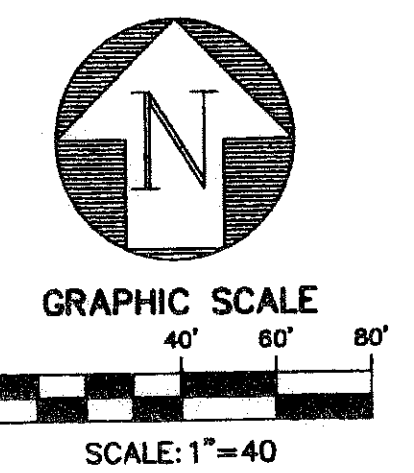
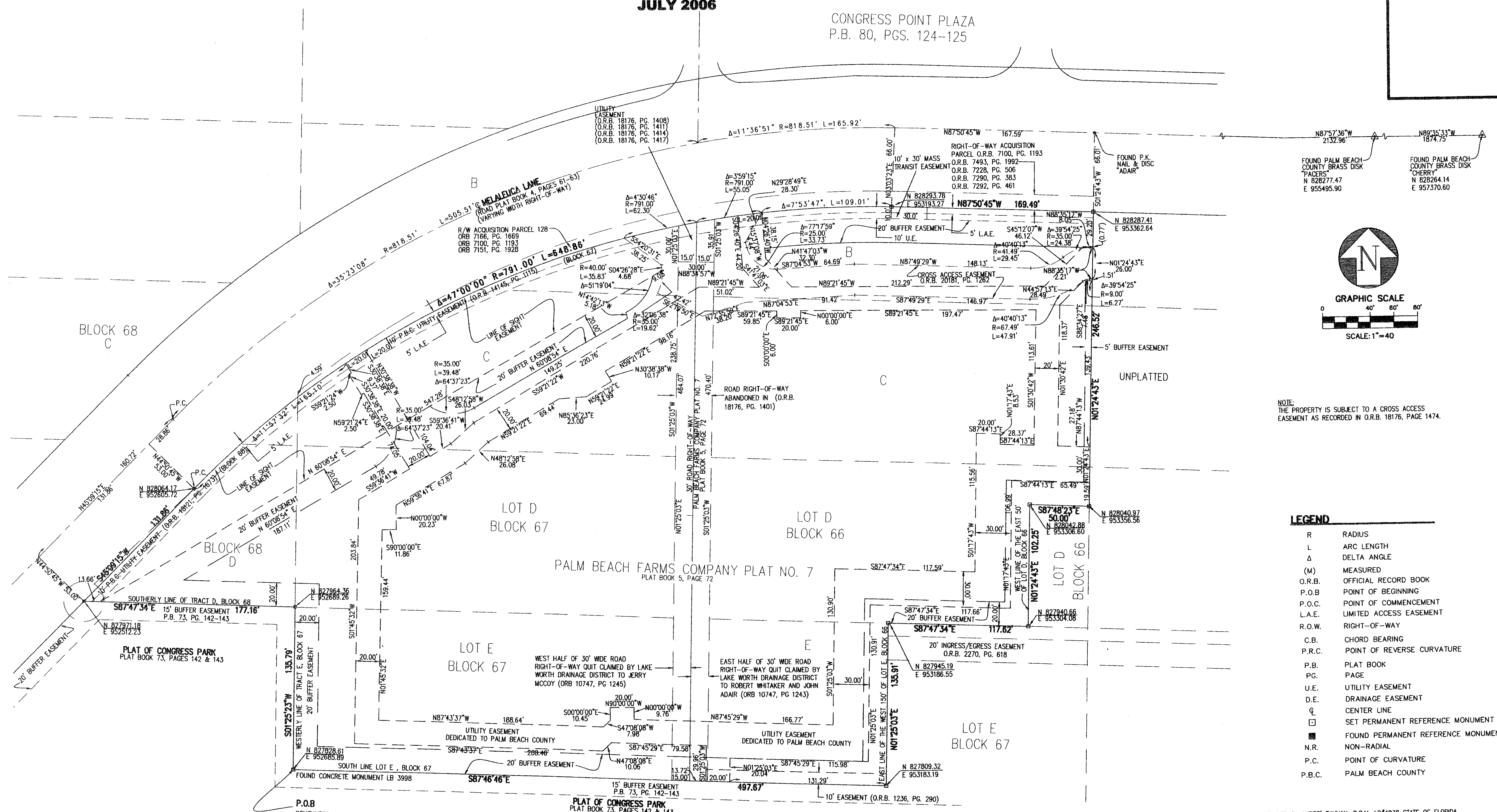


# SELECT PLAZA, M.U.P.D.

BEING A REPLAT OF A PORTION OF PALM BEACH FARMS COMPANY PLAT NO.7 AS RECORDED IN PLAT BOOK 5, PAGE 72, AND LYING IN SECTION 30, TOWNSHIP 44 SOUTH, RANGE 43 EAST, PALM BEACH COUNTY, FLORIDA

SHEET 2 OF 2  
JULY 2006

CONGRESS POINT PLAZA  
P.B. 80, PGS. 124-125



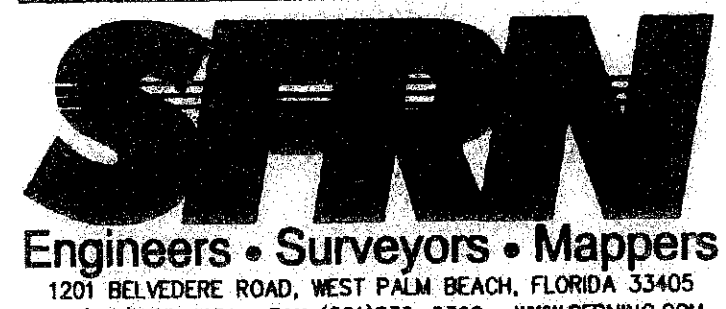
NOTE:  
THE PROPERTY IS SUBJECT TO A CROSS ACCESS  
EASEMENT AS RECORDED IN O.R.B. 18176, PAGE 1474.

**LEGEND**

R	RADIUS
L	ARC LENGTH
Δ	DELTA ANGLE
(M)	MEASURED
O.R.B.	OFFICIAL RECORD BOOK
P.O.B.	POINT OF BEGINNING
P.O.C.	POINT OF COMMENCEMENT
L.A.E.	LIMITED ACCESS EASEMENT
R.O.W.	RIGHT-OF-WAY
C.B.	CHORD BEARING
P.R.C.	POINT OF REVERSE CURVATURE
P.B.	PLAT BOOK
P.G.	PAGE
U.E.	UTILITY EASEMENT
D.E.	DRAINAGE EASEMENT
CL	CENTER LINE
□	SET PERMANENT REFERENCE MONUMENT LB#6603
■	FOUND PERMANENT REFERENCE MONUMENT
N.R.	NON-RADIAL
P.C.	POINT OF CURVATURE
P.B.C.	PALM BEACH COUNTY

THIS INSTRUMENT PREPARED BY ANDRE' RAYMAN, P.S.M. LS#4938 STATE OF FLORIDA.  
SFRN, INC. ENGINEERS SURVEYORS AND GIS MAPPERS  
1201 BELVEDERE ROAD, WEST PALM BEACH, FLORIDA 33405.  
CERTIFICATE OF AUTHORIZATION NO. LB0006603

## SELECT PLAZA, M.U.P.D.



DATE	04/10/2006
SCALE	1" = 40'
CAD FILE	5049_02.plt
SSK PROJECT	5049.01
DRAWN	SFRN STAFF
CHECKED	G. RAYMAN

S H E E T	2/2
JOB NO.	5049.02

SUBMITTER: SELECT PLAZA  
 DATE: 04/10/2006  
 DRAWN: SFRN STAFF  
 CHECKED: G. RAYMAN  
 PLOT: 300  
 PLOT: 300

Y:\land\Projects\_RQ\5049\_01\5049\_02.plt.dwg - 12/11/2006 - 2:24:11 PM EST